

REDLINE REVISION TO
42-CDM-2007-15
DRAFT PLAN OF
VACANT LAND CONDOMINIUM OF
BLOCKS 4 AND 7
REGISTERED PLAN 16M-37
AND PART LOT 26
CONCESSION 5
 (GEOGRAPHIC TOWNSHIP OF COLLINGWOOD)
TOWN OF THE BLUE MOUNTAINS
COUNTY OF GREY

SCALE 1:750

0 3 6 9 12 15 30 METRES
 ZUBEK, EMO, PATTEN & THOMSEN LTD.
 2008

METRIC
 DISTANCES ON THIS PLAN ARE IN METRES AND CAN
 BE CONVERTED TO FEET BY DIVIDING BY 0.3048

ADDITIONAL INFORMATION REQUIRED
 UNDER SECTION 5(17) OF THE
 PLANNING ACT.

- A. AS SHOWN
- B. AS SHOWN
- C. AS SHOWN
- D. 149 VACANT LAND RESIDENTIAL CONDOMINIUM UNITS
 & COMMON ELEMENT - UNITS 1-83, 143-149 TOWNHOUSE
 - UNITS 84-142 SINGLE FAMILY
- E. AS SHOWN
- F. AS SHOWN
- G. AS SHOWN (TOPOGRAPHIC INFORMATION PROVIDED BY UPPER
 CANADA CONSULTANTS)
- H. MUNICIPAL WATER SUPPLY
- I. SAND, SILT
- J. AS SHOWN (TOPOGRAPHIC INFORMATION PROVIDED BY UPPER
 CANADA CONSULTANTS)
- K. MUNICIPAL SANITARY SEWERS
- L. AS SHOWN

SITE INFORMATION:

TOTAL AREA OF PARCEL = 7.204ha.

SURVEYOR'S CERTIFICATE

I CERTIFY THAT:
 THE BOUNDARIES OF THE LANDS TO BE SUBDIVIDED AND
 THEIR RELATIONSHIP TO THE ADJACENT LANDS ARE
 ACCURATELY SHOWN ON THIS PLAN.

JANUARY 21, 2008 SEE ORIGINAL SUBMISSION O.L.S.
 PAUL R. THOMSEN
 ONTARIO LAND SURVEYOR
 COLLINGWOOD

OWNER'S CERTIFICATE

THE NEIGHBOURHOODS AT DELPHI POINT INC. HEREBY
 AUTHORIZES THE SUBMISSION OF THIS DRAFT PLAN OF VACANT
 LAND CONDOMINIUM TO THE GREY COUNTY
 PLANNING DEPARTMENT
 JANUARY 21, 2008

PER SEE ORIGINAL SUBMISSION
 RICHARD HODGE
 AUTHORIZED SIGNING OFFICER
 THE NEIGHBOURHOODS AT DELPHI POINT INC.
 I HAVE THE AUTHORITY TO BIND THIS CORPORATION

OWNER'S CERTIFICATE

CENTENNIAL CONSTRUCTION AND CONTRACTING (NIAGARA) INC.
 HEREBY AUTHORIZES THE SUBMISSION OF THIS DRAFT PLAN OF
 VACANT LAND CONDOMINIUM TO THE GREY COUNTY PLANNING
 DEPARTMENT

JUNE , 2018

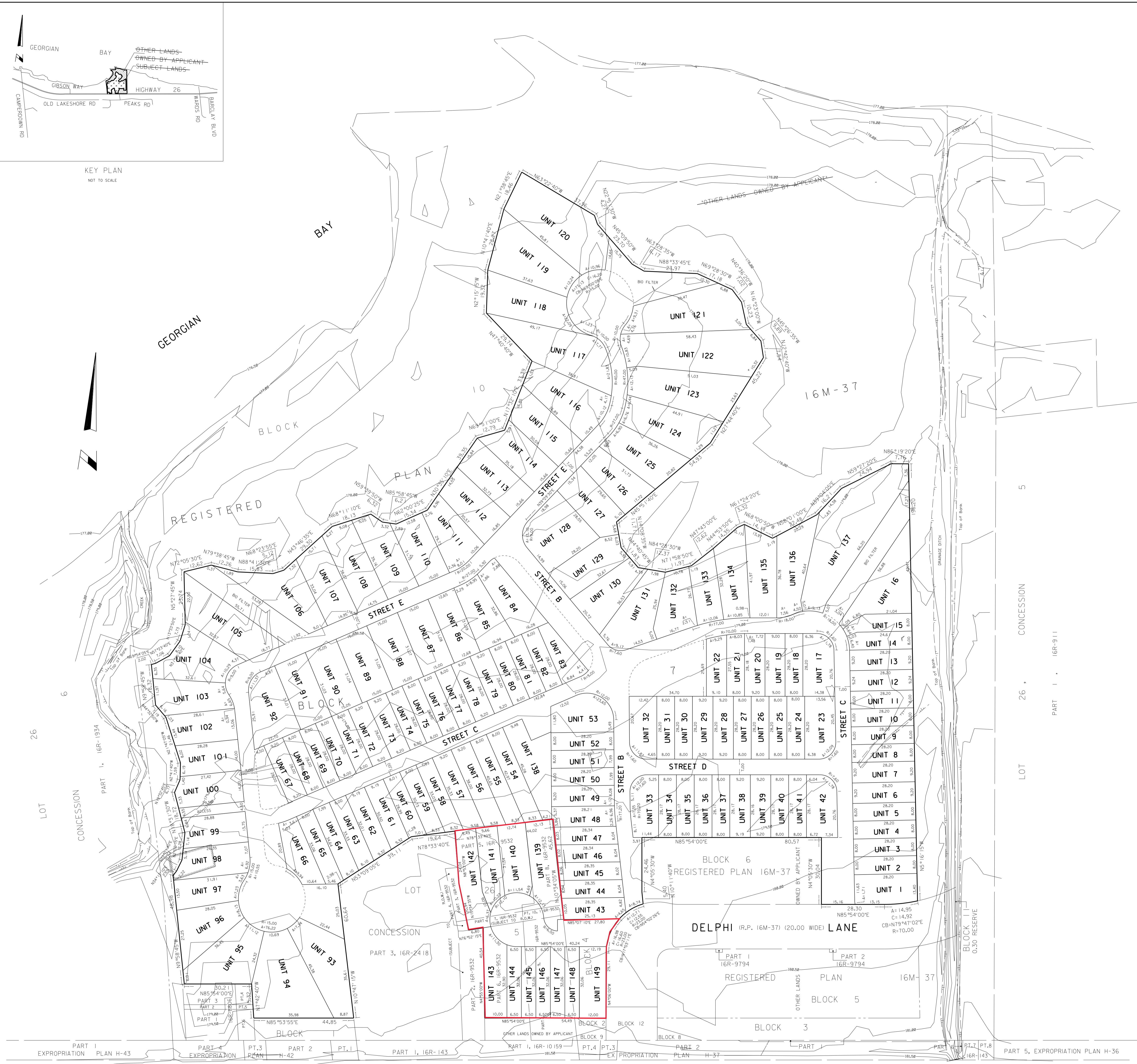
PER DOMENIC DILLALA
 AUTHORIZED SIGNING OFFICER
 CENTENNIAL CONSTRUCTION AND CONTRACTING (NIAGARA) INC.
 I HAVE THE AUTHORITY TO BIND THIS CORPORATION

LAND USE SCHEDULE				
LAND USE	UNITS	NO OF UNITS	AREA (HA)	AREA (SQ)
TOWNHOUSE	1-83	83	2,229	33
SINGLE DETACHED	84-138	55	3,177	47
COMMON ELEMENT (ROAD, ACCESS, FUTURE DEVELOP, BIOPLOTS, PARKING, SNOW REMOVAL)			1,309	20
TOTAL		6,715	100	

LAND USE SCHEDULE				
LAND USE	UNITS	NO OF UNITS	AREA (HA)	AREA (SQ)
SINGLE FAMILY	1,2	2	948	2,564
SEMI	3,4	2	780	17,81
TOWNHOUSE	5,6,7,8 9,10,11	7	1812	41,37
ROADWAY		840	15,18	
TOTAL		11	4380	100

ZUBEK, EMO
PATTEN & THOMSEN
 LIMITED
 ONTARIO LAND SURVEYORS
 200 MOUNTAIN ROAD
 UNIT 4
 COLLINGWOOD, ONTARIO L9Y 4V5
 PHONE: (705) 445-4910

JOB No. 76-118-14 SURVEY FOR: CENTENNIAL
 DON FILE: CADDON, 2018-05, DELPHI-REDLINE.DGN



THE KING'S HIGHWAY No. 26 (DEPOSITED PLAN 323)

PART I, EXPROPRIATION PLAN H-43 PART 1, 16R-143 PART 2, PT.3 H-42 PART 1, 16R-143 PART 1, 16R-10159 PART 1, 16R-9794 PART 2, 16R-9794 PART 1, 16R-143 PART 5, EXPROPRIATION PLAN H-36