



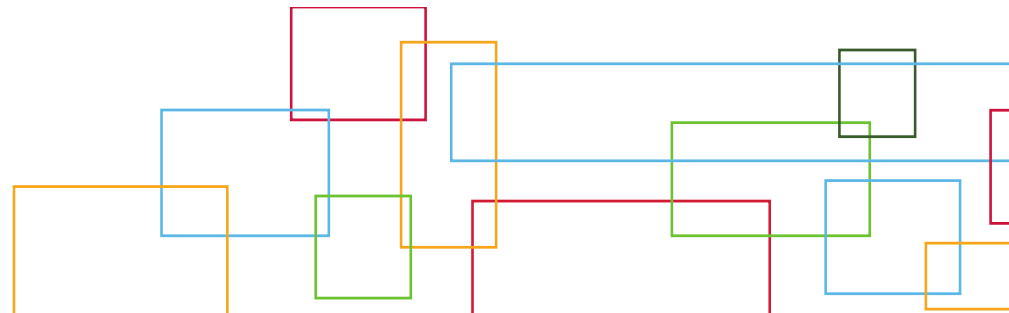
Age-friendly Peterborough

Presentation to:

Planning & Health Awareness for Age-friendly Communities

OPPI District Event

Friday, June 1, 2018



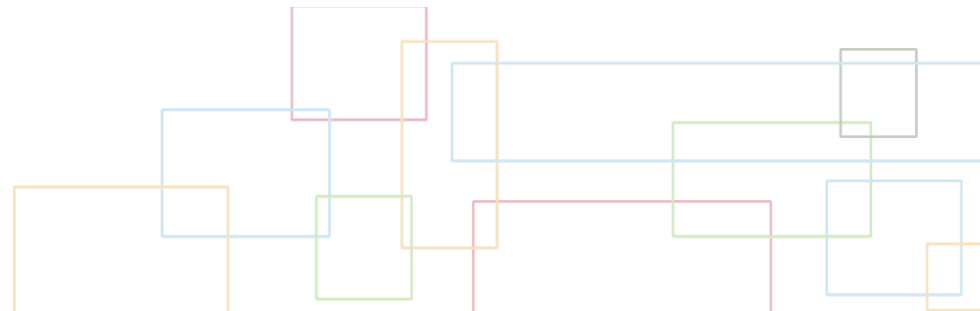
Presentation Overview

1. Background on Peterborough

2. Approach to Age-friendly Planning in Peterborough

3. Age-friendly Peterborough Action Plan

4. Implementation of the Plan



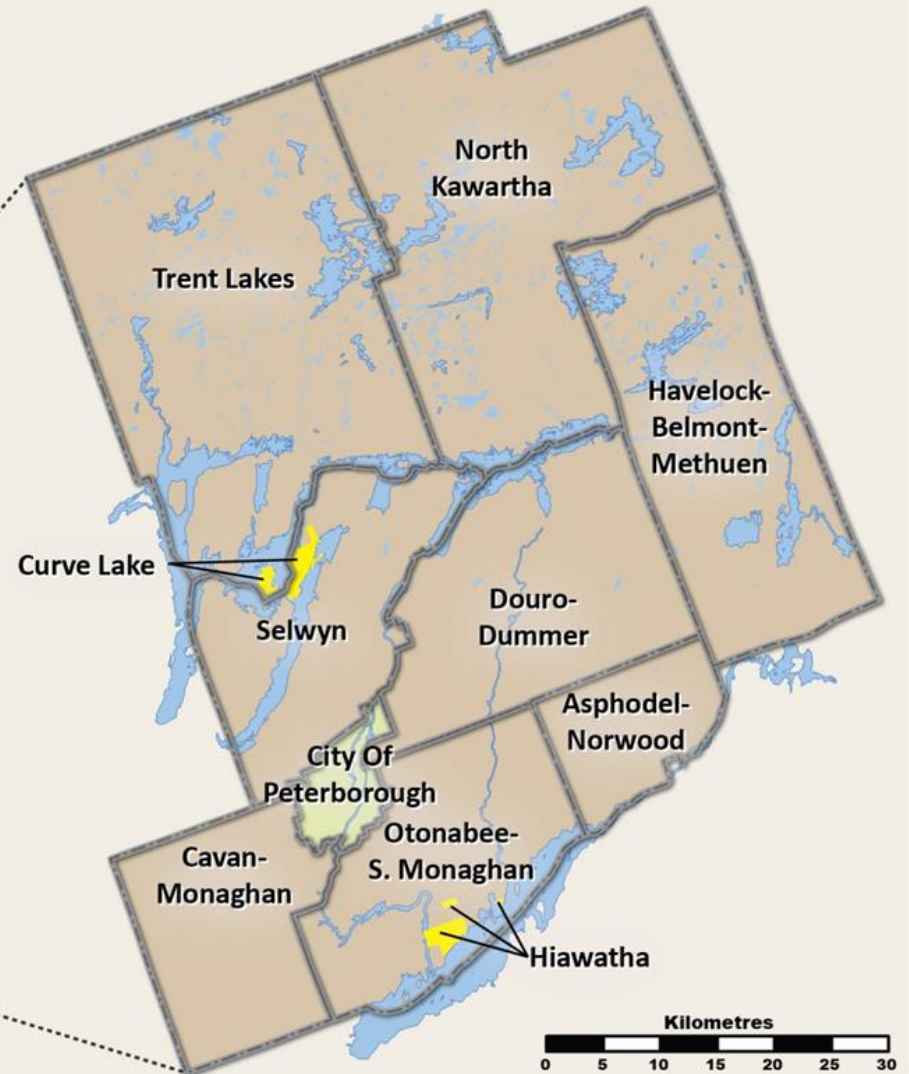
Peterborough Region

County of Peterborough Townships,
City of Peterborough, and First Nations

LEGEND

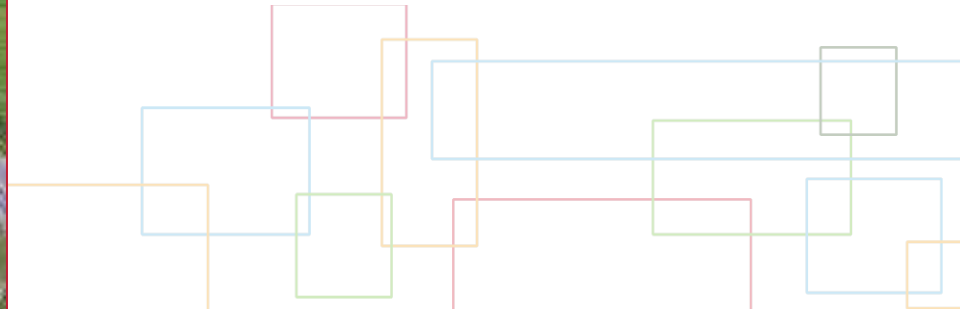
- County of Peterborough
- City of Peterborough
- First Nations

Ontario, Canada



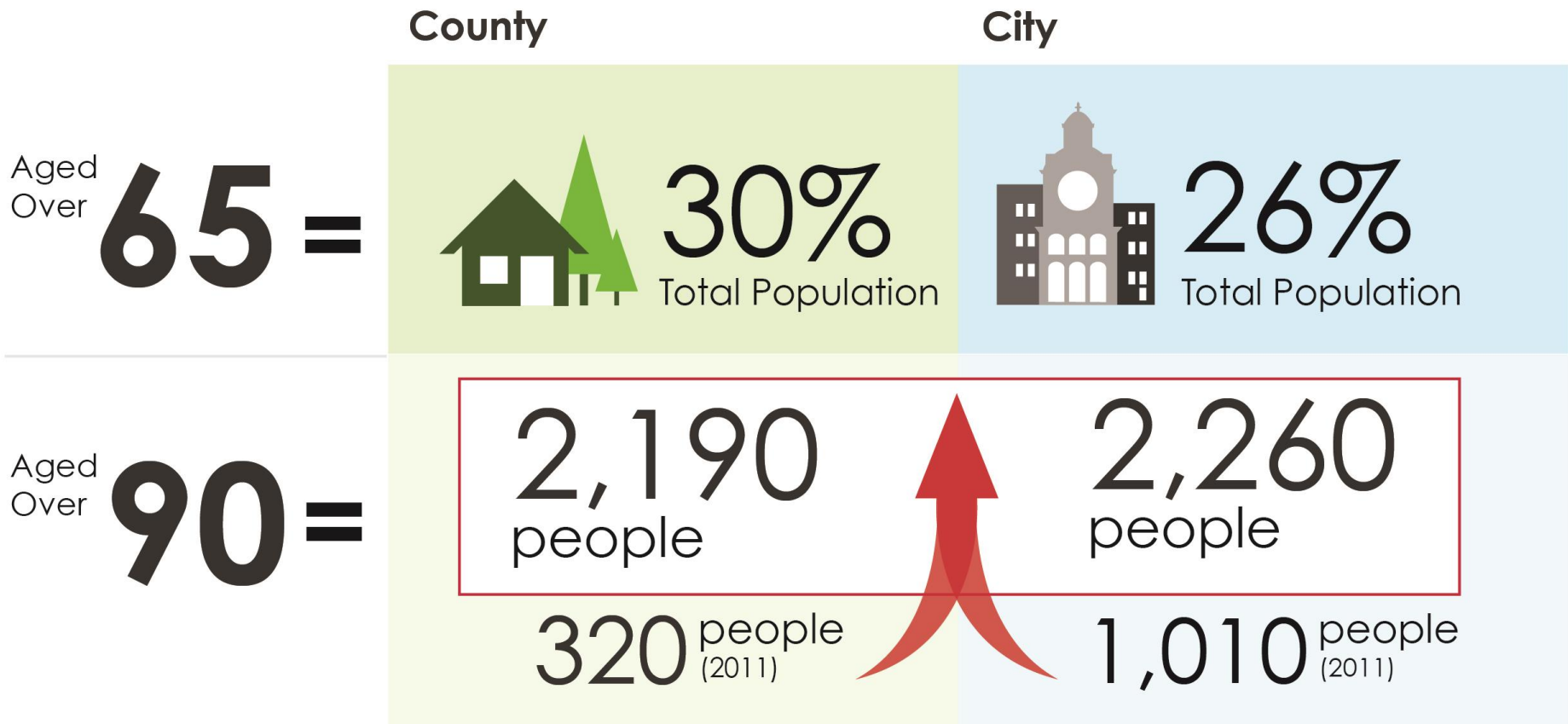
Local Population

- City: 81,100
- County: 55,800
- 22.3% over age of 65 years
- 4.0% over age of 85 years
- 14.5% under age of 14 years



Local Population Shift

By 2041



2009 CARP Pole

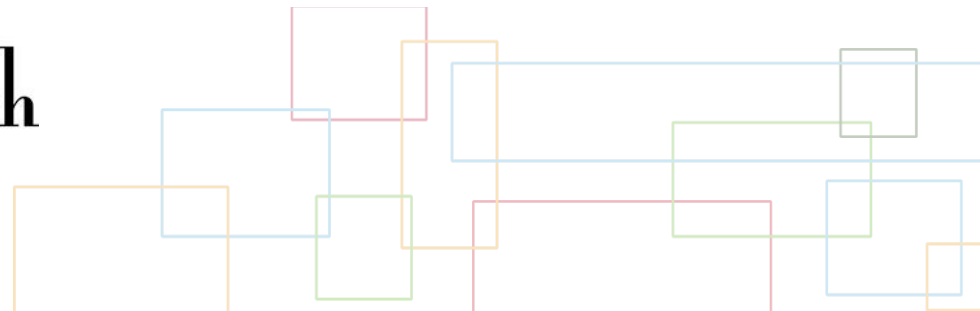
	Overall	Transit	Housing	Pedestrian	Health	Index
Peterborough	77%	64%	30%	53%	64%	288
Winnipeg	62%	54%	-16%	23%	62%	185
Montreal	60%	34%	34%	20%	34%	182
Victoria	90%	68%	-72%	52%	40%	178
London	68%	28%	-22%	20%	42%	136
Vancouver	80%	60%	-88%	45%	18%	115
KW	62%	21%	-40%	26%	34%	103
All Cities	58%	35%	-58%	20%	24%	75

What is happening in Peterborough?

- Health Services
- Recreation\Trails\Leisure
- Housing
- Transportation
- Local Service Organizations



City of
Peterborough



Health Services



Recreation \ Leisure \ Trails

- 3 Activity Centre devoted to seniors
- 3 Fitness Centre with programs for seniors
- Expanding Trail and Active Transportation Network



Transit

- All lowering buses
- Handi-Van service
- Community Bus (new)
- Successful Community Transportation Grant

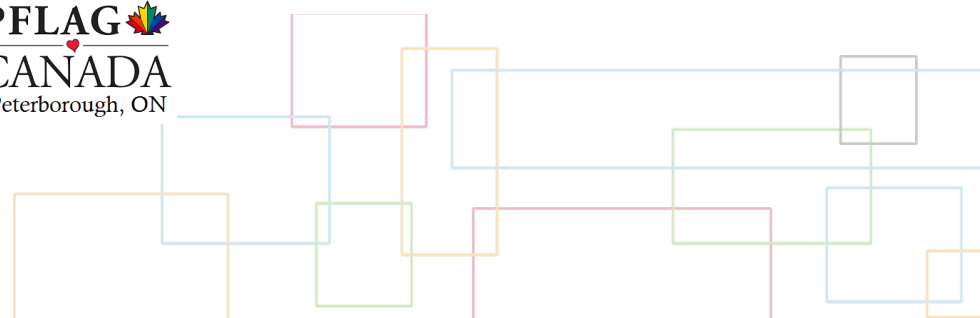


Housing



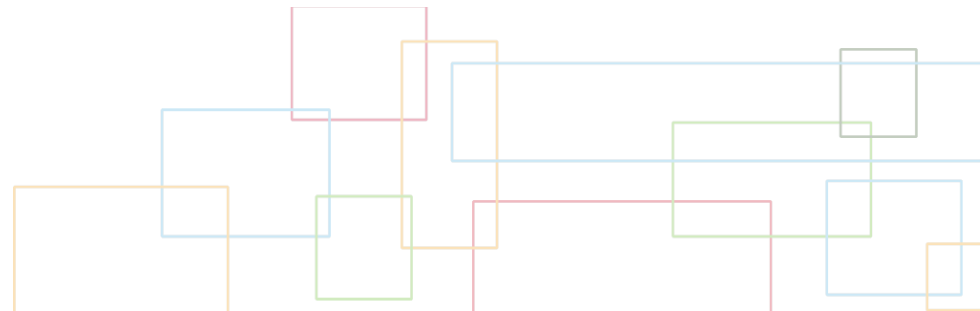
Local Service Organizations

- Culture of cooperation and collaboration.



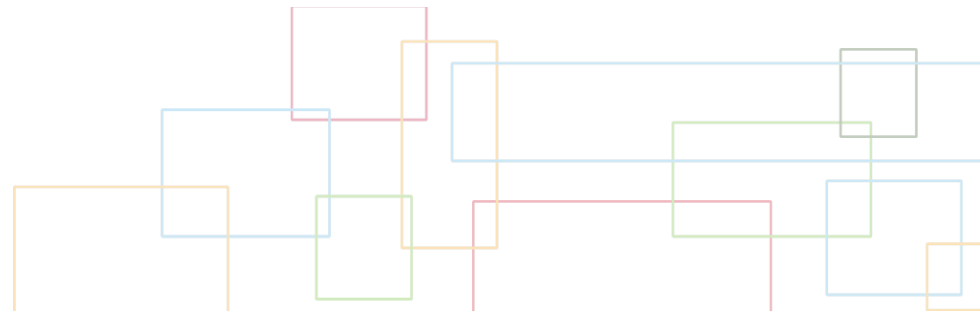
Age-friendly Project Approach

- WHO Framework
- Community Approach
- Corporate Support
- Sufficient Funding
- Organizational Framework
- Staff Capacity and Support



Age-friendly Communities

Age-friendly communities recognize older adults as an asset, and provide programs and services that enable everyone, from the very young to the very old, to enjoy a good quality of life.



Age-friendly Domains



**Community
Support and
Health Services**



Housing



Transportation



**Outdoor Spaces
and Buildings**



**Respect and
Social Inclusion**



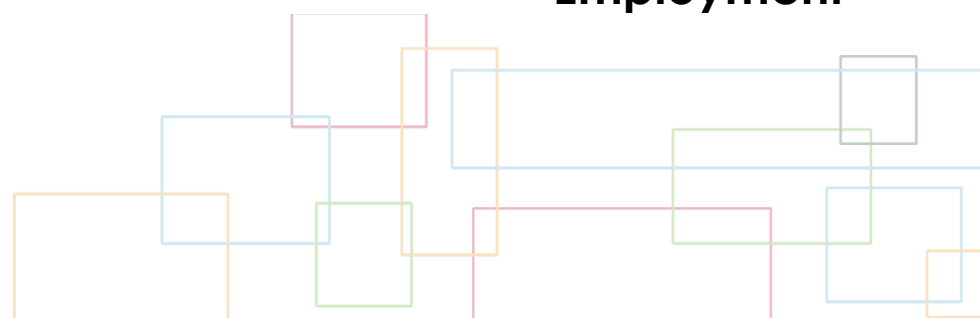
**Social
Participation**



**Communication
and Information**

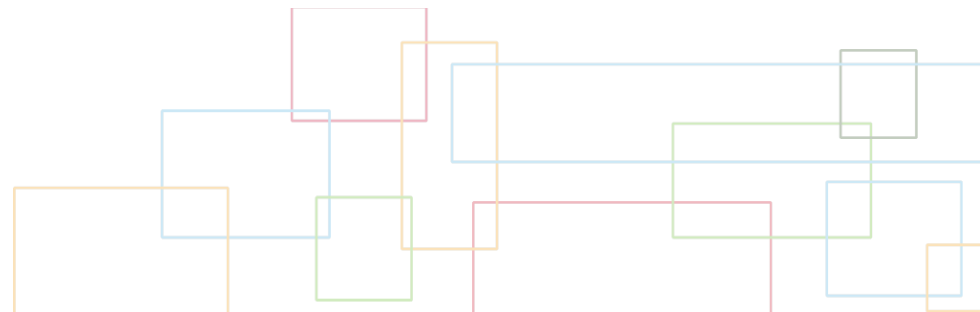


**Civic
Participation and
Employment**



Community Approach

- Not “owned” by government
- Strong partnerships with stakeholders
- PCOA Membership
 - 45 Contacts
 - 28 Organizations



Corporate Support



City of
Peterborough



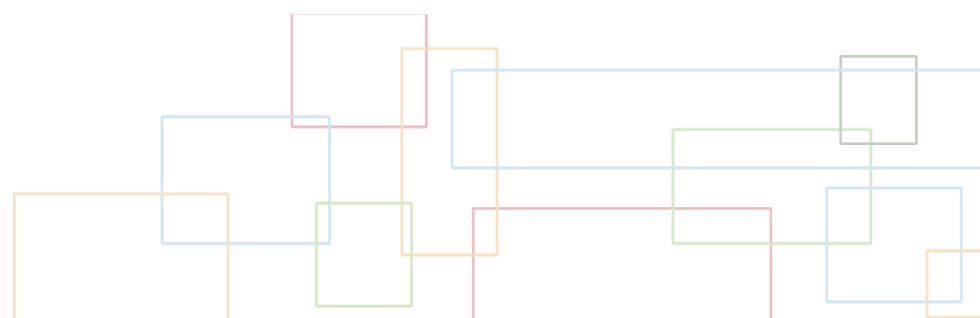
Sufficient Funding



City of
Peterborough

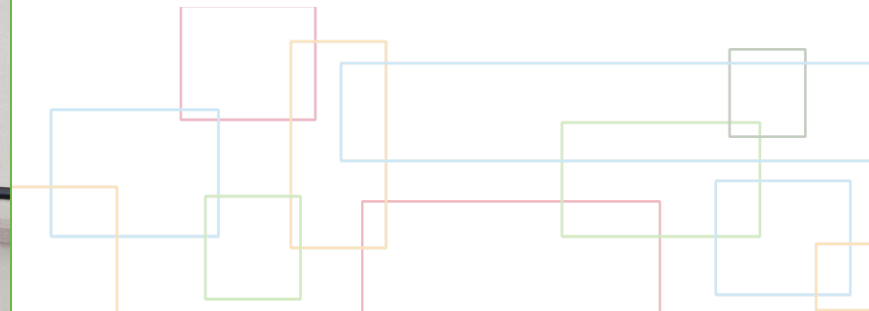


An agency of the Government of Ontario
Un organisme du gouvernement de l'Ontario



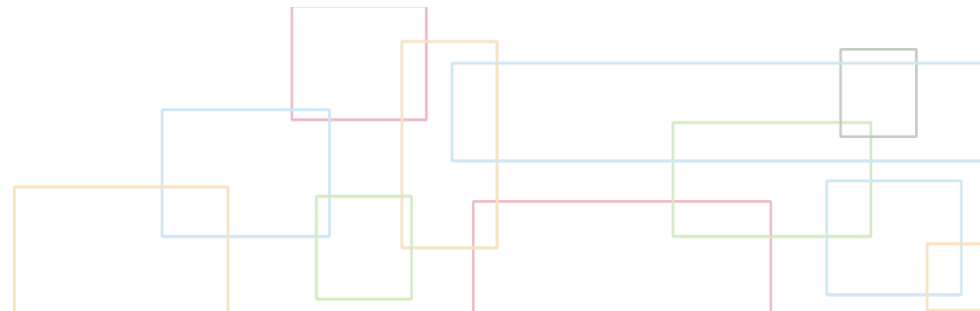
Organizational Framework

- Age-friendly Peterborough Committee
 - Formed as a subcommittee of the PCAO for the purpose of creating an age-friendly plan.



Staff Capacity and Support

- Full-time Age-friendly Coordinator on a 3-year contract.
- Community Development Program Manager.
- Administrative support through Social Services Division.
- Awareness among other corporate divisions in all municipalities.



Age-friendly Plan



Consultation Process



1,127

Survey Responses



269

Focus Group
Participants



Older Adults



Informal Caregivers



Service Providers



40.5%
from
The County
of Peterborough



51.6%
from
The City
of Peterborough

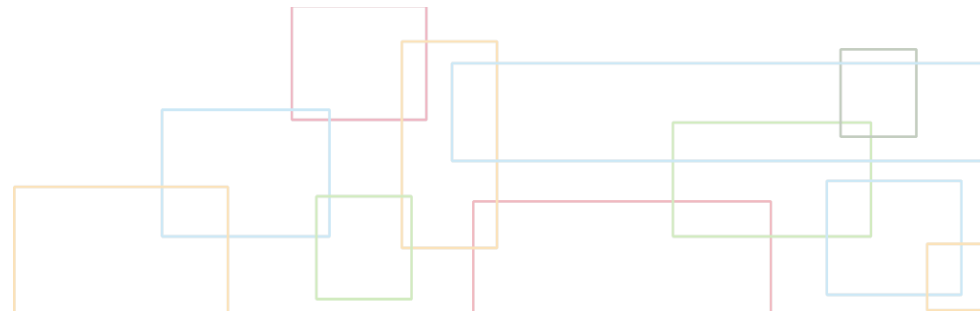
Vision and Objective

Vision

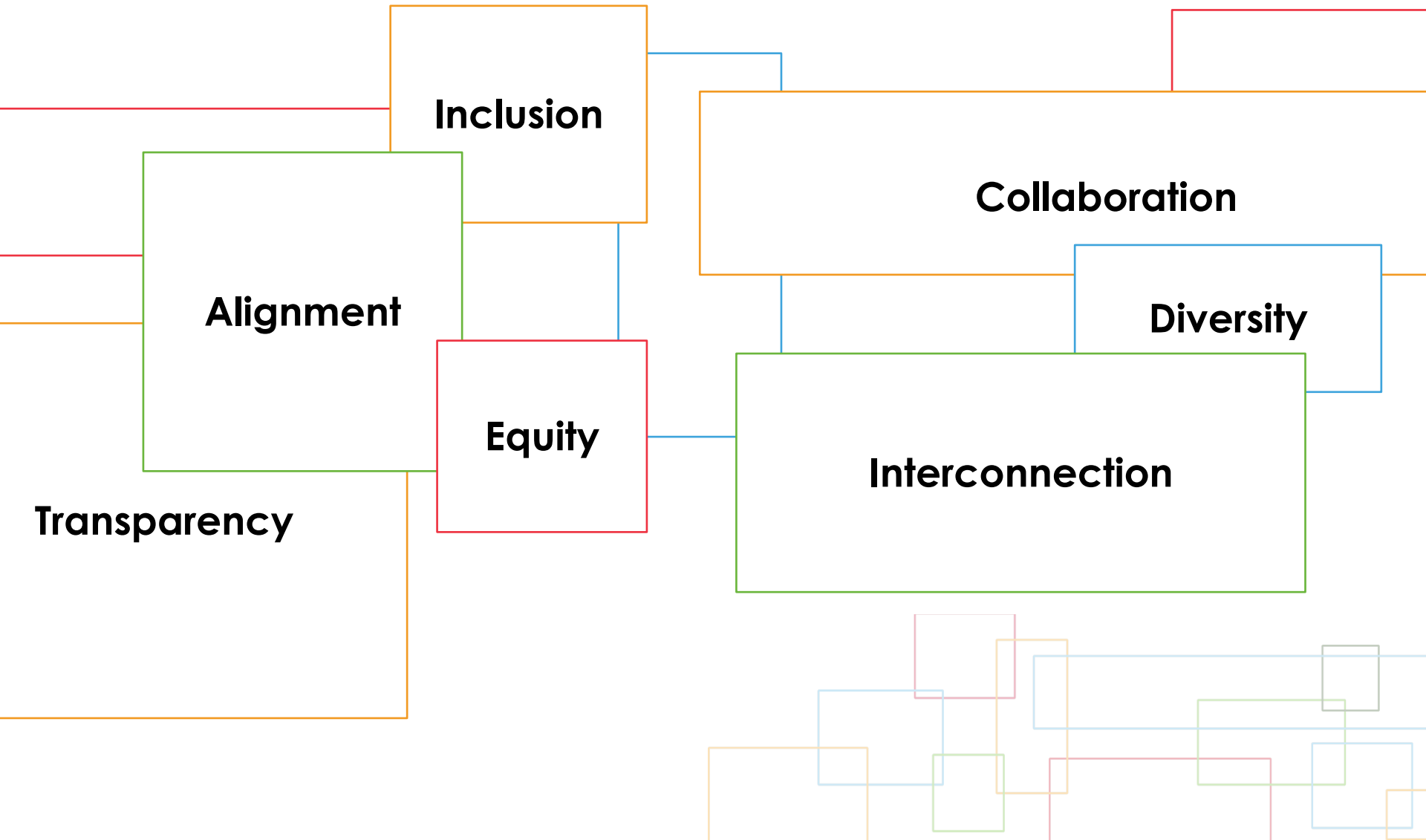
Peterborough is a thriving region that is inclusive, respectful and accessible to people of all ages and abilities.

Objective

The Age-friendly Peterborough Plan will support healthy and active aging; promote intergenerational connections; foster an appreciation of the aging process; and enhance physical, social, and health-related infrastructure.



Values



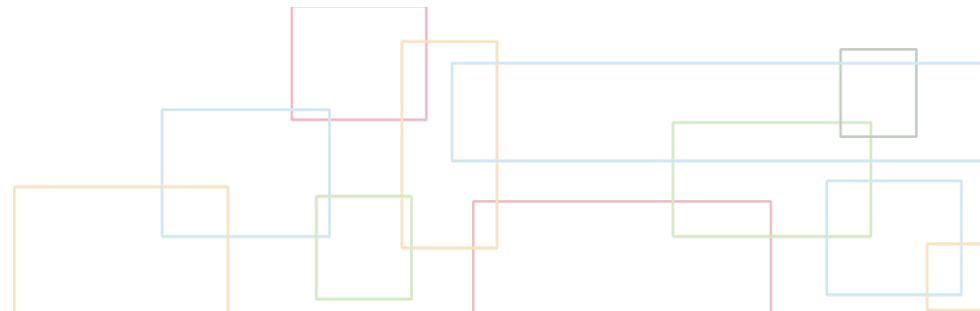
Goals

1. Older adults' basic needs are met.

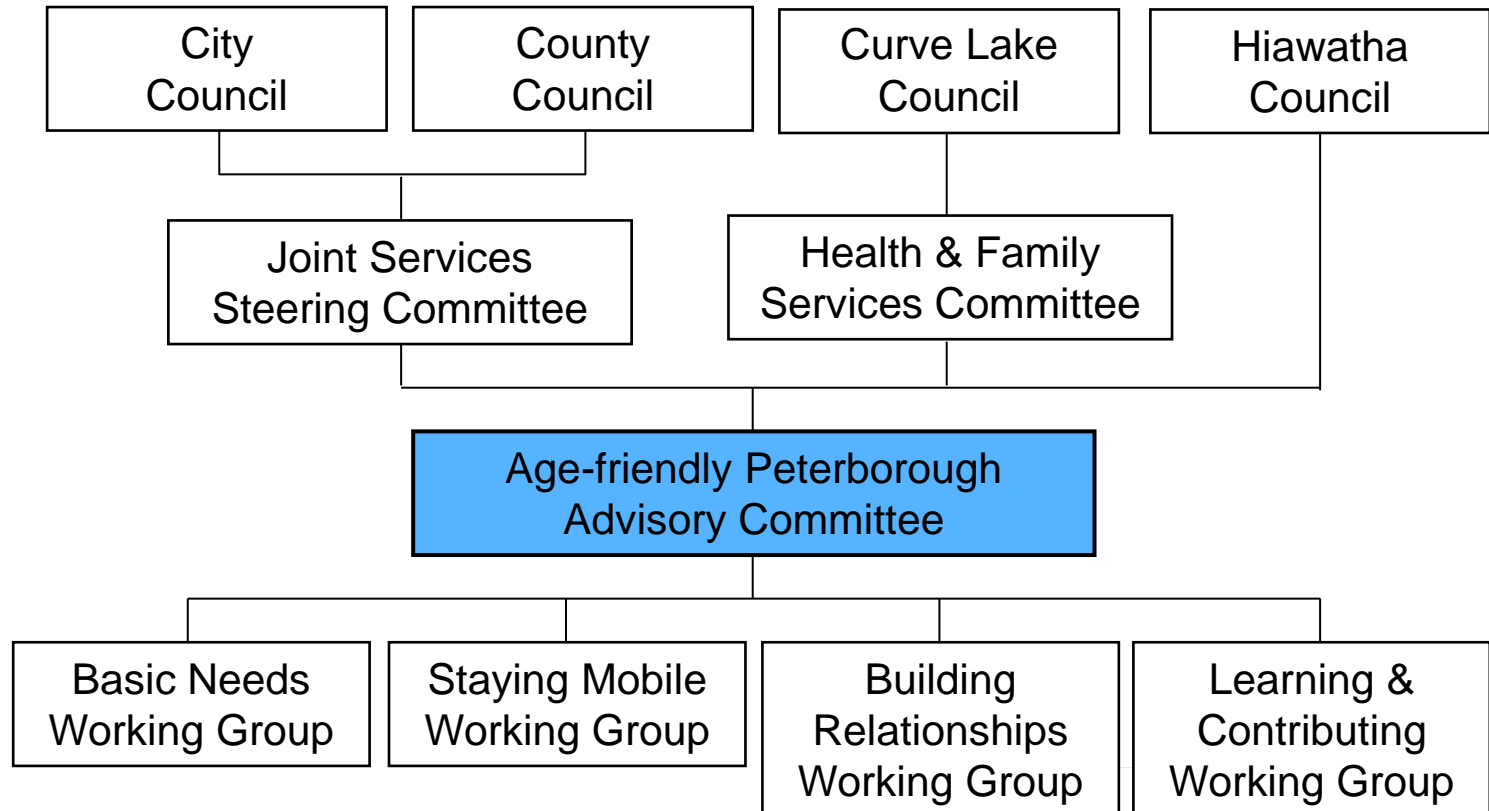
2. Older adults are able to get around the community.

3. Older adults are supported to build and maintain relationships.

4. Older adults have the opportunity to learn, grow, and contribute.

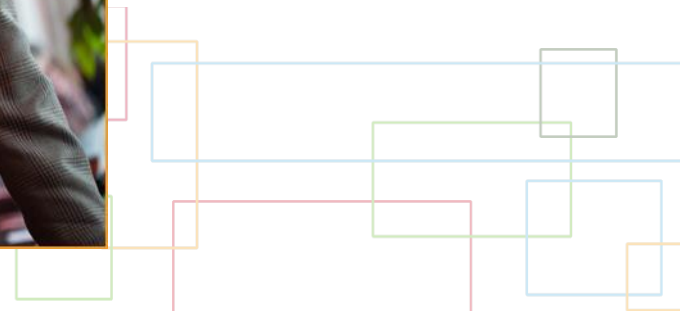


Age-friendly Peterborough



Basic Needs

- Housing & Health Needs Study
 - **Housing Options**
 - **Health services to age-in-place**
 - **Analysis of the aging population**
 - **Preparing for housing needs and opportunities**



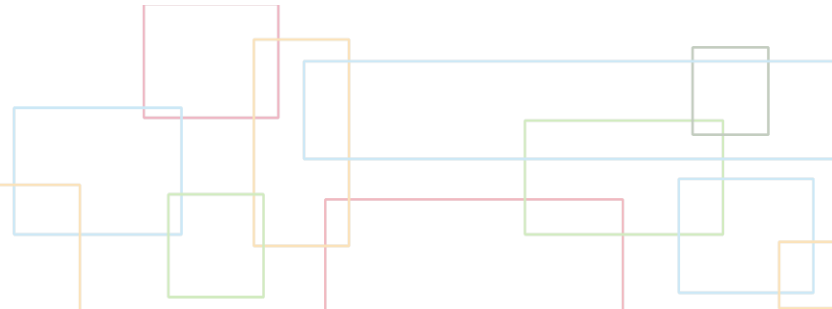
Staying Mobile

- Rural transportation project
 - \$1.5 over 5 years
 - Feasibility Study in year 3
- Walkability Assessments



Building Relationships

- Age-friendly Business Program
- Elder Abuse Strategy
 - It's Not Right Program
- Pride & Positivity Project



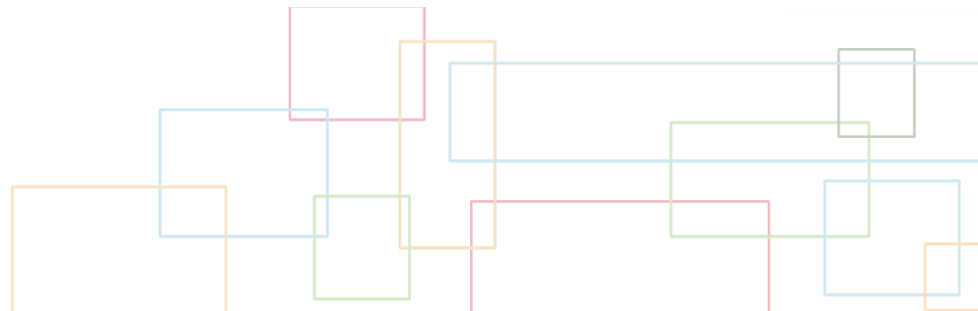
Learn, Grow & Contribute

- Recreation and Leisure Study
- Age-friendly Report (TV Show)
- Seniors Showcase
- Summit on Aging



 **Summit**
age-friendly
peterborough on **Aging**

Dementia Dialogues





6th Annual

SENIORS SHOWCASE

Show Sponsor



Wednesday, June 20, 2018
9:30am to 4:30pm

Peterborough Sport
& Wellness Centre
775 Brealey Drive

- Free workshops (10-4)
Healthy Living &
Planning Ahead themes
- Free Public Admission
- Free Refreshments
- Free Parking
- 100+ Exhibitors



Win a \$500 travel
voucher from
Merit Travel

merit travel

Agency Village Sponsor



Media Sponsors



Workshop Sponsors



Presented By



For more information: peterboroughchamber.ca or 705-748-9771 x0



Dementia Dialogues Living Life Fully

Join us for Dementia Dialogues featuring panelists and speakers in the areas of primary care and diagnosis, legal issues, community and lived experiences.

Key Note Speaker:



Dr. Peter Lin is Director of Primary Care Initiatives at the Canadian Heart Research Centre and health columnist for CBC Radio. In addition to sitting on the editorial board for the Canadian Alzheimer Disease Review, Dr. Lin was chair of the US Dementia Congress.

Special Guest:



Karin Wells is an internationally recognized CBC radio documentary maker. She recently received a United Nations media award for her documentary on Dementia in Denmark.

I'm Still Here!

Live performance on living with dementia and the everyday realities.



Visit Us
www.peterborough.ca/aging
for updates about the
Summit on Aging

Save
the Dates

Thursday
OCTOBER
25
2018

Trent University,
Gzowski College



www.peterborough.ca/aging

Opening night fundraising event
in support of Alzheimer Society

- Spirit Unforgettable Film Screening
spiritunforgettable.com
- Live Music by Kilt Trip

Wednesday
OCTOBER
24
Market Hall





Chris Kawalec

Community Development Program Manager

[p] 705-748-8830 ext. 3834

[e] ckawalec@peterborough.ca

[w] [peterborough.ca\aging](http://peterborough.ca/aging)

Thank You.

