

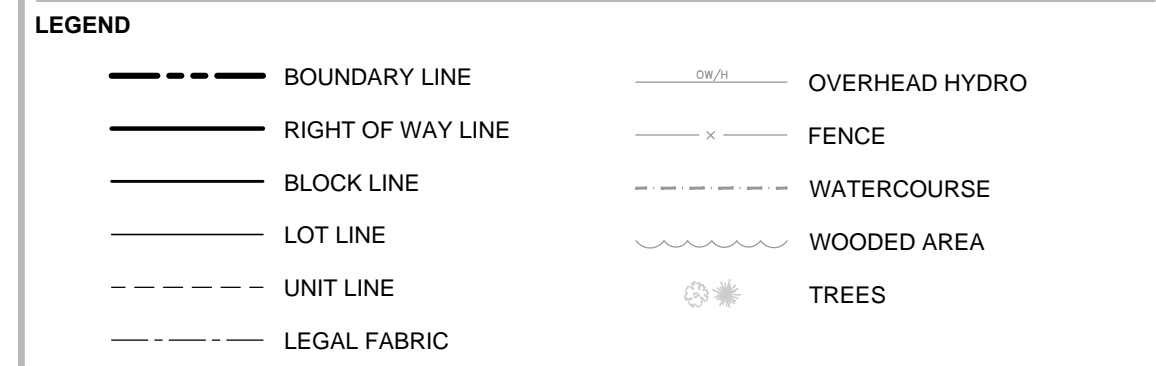
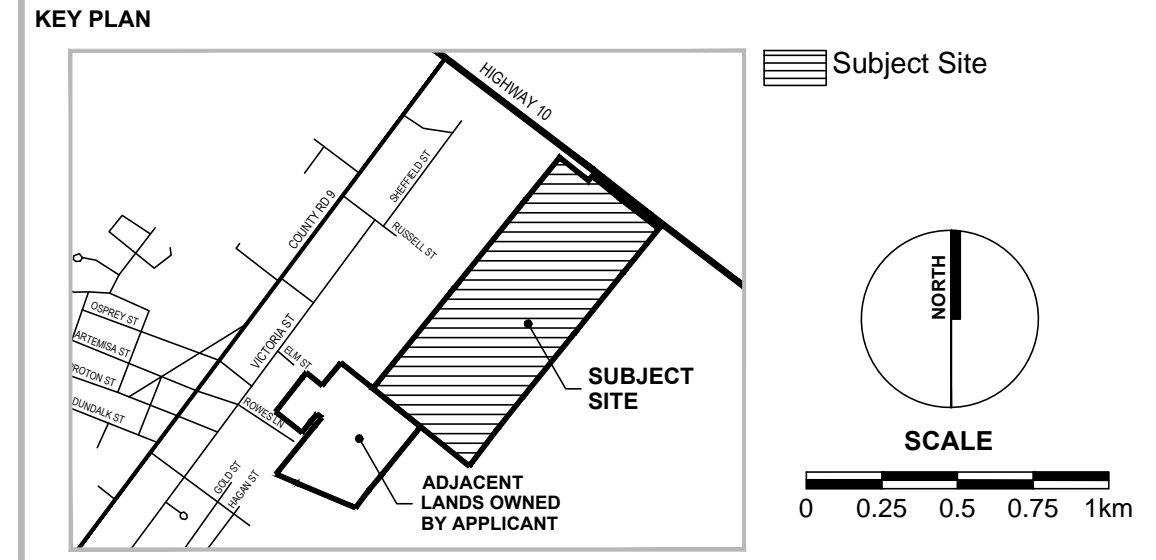
LEGAL DESCRIPTION
 PART OF LOTS 233 AND 234
 CONCESSION 1, SOUTHWEST OF THE TORONTO AND SYDENHAM ROAD
 GEOGRAPHIC TOWNSHIP OF PROTON
 TOWNSHIP OF SOUTHGATE
 COUNTY OF GREY

OWNER'S CERTIFICATE
 I HEREBY AUTHORIZE MACNAUGHTON HERMSEN BRITTON CLARKSON PLANNING LIMITED TO SUBMIT THIS PLAN FOR APPROVAL.

DATE: DECEMBER 4, 2015
 SHAKIR REHMATULLAH - PRESIDENT
 FLATO DUNDALK MEADOWS INC.

SURVEYOR'S CERTIFICATE
 I HEREBY CERTIFY THAT THE BOUNDARIES OF THE LAND TO BE SUBDIVIDED ON THIS PLAN AND THEIR RELATIONSHIP TO THE ADJACENT LANDS ARE ACCURATELY AND CORRECTLY SHOWN.

DATE: DECEMBER 9, 2015
 DAN DZALDOVICH, S., O.L.I.P.
 SCHAEFFER DZALDOVICH BENNETT LTD.
 416-987-0101



REVISION No.	DATE	ISSUED / REVISION	BY
ADDITIO INFORMATION REQUIRED UNDER SECTION 51(17) OF THE PLANNING ACT R.S.O. 1990 C.P.13 AS AMENDED			
A. AS SHOWN	F. AS SHOWN	K. MUNICIPAL WATER AND SANITARY SERVICES, ALL MUNICIPAL SERVICES AS REQUIRED.	
B. AS SHOWN	G. AS SHOWN	L. AS SHOWN	
C. AS SHOWN	H. MUNICIPAL WATER SUPPLY		
D. RESIDENTIAL	I. SILT LOAM		
E. AS SHOWN	J. AS SHOWN		

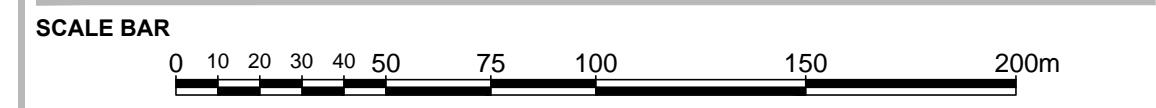
PLANNING URBAN DESIGN & LANDSCAPE ARCHITECTURE
MHC PLANING
 113 COLLIER STREET
 BARRIE, ON, L4M 1H2
 P: 705 728 0045 F: 705 728 2010
 WWW.MHCPPLAN.COM

STAMP	DATE	DEC. 4, 2015
FILE No.	15184B	
SCALE	1:1,800 (ARCH D)	
DRAWN BY	M.M.	
CHECKED BY	K.M.	
OTHER		

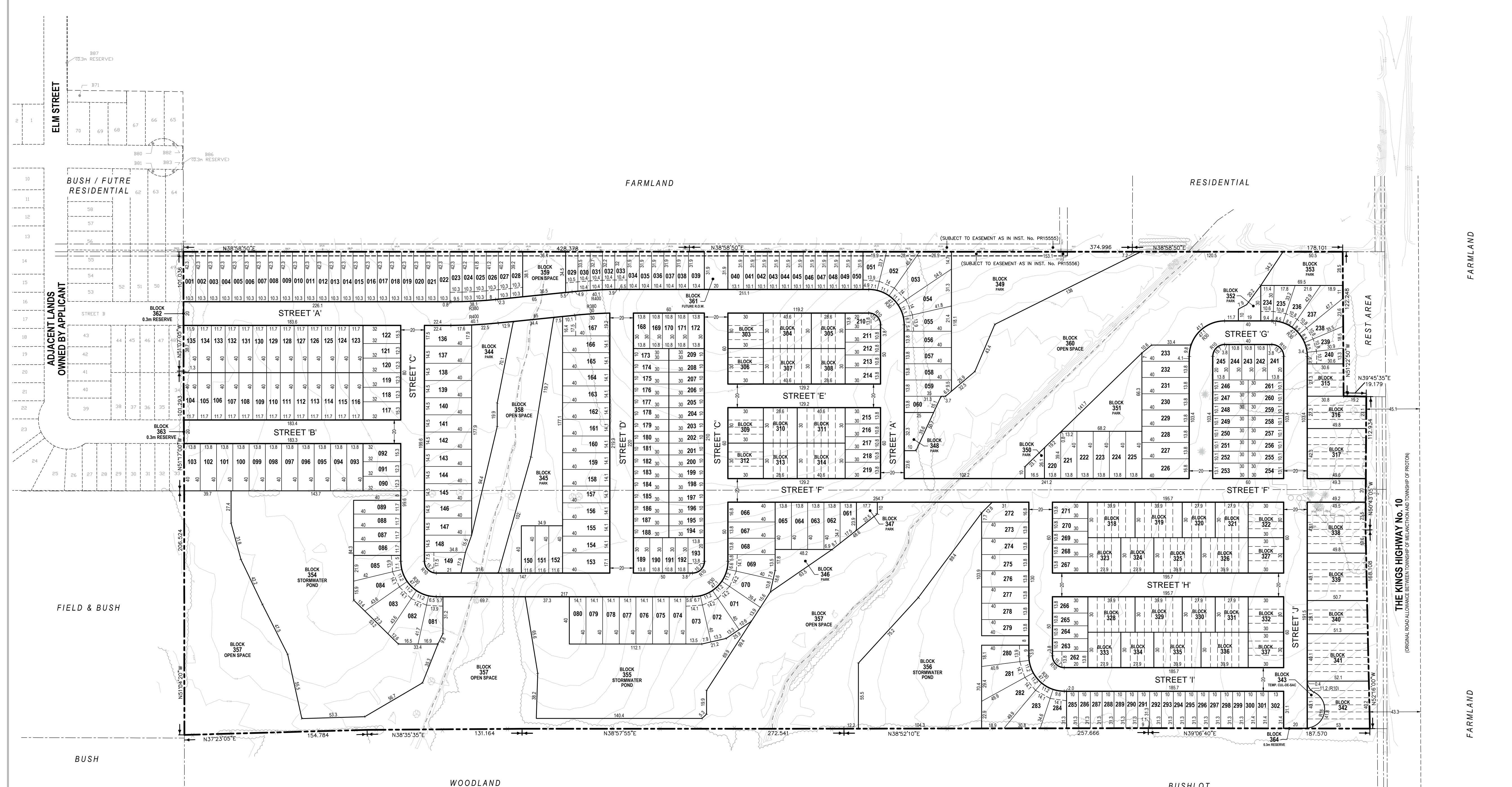
PROJECT
FLATO EAST
 FLATO GROUP INC.
 3621 HIGHWAY 7 EAST, SUITE 503
 MARKHAM, ON L3R 0G6
 P:(905) 479-9292 F:(905) 429-9165
 WWW.FLATOGROUP.COM

FILE NAME
DRAFT PLAN OF SUBDIVISION

DWG No.
1 of 1



N:\Southgate\Flato Dundalk - New Residential Development - Dundalk - 15184B\Drawings\Draft Plan\CAD\15184B_DraftPlan_2015-12-09.dwg



LAND USE SUMMARY

LAND USE	LOTS / BLOCKS	UNITS	AREA
SINGLE DETACHED - 10.0m LOTS	001-050, 168-219, 234-271, 285-302	158	5.57 ha
SINGLE DETACHED - 11.6m LOTS	086-092, 104-135, 150-152	42	1.92 ha
SINGLE DETACHED - 13.7m LOTS	051-085, 093-103, 136-149, 153-167, 220-233, 272-284	102	6.16 ha
TOWNHOUSE - 4 UNITS	303, 305, 306, 308-310, 312, 313, 315, 316, 320-324, 327, 330-334, 337, 340	92	2.10 ha
TOWNHOUSE - 6 UNITS	304, 307, 311, 314, 317-319, 325, 326, 328, 329, 335, 336, 338, 339, 341	96	2.28 ha
FUTURE TOWNHOUSE - 6 UNIT	342	6	0.17 ha
TEMPORARY CUL-DE-SAC / FUTURE TOWNHOUSE	343		0.04 ha
PARK	344-353		2.16ha
STORMWATER POND	354-356		4.23ha
OPEN SPACE	357-360		8.43ha
FUTURE RIGHT OF WAY	361		0.06ha
0.3m RESERVE	362-364		<0.01ha
STREETS			7.1ha
TOTALS		496	40.22ha