

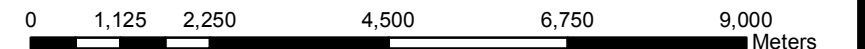
THE COUNTY OF GREY
OFFICIAL PLAN

SCHEDULE B
High Potential
Mineral Aggregate Resources
MAP 1

LEGEND

- Provincial Highway
- County Road
- Local Road
- Seasonal Road
- Aggregate Resource Area
- Mineral Resource Extraction
(Licensed Pits and Quarries)

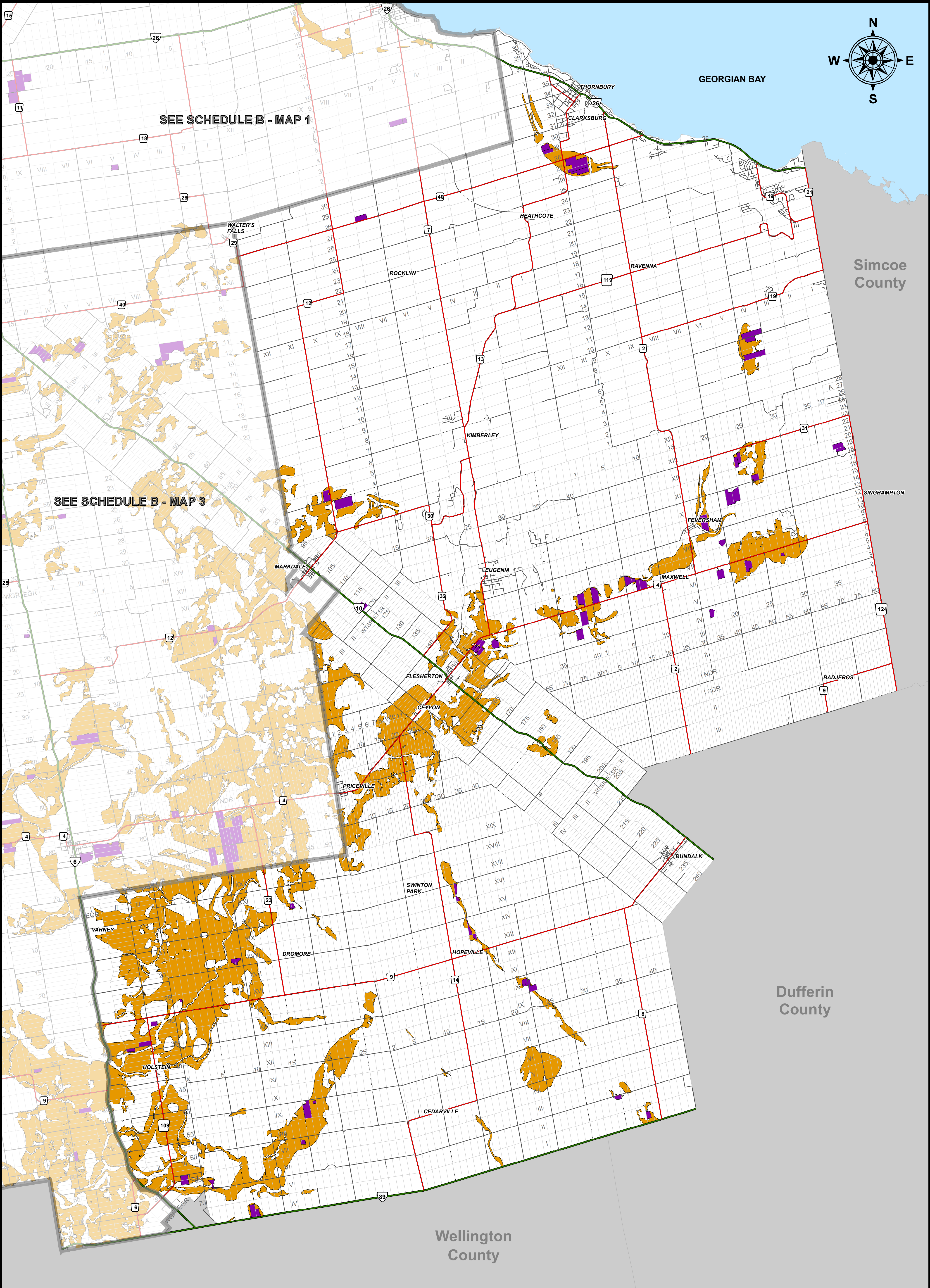
SCALE 1: 95,000



AUTHOR: Grey County Planning and Development
FILE NAME: GR_OP_SchedB_Map1northX36.mxd
APPLICATION: ArcMap
DATE: Consolidated to June 25, 2013
PROJECTION: UTM zone 17N / NAD83
SOURCE: Teranet / Ontario Ministry of Natural Resources

INTERACTIVE MAP: maps.grey.ca
DOWNLOAD PDF: grey.ca

This map is for illustrative purposes only. Do not rely on this map as being a precise indicator of routes, location of features or surveying purposes. This map may contain cartographical errors or omissions.



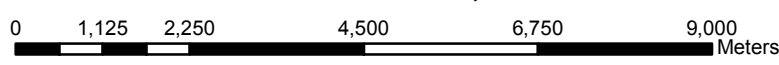
THE COUNTY OF GREY
OFFICIAL PLAN

SCHEDULE B
High Potential
Mineral Aggregate Resources
MAP 2

LEGEND

- Provincial Highway
- County Road
- Local Road
- Seasonal Road
- Aggregate Resource Area
- Mineral Resource Extraction
(Licensed Pits and Quarries)

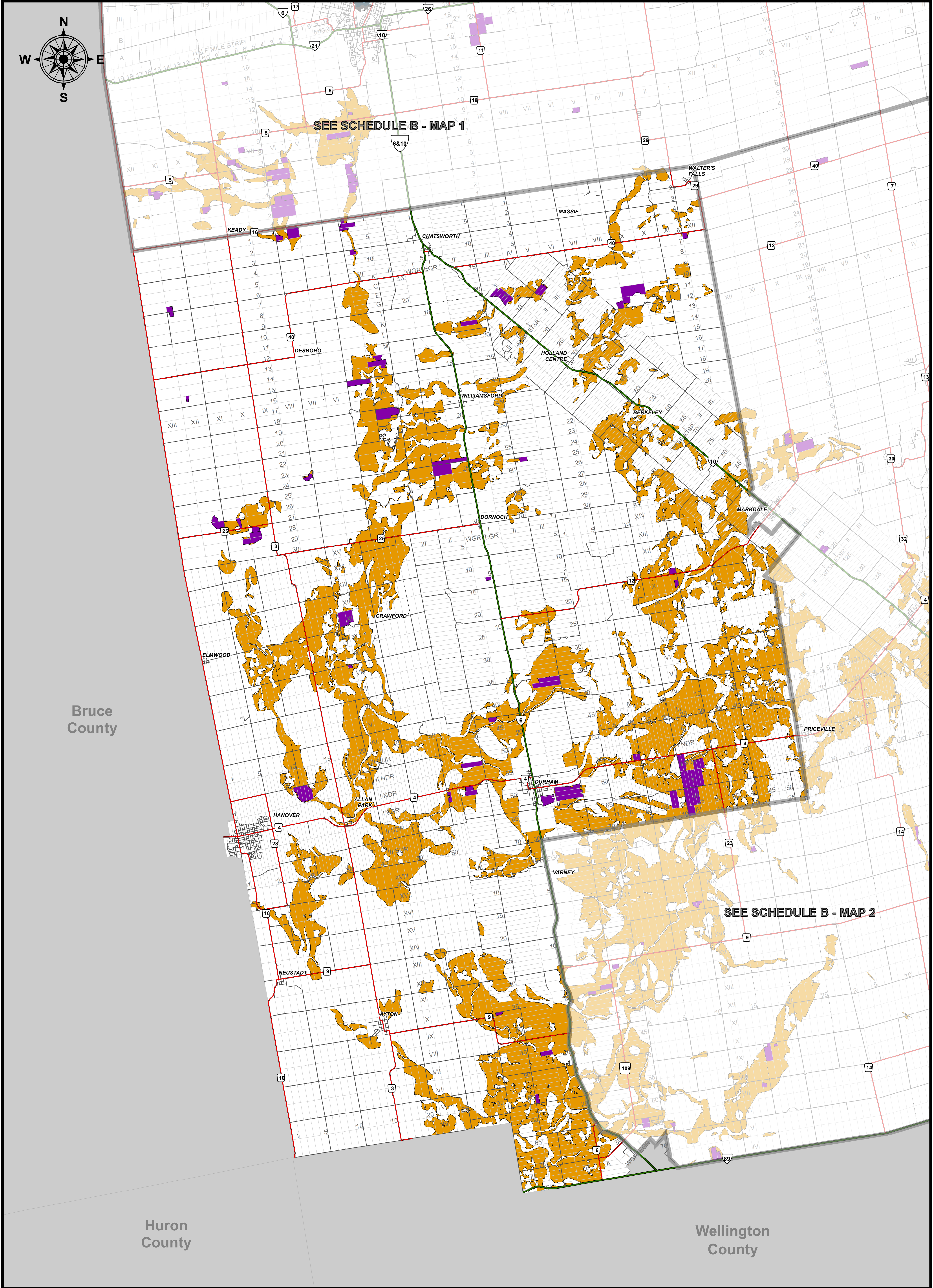
SCALE 1: 95,000



AUTHOR: Grey County Planning and Development
FILE NAME: GR_OP_SchedB_Map2eastX36.mxd
APPLICATION: ArcMap
DATE: Consolidated to June 25, 2013
PROJECTION: UTM zone 17N / NAD83
SOURCE: Teranet / Ontario Ministry of Natural Resources

INTERACTIVE MAP: maps.grey.ca
DOWNLOAD PDF: grey.ca

This map is for illustrative purposes only. Do not rely on this map as being a precise indicator of routes, location of features or surveying purposes. This map may contain cartographical errors or omissions.



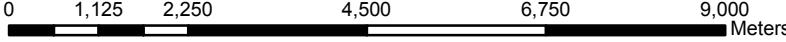
THE COUNTY OF GREY
OFFICIAL PLAN

SCHEDULE B
High Potential
Mineral Aggregate Resources
MAP 3

LEGEND

- Provincial Highway
- County Road
- Local Road
- Seasonal Road
- Aggregate Resource Area
- Mineral Resource Extraction
(Licensed Pits and Quarries)

SCALE 1: 95,000



AUTHOR: Grey County Planning and Development
FILE NAME: GR_OP_SchedB_Map3westX36.mxd
APPLICATION: ArcMap
DATE: Consolidated to June 25, 2013
PROJECTION: UTM zone 17N / NAD83
SOURCE: Teranet / Ontario Ministry of Natural Resources

INTERACTIVE MAP: maps.grey.ca
DOWNLOAD PDF: grey.ca

This map is for illustrative purposes only. Do not rely on this map as being a precise indicator of routes, location of features or surveying purposes. This map may contain cartographical errors or omissions.