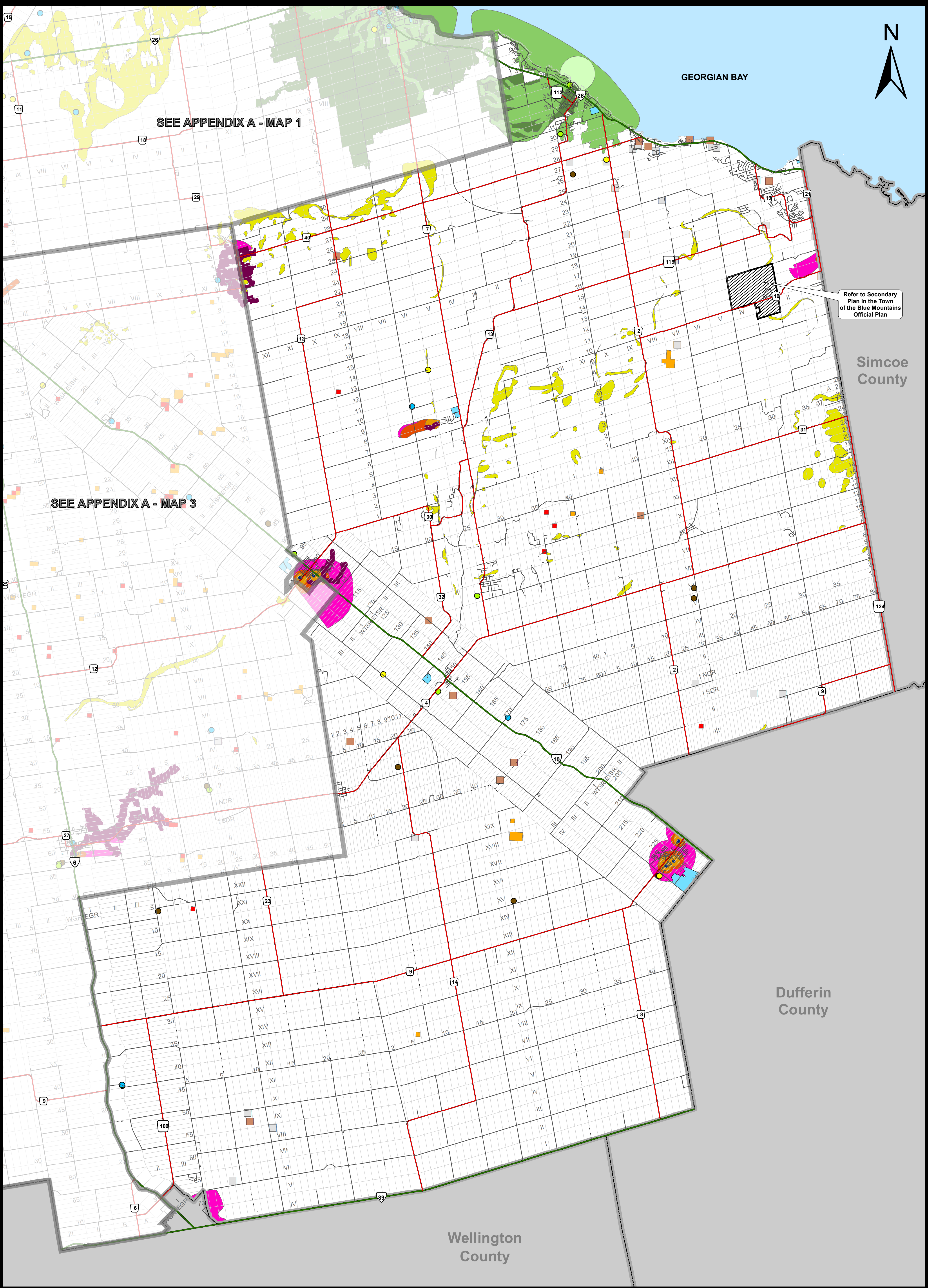


LEGEND	
	Provincial Highway
	County Road
	Local Road
	Seasonal Road
Petroleum Wells	
	Plugged Well
	Unplugged Well
Wellhead Protection Areas	
	Zone A
	Zone B
	Zone C
	Zone D
	Zone E
	Intake Protection Zone 1
	Intake Protection Zone 2
	Intake Protection Zone 3 Events Based Area

	Abandoned Landfill: D-4 Recommended to Clear Site
	Abandoned Landfill: Previously Evaluated Site
	Abandoned Landfill: Cleared Site
	Operating Landfill
	Karst Area
	Wastewater Treatment Facility
	Hazardous Forest Types for Wildland Fires - Extreme
	Hazardous Forest Types for Wildland Fires - High

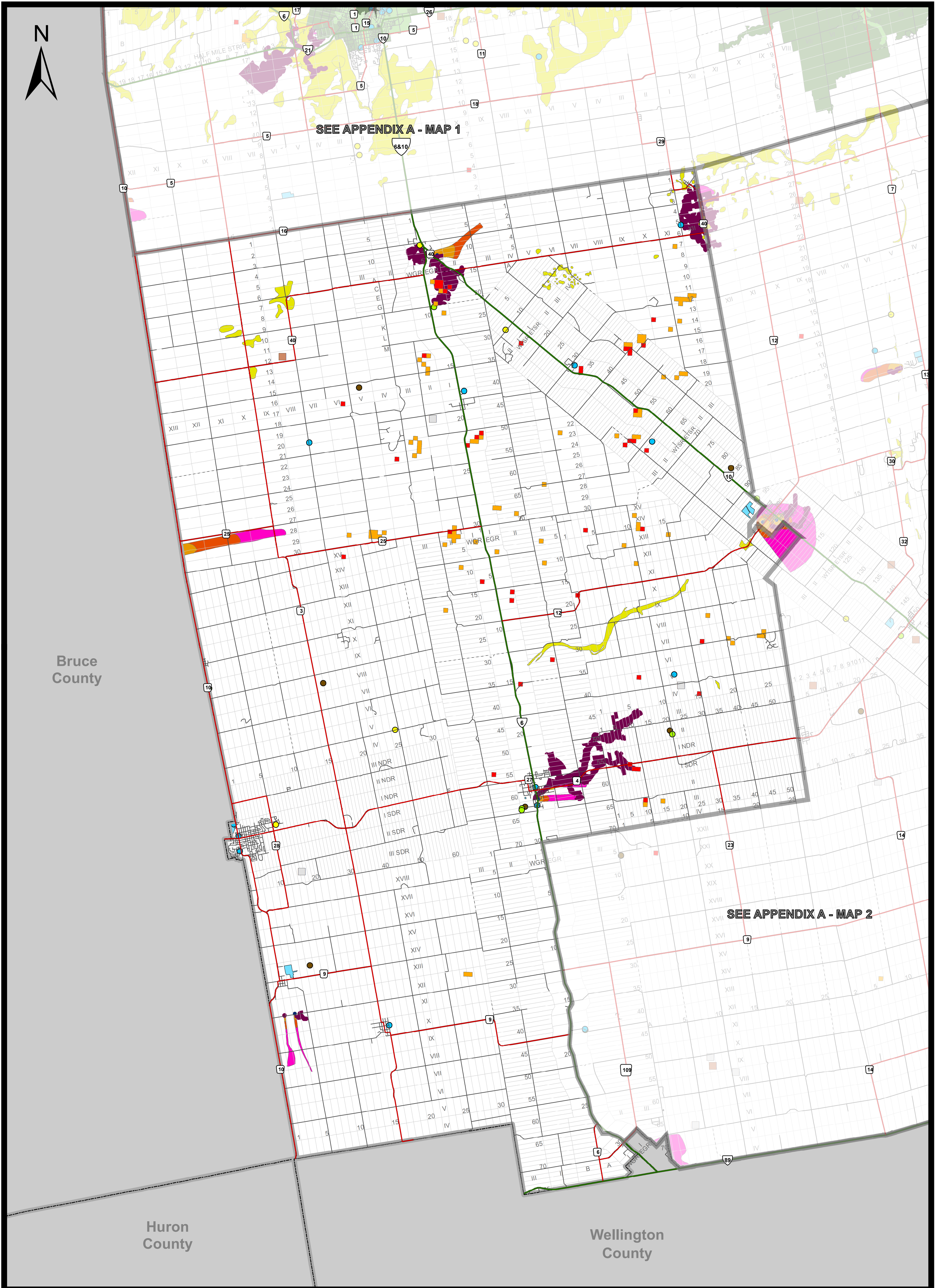


LEGEND

- Provincial Highway
- County Road
- Local Road
- Seasonal Road
- Petroleum Wells**
 - Plugged Well
 - Unplugged Well

- Intake Protection Zone 1
- Intake Protection Zone 2
- Intake Protection Zone 3 Events Based Area
- Wellhead Protection Areas**
 - Zone A
 - Zone B
 - Zone C
 - Zone D
 - Zone E

- Abandoned Landfill: D-4 Recommended to Clear Site
- Abandoned Landfill: Previously Evaluated Site
- Abandoned Landfill: Cleared Site
- Operating Landfill
- Karst Area
- Wastewater Treatment Facility
- Hazardous Forest Types for Wildland Fires - Extreme
- Hazardous Forest Types for Wildland Fires - High



THE COUNTY OF GREY
OFFICIAL PLAN

APPENDIX A Constraint Mapping

MAP 3

LEGEND

- Provincial Highway
- County Road
- Local Road
- Seasonal Road

- Petroleum Wells**
- Plugged Well
 - Unplugged Well

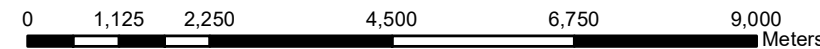
- Intake Protection Zone 1
- Intake Protection Zone 2
- Intake Protection Zone 3 Events Based Area

Wellhead Protection Areas

- Zone A
- Zone B
- Zone C
- Zone D
- Zone E

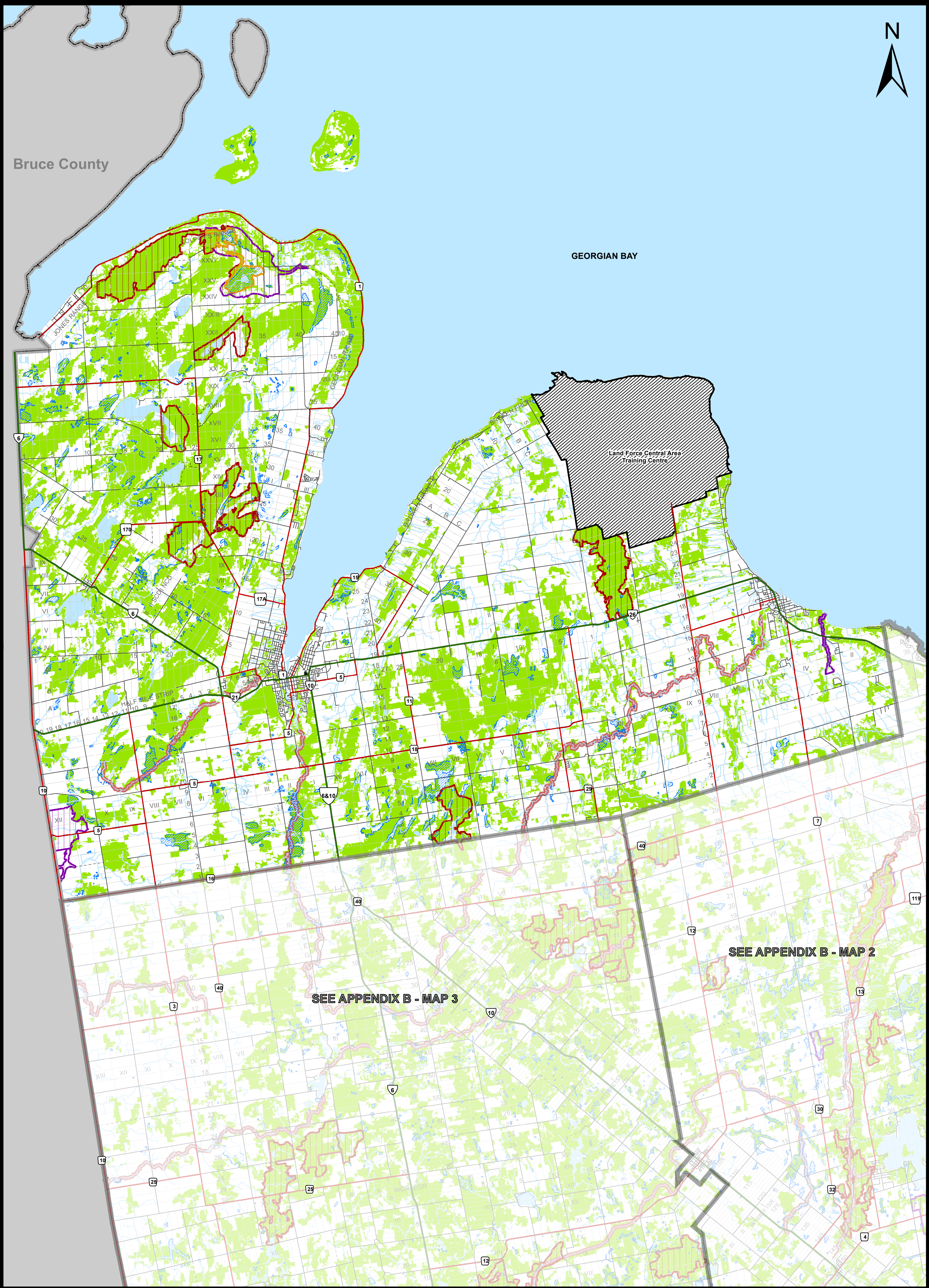
- Abandoned Landfill: D-4 Recommended to Clear Site
- Abandoned Landfill: Previously Evaluated Site
- Abandoned Landfill: Cleared Site
- Operating Landfill
- Karst Area
- Wastewater Treatment Facility
- Hazardous Forest Types for Wildland Fires - Extreme
- Hazardous Forest Types for Wildland Fires - High

SCALE 1:95,000



AUTHOR: Grey County Planning
FILE NAME: GR_OP_ApdxA_Map3westX36.mxd
CONSOLIDATION: May 1, 2023
INTERACTIVE MAP: geo.grey.ca
DOWNLOAD PDF: grey.ca/planning-development

This map is for illustrative purposes only. Do not rely on this map as being a precise indicator of routes, location of features or surveying purposes. This map may contain cartographical errors or omissions.



THE COUNTY OF GREY
OFFICIAL PLAN

**APPENDIX B
Constraint Mapping**

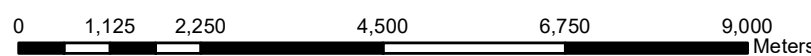
MAP 1

LEGEND

- Provincial Highway
- County Road
- Local Road
- Seasonal Road
- Stream / River
- Lakes
- Other Wetlands

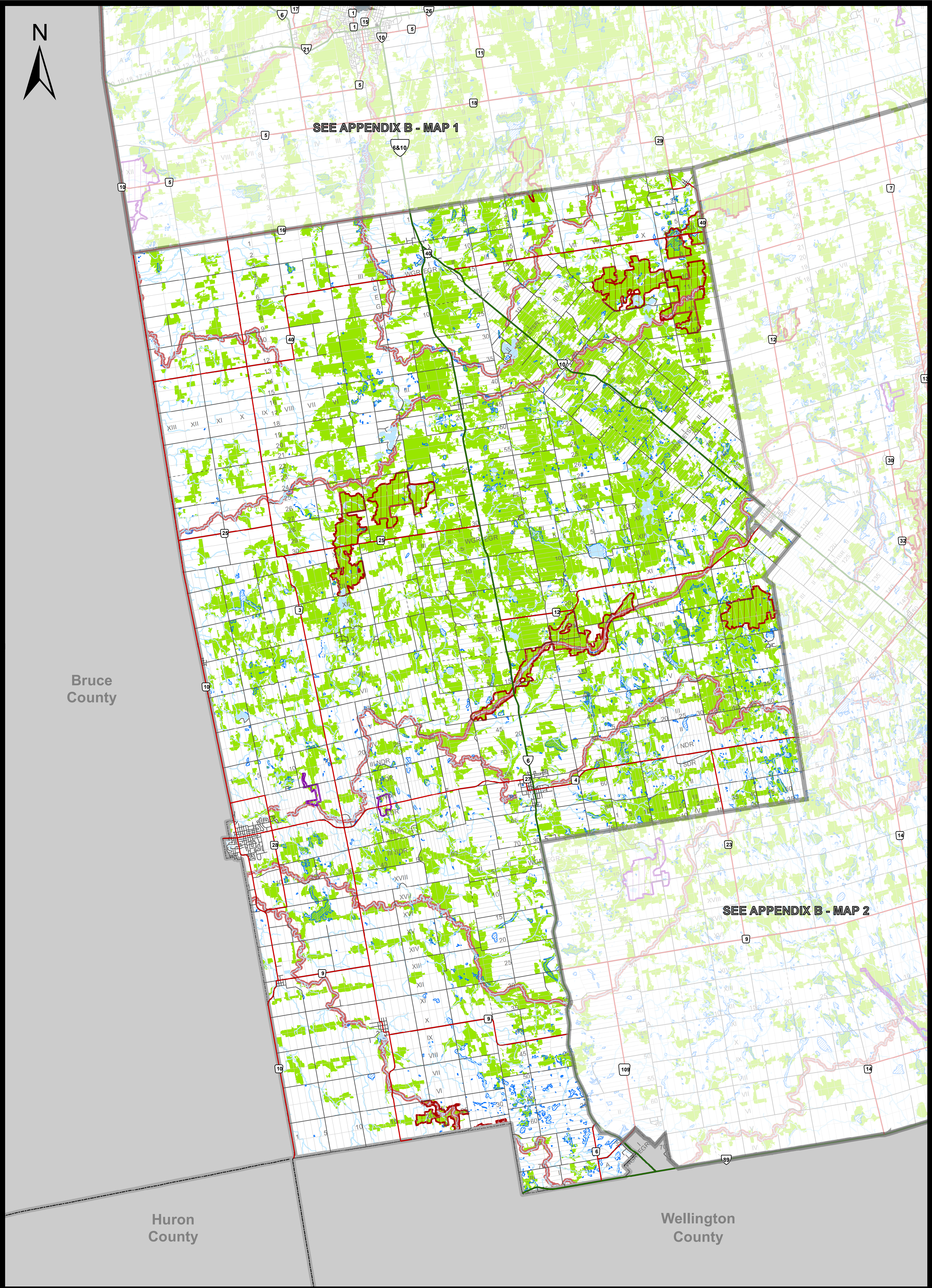
- Significant Earth & Life ANSI
- Significant Earth ANSI
- Significant Life ANSI
- Significant Valleylands
- Significant Woodlands

SCALE 1:95,000



AUTHOR: Grey County Planning
FILE NAME: GR_OP_ApdxB_Map1northX36.mxd
CONSOLIDATION: May 1, 2023
INTERACTIVE MAP: geo.grey.ca
DOWNLOAD PDF: grey.ca/planning-development

This map is for illustrative purposes only. Do not rely on this map as being a precise indicator of routes, location of features or surveying purposes. This map may contain cartographical errors or omissions.



THE COUNTY OF GREY
OFFICIAL PLAN

APPENDIX B
Constraint Mapping

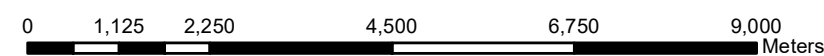
MAP 3

LEGEND

- Provincial Highway
- County Road
- Local Road
- Seasonal Road
- Stream / River
- Lakes
- Other Wetlands

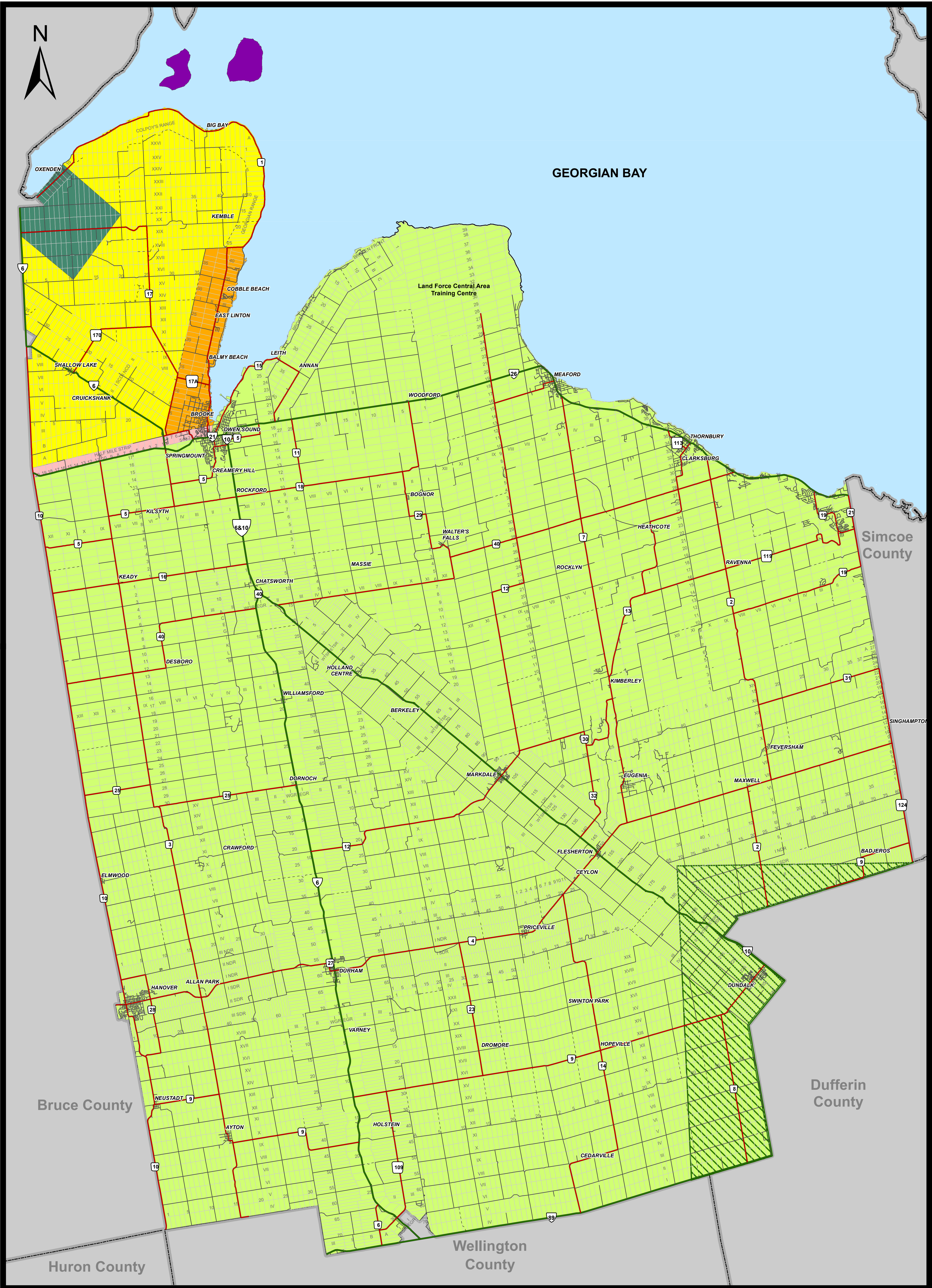
- Significant Earth & Life ANSI
- Significant Earth ANSI
- Significant Life ANSI
- Significant Valleylands
- Significant Woodlands

SCALE 1:95,000



AUTHOR: Grey County Planning
FILE NAME: GR_OP_ApdxB_Map3westX36.mxd
CONSOLIDATION: May 1, 2023
INTERACTIVE MAP: geo.grey.ca
DOWNLOAD PDF: grey.ca/planning-development

This map is for illustrative purposes only. Do not rely on this map as being a precise indicator of routes, location of features or surveying purposes. This map may contain cartographical errors or omissions.



THE COUNTY OF GREY
OFFICIAL PLAN

APPENDIX C

Traditional Territories of the Saugeen Ojibway Nations and Six Nations of the Grand River

LEGEND

- Provincial Highway
- County Road
- Local Road
- Seasonal Road

Saugeen Ojibway Nations Treaty / Claim Areas

- Aboriginal Title Claim Area
- Treaty 67 Area (1851)
- Treaty 82 Area (1854)
- Treaty 45 1/2 Area (1836)
- Treaty 72 Area (1854)
- Treaty 93 Area (1861)
- Peninsula Islands *

Six Nations of the Grand River Treaty Area

- Treaty Haldimand (1784)

* The islands around the Peninsula were subject to various treaties but many small islands on the Lake Huron side were returned to the First Nations in 1980

SCALE 1: 135,000

0 1,625 3,250 6,500 9,750 13,000 Meters

AUTHOR: Grey County Planning
FILE NAME: GR_OP_ApdxC_Map0X36.mxd
CONSOLIDATION: May 1, 2023
INTERACTIVE MAP: geo.grey.ca
DOWNLOAD PDF: grey.ca/planning-development

This map is for illustrative purposes only. Do not rely on this map as being a precise indicator of routes, location of features or surveying purposes. This map may contain cartographical errors or omissions.



APPENDIX D
Functional Road Classification
and Planned Corridors

LEGEND

- Provincial Highway
- Provincial Highway Connecting Links
- County Arterial
- County Collector
- County Local
- Municipal Local

Potential Planned County Corridor

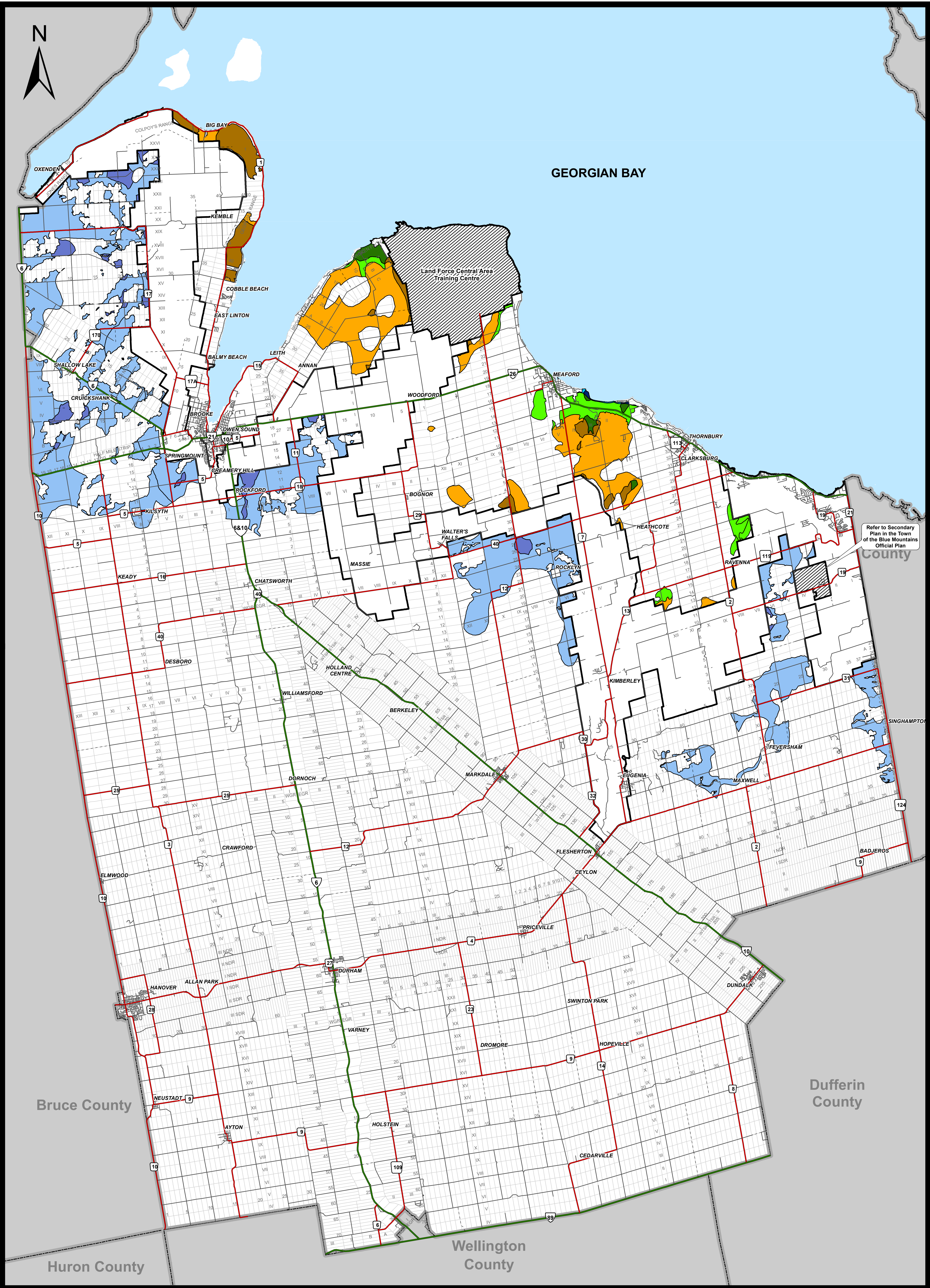
- Potential Planned County Arterial
- Potential Planned County Collector

SCALE 1: 135,000

0 1,600 3,200 6,400 9,600 12,800 Meters

AUTHOR: Grey County Planning
FILE NAME: GR_OP_ApdxD_Map0X36.mxd
CONSOLIDATION: May 1, 2023
INTERACTIVE MAP: geo.grey.ca
DOWNLOAD PDF: grey.ca/planning-development

This map is for illustrative purposes only. Do not rely on this map as being a precise indicator of routes, location of features or surveying purposes. This map may contain cartographical errors or omissions.



APPENDIX E
Bedrock and Shale Resources

LEGEND

- Provincial Highway
- County Road
- Local Road
- Seasonal Road

Selected Bedrock Resource Areas

Drift Thickness

- Paleozoic bedrock outcrop; areas of exposed bedrock partially covered by a thin veneer of drift. Drift Thickness is generally less than 1 m.
- Paleozoic bedrock covered by drift. Drift Thickness is generally 1 to 8 m. Bedrock outcrops may occur.

Jagger Hims Limited and Rowell, D.J. 2009.
Aggregate resources inventory of Grey County,
southern Ontario; Ontario Geological Survey,
Aggregate Resources Inventory Paper 180, 71p.

Shale Resource Areas

- Queenston Formation less than 1 m
- Queenston Formation 1 m to 8 m
- Georgian Bay Formation less than 1 m
- Georgian Bay Formation 1 m to 8 m
- Blue Mountain Formation less than 1 m
- Blue Mountain Formation 1 m to 8 m

Rowell, D.J. 2012. Shale resources inventory of southern Ontario;
An update; Ontario Geological Survey, Open File Report 6278, 46p.

SCALE 1: 135,000



AUTHOR: Grey County Planning
FILE NAME: GR_OP_ApdxE_Map0X36.mxd
CONSOLIDATION: May 1, 2023
INTERACTIVE MAP: geo.grey.ca
DOWNLOAD PDF: grey.ca/planning-development

This map is for illustrative purposes only. Do not rely on this map as being a precise indicator of routes, location of features or surveying purposes. This map may contain cartographical errors or omissions.