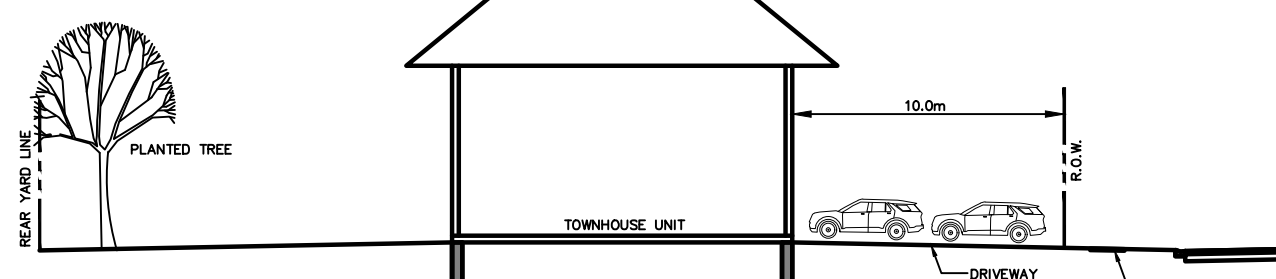
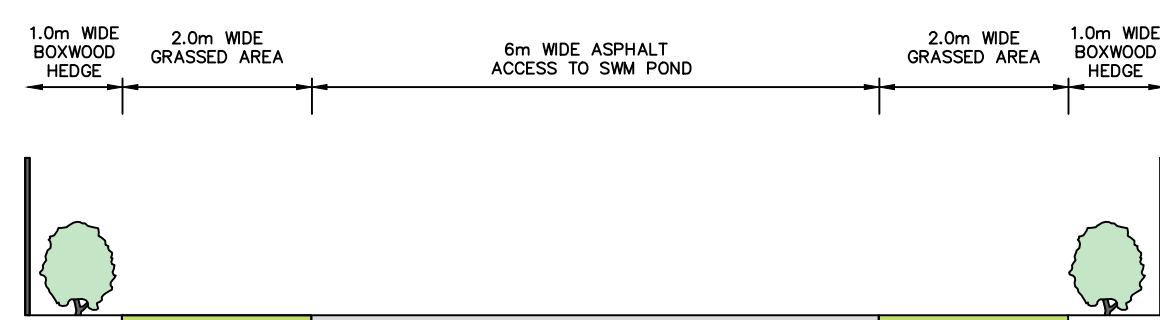
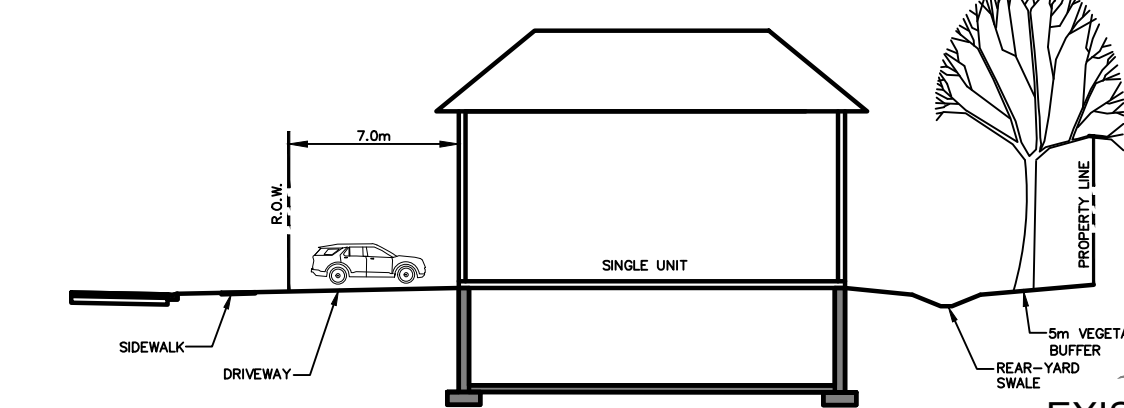


SWM POND ACCESS BLOCK DETAIL



TOWNHOUSE UNIT CROSS-SECTION



SINGLE UNIT CROSS-SECTION



4m BUFFER ABUTTING HIGHWAY CONTAINING
SUCCESSIONAL TREE PLANTINGS: NATIVE TREE SAPPLINGS,
OF BOTH LARGER AND SMALLER SIZES, WITH AN
ABUNDANCE OF CONIFER, TO BE PLANTED AT APPROXIMATE
2m SPACING