



ORIGINAL 13 FEBRUARY 2023

**STAGE 2 ARCHAEOLOGICAL PROPERTY ASSESSMENT
SUPPLEMENTARY DOCUMENTATION**

*Property at the Southeast Corner of Grey Roads 2 and 40,
Part of Lot 27, Concession 8 West, (Geographic Township of Collingwood),
Town of the Blue Mountains, County of Grey
(AMICK Corporate File #2022-965/MCM File #P038-1198-2022)*

SUBMITTED TO:

Ontario Ministry of Citizenship and Multiculturalism (MCM)
Archaeology@Ontario.ca

SUBMITTED BY:

AMICK Consultants Limited
Phone: (519) 432-4435
Email: mcornies@amick.ca
www.amick.ca

LICENSEE:

Marilyn E. Cornies BA CAHP (P038)

MCM NUMBER: P038-1198-2022

CORPORATE PROJECT NUMBER: 2022-965

13 FEBRUARY 2023

GPS COORDINATE DATA

GPS Receiver:

Specifications Juniper Archer Longbow

Form-factor	Ultra-rugged remote positioning GPS handheld
CPU Speed	Intel PXA270/520 MHz
OS	Windows Mobile 6.1
RAM/ROM	128MB RAM/512MB Flash
Card slots	SD/SDHC Card with SDIO support
Interface	RS232 9-pin serial
GPS	2-5 meter (S/A off); 2 meters (WAAS)
Wireless	Archer: Bluetooth Class II; optional WiFi and wireless modems via cards Longbow/ikeGPS adds: 3 or 5 megapixel camera, DGPS, eCompass, laser rangefinder

Project Datum – Hydro Box

Project datum is a hydro pole near the northeast corner of the study area along the south side of Highway 40.

Latitude/Longitude

44.537527, -80.420241

UTM Grid reference

17T 546060.00 Easting, 4931741.00 Northing

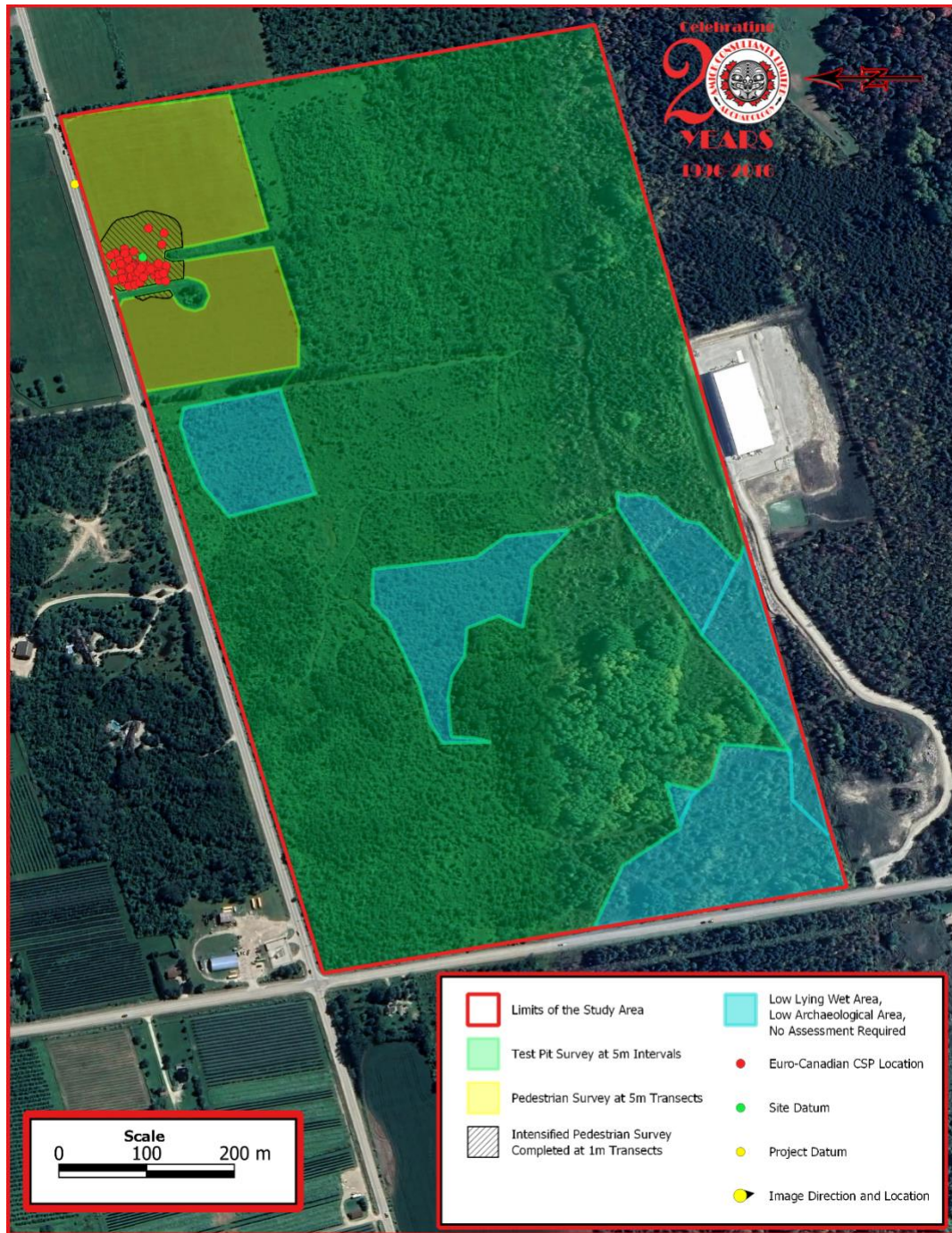
NAD 27

J. Lawrence (BdHc-29) Site Limits and GPS Coordinates

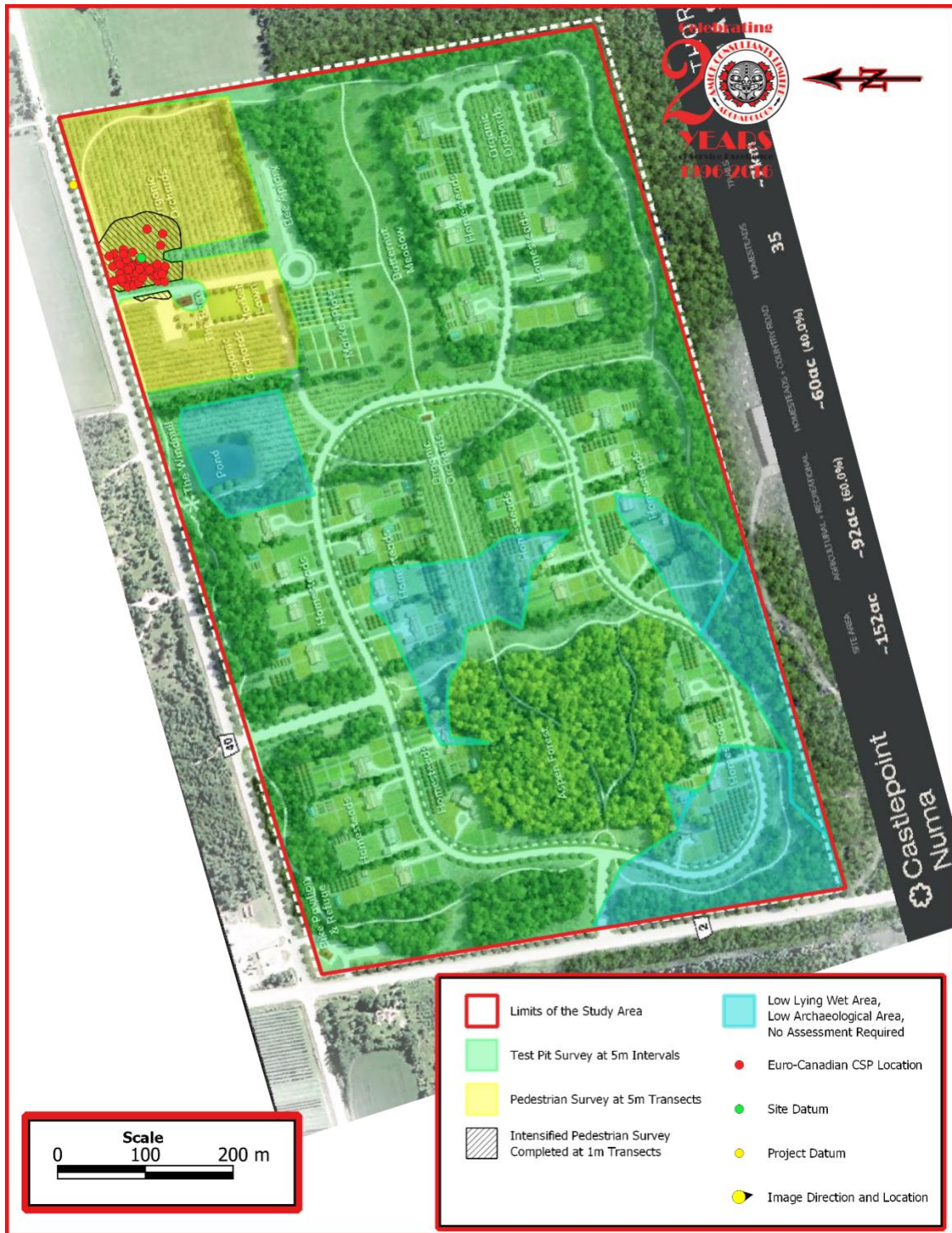
UTM Grid reference 17T

Point	Easting	Northing	Quantity	Limit
29	545917.71	4931688.73	1	North
45	545977.12	4931650.93	1	East
14	545934.69	4931630.40	2	South
11	545917.43	4931630.89	1	West
66	545937.86	4931657.34	10	Center

SUPPLEMENTARY MAPS



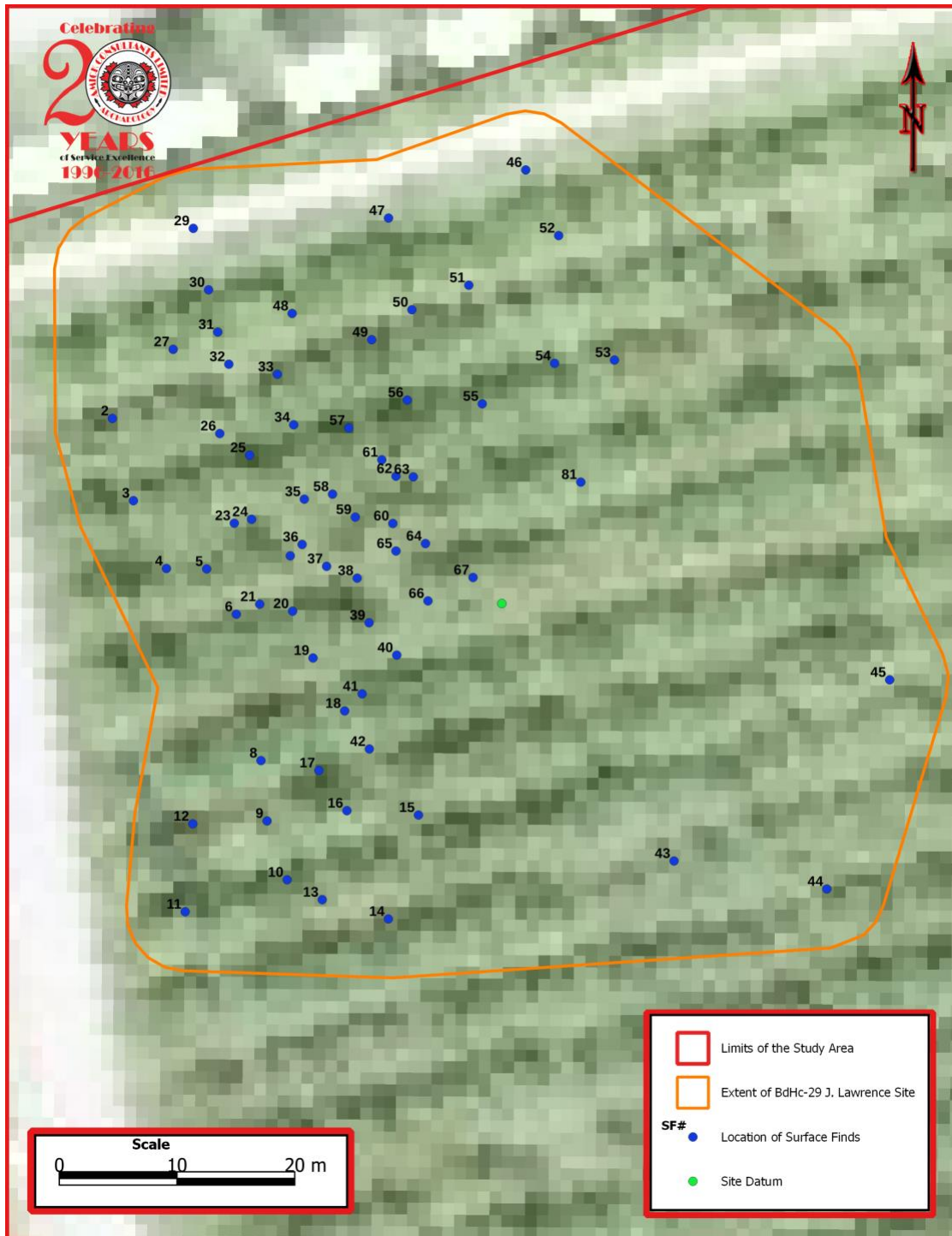
MAP 6 AERIAL DEMONSTRATING ARCHAEOLOGICAL SITES ENCOUNTERED (GOOGLE 2020)



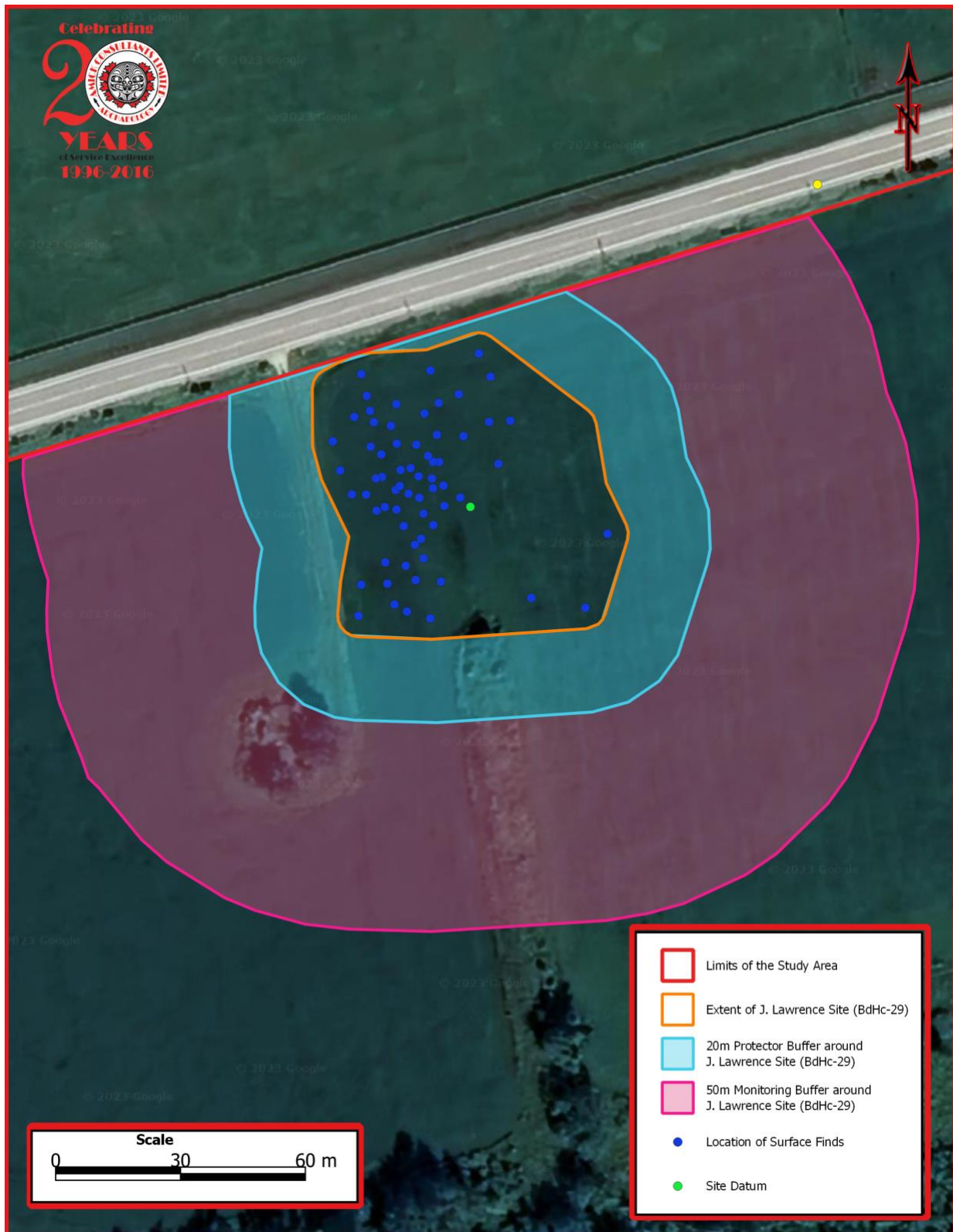
MAP 7 DETAILED SITE PLAN DEMONSTRATING ARCHAEOLOGICAL SITES ENCOUNTERED (AFTER THORNBURY ACRES INC. 2022)



MAP 8 **AERIAL CLOSE UP OF J. LAWRENCE (BDHC-29) SITE**
AND CSP NUMBERS (GOOGLE 2020)

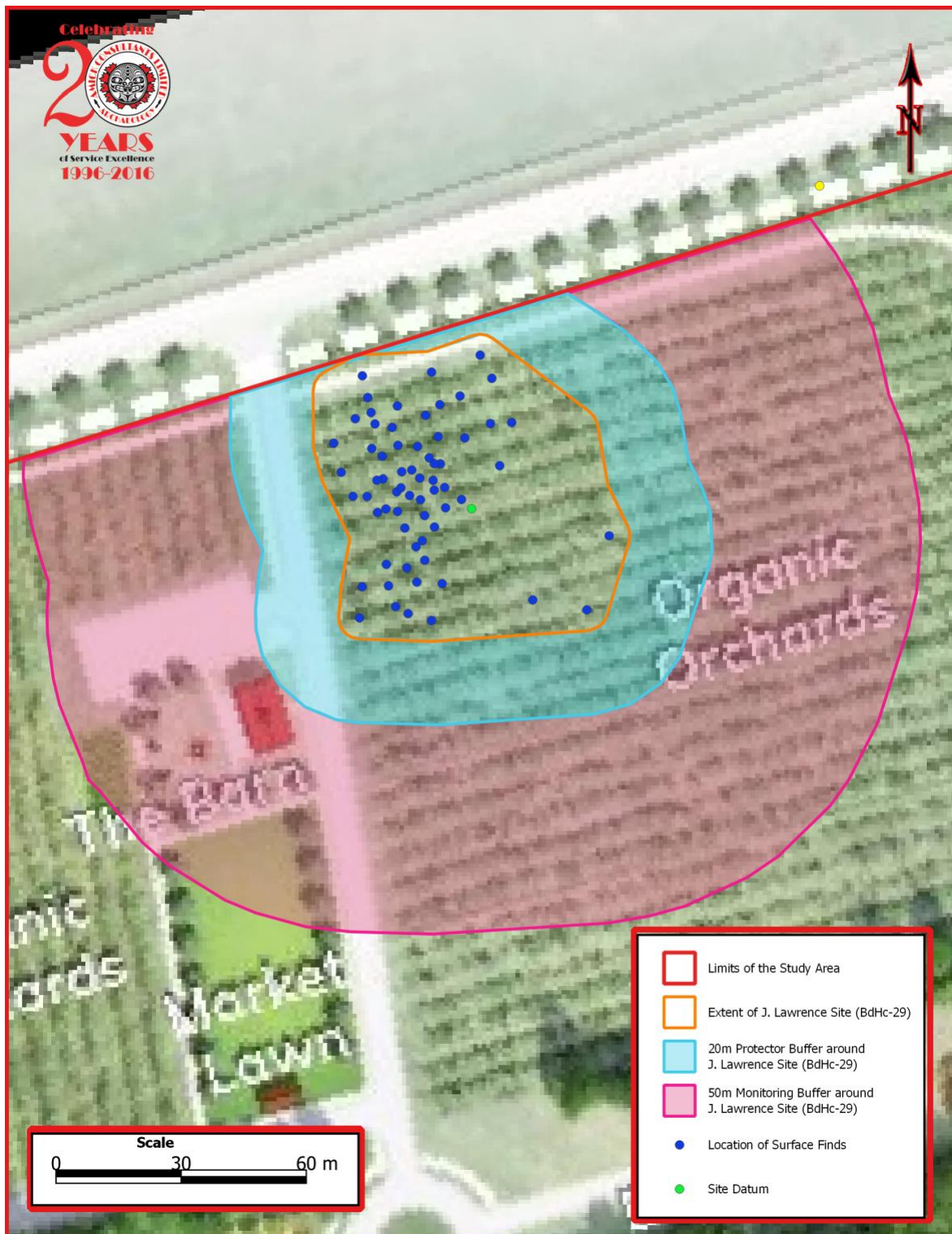


MAP 9 **DETAILED SITE PLAN CLOSE UP OF J. LAWRENCE (BdHc-29)**
AND CSP NUMBERS (AFTER THORNBURY ACRES INC. 2022)



MAP 10

AERIAL OF BUFFERS FOR J. LAWRENCE (BdHc-29)
AND CSP



MAP 11 **DETAILED DEVELOPMENT OF BUFFERS FOR J. LAWRENCE (BdHc-29) AND CSP (AFTER THORNBURY ACRES INC. 2022)**