

S A A R



Environmental Limited

May 29, 2020 +SVCA Response

Environmental Impact Assessment
for R.H. Bye Construction Ltd.

263512 Southgate Road 26, Egremont Concession 21,
Part Lots 2-4, Southgate Township, County of Grey
RP 16R 6386 Parts 1 and 2, Pt. Part 3

TABLE OF CONTENTS

1.0	SUMMARY	3
2.0	LOCATION	4
3.0	EXISTING FEATURES	5
4.0	PROPOSED USE	6
5.0	BIOPHYSICAL INVENTORY	7
6.0	NATURAL HERITAGE POLICY	27
6.1	FISH HABITAT	27
6.2	SIGNIFICANT WETLANDS AND COASTAL WETLANDS	27
6.3	SIGNIFICANT WOODLANDS	28
6.4	SIGNIFICANT VALLEYLANDS	29
6.5	AREAS OF NATURAL AND SCIENTIFIC INTEREST	29
6.6	SIGNIFICANT WILDLIFE HABITAT	29
6.7	HABITAT OF ENDANGERED THREATENED WILDLIFE	30
6.8	SEASONAL CONCENTRATION AREAS	30
7.0	IMPACT ASSESSMENT	32
8.0	MITIGATION	53
9.0	CONCLUSIONS	55
APPENDICES		

1.0 SUMMARY

A 29 lot subdivision is being proposed on a portion of an existing golf course and resort; the Homestead Golf Course and Winter Resort. This is an operating 18 hole golf course with a clubhouse, restaurant and shoreline rental cottages along Wilder Lake.

SAAR conducted seasonal wildlife surveys from April through August of 2018 with follow up in 2019 to assess whether 20.8 hectares of a 50 hectare parcel could support 29 estate residential lots without significant negative impact to natural heritage we documented on and near the site which included Brook Trout nursing habitat, cool water riparian creek support of herptiles, grassland birds and interior forest breeding birds in the southern forest patch off site.

SAAR concluded the parcel size and type of soils provide healthy setback from sensitive ecology we identified, conforming with the Species at Risk Act, Endangered Species Act, Provincial Policy statement (PPS), Planning Act and lower and upper tier Official Plan policy. Stormwater management treatment in particular, was carefully evaluated on site together with GMBLuePlan to design appropriate linear swales adjacent to wetlands, ensuring continued water quality and quantity above pond and creek features. Ponds currently culverted beneath the Homestead Golf Course entry road were provided with twin culverts; a dry and wet culvert to facilitate wildlife passage during all weather events.

Split zoning is invoked for rear lot fabric backing toward wetlands with Environmental Protection areas identified in the Planning Report Proposed Zoning Figure 6. An Enhancement Planting Plan further ensures that the development conforms to the Provincial Policy Statement (PPS) by maintaining, enhancing and repairing wildlife corridors (PPS S.2.1.2). The property is currently zoned inland lakes and shoreline permitting the proposed shoreline residential land use application.

SAAR audited the site with team engineers and provided detail on preferred outlet locations for stormwater management as well as the type of enhanced treatment above the outlets. This included detail on the type of robust emergent to be planted in linear swales for enhanced attenuation of nutrient. Enhanced treatment will attenuate for eighty percent (80%) of storm event suspended solids. Storm events from the 29 lots, and other portions of the parcel, would have quality and quantity control in the form of two infiltration ponds, one wet pond with two enhanced grass swales; treatment that will be available on site by the completion of the first phase of development.

The property meets Wilder Lake to the east, a forest patch to the south and agricultural lands to the west. An outlet of Wilder Lake, Camp Creek, traverses the northern portion of the parcel and is expressed as a

few small pond chains along a forested riparian creek feature. The ponds that are “on line”, associated with this surfacewater drainage, support specific ecology that has been provided with tiers of mitigation for conservation. An “off line” small ponded area west of the existing entrance to the golf course does support ecology as well but at lower levels; small numbers of spring amphibians calling during dusk wildlife surveys. The off line pond is the most southerly pond.

3.0 PROPOSED USE

The 29 lot subdivision would be completed in two phases with the initial internal road and shoreline lots, followed by phase two completing the looped roadway and interior lots. Existing shoreline rental cabins would be removed, updating the historical septic systems by constructing new systems for the new shoreland lots further upslope from Wilder Lake.

The existing 18 hole golf course would remain in place. The study team evaluated a number of early iterations of the proposed lot layout, attending the site with stormwater management engineers from GM BluePlan to finalize enhanced treatment locations and storm pond locations within the subdivision.



Figure 2: Site Plan of Estate Residential Subdivision

4.0 EXISTING FEATURES

The site supports an existing golf course and resort known as the Homestead Golf Course and Winter Resort with an 18 hole golf course, clubhouse, outbuildings including a barn and five panabode rental cottages along the shore of Wilder Lake. Wilder Lake flanks the east limits of the parcel, and the Camp Creek inlet from Wilder Lake enters the parcel at the northeast corner, flowing through a chain of small wetland pond features and carrying on westerly past a barn to leave the site, travelling northerly through a cross culvert at Southgate Road 26. The broader landscape is one of farming, rural residential, forest and wetland habitat.

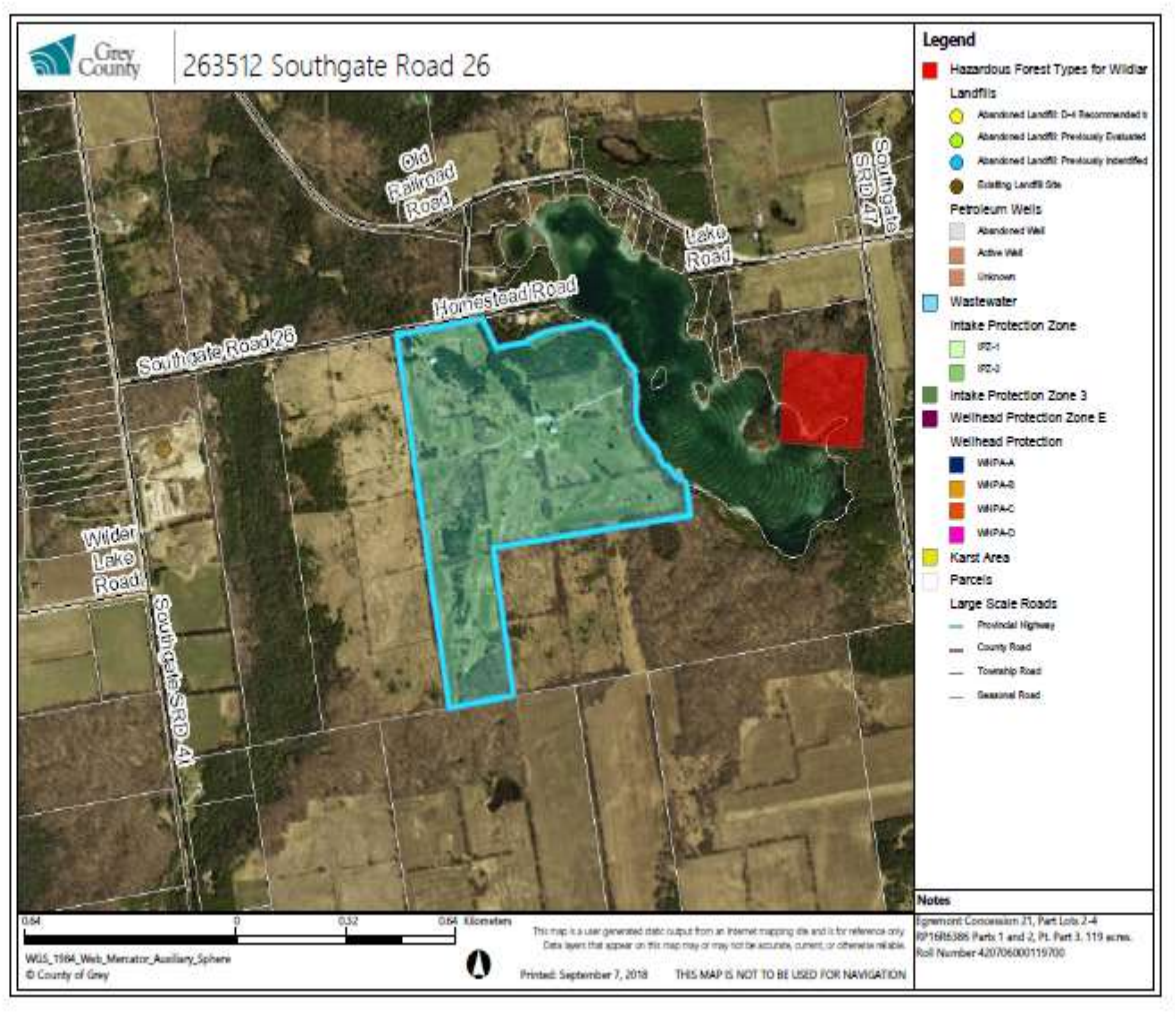


Figure 3: Parcel relative to historical landfill sites (red)

The older landfill strengthens the team resolve in evaluating the effect of stormwater and septic nutrient in a pre and post development scenario for this site. Effective mitigation has been designed during our team reconnaissance and this is detailed in the impact assessment section of the EIA.

5.0 BIOPHYSICAL INVENTORY

5.1 OVERVIEW

The landscape is a mosaic of fallow pasture, wetland and upland mixed forest, with adjacent lands residential development, cottaging, farming and small business. Since the historical land uses of the regional have been dominated by agriculture there is an inactive barn and outbuilding also on site, and a barn on westerly adjacent land and similarly outward from the Homestead Road.

The site supports a portion of Wilder Lake shoreline, a small chain of wetland ponds, inland grassed open areas under golf course land use, planted thickets and surrounding forests of deciduous, coniferous and mixed tree cover. The golf course on site will remain in the post construction environment. The golf course manicured and mowed greens and fairways are flanked by pockets of planted conifers including Scots and White Pine. Specific areas of the active course that may have potential for wildlife – such as exposed sands for potential egg laying use by the Species of Concern Snapping turtle – are detailed within the EIA. Historic signs of agrarian use and past settlement include lilacs, perennials and weedy species such as Cow Vetch, Common Plantain, Curly Dock, Coltsfoot, White Clover, Dandelion, Mint, Canada Thistle, grasses including Poa and Phleum as well as some Wheat. Open meadow and Hawthorne thicket birds near the clubhouse include the American Phoebe, Eastern Kingbird, Chipping Sparrow, Gray Catbird and the Great-crested Flycatcher that was observed in spring. A portion of adjacent open fields also support a measure of rare ground nesting bird grassland habitat for the Bobolink.

5.2 SEASONAL SURVEYS

DATE	SURVEY TYPE	TIME / DURATION	WEATHER CONDITIONS
April 23	Migration and Early Herptiles	Dusk for AMWO Till midnight for Whip- poor-will	6 Celcius at 7pm, Part cloud Beaufort 2 WF, CH
May 14	EMR I Herptile Evening Chorus to 500m	9pm-12 Dusk - midnight	8 Celcius at 9pm Beaufort 1 CH, SP
June 15	BB Survey Bobolink I	6 am-8am	10 Celcius at 6 a.m. Slight cloud Beaufort 1
July 19	Bobolink II Survey Pond and Littoral Zone Survey Clubtail Netting	8-9am 10am-2pm	22 Celcius, Sun Beaufort 2 South Forest REV BOBO SW Field
August 13	SAR Surveys Including Butternut	4 hours	28 Celcius, Sun Beaufort 2
September Barn Swallow Outbuilding Inspections	Swallow Nest Evidence Check	2 hours	Celcius Beaufort

SAAR also attended the site on October 9, 2018 with SVCA for a joint site inspection.

5.2.2 Survey Methodology

- Spring Herpetofaunal Surveys (2)
- Spring Moonlit Survey
- Summer Breeding Bird Early Morning Chorus (2 inspections in June, 15 days apart as per CWS Standards)
- Grassland Bird Nesting Survey
- Dusk and Pre dawn Bat Survey
- Dragon and Damselfly Inspections
- Vegetation Inspections Throughout

Field surveys were more detailed immediately adjacent to the proposed rear lot fabric of the estate residential subdivision, and beyond that northwesterly to Homestead Road were reconnaissance transects with four tie in points using GPS.

5.3 FAUNA

Mammal observations include:

- Red Squirrel
- White-tailed deer
- Eastern Chipmunk
- Striped Skunk
- Woodchuck
- Porcupine

5.4 HERPETOFAUNA

Dusk breeding chorus inspections confirmed the following amphibian breeders:

- Western Chorus Frog
- Spring Peeper and Tree Frog
- Wood Frog

Herptile surveys included dusk taped calls and metal 1m² blocks left on site 2 days for snake species.

5.5 VEGETATION

The parcel supports a mixture of existing manicured golf greens, trails and a road system leading to both the clubhouse and restaurant, as well as the shoreland rental cottages.

The main vegetation types surrounding this altered habitat are coniferous and mixed forest as well as wet land habitats that ring a small connected chain of inland ponds. The ponds receive their water from a Wilder Lake inlet.

Detail on the vegetation communities and a color photographic diary follow.



Color Plate 1: Red squirrel activity at golf course margins near the clubhouse

Littoral Zone

The nearshore submerged vegetation included Coontail and Eurasiall Milfoil, with floating aquatic pondweeds and robust emergents. Pondweeds included *Potamogeton natans*, Bulhead Lily and emergent such as Torrey-three square and *Scirpus rubrotinctus* (MAS2-6 elements along Wildler Lake). The immediate shoreline vegetation requires retention as it supported a rare odonate, *Aeshnae* travelling from shoreline feeding forays between Wilder Lake and the inland riparian pond chain.



Color Plate 2: Submergent Eurasian Milfoil and floating pondweeds (*Potamogeton natans*).



Color Plate 3: *Libellula pulchella* Twelve-spotted Skimmer amidst *Eupatorium maculatum* Joe-pye-weed



Color Plate 4: Salmonids included Brook Trout and a few Brown Trout



Color Plate 5: Hagen's Bluet *Enallagma hageni* in Pond X

The open pond and riparian connection to the north Pickerel Weed pond support a mosaic of ELC types: OAO Open Water, SAS1-1 Pondweed, SAS1-4 Water Milfoil and SAF1-1 Bullhead Lily (ELC Map).

The southerly open pond flows into the northern salmonid nursery which is a relatively small (30m²) area of dense Pickerel Weed (SAM1-1). Many of the cyprinid size salmonids and some young Wood frog can be seen below.



Color Plate 6: *Pontederia cordata*

All the existing in pond vegetation, pond margin plant cover and bank vegetation is important for the fishery. Natural mortality of eggs can occur during winter months if water depths plummet below a metre, and the northerly pool provides 1m depths during summer conditions. Second to water is an ample food source, then suitable conditions for their winter habitat after fall spawning. These piscivores eat insects, including nymph stages of dragonflies attached to vegetation, worms, crayfish, zooplankton, fish including their own species. The creek offers excellent riffle and gravel material for female fish to dig the “redds”, the nests for depositing eggs late September through November. Incubation occurs over part of the winter months and

the highest mortality is in the first few months for young of the year (YOY). So it is important to contain any road de-icing material for the main entrance from entry into the pond and creek system through a combination of setbacks, and vegetation buffers at pinch points.



Color Plate 7: Riffle habitat for salmonids along riparian corridor of pond system



Color Plate 8: Odonate surveys along southern open pond lined with narrow-leaved cattail and *Leerzia*.

Wilder Lakeshore FOM5, Backshore FOD5

The shoreline aquatic zone benefits from the canopy shade from white cedar, white birch, white ash, black cherry with a grassy understory of *Leerzia* and *Danthonia* supporting courting Monarch in September. Forbs included Boneset, Nightshade, Common Milkweed and Daisy Fleabane.

The shore is predominantly White Cedar with scattered clusters of Red-osier Dogwood and Reed Canary Grass grading into a more deciduous inland fringe of sugar maple-red oak-white birch-black cherry-scots pine and trembling aspen. Conifer does come into the upland deciduous FOD5 but at less than the 25% coverage required in the ecological land classification (ELC) criteria for naming vegetation communities.

Rental cottages are situated within 20m of the shoreland and these will be removed.



Color Plate 9: Shoreline cottage rental road



Color Plate 10: Wilder Lake shoreline viewed from north property limits looking south



Color Plate 11: Torrey Three-square robust emergent with young Brook Trout at Wilder Lake shoreline



Color Plate 12: Wilder Lake shoreline with historical area of dock with campfire and recreational use

Upland Shoreland Deciduous Forest FOD5

Adjacent inland forest cover is FOD5 dominated by deciduous tree species including sugar maple, basswood, black cherry, Large-tooth Aspen, American elm, white ash, balsam poplar but with less than a quarter of conifer mixtures as well, including white cedar, white pine and scots pine. Shrub layers in the understory are comprised of Elderberry, Viburnum acerifolium, Red-osier Dogwood and Silky Dogwood with Chokecherry. Wild Grape is present throughout the site but also here with Equisetum, Orange Hawkweed, Solomon's Seal, Twisted Stalk, Goldenrod, Spotted Knapweed, Wild Carrot and Wood Violet.

Inland Hedgerows FOM6-1

These patches are remnants from agrarian land uses historically, and because they were left as hedgerows the nearby conifer component may have succeeded in to join hardwoods through wind and animal dispersal of cone material. Trees include hardwoods like sugar maple, basswood, white ash and black cherry and a smaller component of conifer (<25%) from white cedar, planted and/or seeded scots pine. Hemlock are very few but this ELC typing is the closest match to the combination of remnant native trees and cultural trees like the Scots Pine.

Cultural Thickets CUT

The golf course design has retained elements of conifer throughout. These pockets are Scots Pine and some white Pine. Some grade into a mixture of white ash and black cherry with specimen Sugar Maple and Norway Maple trees, as well as remnant older Apple trees. Agrarian weeds are prevalent below these tree groupings and include Daisy Fleabane, New England Aster, Spotted Knapweed, Orange Hawkweed, Common Milkweed patches and Goldenrod. Some portions of the golf course edges also support Sumac Cultural Thicket elements (CUT1-1) that have succeeded at edges of rough.

Laneway to Golf Clubhouse

This is tree lined with sugar maple, basswood, white ash, black walnut and scots pine. Shrub layers include Elderberry, Red-osier Dogwood and Alternate-leaved Dogwood with Vitus, Chokecherry and Wild Lily of the Valley. *A potential Butternut was also noted, later confirmed to be hybrid.*

Pond Chain

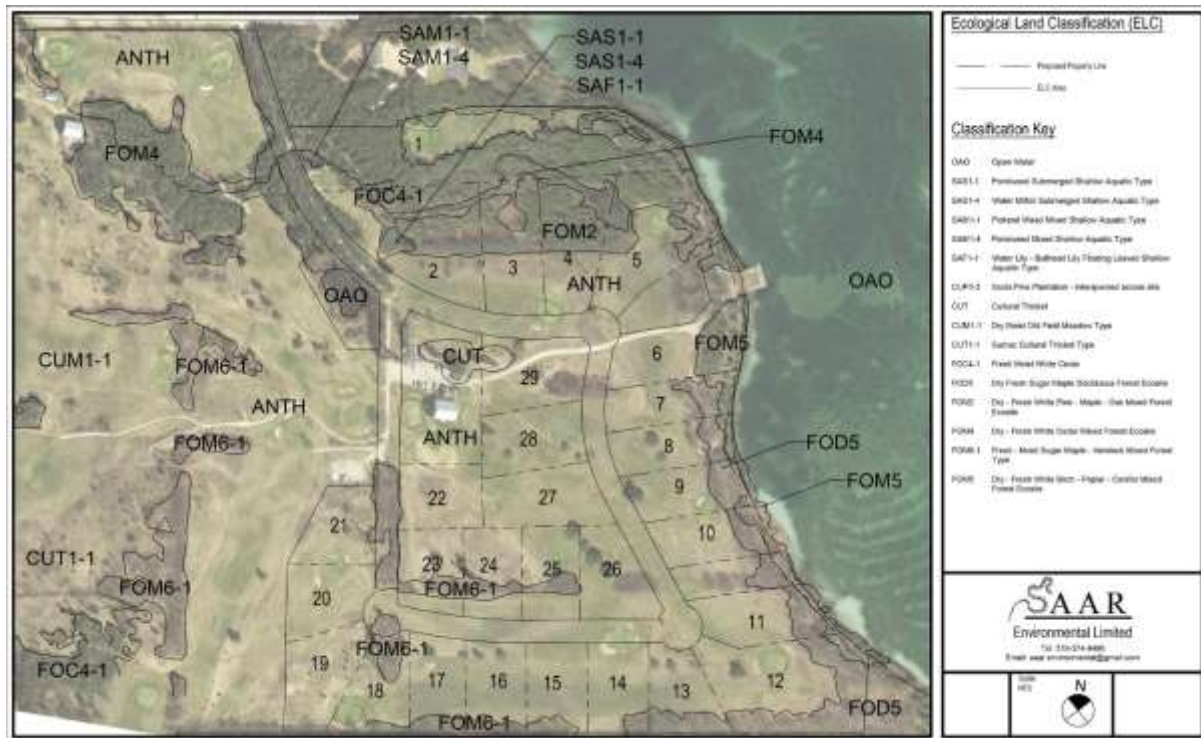
Pond (South) Mosaic of SAS1-1 Pondweed, SAS1-4 Water Milfoil, SAF1-1 Bulhead Lily Floating and Submergent Vegetation Communities

The open pond referred to as the south pond is ringed by Joe-pye-weed, Touch-me-nots, *Scirpus rubrotinctus*, *Leersia*, Marsh Fern and Shining Willow. The aquatics include floating Yellow Bull-head Lily, pondweed (*Potamogeton natans*) and Eurasian Milfoil submergent vegetation. Species support and biodiversity is high. In particular some rare dragon and damselfly species breed, emerge, feed and live in this tall vegetated border of the pond. They in turn are preyed upon by the adjacent bat community that resides in dead standing trees of the coniferous forest patch.

Pond (North) Dominant SAM1-1 Pickerel weed, with SAM1-4 Pondweed Emergent and Floating Vegetation Communities

A large colony of Ebony Jewelwing (*Calopteryx maculata*) damselflies with striking black velvet wings are supported at pond Y and use this pond with the westerly riparian creek zone to breed, feed and live. The Species of Concern Monarch butterfly uses pond Y but more so Pond X. The pond is flanked by Shining Willow, Tag Alder and wetland Water horehound, Boneset, Joe-pye-weed and Touch-me-not. The vegetation suggests early succession for this pond habitat although the drainage channel shows signs of long term permanence along the downstream rocky creekbank and toe of slope.

The pond is a fully vegetated Pickerelweed habitat which provides shade for the fish nursery. Hundreds of young of the year (YOY) Brook trout, with some Browns, were observed here.



5.6 BIRDS

Bird survey results are summarized in the Appendices with key findings in the EIA report. Conservation status species included the Bobolink, Veery, Ovenbird, Wood Thrush, Eastern Wood Pewee and adjacent land Barn Swallow. Subsequent lower level searches were conducted during the breeding season to confirm/negate the presence of any active nests for these species.

The only species with questionable findings was the Bobolink, as we did not locate a ground nest but did confirm presence of both male and female Bobolink in one west-central section of the site. As such, the precautionary principle of planning prevailed and we suggested a breeding timeslot restriction on removing lawn in that location during the month of June.

Barn Swallow Survey

Barn Swallows were observed in flight during all early morning bird chorus inspections. The barn would be a potential nesting habitat site if future livestock were sheltered, as manure piles and warmth of animals

can create suitable conditions for the swallows. Currently the barn is not operational. The barn and outbuildings were also inspected and no bats or barn swallows were found.



Figure 5: Drainage

5.7 WETLANDS AND DRAINAGE

Surfacewaters range from cold to cool water in character, some forested portions maintaining a coldwater fisheries environment of 18 Celcius in mid summer. Seepage zones are evident in the surfacewater creek features as well as in Wilder Lake. The riparian zone and pickerel weed pond supports coldwater salmonids with both Brook and Brown trout observed.

Anglers were informally surveyed while conducting littoral zone inspections of Wilder Lake and we observed the catch of the day to include Smallmouth Bass, Brown Bullhead, Yellow Perch and incidental catch of Pumpkinseed panfish.

The littoral zone of Wilder Lake and the outlet support a healthy community of odonata (dragon and damselflies) and the aquatic robust emergent vegetation such as Torey three square and Scirpus rubrotinctus should be retained for common to rare travelling odonates important to the fishery as a prey item in various life stages but also to foraging birds.



Figure 6: Catchment basin level photograph illustrating drainage pattern (SVCA Part Tile 471)

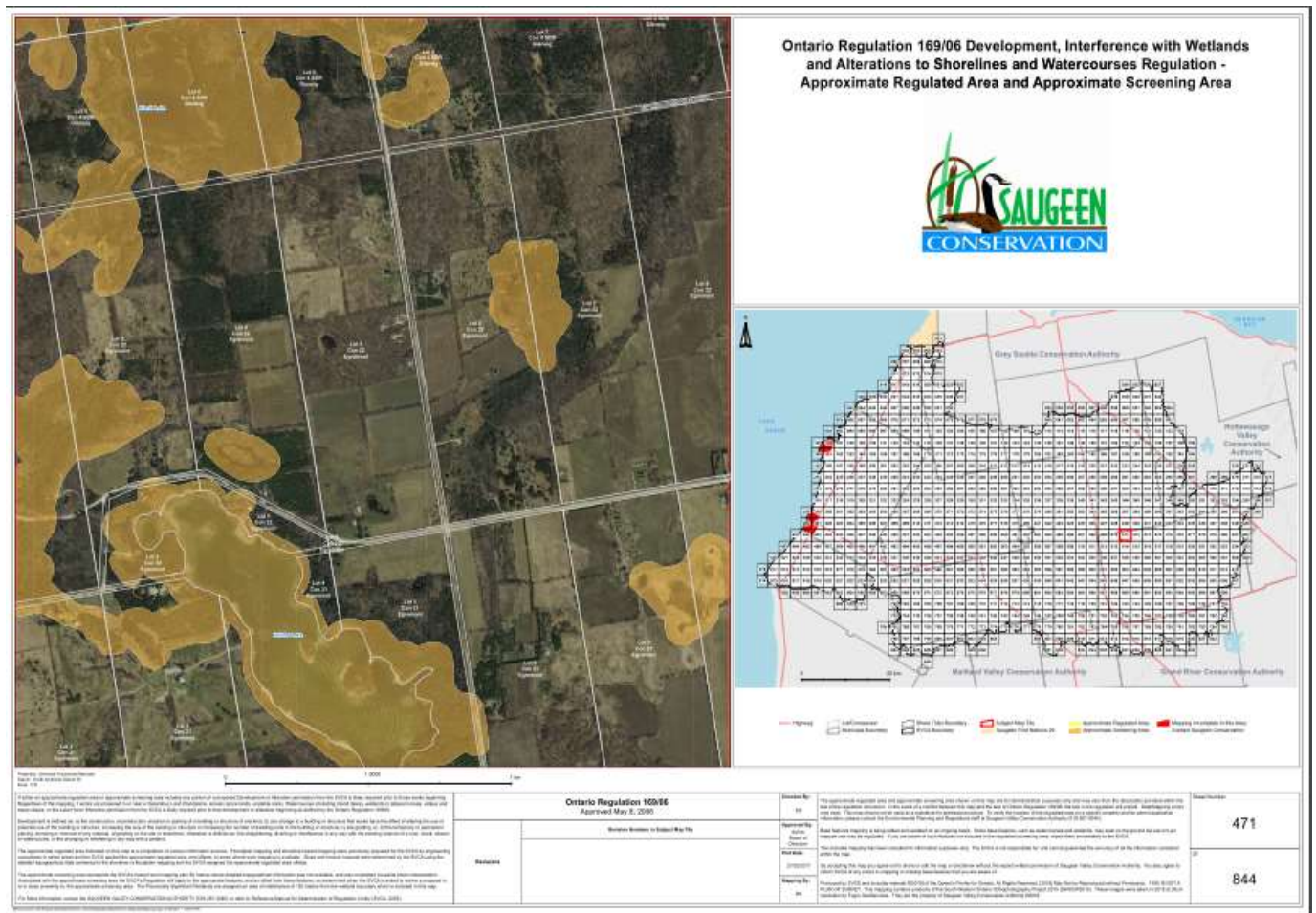


Figure 7: SVCA Approximate Ontario Regulation 169/06 regulated hazard land area

A permit was required from SVCA for the resort residential land use as some of the site fell within a regulated area. Liaison was undertaken by the proponent with SVCA for culvert installation, and a joint site inspection was held on October 9, 2018 where helpful natural heritage information was exchanged. The twin culverts were installed on November 12, 2018 (SVCA) under SVCA permit. This included a wet culvert for aquatic and semi-aquatic species passage, and a dry culvert for terrestrial wildlife passage.

6.0 NATURAL HERITAGE POLICY

Natural heritage policies under the Planning Act Provincial Policy Statement (PPS, 2014) are reviewed relative to site content as discussed with SVCA:

- *Fish Habitat;*
- *Habitats of Endangered and Threatened Species;*
- *Significant Areas of Natural and Scientific Interest (ANSI);*
- *Significant Wetlands;*
- *Significant Coastal Wetlands;*
- *Significant Wildlife Habitat;*
- *Significant Woodlands in Ecoregions 6E and 7E (excluding islands in Lake Huron and the St. Mary's River); and,*
- *Significant Valleylands in Ecoregions 6E and 7E (excluding islands in Lake Huron and the St. Mary's River).*

6.1 FISH HABITAT

The parcel supports fish habitat in connected ponds, protected by an Environmental Protection (EP) split zone approach (See Figure 6, Planning Report).

6.2 HABITAT OF ENDANGERED AND THREATENED SPECIES

Butternut

The site supports a young Butternut along the shore trail, not part of the proposed development. The specimen is dead standing but illustrated on Constraint Map Figure 10. A stem of potential Butternut was also located on the entrance lane. Key characteristics, such as brown pith, were shared on site, with later follow up of full characteristics (e.g. leaf scar hair arrangement and notching, lenticel stretch) confirming it was a hybrid.

Grassland Bird Foraging Area Maintenance

Foraging observed on and off a west portion of golf course lands, and adjacent fallow fields, can continue in the future (the golf course use will remain the same in that area). It can also be enhanced by following these recommendations, which are optional and not mandatory by statute given no nest:

- *timing windows for grass cutting*
- *provision of broader “rough”*

Grass cutting can accommodate this schedule by providing a broader area of rough than present day.

This can be flagged and/or staked on site with SAAR+SVCA if/as required at design and detail stage.

6.3 SIGNIFICANT AREAS OF NATURAL AND SCIENTIFIC INTEREST (ANSI)

An earth science ANSI is located south of the site. Figure 7 below illustrates the southerly Earth Science ANSI (Area of Natural and Scientific Interest) known as the Saugeen Kame Terraces at the southern parcel limits. These morainal kames are interesting depositional landform features that are not being disturbed for the proposed subdivision of land. Setbacks for grading have been invoked for the southern lot limit in this regard. If the proposal were to consider or require incursion into the geological landform feature, an assessment of regional representation (abundance, rarity) of this feature would be required for municipal review. There may be potential for shared access over time through exploring joint ventures with adjacent landowners for an eco trail providing signage including educational material on the ANSI.

- Habitats of species of conservation concern.

The site supports all of the above categories of significant wildlife habitat (SWH). SWH is, in places, located on immediately adjacent lands within 120m of the lot lines with respective setback distances established for conservation of the species or habitat that extend into this current parcel under land use application for subdivision. As such the features and functions have been identified, setback, and mitigated. Adjacent lands ecology meeting the SWH criteria in MNRF EcoRegion Guidelines is:

1. Forest interior breeding birds in the southern immediate off site woodland
2. Grassland bird foraging

The site supports potential, and confirmed SWH:

- Grassland bird foraging in NW field
- Fish nursery in pond chain with odonate support
- Bat foraging observed in north forest
- Snapping turtle feeding and migration along northeast pond chain

6.6 SIGNIFICANT WOODLANDS

Regional forest cover and forest cover within the watershed is considered healthy by the Province and SVCA (Watershed Report Card, 2018, municipal forest cover). At a site level, there are portions of forested lands that by virtue of their secondary ecological support functions, meet significant woodland value due to support of “Significant Wildlife Habitat”. SWH within portions of forest cover is detailed above in Section 6.5.

6.7 SIGNIFICANT VALLEYLANDS

The site does not support significant valleyland landform.

The 2014 provincial policy statement speaks to maintaining, restoring and where possible improving the connecting links between natural areas:

2.1.2 The diversity and connectivity of natural features in an area, and the long-term *ecological function* and biodiversity of *natural heritage systems*, should be maintained, restored or, where possible, improved, recognizing linkages between and among *natural heritage features and areas*, *surface water features* and *ground water features*.

The proposed estate residential draft plan application conforms to current policy through the recommended setbacks for natural heritage features and functions but also through an Enhancement Planting Plan to bolster wildlife movement across the site from one piece of the natural heritage system to another (the cores, corridors and links between them). This allows wildlife to move more safely across the landscape, screened from predators under a vegetated canopy sized to shelter specific species (from sedge shrub and tree layers). The key location for enhancement is the drainage system of the Wilder Lake inlet and associated pond system for conveyance along the riparian corridor for wildlife including the Species of Concern Snapping Turtle, amphibians, salamanders, odonates and avifauna.

Facilitating wildlife movement across this area includes installing a daylit culvert at the creek crossing. This can be in the form of an oversized culvert twice the volume of the current three foot culvert to facilitate travel by herptiles. Final design and detail for the crossing will be aided by discussion with reviewers. Airborne wildlife corridors across the site include avian species and insects such as the Monarch butterfly Species at Risk. Monarchs breed in open areas of the site, and also congregate in the fall to stage before migration. This site function for the Monarch feature will continue as the future uses include persistence of the golf course which provides the open area weedy and farm species edges for nectar and breeding; Common Milkweed, Beebalm, New England Aster, Joe-pye-weed, Boneset, Daisy Fleabane and others. Forest on and near the site will also remain to support their breeding activities which require some tree cover when the coupling pair of Monarchs fly into the forest edge and require tree branches.

Figure 10 below summarizes the constraints and enhancement planting areas based on wildlife survey findings and the impact assessment.



Figure 10: Refined in response to SVCA comments, in particular the expanded constraint zone on Lot 1 for the northerly pond fish and odonate nursery, linked enhancement plantings also meander the pond margin at Lot 1- 2.

NB: To hold Constraint Map numbering consistent with the original submission, note there is no Figure 9.

7.0 IMPACT ASSESSMENT

As part of an Environmental Impact Study, an impact assessment must be completed to determine the potential for negative impacts to significant natural features or their ecological functions on or within 120 m of the Site. In addition, suggestions for preventative, mitigative or remedial measures must also be provided. Environmental effects can be direct, where impacts are immediately incurred as a result of Site preparation or construction, such as vegetation removal, the loss of habitat, or erosion. Alternatively, environmental effects that are not immediately detected or occur adjacent to the development may be considered indirect impacts. Long term effects on surface drainage, introduction of invasive species, and increasing anthropogenic pressures from pets, noise, and light are just a few examples.

An example of a direct impact is would be the removal of Significant Wildlife Habitat. Examples of indirect impacts include invoking changes to moisture regimes that can alter vegetation communities.

Changes in surfacewater drainage over time can affect aquatic and semi-aquatic species trekking to water features for annual concentrated breeding. Anthropogenic effects, including colonization by invasive species and encroachment into the surrounding natural habitat, are more likely effects of residential uses however these changes to the landscape are already evident here in the prior farmed landscape.

The potential for direct loss of natural heritage has been limited initially by careful design and siting of the proposed 29 lots in existing clearings. *Use has been directed to lands already in use as a golf course recreational destination. Thus, many of the potential effects of residential use are already on site; e.g. weedy and invasive flora, noise and light effects.* A subdivision can bring losses of birds through domestic pet hunting, and added light impact on night wildlife (crepuscular and nocturnal) such as the owls, salamanders and others. *Specific examples include Barn Swallows which were observed on and adjacent to the Homestead parcel. We assessed the potential impact as summarized below.*

7.1 BARN SWALLOW

Birds glean insects such as flies, beetles, bugs, bees, wasps and flying ants from the air usually within 600m of their nests, often 10m from open areas, lower in cold weather over water features where warmer water supports more flying insects (COSEWIC, 2011 in: Ontario Recovery Strategy Series, 2014). The

Barn Swallow has been designated as threatened in Canada by COSEWIC (Committee on the Status of Endangered Wildlife in Canada). The swallows defend a small territory around 8 square metres from nest or less, which makes sense given their colonial nesting habit where nests are often placed close to each other. Young fledge after 19-24 days and the adults can have a later second brood.

The Ontario Recovery Strategy recommends that until key knowledge gaps are addressed, habitat for Barn Swallow in Ontario be defined narrowly as follows:

1. Nests (including unused nests) on natural or human-created nest sites during the current breeding season (between May 1 and August 31) plus the area within 1.5 m of the nest and the openings the birds use to access nests in enclosed situations;
2. All used nests at any nest site that has been occupied by Barn Swallows within the previous three breeding seasons (Ontario Recovery Strategy Series, 2014).

The estate residential land use being proposed would not change the current use of the barn structure for tools and not live animals. IF future uses changed to include livestock or pleasure horses for instance to be used by future residents of the subdivision then it is likely that colonization by Barn and or Cliff Swallows would then occur, due to the introduction of horse manure and the key foodstuff of flies for the bird.

This use would of course be in conformity with all lower and upper tier environmental policy goals as it brings a listed conservation species onto the site for long term conservation and viewing pleasure.

IF the barn and/or associated outbuildings are later scheduled for demolition, additional follow up Barn Swallow surveys would be mandated to confirm presence or absence of nests as vegetation can change over time. There is no construction proposed on or adjacent to this area. The modified management area of 500 metres measured from their observed flights does fall within the top northeast area of the study site, as illustrated below, however no special mitigation is reasonably foreseen as the current land use of golfing continues there.

All potential structures on site that could house the rare bird were inspected and no active or abandoned nest structures were found (*See Photo Diary, Appendices*).

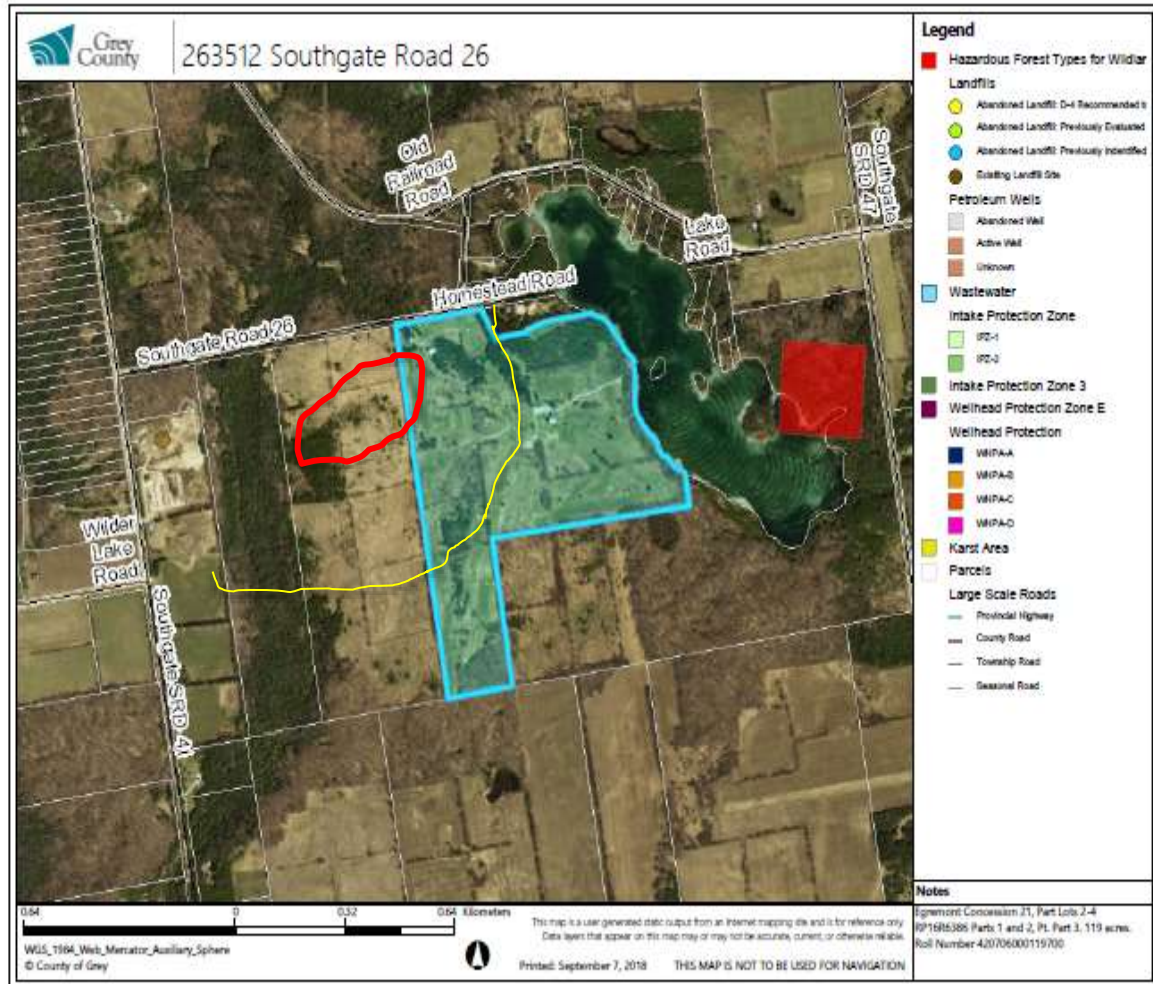


Figure 11: Area of Barn Swallow flights in red, with 500m offset shown in yellow.

7.2 BOBOLINK

The NW Bobolink area of activity should be provided with a breeding timeslot restriction on manicuring the grass height during June. There was no nest activity in May and June of 2018 but numerous (4) sightings of male and female Bobolink.

Provincial management prescriptions for the habitat of Bobolink are illustrated below.

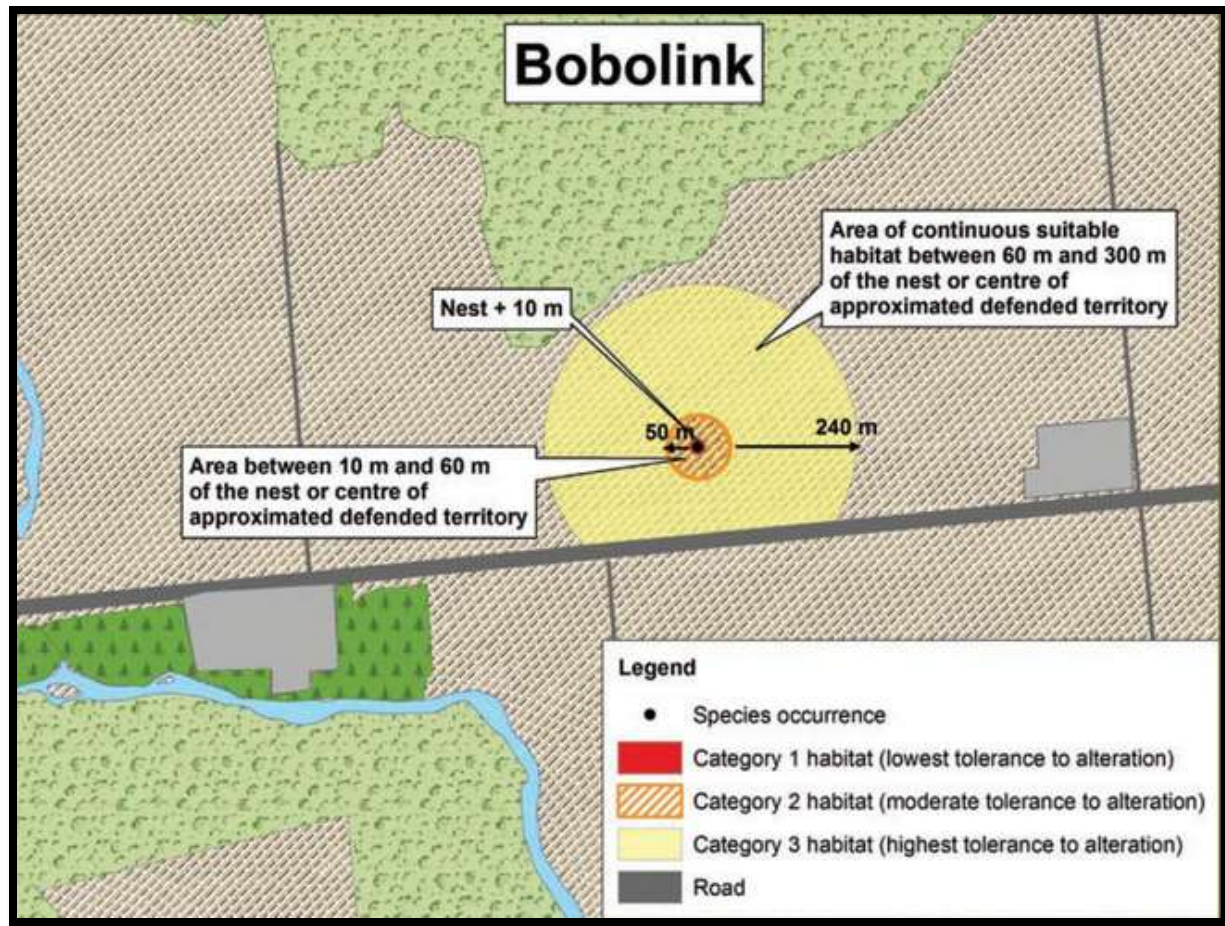


Figure 12: MNRF General Habitat for Bobolink Conservation Prescription Example

Please note the above is mandated for nest locations and confirmed breeding, whereas the Bobolink we observed was foraging, on and off the parcel. SAAR recommendations are not mandatory. There is no proposed change in land use at this west quadrat. Lands will remain in golf course operation as they are present day.

The foraging grounds can be enhanced, where possible, by broadening the area of “rough” presently available in the vicinity noted on Figure 9. This can be flagged/staked on site at later design and detail stages with SAAR+SVCA if/as required.

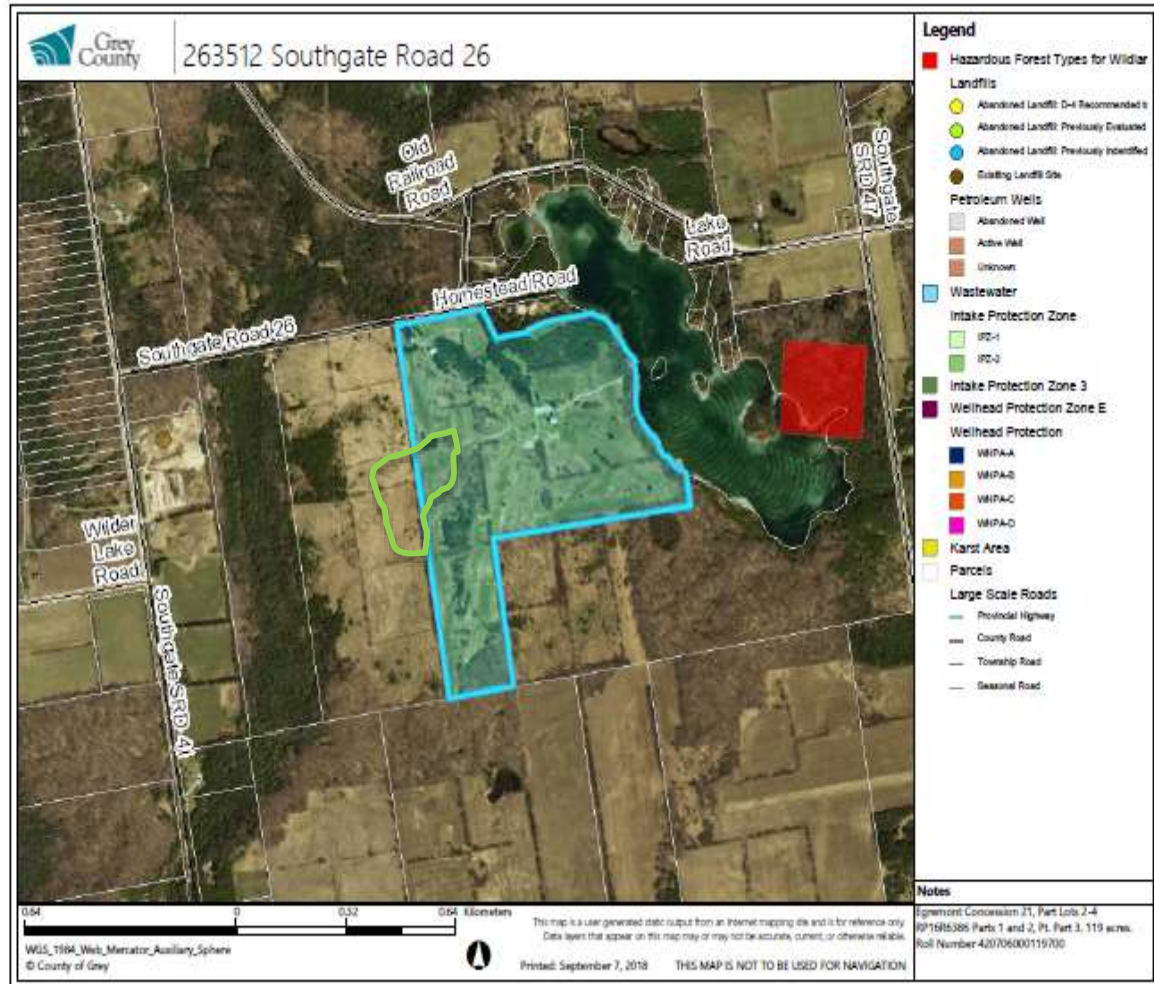


Figure 13: Green area of peak Bobolink activity noted in May and June 2018

Note that Bobolink were also observed during roadside and broader reconnaissance on adjacent farmlands as well as the Barn Swallows discussed below.

7.3 STORMWATER

Subdivision land use can increase overland input of rain events due to the creation of impervious surfaces which include a paved subdivision road layout, driveways and rooftops. The direction of storm water, pre and post, has been reviewed, as well as the proposed location to route storm events in the post construction

environment. Generally the pattern of surface water drainage pre development mimics the post development plan, with additional flow being directed into a prior depression of land that had supported a historical rail line parallel to the Wilder Lake shore.

The swale conducts peak events presently. Spring inspections for herpetofaunal events confirmed no amphibian or salamander breeding pools; wetted channel time was brief and insufficient to sustain standing water for incubation of amphibian or salamander eggs. Suitable vegetation including some robust emergent *Scirpus cyperinus* which would be species that SAAR would recommend installing if it was a denuded toe of slope, for nutrient attenuation.

The 2019 SAAR and GMBLuePlan site inspections helped inform the final stormwater management pond areas, types of enhancement treatment, and the detail for the enhancement treatment train. Our final review of the 2019 GMBLuePlan report confirms that:

- The 20.8ha part of Wilder Lake Resort and Golf Course will be developed into a 29 lot subdivision in two phases. By the end of Phase 1, all the storm quality and quantity controls will be in place. These include two infiltration ponds, one wet pond with five enhanced grass swales.
- Total post development peak flows discharging from the subdivision lands to each of the four outlets selected would be attenuated to less than or equal to the total existing pre subdivision condition peak flow rates
- Enhanced levels of water quality treatment with eighty percent total suspended solids removal are being provided for the storm runoff draining from the subdivision before discharge off site
- The 29 lot subdivision will have two infiltration ponds, one wet pond with five enhanced grass swale roadside ditches to collectively provide storm quality and quantity control for the site

Given the proximity to a relatively shallow lake known as Wilder Lake, the fact that the site benefits from naturally permeable sandy gravel soils with good attenuation properties, and that the full suite of stormwater quantity and quality controls will be in place by the end of the first phase of development, bodes well for the environmental health of Wilder Lake from a nutrient perspective.

7.4 SIGNIFICANT WOODLAND ANALYSIS

General habitat guidelines provided by the Federal reporting include maintaining diversity of forest type and ages to provide a range of roost and nursery sites, and to maintain the integrity of aquatic and shoreline habitat. We reflect this mitigation through design opportunity on this site because the subdivision can be built on existing disturbed golf course area not foraged by bats.

Forest cover of Lot 1 is maximized by directing the future driveway location to an existing area of tree removal along a cart trail; this is iterated in the subdivision agreement conditions and on the GMBLuePlan drawings.

Note that SAAR recommended the existing cart trail for future driveway to reduce the amount of trees to be removed; the entry of the cart trail from the roadway (approximately 10m) can be shifted north 5m to maximize the setback further from the north pond at a pinch point. This can be flagged/staked on site with SAAR+SVCA if/as required at lower level design and detail stages of the subdivision.

Key foraging habitat along the pond system and the shoreland of Wilder Lake is identified further to our field surveys for constraint. Mitigation includes a limit on the 'viewslot' for tree limbing/clearing at Wilder Lake shore to attain views of the lake.

Southerly forest that meets the southern lot limits supports conservation status forest interior nesting birds including the Ovenbird, Wood Thrush, Veery and Eastern Wood Pewee. Their development setbacks fall onto the subject property area of active golf course. The golf course land use would continue in the post construction subdivision environment, thus no tree clearing, night lighting or persistence of humans in a daily residential sense will take place along this forested edge, protecting the birds further from impacts such as domestic cats preying on ground nesting forest birds (e.g. the Ovenbird).

We have reviewed the life cycle requirements of currently listed conservation status birds documented by our team here, the Eastern Wood Pewee and Wood Thrush, and concluded that mitigation including separation distance from the southerly forest can maintain the Species of Concern interior forest nesting bird in the post construction environment. The Eastern Wood Pewee, in particular, was researched regarding the flexibility of this birds forest use relative to forest openings as we noted the bird calling in a number of adjacent southerly forest lands locations.

7.5 EASTERN WOOD PEWEE (EWPW)

SAAR recorded the male EWPW during early morning bird chorus with 120m adjacent lands in the southern forest close to natural forest openings beside the golf course. It is considered a “Species of Special Concern” by the Committee on the Status of Endangered Wildlife in Canada (COSEWIC) as it did not meet criteria for population decline to raise status to Threatened; for instance the EWPW does not have a small restricted total population (See below range). NatureServe ranked the EWPW as ‘globally secure’ (G5) and the IUCN Red List respectively ‘Least concern’.

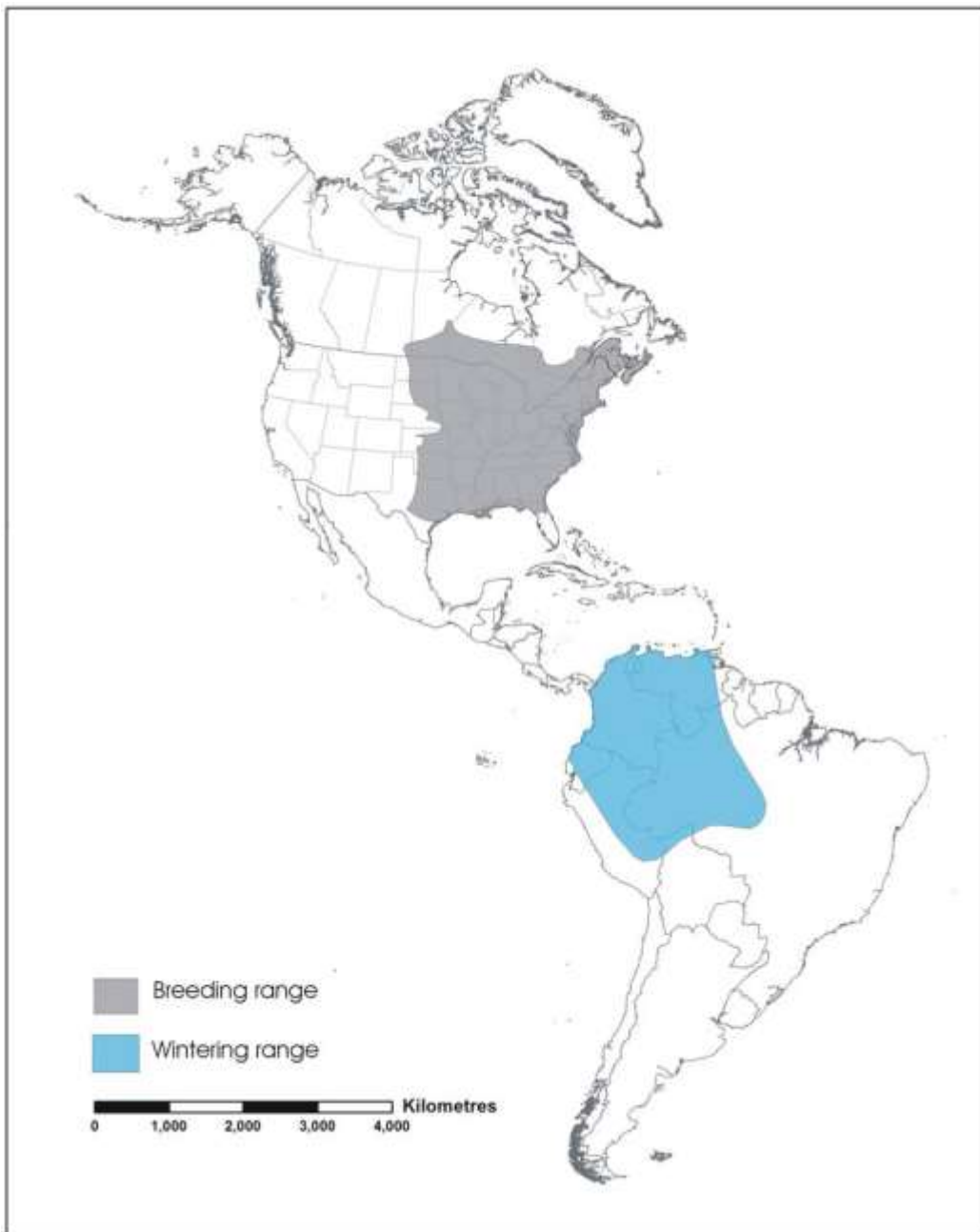


Figure 14: Range of the Eastern Wood Pewee (COSEWIC 2012).

COSEWIC describe the Eastern Wood Pewee (EWPW) as a most common and widespread songbird of North American eastern forests, resilient to many kinds of habitat change similar to other birds that forage on flying insects; a mobile food source.

The EWPW decline is not understood but COSEWIC noted it may be linked to loss or degradation of wintering habitat in South America (COSEWIC, 2012). COSEWIC notes the EWPW occupies the mid canopy at forest clearings and edges of hardwoods in summer more than mixed forests where canopy layers are absent or sparse. The adjacent southerly forest beyond the golf course clearings does support healthy deciduous tree species that the bird can use, evidenced by the singing males we recorded. This bird colonizes new habitats in spring – is not site tenacious or true to prior year nest sites – and arrives in late May advertising through bird song and behavior to attract a mate. Interestingly, forest trails have been studied to have a sheltering effect from the bird predators of edges that prey on the EWPW.

Potential effects on EWPW can be:

- Consistent loud noise or excess forest cover could affect the ability of the male EWPW to be heard singing or seen, potentially affecting securing a mate, courting and breeding. This would again be true later if the pair or different pair attempted a second brood
- Removing or degrading surfacewater input to wetlands such that wetland hydro-period mimicked drought conditions; this would affect insect clutches produced off the wet land and limit one part of their food base. Other insects COSEWIC reports the bird is known to hawk from the air include species from *Diptera*, *Homoptera*, *Lepidoptera*, *Hymenoptera*, *Coleoptera*, *Orthoptera*, *Plecoptera* and *Ephemeroptera*
- Removing substantial amounts of mixed forest with no shrub canopy layers and some forest openings; one field study in southern Ontario noted territories for the bird averaged 1.76ha +- 0.24ha for 26 pairs in deciduous forest, and 27 pair in pine plantation (Falconer, 2010)
- Clearing some forest increases the existing forest edge effects. The EWPW is not prone to predation from the edge invaders such as the Brown-headed Cowbird and this potential effect is not a substantial risk for this insectivore; i.e. it is breeding in natural openings within the forest that exert edge effects and support observed predators already; Raccoon, American Crow, Red Squirrel, American Blue Jay, Brown-headed Cowbird.

No clearing of forest is proposed for the deciduous patch or hedgerows leading to it.

7.5.1 EWPW MITIGATION

- In Canada, EWPW nests and eggs are protected under the *Migratory Birds Convention Act*. A biologist must inspect the site before construction to confirm presence/absence of an active nest, a standard BMP
- COSEWIC research summaries also recommend selection cuts to create small openings in forest canopy. This is intuitive since openings and linear openings in particular offer insects a flight path, and their predators, be they birds or bats, a runway to capture them. Natural openings are present and can be increased to balance the ecology of forest, forest edge, open meadow species such as the Bobolink

SAAR reviewed thesis material that contemplated quite well the conundrum of increased humans in and at forest edges for these forest birds. The study finds dispersing into woodlands isn't always linked to nest survival or fecundity. Red-eyed Vireo nested close to and away from trails surveyed, with many nests parasitized by Brown-headed Cowbirds closest to trails with reduced numbers of young produced in those locations, with productivity improving by 65m distances from wide trails.

The sample size of two potential forest nests against potential of dispersal into the larger forest is not considered a significant negative impact but rather a potential effect. The Eastern Wood Pewee was observed near natural forest openings within 120m of the golf course greens. The level of residential development and large lot adjacent to this habitat is not expected to negatively impact on future nest success of the EWPW in the forest *since the majority of building envelopes can be situated in openings*.

7.6 NATURAL HERITAGE SYSTEM MITIGATION

- Invoke a 50m setback with no night lighting adjacent to the southern off site forest patch for the golf course portion of the lands; to maintain forest supported interior birds including Veery, Ovenbird, Wood Thrush and the Eastern Wood Pewee documented during our early morning bird song surveys
- Invoke split zones (residential and environmental protection) for northern lots 1-4 adjacent to the creek and pond system
- West central area identified for rare grassland bird foraging should be avoided with grass cutting to take place outside of the May-June peak activity period for this bird
- Travel from the pond system along the riparian creek should be enhanced by providing two culverts; one for aquatic species passage, and one above grade for terrestrial wildlife
- Maintain night sky conditions for wildlife in the off site southern forest by restricting the type of night lighting for lots 15-18 near the southerly off site forest

- Coldwater Brook and Brown Trout nursing habitat in the northerly pickerel weed pond requiring setbacks from nutrient application, restriction on night lighting and barriers to separate winter road de icing (salt, sand) from entry into the watercourse at the creek crossing
- Enhance bat foraging and potential roost habitat adjacent to northeast conifer forest (lot 1) by maintaining deadstanding trees, restricting night lighting, erecting bat boxes and planting White within tree cover for future softwood roost tree value
- Generally 30m setbacks from surfacewater features and associated wetlands reflected by split zoning on the subdivision plan, marked on the ground by a living fence. Note some areas, such as Lot 1, use a cart trail for future driveway to reduce tree removal, and this falls within setbacks
- Local wetland plantings within open portions of any water feature

Two tiered mitigation can be implemented for lighting at the subdivision for bats and other species.

Firstly, general subdivision lighting can be limited to downward directed hooded lights which limit light pollution at the forest edge. Second, the lower level tier of mitigation targeting disturbance of vehicle headlights for cars entering driveways has been considered. Lots fronting onto identified bat foraging forest edges (lots 1-5, 12B, 14-18) mitigation recommends orienting driveways at right angles to the forest edge; similar to positioning culvert crossing of creeks at right angles to creeks to limit lengths of disturbance; this limits the swath of light disturbance to driveway and garage entry vs. panning the forest edge.

Stationary lights around garages for instance, will initially attract insects, and thus foraging bats like the Little Brown Myotis hawking the insects from the air, but this benefit can be short lived, akin to 'fishing out' a lake as lights continue to attract more insects. Northern Myotis fly slower within forest cover and not likely foragers near a light source requiring nimble flight (Naughton 2012). The 2015 federal guideline noted the lack of research on the topic of light pollution for insects and bats and called for further study in the future. Thus our overall response mitigation discourages bright night lighting, recommends hooded light fixtures to direct required safety light downward. In this manner the night sky can be maintained for other nocturnal and crepuscular forest wildlife as well as bats.

- IF the April 1-August 15 timing window for breeding birds cannot be achieved during construction schedules, the proponent requires a biologist on site at least three days before heavy machinery to ensure no destruction of bird nests or young in compliance with the Migratory Bird and Game Act
- Timing window of May-June to restrict heavy equipment noise at the pond chain *
- Timing window for adjacent southerly forest Eastern Wood Pewee May-June, hole 12
- Maintain dead standing softwoods throughout forest patches for bat roosts
- Restrict outdoor lighting to downward directed hooded lights to minimize light pollution and disruption of nocturnal and crepuscular wildlife
- Limit shoreline tree clearing to hazard trees and establishing “viewslots” by openings in the forest vs. tree removal (opening maximums typically 8m width X 2m height)
 - Pond chain functions are diverse and include species support (dragon and damselflies, avifauna) and significant wildlife habitat (nursing area for trout, breeding amphibians and Snapping Turtle)

Seasonal concentrations of animals were documented on and 120m from site including:

- Forest breeding birds including Eastern Wood Pewee, Wood Thrush, Veery, Ovenbird
- Grassland bird foraging, for Bobolink and Vesper Sparrow
- Amphibian breeding events in the wetland, predominantly abundant Spring Peeper*

To clarify the location of the above seasonal concentrations on and off the site, we confirm that forest breeders such as the Pewee, Veery, Ovenbird and Wood Thrush were calling in the south forest off site, but adjacent to the site. Their SWH 50m zone of concern extends into the site. Grassland birds including Bobolink and Vesper Sparrow were observed in July on site, on the west portion of the subject property. Breeding evidence via a ground nest was not observed.

7.7 ENHANCEMENT

Wildlife corridor gaps in the hedgerow for small mammals, herptiles and birds can be strengthened through enhancement plantings. With enhancement plantings the potential for positive impact is likely, bolstering the width of wildlife corridor hedgerows and habitat for Species of Concern such as the observed Monarch Butterfly. Plantings can be installed after the construction phase. Butterfly nectaring forbs include Joe-pye-weed, Beebalm, New England Aster and Common or Swamp Milkweed to bolster the biodiversity of Monarch as well as other butterfly species. Other species that can conceivably benefit from wider hedgerow features on the site include herptiles after they congregate in the wetland to breed, and Wild Turkey observed in the ANSI and north hedgerow.

Shrub Species for cover and forage at 50 stems per species:

Wild Raisin

Serviceberry

Elderberry

Blackberry

Wildlife movement across the site and in particular between Wilder Lake and pond chains is bolstered at edges by broadcasting seed mix from the Co-op for butterflies on the site including the Monarch. A 10 kg bag of the following seeds is recommended:

Beebalm

Joe-pye-weed

New England Aster

Common Milkweed IF not immediately adjacent to continued farming practices as it is considered a noxious weed under the Noxious Weed Act due to ill effects on grazing cattle.



Figure 15: Environmental Constraint Area Approximate Setbacks (Red)

NB: See Figure 10 Constraint Map which incorporates refined constraint limits for Lot 1, and plantings for the north pond linked through Lot 1 and 2 in response to SVCA communication.

The observed area of Bobolink foraging is outlined by a red circle, and is not affected by proposed locations of development, nor the timing of heavy machinery during construction of the internal road and the phasing of each lot; partially due to the healthy separation distance for noise, dust, and human presence. The birds are presently conditioned to remnant farm activities and the presence of golfers, that will continue for the foreseeable future. Candidate areas for enhancement plantings include riparian limits of the Camp Creek tributary and the associated pond chain on the north portion of the parcel.

Species to benefit from the enhancement plantings include butterflies, odonates, moths for nectar plants, and small to large mammals including avifauna for shrub strengthening of the overland wildlife corridors. A safe travel route can be planted at a shrub level from golf course hole # 12 to the forest edge as it in

particular offers optimal habitat for Snapping turtle nesting. The exposed sandy banks there did not offer evidence of recent failed nest attempts this is an area within travel distance of the ponds for this turtle to breed.

7.8 SIGNIFICANT WILDLIFE BENEFITTING FROM SIGNAGE AND/OR PLANTING

7.8.1 EASTERN WOOD PEWEE

The Eastern Wood Pewee is listed as a COSEWIC species of special concern. This bird is breeding in the off site southern deciduous forest. The provincial 50m setbacks recommended in the Significant Wildlife Habitat Guideline for Eco Regions do fall onto the study site in some instances and are provided with a timing window to limit tree heavy machinery between May and June.

7.8.2 VEERY

Veery prefer habitat with running water, moist substrate, and high understory cover (Bertin, 1977). Mitigation is as above.

7.8.3 SNAPPING TURTLE

The Snapping Turtle is listed as a Schedule 1 COSEWIC and SARA species of special concern. Snapping Turtles are relatively long-lived animals whose life may exceed 47yrs (Congdon et al., 1987). Snapping Turtle nests are usually within 183m of the nearest permanent aquatic habitat, with nesting season beginning late May or early June (Congdon et al., 1987). Hatchlings emerge from the nest from late August to early October (Congdon et al., 1987).

This species makes use of the littoral zone of Wilder Lake and the pond chain. Enhancement plantings on terrestrial portions of the drainage system here can assist in sheltered travel if this or other turtle species traverse the lands in the future in tandem with the shoreland drainage ditch.

Golf course hole # 12 exposed banks should be retained long term as they offer optimal turtle nest habitat. There was no evidence of failed nests but this is an area within travel distance of the ponds for this turtle to breed.

7.8.4 FOREST COVER VALUES

7.8.4.1 BATS



Figure 1. Approximate distribution of Little Brown Myotis and white-nose syndrome (WNS), as of May 2015 (Naughton 2012, COSEWIC 2013, Wilson et al. 2014, CWHC 2015, GNWT 2015a). Some records in Northwest Territories and Nunavut (as shown with a '?') indicate uncertainty in the northern limit of the range. The black dot represents an extralimital record. The WNS polygon (black diagonal) encompasses locations of confirmed *Pseudogymnoascus destructans* presence and where clinical WNS characteristics have been observed.

The federal short-term (12-18 years) objective for both Little Brown Myotis and Northern Myotis populations is to maintain and where feasible increase the population compared to 2015 levels for a self-sustaining, resilient, and redundant population. In not yet affected by WNS, the population objective is to maintain (and where feasible increase) the population compared to its current level.

The below illustration confirms that the study site does not fall within identified critical habitat, but is still suggested to meet population objectives of maintaining or increasing bat levels. Thus we recommend installing bat boxes and provide one option for bat box design in appendices.

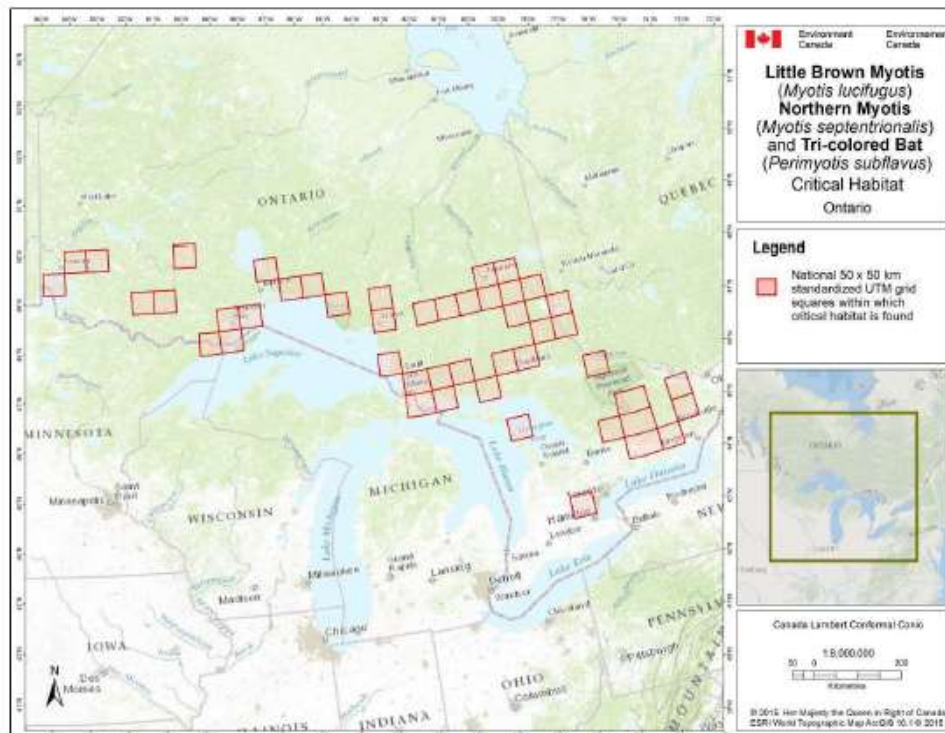


Figure 15. Grid square that contains critical habitat for Little Brown Myotis (*Myotis lucifugus*), Northern Myotis (*Myotis septentrionalis*), and Tri-colored Bat (*Perimyotis subflavus*) in Ontario. Critical habitat for these species occurs within these 50 x 50 km standardized UTM grid squares where the description of critical habitat is met (i.e., hibernacula have been identified). This standardized national grid system indicates the general geographic area containing critical habitat; detailed critical habitat mapping is not shown. Standardized UTM grid squares at the intersection of UTM zones are merged with their adjacent grid squares.

Roost selection is a function of numerous characteristics occurring at a range of spatial scales (Fabianek et al. 2011) including tree species, diameter, height, decay, cavity, sun aspect and other factors (Garroway and Broders 2008, Slough 2009, Poissant et al. 2010, Olson and Barclay 2013). Roost selection may be dependent also on canopy gaps, tree density, water source, etc. (Kalcounis-Rüppell et al. 2005, Garroway and Broders 2008, Henderson and Broders 2008).

At the landscape scale the age of the forest, composition and amount of fragmentation can be operating factors (Henderson and Broders 2008, Fabianek et al. 2011) and as bats also use treed habitat in urban cores, factors like man made structures may be valued by bats such as attics for the Little Brown Myotis roosts. SAAR reviewed the biology of the species relative to proposed site alteration to assess potential impact. Female bats generally give birth and raise pups in a maternity colony during the spring and summer. Roosts can be abandoned and different roosts may serve different needs in a growing season. Lactating females can consume their body weight in insects (Anthony and Kunz 1977), with peak foraging before sunrise and after dusk (Fenton 1970). Foraging Little Brown Myotis are most often associated with open habitats, such as ponds and roads and open canopy (0-50%) forests (Segers and Broders 2014), but have also been recorded gleaning prey within forests (Ratcliffe and Dawson 2003, Jung et al. 2014) and using vegetation along lake and stream margins (Fenton and Barclay 1980). Little Brown Myotis in Yukon boreal habitat travelled 3.8 ± 0.7 km from their daytime roosts to foraging areas, with females travelling significantly farther than males (Randall et al. 2014). In Quebec, lactating females had home ranges 42% smaller (mean: 17.6 ha) than pregnant females (mean: 30.1 ha) (Henry et al. 2002).

This is in line with what we observed on site, where Big Myotis foraged along forest and pond edges.

Northern Myotis roost singly or in small groups and favour tree roosts (under raised bark and in tree cavities and crevices), but they can also be found in anthropogenic structures (e.g., under shingles) (Sasse and Perkins 1996, Foster and Kurta 1999, Caceres and Barclay 2000, Carter and Feldhamer 2005). Northern Myotis' maternity roosts are strongly associated with forest cover, streams, and tree characteristics (e.g., species, height, diameter, age, and decay) (Caceres and Barclay 2000, Broders and Forbes 2004, Broders et al. 2006). Females prefer to roost in tall, large diameter trees in early- to mid-stages of decay (Sasse and Perkins 1996, Caceres and Barclay 2000, Silvis et al. 2015a). Males generally roost alone under raised bark or within cavities of trees in mid-stages of decay (Broders and Forbes 2004) feeding on moths, beetles, wasps, flies and spiders (Lacki et al. 2009, Dodd et al. 2012, Thomas et al. 2012) that are primarily terrestrial (Broders et al. 2014). This differs from Little Brown and Big Myotis which we observe to feed over water and open edges, gleaning insects by hawking from the sky on wing. Northern Myotis forage more frequently along and within forests on flying insects but also other (Caceres and Barclay 2000, Ratcliffe and Dawson

2003). A West Virginia field site recorded the Northern Myotis feeding along road corridors in 70-90 year old forests, and the average home range for female Northern Myotis there was 65 ha (Owen et al, 2003 in Federal Government, 2015).

Although potential in the off site southern mixed forest we did not observe the Northern Myotis. SAAR has documented this bat species in Silver Maple swamp extensive older hardwoods elsewhere in southern Ontario, and that habitat type was not presented on or adjacent to this study site.

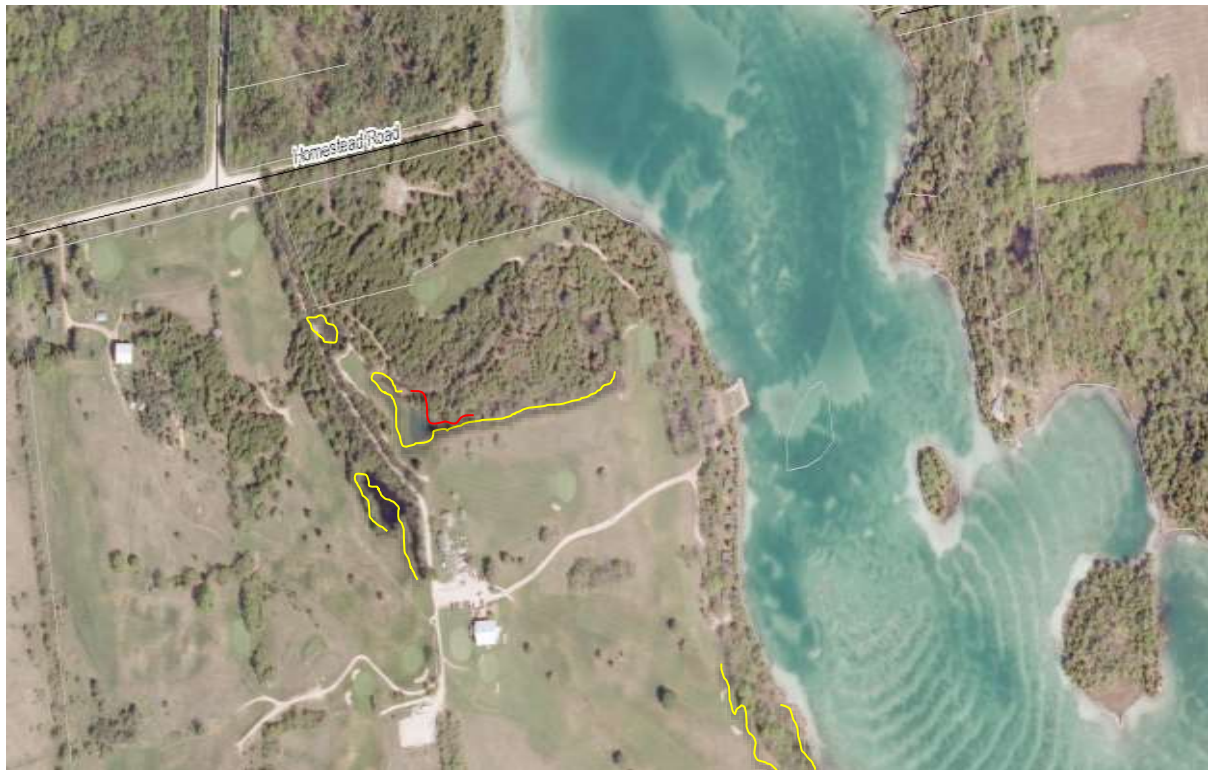


Figure 16: Dusk and Pre Dawn Peak Foraging Activity Areas for Big Brown Bat

We did observe the Big Myotis on and adjacent to the site. Foraging areas are noted on Figure 14 in yellow and they often overlap with the nearby water feature insect food sources. The red line indicates an area of higher concentration observed with night vision binoculars. Risk factors identified by the Federal Government guideline include intentional harm, recreational or scientific disturbance, industrial disturbance (mining, forestry), toxic pollution (e.g. mercury), light pollution and climate change causing habitat or prey dynamic changes.

Development would not introduce industrial level disturbance, toxic pollution or scientific disturbance, nor is climate change under individual development application control; habitat used by bats however, can be, and is, recommended for retention over the long term for this development. There will be a level of recreational and light pollution risk however this can be mitigated as detailed further.

Bats in small part are subject to occasional incidental catch by predators including feral and domestic cats. For the Homestead parcel this is projected to be a low level risk since the barn structures are not active (no barn cats), and a proportion of future homeowners may have domestic pets. Maintaining cats on property can be stressed in homeowner manuals specific to the local natural heritage elements. Future uses of the barn will not include livestock and horses that would have necessitated barn cats for rodent control. Thus no cats are planned for the barn structure on site and no mitigation is required.

Tree clearing can reduce reproductive success for bats, reduce their home range size, alter the average size of colony and decrease site fidelity (Brigham and Fenton 1986, Neilson and Fenton 1994, Borkin et al. 2011, Chaverri and Kunz 2011). Little Brown Myotis may abandon roosts after being excluded from an area (Neilson and Fenton 1994). Bats may use another tree for roosting if a previous roost tree is removed outside the breeding season (Silvis et al. 2015b). For Northern Myotis roosting in Kentucky, the number of roosts, roost site characteristics, and overall space used did not change after single highly-used roosts and 24% of secondary roosts were experimentally removed prior to roosting (Silvis et al. 2015b). However, the distances bats moved between sequential roosts doubled within areas where secondary roosts were removed (Silvis et al. 2015b). Nevertheless, Silvis et al. (2015b) noted that tolerance limits of roost loss may be influenced by local forest conditions and the social / behavioral characteristics of the species using the roost.

Harvest rates associated with forestry practices are highest in Quebec, British Columbia, and Ontario. Rates were relatively stable in Canada from the 1980s to 2008 (Masek et al. 2011), but have declined since 2008 (NFD 2014). Habitat loss and change also includes wetland loss; approximately 70% within settled areas, with draining for agriculture accounting for the majority (85%) of habitat conversion (Haak 2008). Bats seem to avoid large clear cuts (Henderson and Broders 2008), but use the forest edge (Krusic et al. 1996, Grindal and Brigham 1998). Forest edges can shelter bats from predators and from wind, and also concentrate flying insects to prey upon (Swystun et al. 2001, Henderson and Broders 2008). Little Brown Myotis, Northern Myotis, and Tri-colored Bat are all associated with forests or trees for at least some portion of their annual cycles so could all be affected by forest fragmentation, degradation and loss depending on their association with insect prey and other factors (Grindal and Brigham 1999, Swystun et al. 2001, Henderson et al. 2008, Ethier and Fahrig 2011, Segers and Broders 2014, Pauli et al. 2015). Tree clearing

that shapes a narrow forest edge can benefit some of the bat species that feed on insects along these edges, but reduce habitat of Northern Myotis (Broders and Forbes 2004, Broders et al. 2006, Segers and Broders 2014). Wetlands and areas around waterbodies (e.g., riparian areas and forest edges) are important foraging habitat for Little Brown Myotis, Northern Myotis and Tri-colored Bat. Activities that degrade or remove wetlands have the potential to have negative impacts to foraging habitat availability and quality. Wetland loss in southern Ontario, where all three species occur, has been extensive and continues (additional losses of 3.5% between 1982 and 2002) (Federal Provincial and Territorial Governments of Canada 2015 SARA Report). Roads can act as barriers to bats by the change in habitat (Abbott et al. 2012, Bennett and Zurcher 2013, Kitzes and Merenlender 2014, Abbott et al. 2015) as bats are less likely to fly across a road with vehicular traffic activity and noise (Bennett and Zurcher 2013). Traffic noise may also impact flight and foraging by disturbing echolocation and hearing (Abbott et al. 2015). The site is predominantly an existing golf course with a road and trail system that has been in use for decades. The risk to bats through habitat change is met by constraining the valued forest patches, and the risk of vehicle noise – related to vehicle density – is constrained by the low number of cars (29) driving at different times, to different lots, across the open meadow habitat. The chance of overlapping activity is the early morning and early evening (pre dawn, pre dusk) time when bats forage along tree and water, or tree and meadow edge, and can be bothered by headlights rather than noise (pers. observ). The chance of this event is low and more a single car event (e.g. 4 a.m. arrival/departure home) for pre dawn feeding periods. Pre dusk summer evenings are more common for car activity (e.g. 7 p.m. arrival/departure home).

7.8.4.2 POTENTIAL CONVERSION OF OPENINGS TO FOREST

The west quadrat will continue in golf course use, thus grassland birds will not be displaced by forest succession of fallow fields. SAAR also assessed the potential of open meadow to perform as habitat for threatened species and nest habitat for grassland birds including Bobolink since we observed these species within the 10km block. Grassland was assessed and cross referenced to refereed scientific journal field experiments to assist with practical mitigation detail for the grass height and time of mowing.

Our review of the General Habitat of Bobolink (MNR, 2018) provided land use descriptions which allow one to conclude that the proposed resort residential land use is compatible since living on the parcel (in the proposed areas) would not result in:

- *Development activities that result in significant fragmentation or removal of large tracts of suitable grasslands.*
- *Indiscriminate application of pesticides within habitat*

The proposed 29 estate residential homes would not be constructed on or immediately adjacent to the General Habitat of the Bobolink. Given that the uses are also compatible by MNRF definitions, not fragmenting general habitat or employing large quantities of pesticide, we find it reasonable to suggest the following:

1. Residential vs. farming use will use less or no pesticide
2. Residential vs. farming use with adherence to mitigation will result in greater chances of natural heritage system grow back; vegetation succession of wildlife hedgerow links to core and corridor area, and
3. Enhancement plantings will bolster ANSI values and connectivity, which is lacking on portions of this agrarian landscape

The Homestead Golf Course has an existing nutrient management program which is not heavy in use and application of phosphorus and nitrogen. SAAR liaised with the golf course manager to further detail the Homestead Golf Course controls in place, including the standards for regulating any potential pest management; the course is IPM Certified (Integrated Pest Management) which guides and directs weed control.

The fairways and roughs have not received fertilizer in the past fifteen years. Clippings from mowing are turned into the golf course lawns as mulch. Nutrient management at the currently operating golf course includes slow release fertilizer pellets. Slow release fertilizer is applied to specific limited areas of the golf course. These are the "T" decks and the greens. Slow release fertilizer is used to avoid quick surges in grass growth both from a maintenance perspective to limit mowing, and to make best use of the nutrient, limiting conveyance in storm run off on the parcel. There are no "T" decks or greens beside shore. Applications are limited; one application annually for "T" decks, three to four applications annually for the greens.

7.9 PRE AND POST DEVELOPMENT WATER QUALITY AND QUANTITY

Storm water events on the pre and post development site received careful attention due to the location of development beside a shallow lake feature. It is our understanding from discussions and visual observation of the site soils and landform that the native sand and gravel soils promote infiltration of rain events vs. a clay or silty site. Our review of the proposed development in particular focused on any potential impact to the thermal regime of the wetland habitats as well as water quality and quantity entering the connected pond systems.

The furthest northerly pond supports the largest quantity of young of the year Brook Trout, and lesser Brown Trout in a healthy nursery. The furthest southerly on line pond also supports older trout. Thermal regime is important and indeed why the ponds continue to provide this ecological function of coldwater regime during spring which supports the fish nursery and feeding ground ecological features.

The groundwater flow regime and surfacewater creeks contributing water to Pond 1 and 2 will continue to contribute the necessary pre development flows. The most southerly Pond 3, located west of the entrance road, is not linked to trout ponds. It exhibits considerable seasonal fluctuation (1.10m, pers. observ.) and may contribute water - similar to existing conditions - into the trout pond system during peak spring freshet and snow melt. After development, during spring flow conditions, if the pond reaches the elevation of the overflow culvert, the depth is anticipated at approximate one metre. These conditions have already been observed to occur during rain events in the past. If this were to occur in single events, the water quality would not be significantly impacted as the trout ponds receive stormwater events during this time. The event, if it contributed waters in the spring, would not overlap the fall spawning of Brook trout. Given the high infiltration capacity of the native soils, and the elevation difference across the site, the Camp Creek Tributary baseflows, water quality and the thermal regime are supported by groundwater which is not altered by the proposed works.

The trout may spawn near shore on Wilder Lake and/or along the gravel back riffle areas of the inlets to the ponds on site. Excellent substrate is available for this egg deposition including a range of clean gravel down to pea gravel size and super-oxygenated waters at the riffle zones.

Significant depression of oxygen levels and/or related thermal regime, for instance due to sedimentation, is not reasonably anticipated through the proposed stormwater design. Changes in the preferred pH (6.5-8) are also not projected.

The trout ponds are groundwater dominated, thus coupled with the fact that spring spillover from Pond 3 will have no storage time, groundwater (4-8 C) will not be impacted. Setback areas from the wetland features are recommended for native plantings for nutrient attenuation function as well as wildlife direct value for shading pond features to maintain cold and coolwater temperatures and provide a sheltered riparian corridor for species meandering the pond edges. Shrub layers are recommended for the southerly Pond with tree strata for the upland open terrain of the off line Pond 3 situated and grading into a higher elevation.

All level bases of proposed stormwater roadside swales will be grass seeded with mixtures also of native sedges and rushes with known performance to attenuate phosphorus and nitrogen further; here *Scirpus rubrotinctus* and *Juncus effusus* are recommended and can be mowed for general site maintenance. The robust plants withstand a wide range of water regime from saturation to periods of drought.

8.0 MITIGATION SUMMARY

To conform with the Provincial Policy Statement policy 2.1.8 and all natural heritage components of PPS Section 2.1, mitigation measures for this application should include the following. Note that the standard BMP (Best Management Practice) of containing sediment at each building envelope is assisted at this site by topography and land use history; there is no overland flow of water along the proposed shoreline lots into Wilder Lake due to a raised break in sloping topography. This ditching is a past artifact of an old railway bed that existed in conjunction with mining the limestone from portions of Wilder Lake. *Also, the soils are well suited to infiltrating rain events at each lot.* Thus, more rigorous perimeter control is only required along the pond chain for rear lot topography around lots 1-4 that do not benefit from the lakeshore railway bed.

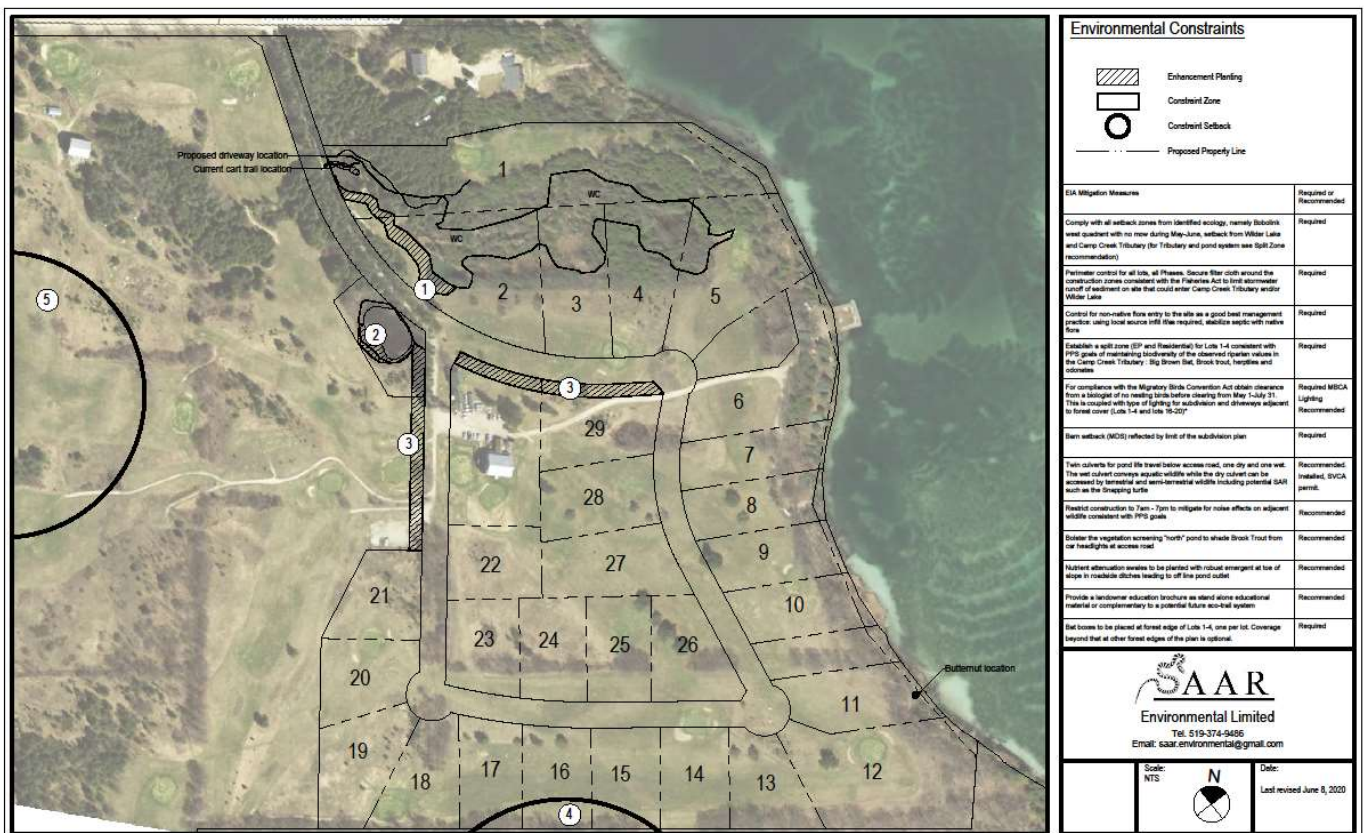


Figure 15: Constraint Map (earlier Figure 10) reproduced here for text purposes

- Secure filter cloth around the perimeter of the work area to limit sediment to building envelope areas
- Limit grading at lots 5 through 12 due to elevation grade toward Wilder Lake
- Bolster long term wildlife corridor links by planting gaps in the existing hedgerows between the ponds, and south forest patch to existing inland hedgerows consistent with the policies of the PPS Section 2.1.2
- No tree or shrub with a bird nest is permitted to be removed between April 1 and August 15 of any year. Migratory Birds Convention Act, 1994 and/or Regulations under that Act compliance requires a field check by the biologist a few days before tree removal if trees are to be cleared between May 1 and July 31
- Restrict construction days to 7am - 7pm avoiding noise impact at night
- Plant native vegetation vs. exotic species around homes

PPS 2.1.2 The diversity and connectivity of natural features in an area, and the long-term ecological function and biodiversity of natural heritage systems, should be maintained, restored or, where possible, improved, recognizing linkages between and among natural heritage features and areas, surface water features and ground water features.

PPS S.2.1.8: Development and site alteration shall not be permitted on adjacent lands to the natural heritage features and areas identified in policies 2.1.4, 2.1.5, and 2.1.6 unless the ecological function of the adjacent lands has been evaluated and it has been demonstrated that there will be no negative impacts on the natural features or on their ecological functions.

9.0 CONCLUSIONS

The estate residential 29 lots can meet the goal of the natural heritage policies within the Provincial Policy Statement (PPS) by first using the principle mitigative tool of design and placement outside of any sensitive areas. Second, the most recent emphasis in the 2014 PPS on wildlife corridors is also met through enhancement plantings and eco-passage construction to facilitate corridor movement for wetland wildlife such as the Snapping Turtle from the open water pond feature across the Homestead Golf entrance road into the thicket and treed swamp water feature. This conforms with PPS S. 2.1.2.

With adherence to mitigation and refined lot fabric (split zoning) as illustrated on the Planning Report Figure 6 Proposed Zones we continue to find that the proposed estate residential development can be sustained by natural heritage with no negative impact, consistent with PPS S. 2.1.

Mitigation for the significant wildlife habitat of Bobolink coupled with the Enhancement Planting Plan ensures that the post construction environment of the subdivision and golf course provides a strengthened Natural Heritage System with the net gain biological diversity and wildlife connectivity guided by the PPS.

Nutrient management on the site is paramount given the proximity of the shallow marly Wilder Lake resource. As such, SAAR is satisfied with the decisions reached on site which helped inform the final stormwater management location for storm ponds within the subdivision.

Namely, as reported on earlier within the EIA, the 20.8 hectare residential subdivision at 263512 Southgate Road 26 in the Township of Southgate will have all storm quality and quantity ready to serve the entire subdivision needs (Phase 1 and Phase II) at the end of Phase I. This is a conservative measure and a precautionary one that SAAR feels suits the nutrient management of the site given the nearby Wilder Lake shallow waterbody. It is also prudent and tailored to the parcels existing character of open land golf course; treed areas are limited to around pond and creek systems, the Wilder Lake shoreland, hedgerows and the southern forest that falls off site.

SAAR is thus pleased to note that the total post subdivision peak flows that will leave the subdivision via the four proposed outlets, as well as the property as a whole, will be attenuated to less than, or equal to, the total existing conditions of peak flow rates. This is largely due to the fact that the site benefits from soils with good infiltration rates; permeable sand and gravel, and that an enhanced level of water quality treatment will be applied to this site.

The enhanced treatment removes eighty percent of the total suspended solids from storm events by settling them before entry into aquatic systems such as the pond chain on the site with support ecology.

SAAR finds the level of storm control for the subdivision that in part arises from good stewardship during proponent meetings on site with the stormwater engineer and ecologist, reflects a healthy use of outlet locations, enhanced treatment and selected planting prescriptions for the toe of slope overland drainage ditches to control for nutrient on site.

The main entrance to the subdivision crosses a nearby pond and creek system which supports winter incubating Brook Trout. Winter de-icing (sand, salt) requires containment before entry into the system.

A combination of banking and rugged salt tolerant vegetation has been recommended for the main roadway. Provision of vegetated screening has also been detailed further on GMBLuePlan Drawing 8 Plan and Profile at a pinch point on Lot 1, where much of an existing cart trail is recommended for the future driveway to reduce the amount of trees to be removed. This area off the north pond has been expanded in response to SVCA query, and can be staked/flagged on site with SAAR+SVCA at later design and detail stage.

9.1 IMPACT STATEMENT

This report has been prepared by SAAR Environmental Limited.

The assessment represents the conditions at the subject property at the time of the assessment, and is based on the information referenced and contained in the report. The conclusions presented herein respecting current conditions represent the best judgment of the assessors based on current environmental standards. SAAR finds with adherence to our recommended mitigation that the residential land use meets policy tests of no negative impact. In particular we find the proposal to be consistent with Section 2.1 Natural Heritage policies of the Provincial Policy Statement.

Mitigation is summarized in table format on the following pages for the subdivision agreement.

Report prepared by:



Linda-Liisa Sober, H.B.Sc.

Senior Ecologist

SAAR Environmental Limited

EIA Mitigation for Subdivision Agreement	Required or Recommended?	Implementing Tool
<p>1. Comply with all setback zones from identified ecology on Map 2, namely Bobolink west quadrat with no mow during May-June, setback from Wilder Lake and Camp Creek Tributary (for Tributary and pond system see Split Zone recommendation)</p> <p><i>Bobolink foraging habitat broadening of "rough" in west quadrat can be flagged and/or staked on site with SAAR+SVCA if/as required at design and detail stage</i></p>	Required	Site Plan Control (SPC) Subdivision Agreement
2. Perimeter control for all lots, all Phases. Secure filter cloth around the construction zones consistent with the Fisheries Act to limit stormwater runoff of sediment on site that could enter Camp Creek Tributary and/or Wilder Lake	Required	SPC
3. Entrance crossing of Camp Creek Tributary close to wintering pond for incubating Brook Trout eggs requires roadside vegetation barrier to limit winter road de-icing compound entry into watercourse. Preferred road surface treatment to date is sand vs. salt at this 10m length of roadway and culverts	Required	SPC
4. Direct rainwater that sheds off impervious roof and driveway surface roadside swales for infiltration and cleansing before entry into the four outlets. Robust emergent will be in particular required before discharge to off line pond to adsorb nutrient from overland flows	Required	SPC
5. Control for non-native flora entry to the site as a good best management practice: using local source infill if/as required, stabilize septic with native flora	Required	SPC
6. Establish a split zone (EP and Residential) for Lots 1-4 consistent with PPS goals of maintaining biodiversity of the observed riparian values in the Camp Creek Tributary : Big Brown Bat, Brook trout, herptiles and odonates. <i>Zone varies in dimension; e.g. Lot 1 the cart trail falls within 15m but retains tree cover if used for future driveway. *Lot 1 cart trail entry from roadway for 10m length can be setback 5m further from north pond, and can be staked on site with SAAR+SVCA during later design and detail if/as required</i>	Required	SPC/Zoning By-Law (ZBL)
7. For compliance with the Migratory Birds Convention Act obtain clearance from a biologist of no nesting birds before clearing from May 1-July 31. This is coupled with Night Sky Lighting for subdivision lots adjacent to forest (Lots 1-4, lots 16-20)*	Required MBCA Lighting recommended	MBCA for birds Subdivision Agreement
8. Barn setback (MDS) reflected by limit of the subdivision plan	Required	Site Plan Boundary

9. <i>Twin culverts for pond life travel below access road, one dry and one wet have been installed. The wet culvert conveys aquatic wildlife while the dry culvert can be accessed by terrestrial and semi-terrestrial wildlife including potential SAR such as the Snapping turtle</i>	Recommended. Installed, SVCA Permit.	Subdivision Agreement
10. Restrict construction to 7am - 7pm to mitigate for noise effects on adjacent wildlife consistent with PPS goals	Recommended	SPC Subdivision Agreement
11. Bolster the vegetation screening northerly Pond to shade Brook Trout from car headlights at access road	Recommended	SPC
12. Limit tree clearing to view slots and narrow pathways for lots fronting Wilder Lake	Recommended	SPC
13. For lots adjacent to forest, align driveways at right angles to forest to reduce headlight glare	Recommended	SPC
14. Nutrient attenuation swales to be planted with robust emergent at toe of slope in roadside ditches leading to off line pond outlet	Recommended	Subdivision Agreement
15. Provide a landowner education brochure as stand alone educational material or complementary to a potential future eco-trail system that provides information on both natural and cultural heritage on and near the subdivision e.g. Southerly Earth Science feature History of marl extraction in Wilder Lake Fishery including rearing ponds of Brook Trout Species at Risk Species of Interest include Big Brown Bat, Dragon and Damselflies, Snapping Turtle, Bobolink	Recommended	Voluntary

LITERATURE

- Barn Swallow in Ontario. 2014. Ontario Recovery Strategy Series, for the Endangered Species Act.
- Bertin, R. I. (1977). Breeding habitats of the Wood Thrush and Veery. *The Condor*, 79(3), 303-311.
- Burne, M. R., & Griffin, C. R. (2005). Protecting vernal pools: a model from Massachusetts, USA. *Wetlands Ecology and Management*, 13(3), 367-375.
- Cadman, M.D., Eagles, P.F.J. and F. M. Helleiner. 1987. *Atlas of the Breeding Birds of Ontario*. Federation of Ontario Naturalists and the Long Point Bird Observatory. University of Waterloo Press.
- Dobbyn, J., 1966. *Atlas of the Mammals of Ontario*. Federation of Ontario Naturalists.
- Heagy, A., D. Badzinski, D. Bradley, M. Falconer, J. McCracken, R.A. Reid and K. Richardson. 2014. Recovery Strategy for the Barn Swallow (*Hirundo rustica*) in Ontario. Ontario Recovery Strategy Series. Prepared for the Ontario Ministry of Natural Resources and Forestry, Peterborough, Ontario. vii + 64 pp
- Hull, S. D. 2000 (revised 2002). Effects of management practices on grassland birds: Eastern Meadowlark. Northern Prairie Wildlife Research Center, Jamestown, ND. 35 pages.
- Bollinger, E.K. and T.A. Gavin. 1992. Eastern Bobolink populations: ecology and conservation in an agricultural landscape. Pp. 497–506 in J.M. Hagan III and D.W.
- Congdon, J. D., Breitenbach, G. L., van Loben Sels, R. C., & Tinkle, D. W. (1987). Reproduction and nesting ecology of snapping turtles (*Chelydra serpentina*) in southeastern Michigan. *Herpetologica*, 39-54.
- Corace, R. G. III. 2007. Using multiple spatial scales to prioritize openland bird conservation in the Midwest. Dissertation. Michigan Technological University.
- Corace, R. G., III, D. J. Flashpohler, and L. M. Shartell. 2009. Geographical patterns in openland cover and hayfield mowing in the Upper Great Lakes region: implications for grassland bird conservation. *Landscape ecology* 24:309-323.
- Corace, R. G., III. 2011. Upland Sandpiper (*Bartramia longicauda*).in A. T. Chartier, J. J. Baldy, and J. M. Brenneman, editors. *The Second Michigan Breeding Bird Atlas*. Kalamazoo Nature Center, Kalamazoo, Michigan.
- COSEWIC. 2012. Assessment and Status Report on the Eastern Wood Pewee. Special Concern.
- Dale, B.C., P.A. Martin, and P.S. Taylor. 1997. Effects of hay management on grassland songbirds in Saskatchewan. *Wildlife Society Bulletin* 25:616-626.

- Environment Canada. 2015. Recovery Strategy for Little Brown Myotis (*Myotis lucifugus*), Northern Myotis (*Myotis septentrionalis*), and Tri-colored Bat (*Perimyotis subflavus*) in Canada [Proposed]. *Species at Risk Act* Recovery Strategy Series. Environment Canada, Ottawa. ix + 110 pp.
- Foster R.W. and A. Kurta, 1999. Roosting Ecology of the Northern Bat (*Myotis septentrionalis*) and comparisons with the endangered Indiana Bat (*Myotis sodalis*). *Journal of Mammology*. 80: 659-672.
- Frei, B. 2009. Ecology and management of Bobolinks in hayfields of Québec and Ontario. M.Sc. thesis, McGill University, Montréal. 79 pp.
- Galli, A.E., Leck, C.F. and R.T.T. Forman. 1976. Avian distribution patterns in forest islands of different sizes in New Jersey. *Auk*. 93(2): 356-364.
- Jobin, B., J.-L. Desgranges, and C. Boutin. 1996. Population trends in selected species of farmland birds in relation to recent developments in agriculture in the St. Lawrence Valley. *Agriculture, Ecosystems & Environment* 57:103-116.
- Lee, H., Bakowsky, W., Riley, J., Bowles, J., Puddister, M., Uhlig, P. and S. McMurry. 1998. Ecological Land Classification for Southern Ontario. First Approximation and its application. SCSS Field Guide FG-02. OMNR Southcentral Sciences, Natural Heritage Information Centre and Sustainable Forestry Initiative.
- MNRF. 2018. General Habitat Description for Bobolink.
- MNRF. 2010. Forest Management Guide for Conserving Biodiversity at the Stand and Site Scales. Toronto: Queen's Printer for Ontario. 211 pp.
- Martin, S.G. 1971. Polygyny in the Bobolink: habitat quality and the adaptive complex. Ph.D. dissertation, Oregon State University, Corvallis, Oregon. 181 pp.
- Martin, S.G. and T.A. Gavin. 1995. Bobolink. 24 pp., in A. Poole and F. Gill (eds.). *The Birds of North America. Life Histories for the 21st Century*, No.176. The Academy of Natural Sciences of Philadelphia, Philadelphia.

McCracken, J.D., R.A. Reid, R.B. Renfrew, B. Frei, J.V. Jalava, A. Cowie, and A.R. Couturier. 2013. DRAFT Recovery Strategy for the Bobolink (*Dolichonyx oryzivorus*) and Eastern Meadowlark (*Sturnella magna*) in Ontario. Ontario Recovery Strategy Series. OMNR 86 pp.

OMMA. 2014. Provincial Policy Statement, April 2014. Province of Ontario.

Ontario Ministry of Natural Resources (OMNR), 2000. Significant Wildlife Habitat Technical Guide. Fish and Wildlife Branch, Wildlife Section, Science Development and Transfer Branch, Southcentral Sciences Section. Internal Report. Available Online @ www.mnr.gov.on.ca/mnr/pubs/swhtg.pdf

Peck, G.K. and R.D. James. 1983. Breeding Birds of Ontario. Nidology and Distribution. Volume 1: Non Passerines. Royal Ontario Museum.

Racey, P.A. and A.C. Entwistle. 2003. Conservation ecology of bats in: Bat Ecology. Kunz, T.H. and M.B. Fenton. University of Chicago Press.

Sedgeley J. A. and C.F.J. O'Donnell. 1999b. Roost selection by the long-tailed bat, *Chalinolobus tuberculatus*, in temperate New Zealand rainforest and its implications for the conservation of bats in managed forests. Biological Conservation, 88: 261-276.

Van Damme, L.M. 1999. Status of the Bobolink in British Columbia. Wildlife Working Report No. WR-93. Ministry of Environment, Lands and Parks Wildlife Branch, Victoria, British Columbia.

Wiens, J.A. 1969. An approach to the study of ecological relationships among grassland birds. Ornithological Monographs 8:1-93.

Wittenberger, J.F. 1978. The breeding biology of an isolated Bobolink population in Oregon. The Condor 80:355-371.

APPENDIX A

DRAFT PLAN OF SUBDIVISION ECOLOGY CONDITIONS

ECOLOGY CONDITIONS SUBDIVISION AGREEMENT

1.0 PLANTING SPECIFICATIONS

1.1 Landowners guarantee plant material for two years from installation, replacing dieback documented during the audit.

1.2 Prohibit invasive species.

1.3 Mimic natural area shape to attract wildlife; plant in clusters of 3-5 plants in meandering shapes vs. straight lines.

2.0 EXISTING PERMITTED USES

2.1 Structures

The dimension of the planting areas is indicated on the Rplan. It does not interfere with future ability to erect a shed under the existing zoning by-law 2m from the rear or side lot line. Native plantings are limited to 2m from the rear yard lot limit.

2.2 Non-native Flora

The EPP does not restrict landowners from planting ornamental garden species; it does encourage that ornamentals are directed to the periphery of the residence to avoid replacing the native flora planted in rear lot areas. The goal of the native planted areas is to enhance and link to existing surrounding natural areas by planting near the rear lot line area as illustrated.

3.0 SEED SOURCE

Seed and plant material to be from the local eco-district. The conservation authority may be a good source in spring during Arbor Day sales. Seed stock can include plugs if soil is dry, and seeding in clay balls to limit bird predation.

3.1 ORNAMENTAL PLANTS

Limit ornamental planting to the perimeter of the home for amenity enhancement. Avoid selecting ornamentals that may invade and compete with rear yard plantings (e.g. periwinkle).

4.0 PLANTING SPECIFICATIONS

Plant growth can be audited by the municipality, SVCA and/or SAAR up to two growing seasons after installation.

4.1 REAR YARD DOWNWARD DIRECTED LIGHTING

Illuminate rear yards flanking natural areas without glare using downward directed lighting. One example is provided below:



5.0 VIEWSLOTS

Limit viewslots for lots flanking Wilder Lake to 3m (10') horizontal cuts.

APPENDIX B

ENHANCED PLANTING PLAN DETAIL, GMBLUEPLAN UPDATED DRAWING 8

SPECIES TARGET LOTS 1 AND 2 POND SLOPES AND BUFFER AREA

APPENDIX C

SPECIES LISTS

Vascular Plants

Latin Name	Common Name	Location for Conservation
Equisetaceae	Horsetail Family	
Equisetum arvense	Field Horsetail	
Dennstaedtiaceae	Bracken Family	
Pteridium aquilinum	Bracken Fern	
Dryopteridaceae	Wood Fern Family	
D. intermedia	Evergreen Wood Fern	
Onoclea sensibilis	Sensitive Fern	
Thelypteridaceae	Marsh Fern	
Thelypteris palustris	Marsh Fern	
Cupressaceae	Cypress Family	
Thuja occidentalis	White Cedar	
Pinaceae	Pine Family	
Abies balsamea	Balsam fir	
Picea glauca	White Spruce	
Picea abies	Norway Spruce	
Pinus strobus	White Pine	

Pinus sylvestris	Scots Pine	
Poaceae	Grass Family	
Agrostis gigantea+	Redtop	
Agrostis stolonifera+	Creeping Bent Grass	
Dactylis glomerata+	Orchard Grass	
Danthonia spicata	Poverty Oat Grass	
Phalaris arundinaceae	Reed Canary Grass	
Poa compressa	Canada Blue Grass	
Poa pratensis	Kentucky Bluegrass	
Glyceria striata	Fowl Manna Grass	
Lolium arundinaceum	Kentucky Fescue + exotics for golf course	
Phleum pratense	Timothy	
Leeria oryzoides	Cutgrass	
Cyperaceae	Sedge Family	
Carex gracillima	Graceful Sedge	
Carex brunnescens	Brownish Sedge	
Carex flava	Yellow Sedge	
Carex michauxiana	Michauxs Sedge	
Carex flava	Yellow Sedge	
Carex lacustris	Lake Sedge	
Carex vulpinoidea	Fox Sedge	

Carex stipata	Prickley Sedge	
Carex retrorsa	Retorse Sedge	
Scirpus rubrotinctus	Panicked Bulrush	
Scirpus atrovirens	Woolgrass	
Juncus effusus	Soft Rush	
Bromus inermis	Smooth Brome	
Eleocharis erythropoda	Bald Spikerush	
Lemnaceae	Lemna minor	
Sparganeaceae	Sparganium eurycarpum	
Nymphaeaceae	Water Lily Family	
Nuphar variagata	Yellow Pond Lily	
Potamogeton natans	Pondweed	
Pontederiaceae	Water Hyacinth Family	
Pondetera cordata	Pickernelweed	
Haloregaceae	Milfoil Family	
Myriophyllum sibiricum	Eurasian Milfoil	
Juncaceae	Rush Family	
J effusus	Common Rush	
J. tenuis	Poverty Rush	

Liliaceae	Lily Family	
Hemerocallis fulva+	Orange Day Lily	
Polygonatum odoratum	Solomon's Seal	
Streptopus amplexifolius	Twisted-Stalk	
Mainthemum canadensis	Wild Lily of the Valley	
Violaceae	Violet Family	
Viola sororia	Wood Violet	
Salicaceae	Willow Family	
Populus balsamifera L.	Balsam Poplar, Balm of Gilead	
Populus grandidentata	Large Toothed Aspen	
P. tremuloides	Trembling Aspen	
Salix discolor	Pussy Willow	
Salix bebbiana	Bebb's Willow	
Salix lucida	Shining Willow	
Betulaceae	Birch Family	
Alnus incana	Speckled Alder	
B. papyrifera	White Birch	
Ostrya virginiana	Ironwood	
Fagaceae	Beech Family	
Quercus rubra	Red Oak	

Ulmaceae	Elm Family	
Ulmus americana L.	White Elm	
Juglandaceae	Walnut Family	
Juglans x quadrangulata	Hybrid White Walnut	Laneway hybrid removed during road improvement
Juglans cinerea	Butternut	Shoreland, not being disturbed. Dead standing.
Juglans nigra	Black Walnut	
Polygonaceae	Buckwheat Family	
Rumex crispus	Curly Dock	
Ranunculaceae	Crowfoot Family	
Ranunculus acris L.	Tall Buttercup	
Rosaceae	Rose Family	
Aronia melanocarpa	Chokeberry	
Fragaria virginiana	Common Strawberry	
Prunus pensylvanica	Pincherry	
Spirea alba	Narrow-leaved Meadowsweet	
Prunus serotina	Black Cherry	

Prunus virginiana	Chokecherry	
Rosa acicularis	Prickly Wild Rose	
R. strigosus	Wild Red Raspberry	
Frageria virginiana	Virginia Strawberry	
Potentilla simplex	Cinquefoil	
P. anserina	Silverweed	
Malus pumila	Common Apple	
Crataegus sp	Hawthorn shrubs	
Apiaceae	Umbellifer Family	
Daucus carota	Wild Carrot	
Leguminosae	Bean Family	
Lotus corniculatus+	Birds-foot Trefoil	
Melilotus alba+	White Sweet Clover	
Trifolium pretense+	Red Clover	
Vicia cracca L.+	Cow vetch	
Cucurbitaceae	Gourd Family	
Echinocystis lobata	Wild Cucumber	
Anacardiaceae	Cashew Family	
Rhus radicans	Poison ivy	
R. typhina	Staghorn Sumac	
Aceraceae	Maple Family	

Acer saccharum	Sugar Maple	
Rhamnaceae	Buckthorn Family	
Rhamnus cathartica	Common Buckthorn	
R. alnifolia	Alderleaf Buckthorn	
Adoxaceae	Elderberry Family	
Sambucus nigra	Elderberry	
Rubiaceae	Madder Family	
Galium palustre	Marsh Bedstraw	
Typhaceae	Cattail Family	
Typha angustifolia	Narrow-leaved Cattail	
Vitaceae	Grape Family	
Vitus riparia	Frost Grape	
Tiliaceae	Linden Family	
Tilia Americana	Basswood	
Araliaceae	Ginseng Family	
Aralia nudicalis	Wild sarsaparilla	
Aralia racemosa	Spikenard	
Cornaceae	Dogwood Family	
Cornus sericea	Red-osier Dogwood	
C. amomum	Silky Dogwood	
C. alternifolia	Alternate-leaved Dogwood	

Oleaceae	Olive Family	
Fraxinus Americana	White Ash	
F. pennsylvanica	Green Ash	
Asclepiadaceae	Milkweed Family	
Asclepias syriaca	Common Milkweed	
Boraginaceae	Borage Family	
Myosotis arvensis+	Forget-me-not	
Lamiaceae	Mint Family	
L. uniflorus Michx.	Northern Bugleweed	
Mentha arvensis L.	Wild Mint	
Lycopus americanus	Water Horehound	
Monarda fistulosa	Wild Bergamot	
Prunella vulgaris L.	Heal's All	
Satureja vulgaris	Dogmint	
Solanaceae	Nightshade Family	
Solanum dulcamara L.	Climbing Nightshade	
Scrophulariaceae	Figwort Family	
Linaria vulgaris	Butter and Eggs	
Verbascus Thapsus	Common Mullein	
Veronia officinalis+	Common Speedwell	

Plantaginaceae	Plantain Family	
Plantago lanceolata	English Plantain	
Plantago major	Common Plantain	
Caprifoliaceae	Honeysuckle Family	
Viburnum lentago	Nannyberry	
V. acerifolium	Maple-leaf Viburnum	
Balsaminaceae	Touch-me-not Family	
Impatiens capensis	Spotted Touch-me-not	
Asteraceae	Aster Family	
Achillea millefolium	Yarrow	
Ambrosia artemisiifolia	Common Ragweed	
Anaphalis margaritacea	Pearly Everlasting	
Arctium minus	Common Burdock	
Aster macrophyllus	Large Leaved Aster	
Aster novae-angliae	New England Aster	
Chrysanthemum leucanthemum+	Oxeye Daisy	
Cichorium intybus+	Chickory	

<i>Cirsium arvense</i>	Canada Thistle	
<i>Erigeron annuus</i>	Annual Daisy Fleabane	
<i>Centuaurea stoebe</i>	Spotted Knapweed	
<i>Hieracium aurantiacum</i>	Orange Hawkweed	
<i>H. caespitosum</i>	Yellow Hawkweed	
<i>Senecio aureus</i> L.	Golden Ragwort	
<i>S. canadensis</i>	Canada Goldenrod	
<i>S. hispida</i>	Hairy Goldenrod	
<i>S. nemoralis</i>	Grey stemmed Goldenrod	
<i>Euthamia graminifolia</i>	Grass-leaved Goldenrod	
<i>Taraxacum officinale</i>	Dandelion	
<i>Tussilago farfara</i>	Coltsfoot	
<i>Eupatorium maculatum</i>	Spotted Joe Pye Weed	

+ Naturalized

R and THR Ontario Rare and Threatened Conservation Status

Herptiles

[illegible]

[illegible]

[illegible]

[illegible]

	Mink	Mustela vison	G5S5	x										
	Striped Skunk	Mephitis mephitis	G5S5	x										
	River Otter	Lontra canadensis	G5S5											
	Bobcat	Lynx rufus	G5S4											
	White-tailed Deer	Odocoileus virginianus	G5S5	x										
	Moose	Alces alces	G5S5											

Fish List

Family Name	Species	Common Name	Rank
Salmonidae	Salvelinus fontinalis	Brook Trout	G5S5
An exotic (1800s introduction)	Salmo trutta	Brown Trout YOY	G5SE
Catostomidae	Catostomus commersoni	Common White Sucker	G5S5
Cyprinidae	Phoxinus eos	Northern Redbelly Dace	G5S5
Umbridae	Umbra limi	Central Mudminnow	G5S5
Gasterosteidae	Culaea inconstans	Brook Stickleback	G5S5
erranidae	Micropterus salmoides	Largemouth Bass	G5S5
Serranidae	Ambloplites rupestris	Rock Bass	G5S5
Serranidae	Micropterus dolomieu	Smallmouth Bass	G5S5
Esocidae	Esox lucius	Northern Pike	G5S5

(Source: Scott, W.B. 1967. Freshwater Fishes of Eastern Canada).

Central Mudminnow was in drain (May), dry ditch in June.

Wilder Lake angler diaries: Smallmouth Bass, Brown Bullhead, Yellow Perch, Pumpkinseed

BIRDS

Birds recorded during both June surveys are noted as likely breeders on or near the site (B).

Migrant birds are denoted with “M”. Adjacent lands sightings are “ADJ” with compass direction.

American Robin	B
American Goldfinch	B
Purple Finch	
American Woodcock	ADJ (W) M
Baltimore Oriole	B
Eastern Kingbird	B
Ruby-throated Hummingbird	
Common Grackle	B
American Crow	B
American Phoebe	B
Black-capped Chickadee	B
Northern Flicker	B
Rose-breasted Grosbeak	B
American Redstart	B ADJ S
Common Yellowthroat	B
Chestnut-sided Warbler	B ADJ S

Red-eyed Vireo	B ADJ S
Killdeer	
Ring-billed Gull	
Gray Catbird	B
Mourning Dove	B
Chipping Sparrow	B
Barn Swallow	Occassional flight on and off site, no nest structures
Bobolink	F ADJ LAND WEST
Great-crested Flycatcher	POND X SPRING MIGRANT

BATS

Big Brown Bat

ODONATES

Aeshna sp. partial I.D. Darner

Calopteryx maculata Ebony Jewelwing

Enallagma hageni Hagen's Bluet

E. erbiium Marsh Bluet

Hetaerina Americana American Rubyspot (I.D. on wing)

Lestes disjunctus Common Spreadwing

Amphiagrion saucium Eastern Red Damsel (I.D. on wing, potential)

Libellula pulchella Twelve-spotted Skimmer

Anax junius Green Darner

Appendix D

GRASSLAND BIRD RESEARCH

Habitat studies

Field research indicates site tenacity; use of hay fields 8+ years with annual cuts, and lesser preference lightly grazed pasture, fallow field, old field and young hayfield (Bollinger and Gavin, 1992: Bollinger, 1995), old abandoned field (cultural meadow) with less use of grain fields (Martin 1971, Bollinger et al. 1990, Van Damme 1999, Dechant et al. 2001, Normont et al. 2010). The study site fallow fields within 500m of the observed foraging grassland Bobolink support some early succession amidst remnant Hawthorn specimen trees with Apple, and Trembling Aspen with Dogwood at forest edges.

Bobolinks don't appear to select row crops such as corn and soybean (Sample 1989, Jobin et al. 1996) but have in southwestern Ontario (Norfolk, Chatham-Kent, Essex, Durham) nested in fields **larger than 50 hectares** with winter wheat and rye (D. Martin and J. Holdsworth, pers. comms. 2011, J. McCracken, pers. obs. 2012, Sober, pers. Obs. 2014 North Wellington County). Mean territory size ranges from 0.4ha - 2ha (Wiens 1969, Martin 1971, Wittenberger 1978, Bollinger and Gavin 1992, Lavallée 1998). Nests are built on the ground usually at the base of tall forbs (Martin and Gavin 1995). In the uncut hayfields of Ontario and Quebec nest success rates are 43% (Frei 2009).

During the breeding season, adults feed on 57% insects and 43% seeds (Martin and Gavin 1995). Bobolinks nest primarily in hayfields and pastures (Bollinger and Gavin 1992, Bollinger 1995, Martin and Gavin 1995, Jobin et al. 1996, Cadman et al. 2007). These habitats are typically dominated by *Phleum pratense*, *Poa pratensis*, and *Trifolium* spp (Dale et al. 1997, VanDamme 1999, Frei 2009). There is *Phleum* on site at edges, but the majority of the area of observed foraging was golf course fairway.

We have observed nest success on other sites that are grazed by cattle but low intensity with less than 50 head of cattle (Sober, pers. Observ.), grazing that maintains grass at 10-30 cm (Risser et al. 1981, Jones and Vickery 1997). The study site does not support cattle and grass falls into two general categories: 1) golf course fairway and rough, and 2) edges of early succession taller herbaceous vegetation. Bobolink appear to favor the taller herbaceous species (Martin 1971, Schneider 1998) more than Eastern Meadowlarks (Sample 1989, McCoy 1996). For Bobolinks, microhabitat preferences are best matched in regularly maintained hayfields and grasslands. If not maintained, Bobolinks may decline significantly due to accumulation of litter and shrub encroachment (Johnson 1997). The species responds positively to properly-timed mowing and burning, with abundance peaking one to three years after disturbance (Bollinger and Gavin 1992, Johnson 1997, Madden et al. 1999).

Microhabitat preferences are best matched in regularly maintained hayfields that are not cut early in the season and grasslands (McCracken et al. 2013).

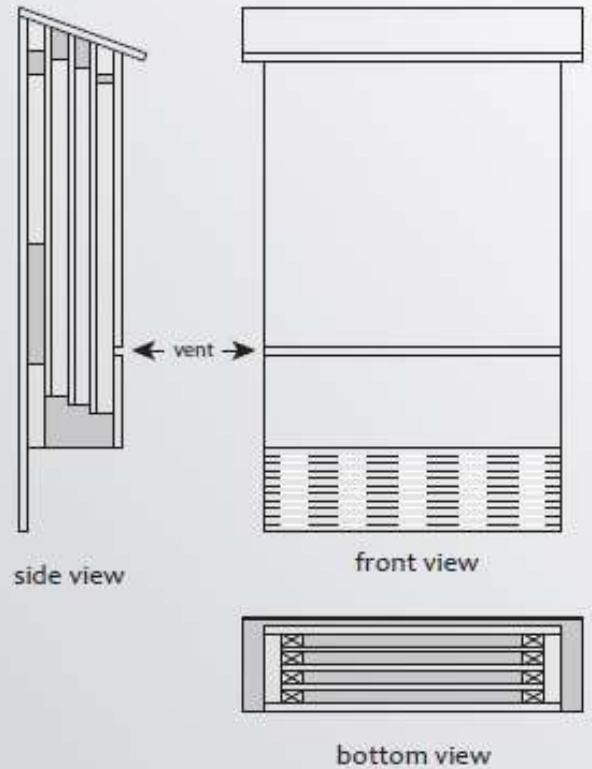
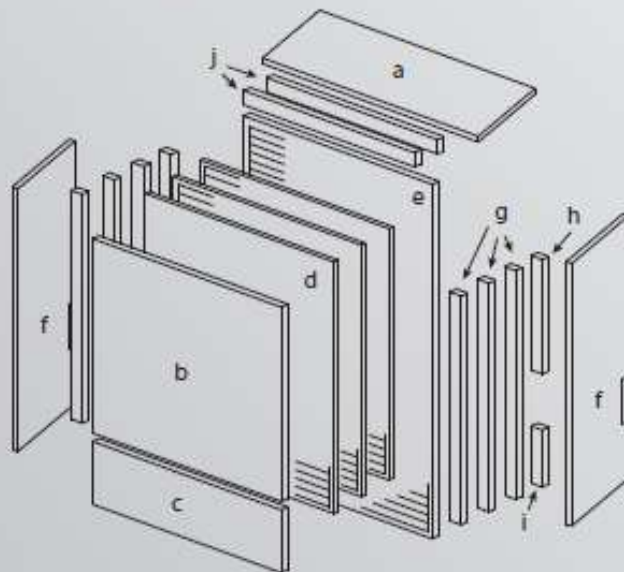
The area of observed foraging is not subject to active cut and/or burning prescriptions; the golf course can respect a broader “rough” of grass, with a maintenance timing window so birds continue to forage.

Appendix E

BAT BOX DESIGN FOR EASTERN PARCEL LIMIT FOREST EDGE (LOTS 1-4)

Four-chamber Bat Nursery

This house will accommodate a larger colony of bats or act as a nursery for mother bats and their offspring.



Materials

1/4 sheet of 1/2" plywood (outdoor grade)
 1/4 sheet of 3/8" plywood (outdoor grade)
 1" x 6" x 8" board
 exterior-grade screws, 1 3/8"
 exterior-grade screws, 1 1/4"
 exterior-grade screws, 1"
 latex caulk
 water-based, exterior-grade primer
 water-based, exterior-grade paint/stain
 black asphalt shingles
 roofing nails, 7/8"

Assembly

1. Cut the plywood and board according to the directions on the opposite page. All dimensions are in inches.
2. Roughen the interior surfaces (b,d,e) by cutting shallow, horizontal grooves approximately 1/2-1/4" apart.
3. Apply caulking and screw the side pieces (f) to the uppermost sides of the backboard (a), using 1 3/8" screws.
4. Using 1" screws, attach the 5" (i) and 10" (h) spacers to the backboard as seen in the side view on the opposite page. Do not block the vents in the side pieces (f).

APPENDIX F

Photo Diary of Structure Assessment

Barn Swallow, Chimney Swift, Bat Inspections



Barn inspection



Barn exterior



Outbuildings



Exterior Eave Inspection

The rare Little Myotis bat for instance can readily fit under loose eave and soffit trim, thus the search was thorough to ensure no colony was present.



Interior inspection of attics