

REDLINE REVISION to APRIL 8 2021  
to the previously submitted

DRAFT PLAN OF SUBDIVISION OF  
PART OF LOTS 4 AND 14 OF  
JUDGE'S PLAN 541  
GEOGRAPHIC TOWNSHIP OF ST. VINCENT  
MUNICIPALITY OF MEAFORD  
COUNTY OF GREY

SCALE 1 : 750  
0 10 20 30 40 50 75 METRES

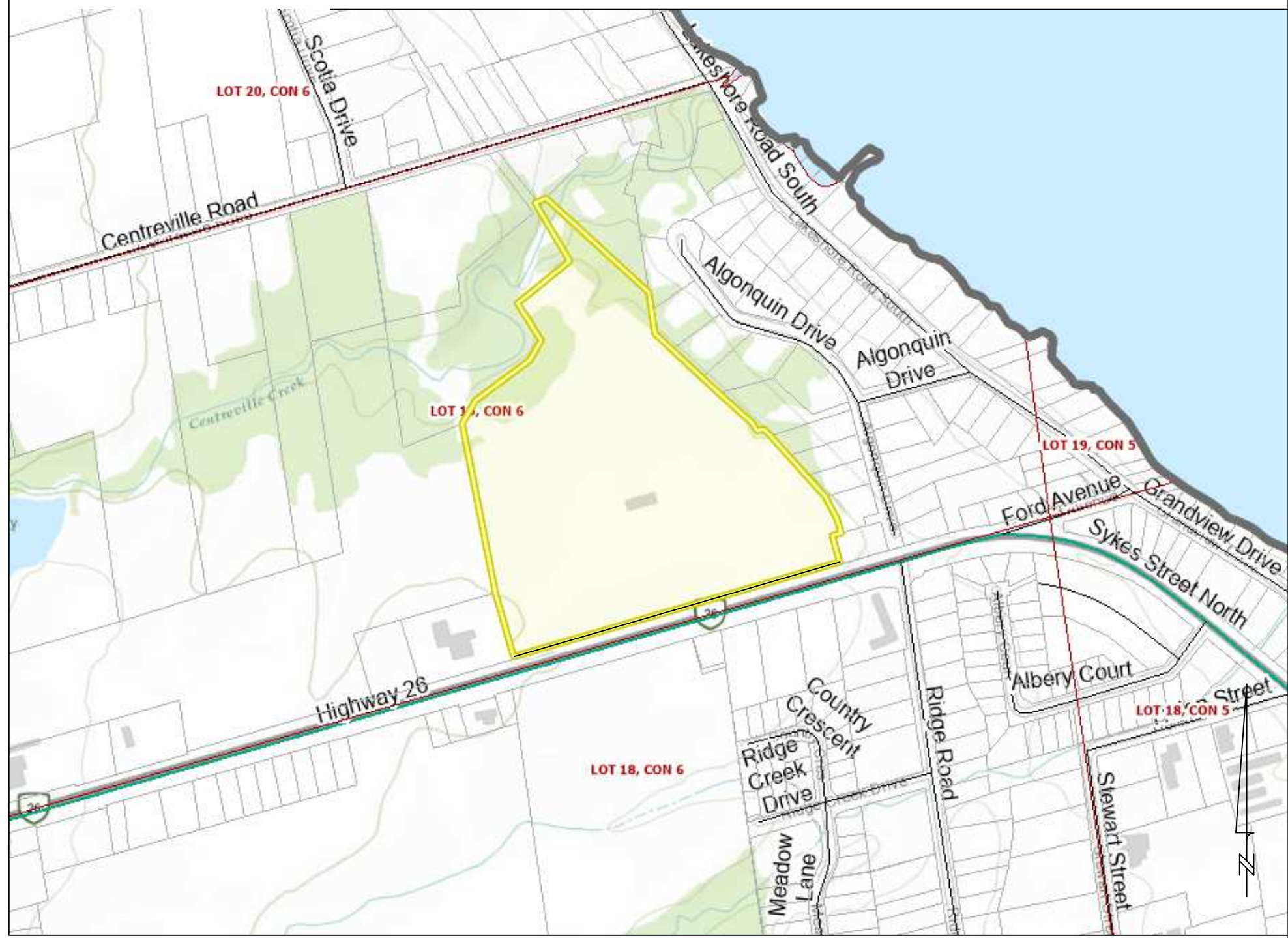
METRIC  
DISTANCES AND COORDINATES SHOWN ON THIS PLAN ARE  
IN METRES AND CAN BE CONVERTED TO FEET BY DIVIDING  
BY 0.3048.

PLAN CONTENTS

SECTION 51(17) OF THE PLANNING ACT

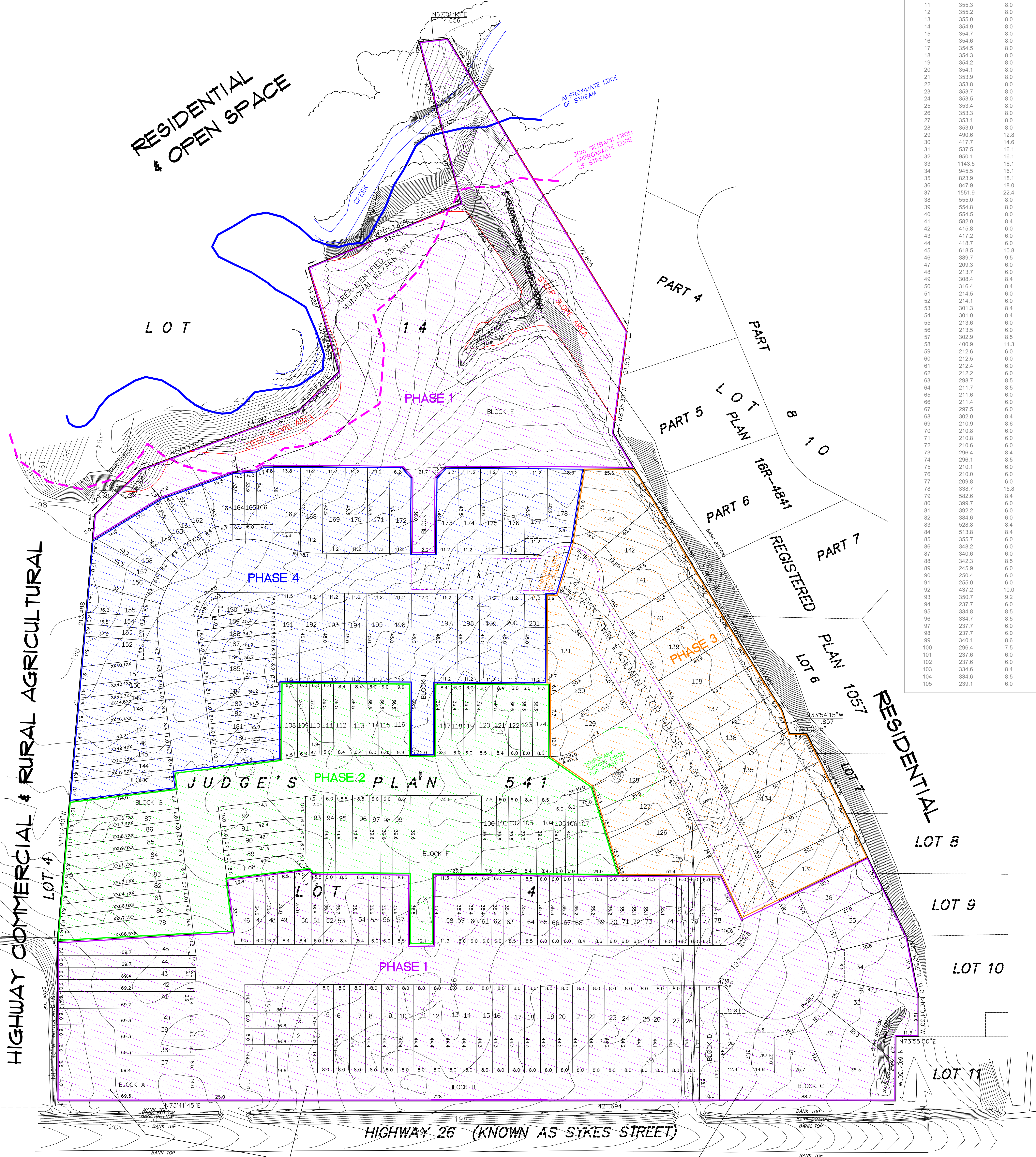
- A. BOUNDARY CERTIFICATION IS SET OUT BELOW  
B. LOCATION OF HIGHWAY IS SHOWN HEREON  
C. AS SHOWN HEREON  
D. THE PURPOSE OF THE PROPOSED LOTS IS RESIDENTIAL  
E. THE USE OF ADJOINING LANDS IS SHOWN HEREON  
F. LAYOUT AND DIMENSIONS OF PROPOSED LOTS ARE SHOWN HEREON  
G. EXISTING STRUCTURES ARE SHOWN HEREON  
H. MUNICIPAL WATER  
I. SOIL IS SANDY LOAM AND CLAY  
J. CONTOURS ARE SHOWN HEREON  
K. MUNICIPAL SERVICES - WATER & SEWER  
L. NO EXISTING EASEMENTS & RIGHTS OF WAY

KEY PLAN



NTS

LOT/BLOCK	AREA (SQ.M.)	FRONTAGE (M)	LOT/BLOCK	AREA (SQ.M.)	FRONTAGE (M)
1	524.1	27.9	108	244.9	9.0
2	292.9	8.0	107	645.9	10.0
3	293.2	8.0	108	323.6	8.5
4	522.4	14.3	109	224.2	6.0
5	356.1	8.0	110	219.9	6.0
6	356.0	8.0	111	218.8	6.0
7	355.8	8.0	112	308.2	8.4
8	355.7	8.0	113	308.2	8.4
9	355.6	8.0	114	218.8	6.0
10	355.4	8.0	115	218.8	6.0
11	355.3	8.0	116	308.2	8.4
12	355.2	8.0	117	308.2	8.4
13	355.0	8.0	118	218.8	6.0
14	354.9	8.0	119	218.8	6.0
15	354.7	8.0	120	308.2	8.4
16	354.6	8.0	121	308.2	8.4
17	354.5	8.0	122	218.8	6.0
18	354.3	8.0	123	218.8	6.0
19	354.2	8.0	124	308.0	8.5
20	354.1	8.0	125	700.0	26.6
21	353.9	8.0	126	663.9	15.0
22	353.8	8.0	127	623.8	15.0
23	353.7	8.0	128	538.8	16.1
24	353.5	8.0	129	804.8	38.4
25	353.4	8.0	130	529.1	15.0
26	353.3	8.0	131	646.9	15.0
27	353.1	8.0	132	905.7	18.0
28	353.0	8.0	133	904.0	18.0
29	490.6	12.8	134	902.3	18.0
30	417.7	14.8	135	989.5	18.0
31	537.5	16.1	136	800.4	18.0
32	890.1	16.1	137	807.8	18.0
33	1143.5	16.1	138	807.8	18.0
34	945.5	16.1	139	807.9	18.0
35	823.9	16.1	140	812.5	18.0
36	947.9	16.0	141	840.5	18.0
37	1551.9	22.4	142	786.4	17.5
38	555.0	8.0	143	1180.0	19.6
39	554.8	8.0	144	307.8	6.0
40	554.6	8.0	145	300.3	6.0
41	582.0	8.4	146	292.7	6.0
42	415.8	6.0	147	399.4	8.4
43	417.2	6.0	148	384.4	8.4
44	418.7	6.0	149	263.9	6.0
45	618.5	10.8	150	256.3	6.0
46	389.7	9.5	151	392.0	9.5
47	299.3	6.0	152	456.8	9.6
48	213.7	6.0	153	221.9	6.0
49	308.4	8.4	154	218.0	6.0
50	316.4	8.4	155	394.0	10.0
51	214.5	6.0	156	455.0	8.6
52	214.1	6.0	157	260.9	6.0
53	301.3	8.4	158	439.3	8.6
54	301.0	8.4	159	404.8	8.6
55	213.6	6.0	160	199.1	6.0
56	213.5	6.0	161	195.5	6.0
57	302.9	8.5	162	328.9	8.6
58	400.9	11.3	163	359.3	8.7
59	212.6	6.0	164	203.0	6.0
60	212.5	6.0	165	204.9	6.0
61	212.4	6.0	166	314.3	8.5
62	212.2	6.0	167	565.5	13.8
63	298.7	8.5	168	485.0	11.2
64	211.7	8.5	169	487.7	11.2
65	211.6	6.0	170	487.7	11.2
66	211.4	6.0	171	487.7	11.2
67	297.5	6.0	172	473.5	11.2
68	302.0	8.4	173	474.9	11.2
69	210.9	8.6	174	487.7	11.2
70	210.8	6.0	175	487.7	11.2
71	210.8	6.0	176	487.7	11.2
72	210.6	6.0	177	480.7	11.2
73	296.4	8.4	178	589.6	13.8
74	296.1	8.5	179	345.6	10.0
75	210.1	6.0	180	213.4	6.0
76	210.0	6.0	181	218.0	6.0
77	209.8	6.0	182	222.5	6.0
78	338.7	15.8	183	227.0	6.0
79	582.6	8.4	184	318.9	8.9
80	399.7	6.0	185	333.5	8.9
81	392.2	6.0	186	231.3	6.0
82	384.6	6.0	187	235.9	6.0
83	528.8	8.4	188	240.4	6.0
84	513.8	8.4	189	242.1	6.0
85	355.7	6.0	190	388.4	11.9
86	348.2	6.0	191	517.4	11.5
87	340.6	6.0	192	504.0	11.2
88	342.3	8.5	193	504.0	11.2
89	245.9	6.0	194	504.0	11.2
90	250.4	6.0	195	504.0	11.2
91	255.0	6.0	196	504.0	11.2
92	437.2	10.0	197	504.0	11.2
93	350.7	9.2	198	504.0	11.2
94	237.7	6.0	199	504.0	11.2
95	334.8	8.5	200	504.0	11.2
96	334.7	8.5	201	504.0	11.2
97	237.7	6.0	BLOCK A	972.3	
98	237.7	6.0	BLOCK B	3202.0	
99	340.1	8.6	BLOCK C	1241.8	
100	296.4	7.5	BLOCK D	578.8	10.0
101	237.6	6.0	BLOCK E	2,325.8	12.0
102	237.6	6.0	BLOCK F	1848.6	12.0
103	334.6	8.4	BLOCK G	559.9	8.4
104	334.6	8.5	BLOCK H	529.9	8.4
105	239.1	6.0	BLOCK I	977.7	12.0



SURVEYOR'S CERTIFICATE

I HEREBY CERTIFY THAT THE BOUNDARIES OF THE LAND IN THE SUBDIVISION  
(SHOWN IN HEAVY OUTLINE) AND THEIR RELATIONSHIP TO THE ADJACENT  
LANDS ARE CORRECTLY SHOWN ON THIS PLAN.

APRIL 8, 2021  
DATED

*Chad*  
C. D. BUNKER  
ONTARIO LAND SURVEYOR

OWNER'S CERTIFICATE

M1 DEVELOPMENT LIMITED, BEING THE  
REGISTERED OWNERS OF THE SUBJECT LANDS, HEREBY SUBMIT A DRAFT PLAN  
OF THE SUBDIVISION FOR APPROVAL.

APRIL 8, 2021  
DATED

*Peter*  
PETER CHIU  
I HAVE THE AUTHORITY TO BIND THE CORPORATION

T. A. BUNKER SURVEYING LTD.  
150 JOHN ST. N. GRAVENHURST, ONTARIO. P. O. BOX 1180, PIP 1V4  
705-687-5883  
surveys@BunkerSurveying.ca  
www.BunkerSurveying.ca  
FILE 4979