



STAGE 1-2 ARCHAEOLOGICAL PROPERTY ASSESSMENT: SUPPLEMENTARY DOCUMENTATION

LICENSEE INFORMATION:

Contact Information:

Michael B. Henry CD BA FRAI FRSA
Marilyn E. Cornies BA CAHP
Southwestern District Office
237 Sanders Street East
Exeter, ON N0M 1S1
Phone: (519) 432-4435
Email: mhenry@amick.ca
www.amick.ca

Licensee:

Ontario Archaeology Licence:

Michael B. Henry CD BA FRAI FRSA
P058

PROJECT INFORMATION:

Corporate Project Number:

2021-579

MCM Project Number:

P058-2103-2022

Investigation Type:

Stage 1-2 Archaeological Property Assessment

Project Name:

Grey Road 4, Durham

Project Location:

Park Lots 9-12, Town Plot of Durham, Part of Lot
24, Concession 1 West of the Owen Sound Road
(Geographic Township of Bentinck), Municipality
of West Grey, County of Grey.

Project Designation Number:

Not Currently Available

MCM FILING INFORMATION:

Site Record/Update Form(s):

N/A

Date of Report Filing:

03 April 2023

TYPE OF REPORT:

ORIGINAL

PROJECT REPORT SUPPLEMENTARY DOCUMENTATION

*ORIGINAL 03 April 2023 Stage 1-2 Archaeological Assessment of Grey Road No. 4/Durham Road West, Durham, Park Lots 9-12, Town Plot of Durham, Part of Lot 24, Concession 1 West of the Owen Sound Road (Geographic Township of Bentinck), Municipality of West Grey, County of Grey.
(AMICK File #2021-579/MCM File #P058-2103-2022)*

GPS COORDINATE DATA

GPS Receiver:

Specifications Juniper Archer Longbow

Form-factor	Ultra-rugged remote positioning GPS handheld
CPU Speed	Intel PXA270/520 MHz
OS	Windows Mobile 6.1
RAM/ROM	128MB RAM/512MB Flash
Card slots	SD/SDHC Card with SDIO support
Interface	RS232 9-pin serial
GPS	2-5 meter (S/A off); 2 meters (WAAS)
Wireless	Archer: Bluetooth Class II; optional Wi-Fi and wireless modems via cards Longbow/ikeGPS adds: 3 or 5 megapixel camera, DGPS, eCompass, laser rangefinder

Project Datum – Hydro Box

Project datum is a hydro pole along the north side of Grey Road No. 4/Durham Road West near the southeast corner of the study area.

Latitude/Longitude

44.18137, -80.82896

UTM Grid reference

17N 513660.336 Easting, 4891811.750 Northing

NAD 27

County Road 4 (BbHe-13) Site Limits and GPS Coordinates

UTM Grid reference 17N

TP	Latitude	Longitude	Quantity
TP10	44.18338412	-80.83214447	1
TP12 R2.5 E2.5S	44.18318925	-80.83216935	1
TP14 R2.5E	44.18317002	-80.83216298	1
TP14 R2.5W	44.18315752	-80.832223	1
TP14 R2.5W 2.5S	44.18314117	-80.83221361	1
TP15 R2.5E 2.5W	44.18307577	-80.8322696	1
TP15 R2.5N	44.18316906	-80.83227161	1
TP16 R2.5N	44.18311977	-80.83231822	1
TP16 R2.5S	44.18306952	-80.83230581	1
TP22 R2.5N	44.1831491	-80.83239667	1
TP23	44.18317916	-80.83240706	1
TP23 R2.5N	44.18320464	-80.83241846	1

PROJECT REPORT SUPPLEMENTARY DOCUMENTATION

*ORIGINAL 03 April 2023 Stage 1-2 Archaeological Assessment of Grey Road No. 4/Durham Road West, Durham, Park Lots 9-12, Town Plot of Durham, Part of Lot 24, Concession 1 West of the Owen Sound Road (Geographic Township of Bentinck), Municipality of West Grey, County of Grey.
(AMICK File #2021-579/MCM File #P058-2103-2022)*

TP	Latitude	Longitude	Quantity
TP24 R2.5E 2.5N	44.18326547	-80.83240606	1
TP3 R2.5E	44.18390189	-80.8320976	1
TP4 R2.5W	44.18389468	-80.83222233	1
TP6	44.18368045	-80.83199702	1
TP6 2.5S	44.18365088	-80.83197758	1
TP7	44.18375763	-80.83197422	1
TP7 R2.5E	44.18377182	-80.83193533	1
TP9 R2.5 E2.5S	44.18385236	-80.83215628	1
TP10 R2.5E	44.18339242	-80.832108	2
TP12 R2.5S	44.18318372	-80.83219852	2
TP13	44.18321618	-80.8321546	2
TP14 R2.5 E2.5S	44.18315199	-80.83215594	2
TP15 R2.5W 2.5N	44.18316281	-80.83230615	2
TP2 R2.5E	44.18381509	-80.83204698	2
TP20	44.18304668	-80.83229776	2
TP22 R2.5S	44.18310751	-80.83237991	2
TP23 R2.5E 2.5N	44.18321113	-80.83238494	2
TP24	44.18323614	-80.83242886	2
TP3 R2.5 E2.5S	44.18387688	-80.83208285	2
TP4 R2.5E	44.18391535	-80.8321546	2
TP5	44.18379033	-80.8322924	2
TP6 R2.5N	44.18370714	-80.83201647	2
TP6 R2.5W	44.18366627	-80.83203591	2
TP6 R2.5W 2.5N	44.18369224	-80.83205502	2
TP11 R2.5N	44.18327749	-80.83223004	3
TP11 R2.5W	44.18324744	-80.83225988	3
TP14	44.18316401	-80.83219148	3
TP14 R2.5W 2.5N	44.18317723	-80.83222903	3
TP15	44.18314862	-80.83226725	3
TP16	44.18309092	-80.83231319	3
TP17	44.18309813	-80.83224982	3
TP17 R2.5E 2.5S	44.18308803	-80.83221629	3
TP18 R2.5W	44.18305245	-80.83226524	3
TP19	44.18306663	-80.83217673	3
TP2 R2.5E 2.5S	44.18378504	-80.83202854	3
TP22	44.18312891	-80.83238862	3
TP23 R2.5E	44.183183	-80.83237454	3
TP24 R2.5W	44.18323037	-80.83245635	3

PROJECT REPORT SUPPLEMENTARY DOCUMENTATION

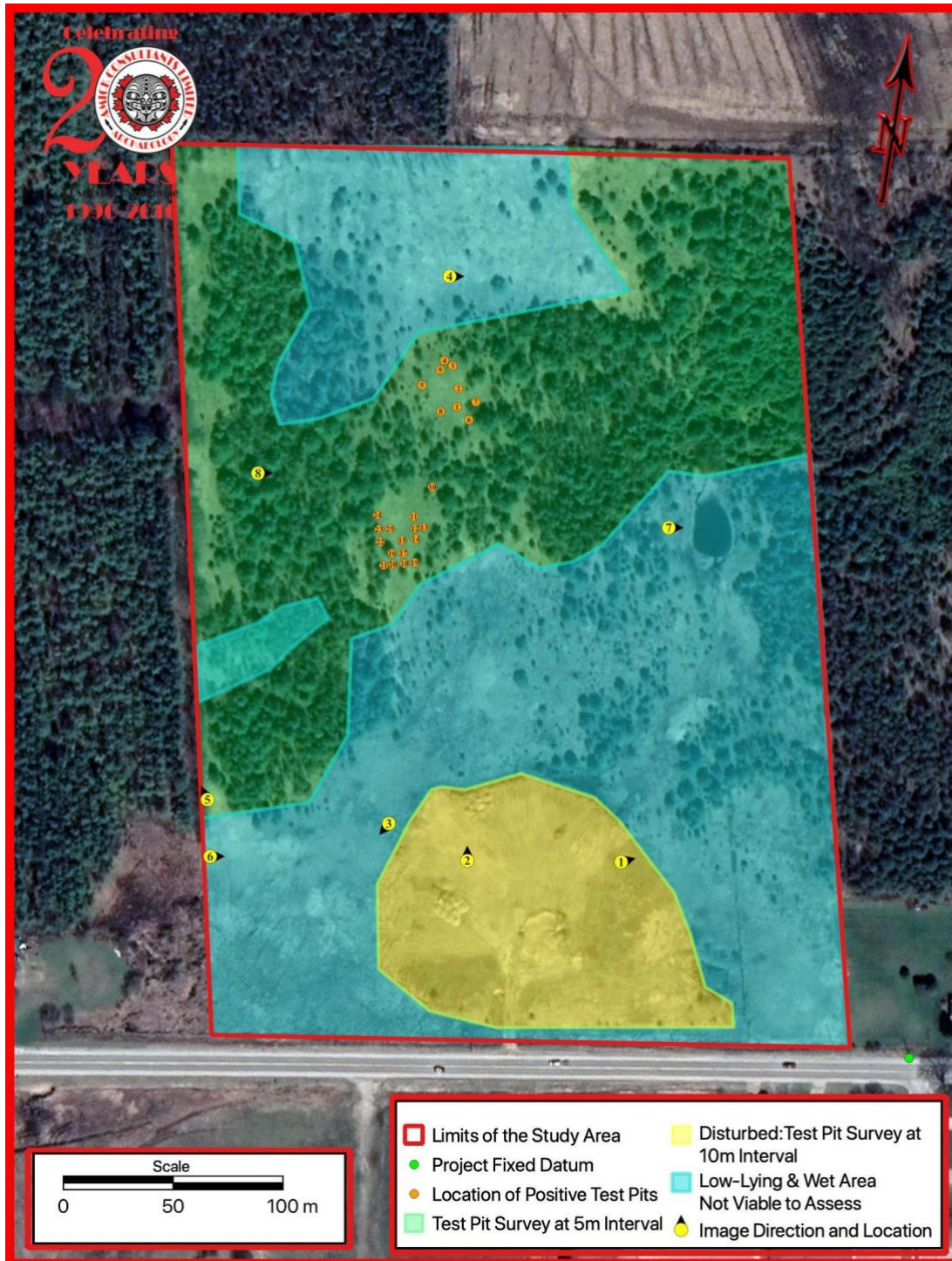
*ORIGINAL 03 April 2023 Stage 1-2 Archaeological Assessment of Grey Road No. 4/Durham Road West, Durham, Park Lots 9-12, Town Plot of Durham, Part of Lot 24, Concession 1 West of the Owen Sound Road (Geographic Township of Bentinck), Municipality of West Grey, County of Grey.
(AMICK File #2021-579/MCM File #P058-2103-2022)*

TP	Latitude	Longitude	Quantity
TP3	44.18388867	-80.83213717	3
TP8	44.18369656	-80.83216332	3
TP8 R2.5N	44.18373022	-80.83218846	3
TP9	44.18386462	-80.83220355	3
TP1 R2.5W	44.18371147	-80.83211571	4
TP1 R2.5W 2.5N	44.18374609	-80.83213918	4
TP12	44.18320584	-80.83220556	4
TP15 R2.5S	44.18312939	-80.83225921	4
TP18	44.18305726	-80.83223473	4
TP2	44.18380134	-80.83208385	4
TP2 R2.5W 2.5N	44.18382014	-80.83213851	4
TP24 R2.5W 2.5N	44.18325393	-80.83246339	4
TP1 R2.5 W2.5S	44.18367973	-80.83209459	5
TP11	44.18325273	-80.83222333	5
TP2 R2.5N	44.1838312	-80.83210465	5
TP2 R2.5S	44.18377278	-80.83206341	5
TP22 R2.5 E2.5N	44.18315343	-80.83236214	5
TP25	44.18318853	-80.83234504	5
TP6 2.5W 2.5S	44.18363766	-80.83201513	5
TP8 R2.5S	44.18366386	-80.83214488	6
TP18 R2.5N	44.18309573	-80.83218746	7
TP4	44.18390526	-80.83218712	8
TP2 R2.5W 2.5S	44.18376076	-80.83209962	9
TP1	44.18372421	-80.83207514	10
TP9 2.5E	44.18387688	-80.83216935	11
TP2 R2.5W	44.18379009	-80.8321204	17
TP 21	44.18303634	-80.8323494	0

PROJECT REPORT SUPPLEMENTARY DOCUMENTATION

*ORIGINAL 03 April 2023 Stage 1-2 Archaeological Assessment of Grey Road No. 4/Durham Road West, Durham, Park Lots 9-12, Town Plot of Durham, Part of Lot 24, Concession 1 West of the Owen Sound Road (Geographic Township of Bentinck), Municipality of West Grey, County of Grey.
(AMICK File #2021-579/MCM File #P058-2103-2022)*

SUPPLEMENTARY MAPS



**MAP 6 AERIAL DEMONSTRATING POSITIVE TEST PIT LOCATIONS
ENCOUNTERED DURING STAGE 2 ASSESSMENT (GOOGLE 2020)**

*ORIGINAL 03 April 2023 Stage 1-2 Archaeological Assessment of Grey Road No. 4/Durham Road West, Durham, Park Lots 9-12, Town Plot of Durham, Part of Lot 24, Concession 1 West of the Owen Sound Road (Geographic Township of Bentinck), Municipality of West Grey, County of Grey.
(AMICK File #2021-579/MCM File #P058-2103-2022)*

PROJECT REPORT SUPPLEMENTARY DOCUMENTATION

*ORIGINAL 03 April 2023 Stage 1-2 Archaeological Assessment of Grey Road No. 4/Durham Road West, Durham, Park Lots 9-12, Town Plot of Durham, Part of Lot 24, Concession 1 West of the Owen Sound Road (Geographic Township of Bentinck), Municipality of West Grey, County of Grey.
(AMICK File #2021-579/MCM File #P058-2103-2022)*

