



1.0 PROJECT REPORT COVER PAGE

LICENSEE INFORMATION:

Contact Information:

Michael B. Henry CD BA FRAI FRSA
Southwestern District Office
553 Dufferin Avenue
London, ON N6B 2A5
Phone: (419) 432-4435
Email: mhenry@amick.ca
www.amick.ca

Licensee:

Ontario Archaeology Licence:

Michael B. Henry CD BA FRAI FRSA
P058

PROJECT INFORMATION:

Corporate Project Number:

2020115

MHSTCI Project Number:

P058-1887-2020

Investigation Type:

Stage 3 Site-specific Assessment

Project Name:

Loon 1 (BdHd-23) Site

Project Location:

206105 Highway 26,
Part of Lot 19, Concession 6 (Geographic Township of
St. Vincent, County of Grey), Municipality of Meaford,
County of Grey

Project Designation Number:

Not Currently Available

MHSTCI FILING INFORMATION:

Site Record/Update Form(s):

Loon 1 (BdHd-23) Site

Date of Report Filing:

31 August 2020

Type of Report:

ORIGINAL

2.0 EXECUTIVE SUMMARY

This report describes the results of the 2020 Stage 3 Site-specific Assessment of the Loon 1 (BdHd-23) Site within 206105 Highway 26, Part of Lot 19, Concession 6, (Geographic Township of St. Vincent, County of Grey), Municipality of Meaford, County of Grey, conducted by AMICK Consultants Limited. This study was conducted under Professional Archaeologist License #P058 issued to Michael Henry by the Minister of Heritage, Sport, Tourism and Culture Industries for the Province of Ontario. This assessment was undertaken as a requirement under the Planning Act (RSO 1990) and the Provincial Policy Statement (2020) in order to support a Draft Plan of Subdivision and companion Zoning By-law Amendment application as part of the pre-submission process. Within the land use planning and development context, Ontario Regulation 544/06 under the Planning Act (1990b) requires an evaluation of archaeological potential and, where applicable, an archaeological assessment report completed by an archaeologist licensed by the Ministry of Heritage, Sport, Tourism and Culture Industries (MHSTCI). Policy 2.6 of the Provincial Policy Statement (PPS 2020) addresses archaeological resources. All work was conducted in conformity with Ontario Ministry of Tourism and Culture (MTC) Standards and Guidelines for Consultant Archaeologists (MTC 2011), the Ontario Heritage Act (RSO 1990a).

AMICK Consultants Limited was engaged by the proponent to undertake a Stage 3 Site-Specific Assessment of the Loon 1 (BdHd-23) site, a historic Euro-Canadian archaeological site potentially affected by the proposed undertaking, and was granted permission to carry out archaeological fieldwork. An intensified pedestrian survey at 1 metre intervals and CSP was required, as it was not done as part of the Stage 2 Archaeological Assessment. There were 90 findspots throughout the CSP. The Stage 3 Assessment consisted of the excavation of 1 by 1 metre square test units on a 5 by 5 metre square grid; the grid squares are referred to by the intersection coordinates of their southwest corner. Each test unit was excavated stratigraphically by hand into the first 5 centimetres of subsoil. Depth varied between 17 and 51 centimeters. Each unit was examined for stratigraphy, cultural features, or evidence of fill, and all soil was screened through wire mesh of 6 millimetre width. All artifacts were retained and recorded by the corresponding grid unit designation. The soil stratigraphy ranged from a medium brown loamy sand overlaying a light orange grey loamy sand subsoil to a light brown loamy clay overlaying a light grey clay subsoil. A total of 88 test units, with an additional 22 test units amounting to 20% of the grid unit total in areas of interest or high artifact concentration, were hand-excavated on July 7, 9, 13-15, 20, and 21, 2020. All records, documentation, field notes, photographs and artifacts (as applicable) related to the conduct and findings of these investigations are held at the Lakelands District corporate offices of AMICK Consultants Limited until such time that they can be transferred to an agency or institution approved by the Ontario Ministry of Heritage, Sport, Tourism and Culture Industries (MHSTCI) on behalf of the government and citizens of Ontario.

STAGE 3 RECOMMENDATIONS:

The Stage 3 Site-specific Assessment of the Loon 1 (Bd-Hd-23) site resulted in the discovery of 2526 artifacts. Based on these findings, the following recommendations are made:

The Stage 3 Site-specific Assessment of the Loon 1 (BdHd-23) site indicates that it has no additional cultural heritage value or interest (CHVI) and the site has now been sufficiently documented. The report recommends that Stage 4 mitigation of impacts is not required for the Loon 1 (BdHd-23) site.

3.0 TABLE OF CONTENTS

1.0 PROJECT REPORT COVER PAGE.....	1
2.0 EXECUTIVE SUMMARY	2
4.0 PROJECT PERSONNEL.....	4
5.0 PROJECT CONTEXT	5
6.0 FIELD WORK METHODS AND WEATHER CONDITIONS	17
7.0 RECORD OF FINDS	19
8.0 ANALYSIS AND CONCLUSIONS.....	26
9.0 RECOMMENDATIONS.....	27
10.0 ADVICE ON COMPLIANCE WITH LEGISLATION	29
11.0 BIBLIOGRAPHY AND SOURCES.....	30
12.0 MAPS.....	32
13.0 IMAGES	37
14.0 APPENDIX A- ARTIFACT CATALOGUE.....	42

4.0 PROJECT PERSONNEL

AMICK CONSULTANTS LIMITED PARTNERS

Michael Henry (MHSTCI Professional Archaeologist Licence #P058)

Marilyn Cornies (MHSTCI Professional Archaeologist Licence #P038)

PROJECT COORDINATOR

Michael Henry (MHSTCI Professional Archaeologist Licence #P058)

PROJECT LICENSEE ARCHAEOLOGIST

Michael Henry (MHSTCI Professional Archaeologist Licence #P058)

PROJECT FIELD DIRECTORS

Katrina Mason (MHSTCI Applied Research Archaeologist Licence #R1226)

PROJECT FIELD ASSISTANTS

Kelly Tremblay Jamie Lilly
Garrett Gribbin Ryan Crowe
Jessica Watson

PROJECT REPORT PREPARATION

Katrina Mason (MHSTCI Applied Research Archaeologist Licence #R1226)

PROJECT HISTORIC ARTIFACT ANALYSES

Marilyn Cornies (MHSTCI Professional Archaeologist Licence #P038)

Katrina Mason (MHSTCI Applied Research Archaeologist Licence #R1226)

PROJECT GRAPHICS

Nick Kaluzny

PROJECT PHOTOGRAPHY

Katrina Mason (MHSTCI Applied Research Archaeologist Licence #R1226)

5.0 PROJECT CONTEXT

5.1 DEVELOPMENT CONTEXT

This report describes the results of the 2020 Stage 3 Site-specific Assessment of the Loon 1 (BdHd-23) Site within 206105 Highway 26, Part of Lot 19, Concession 6, (Geographic Township of St. Vincent, County of Grey), Municipality of Meaford, County of Grey, conducted by AMICK Consultants Limited. This study was conducted under Professional Archaeologist License #P058 issued to Michael Henry by the Minister of Heritage, Sport, Tourism and Culture Industries for the Province of Ontario. This assessment was undertaken as a requirement under the Planning Act (RSO 1990) and the Provincial Policy Statement (2020) in order to support a Draft Plan of Subdivision and companion Zoning By-law Amendment application as part of the pre-submission process. Within the land use planning and development context, Ontario Regulation 544/06 under the Planning Act (1990b) requires an evaluation of archaeological potential and, where applicable, an archaeological assessment report completed by an archaeologist licensed by the Ministry of Heritage, Sport, Tourism and Culture Industries (MHSTCI). Policy 2.6 of the Provincial Policy Statement (PPS 2020) addresses archaeological resources. All work was conducted in conformity with Ontario Ministry of Tourism and Culture (MTC) Standards and Guidelines for Consultant Archaeologists (MTC 2011), the Ontario Heritage Act (RSO 1990a).

AMICK Consultants Limited was engaged by the proponent to undertake a Stage 3 Site-Specific Assessment of the Loon 1 (BdHd-23) site, a historic Euro-Canadian archaeological site potentially affected by the proposed undertaking, and was granted permission to carry out archaeological fieldwork. An intensified pedestrian survey at 1 metre intervals and CSP was required, as it was not done as part of the Stage 2 Archaeological Assessment. There were 90 findspots throughout the CSP. The Stage 3 Assessment consisted of the excavation of 1 by 1 metre square test units on a 5 by 5 metre square grid; the grid squares are referred to by the intersection coordinates of their southwest corner. Each test unit was excavated stratigraphically by hand into the first 5 centimetres of subsoil. Depth varied between 17 and 51 centimeters. Each unit was examined for stratigraphy, cultural features, or evidence of fill, and all soil was screened through wire mesh of 6 millimetre width. All artifacts were retained and recorded by the corresponding grid unit designation. The soil stratigraphy ranged from a medium brown loamy sand overlaying a light orange grey loamy sand subsoil to a light brown loamy clay overlaying a light grey clay subsoil. A total of 88 test units, with an additional 22 test units amounting to 20% of the grid unit total in areas of interest or high artifact concentration, were hand-excavated on July 7, 9, 13-15, 20, and 21, 2020. All records, documentation, field notes, photographs and artifacts (as applicable) related to the conduct and findings of these investigations are held at the Lakelands District corporate offices of AMICK Consultants Limited until such time that they can be transferred to an agency or institution approved by the Ontario Ministry of Heritage, Sport, Tourism and Culture Industries (MHSTCI) on behalf of the government and citizens of Ontario.

The proposed development of the study area includes 247 units (there are ten proposed townhouses in two blocks of five that are not part of the unit count of 237), a road and emergency access, storm water management facility and pond outlet easement. A preliminary plan of the proposed development has been submitted together with this report to MHSTCI for review and reproduced within this report as Map 3.

5.2 HISTORICAL CONTEXT

5.2.1 PRE-CONTACT LAND-USE OUTLINE

What follows is an outline of Aboriginal occupation in the area during the Pre-Contact Era from the earliest known period, about 9000 B.C. up to approximately 1650 AD.

5.2.1.1 PALAEO-INDIAN PERIOD (APPROXIMATELY 9000-7500 B.C.)

North of Lake Ontario, evidence suggests that early occupation began around 9000 B.C. People probably began to move into this area as the glaciers retreated and glacial lake levels began to recede. The early occupation of the area probably occurred in conjunction with environmental conditions that would be comparable to modern Sub-Arctic conditions. Due to the great antiquity of these sites, and the relatively small populations likely involved, evidence of these early inhabitants is sparse and generally limited to tools produced from stone or to by-products of the manufacture of these implements.

5.2.1.2 ARCHAIC PERIOD (APPROXIMATELY 8000-1000 B.C.)

By about 8000 B.C. the gradual transition from a post glacial tundra-like environment to an essentially modern environment was largely complete. Prior to European clearance of the landscape for timber and cultivation, the area was characterized by forest. The Archaic Period is the longest and the most apparently stable of the cultural periods identified through archaeology. The Archaic Period is divided into the Early, Middle and Late Sub-Periods, each represented by specific styles in projectile point manufacture. Many more sites of this period are found throughout Ontario, than of the Palaeo-Indian Period. This is probably a reflection of two factors: the longer period of time reflected in these sites, and a greater population density. The greater population was likely the result of a more diversified subsistence strategy carried out in an environment offering a greater variety of abundant resources. (Smith 2002:58-59)

Current interpretations suggest that the Archaic Period populations followed a seasonal cycle of resource exploitation. Although similar in concept to the practices speculated for the big game hunters of the Palaeo-Indian Period, the Archaic populations utilized a much broader range of resources, particularly with respect to plants. It is suggested that in the spring and early summer, bands would gather at the mouths of rivers and at rapids to take advantage of fish spawning runs. Later in the summer and into the fall season, smaller groups would move to areas of wetlands to harvest nuts and wild rice. During the winter, they would break into yet smaller groups probably based on the nuclear family and perhaps some additional

relatives to move into the interior for hunting. The result of such practices would be to create a distribution of sites across much of the landscape. (Smith 2002: 59-60).

The material culture of this period is much more extensive than that of the Palaeo-Indians. Stylistic changes between Sub-Periods and cultural groups are apparent, although the overall quality in production of chipped lithic tools seems to decline. This period sees the introduction of ground stone technology in the form of celts (axes and adzes), manos and metates for grinding nuts and fibres, and decorative items like gorgets, pendants, birdstones, and bannerstones. Bone tools are also evident from this time period. Their presence may be a result of better preservation from these more recent sites rather than a lack of such items in earlier occupations. In addition, copper and exotic chert types appear during the period and are indicative of extensive trading (Smith 2002: 58-59).

5.2.1.3 WOODLAND PERIOD (APPROXIMATELY 1000 B.C.-1650 A.D.)

The primary difference in archaeological assemblages that differentiates the beginning of the Woodland Period from the Archaic Period is the introduction of ceramics to Ontario populations. This division is probably not a reflection of any substantive cultural changes, as the earliest sites of this period seem to be in all other respects a continuation of the Archaic mode of life with ceramics added as a novel technology. The seasonally based system of resource exploitation and associated population mobility persists for at least 1500 years into the Woodland Period. (Smith 2002: 61-62)

The Early Woodland Sub-Period dates from about 1000-400 B.C. Many of the artifacts from this time are similar to the late Archaic and suggest a direct cultural continuity between these two temporal divisions. The introduction of pottery represents an entirely new technology that was probably acquired through contact with more southerly populations from which it likely originates. (Smith 2002:62)

The Middle Woodland Sub-Period dates from about 400 B.C.-800 A.D. Within the region including the study area, a complex emerged at this time termed "Point Peninsula". Point Peninsula pottery reflects a greater sophistication in pottery manufacture compared with the earlier industry. The paste and temper of the new pottery is finer and new decorative techniques such as dentate and pseudo-scallop stamping appear. There is a noted Hopewellian influence in southern Ontario populations at this time. Hopewell influences from south of the Great Lakes include a widespread trade in exotic materials and the presence of distinct Hopewell style artifacts such as platform pipes, copper or silver panpipe covers and shark's teeth. The populations of the Middle Woodland participated in a trade network that extended well beyond the Great Lakes Region.

The Late Woodland Sub-Period dates from about 500-1650 A.D. The Late Woodland includes four separate phases: Princess Point, Early Ontario Iroquoian, Middle Ontario Iroquoian and Late Ontario Iroquoian.

The Princess Point phase dates to approximately 500-1000 A.D. Pottery of this phase is distinguished from earlier technology in that it is produced by the paddle method instead of coil and the decoration is characterized by the cord wrapped stick technique. Ceramic smoking pipes appear at this time in noticeable quantities. Princess Point sites cluster along major stream valleys and wetland areas. Maize cultivation is introduced by these people to Ontario. These people were not fully committed to horticulture and seemed to be experimenting with maize production. They generally adhere to the seasonal pattern of occupation practiced by earlier occupations, perhaps staying at certain locales repeatedly and for a larger portion of each year (Smith 2002: 65-66)

The Early Ontario Iroquoian stage dates to approximately 950-1050 A.D. This stage marks the beginning of a cultural development that led to the historically documented Ontario Iroquoian groups that were first contacted by Europeans during the early 1600s (Petun, Neutral, and Huron). At this stage formal semi-sedentary villages emerge. The Early stage of this cultural development is divided into two cultural groups in southern Ontario. The areas occupied by each being roughly divided by the Niagara Escarpment. To the west were located the Glen Meyer populations, and to the east were situated the Pickering people (Smith 2002: 67).

The Middle Ontario Iroquoian stage dates to approximately 1300-1400 A.D. This stage is divided into two sub-stages. The first is the Uren sub-stage lasting from approximately 1300-1350 A.D. The second of the two sub-stages is known as the Middleport sub-stage lasting from roughly 1350-1400 A.D. Villages tend to be larger throughout this stage than formerly (Smith 2002: 67).

The Late Ontario Iroquoian stage dates to approximately 1400-1650 A.D. During this time the cultural divisions identified by early European explorers are under development and the geographic distribution of these groups within southern Ontario begins to be defined. In Grey County, prior to the arrival of European settlers, the Odawa and Petun people inhabited the area and traded beaver pelts (Garrad 2014). In 1639, the Mission of the Apostles was established (Garrad 2014: 20). The Petun people were forced to disperse due to the increase in raid from the Five Nation Iroquois, epidemics, and gradual worsening of environmental conditions. Like the Petun, the Odawa also dispersed in 1650 but returned a short time later (Garrad 1979: 29).

5.2.2 GENERAL HISTORICAL OUTLINE

The County of Grey was first established in 1852. Before the county was organized, the British referred to the entire area as “The Queen’s Bush”. Until 1852 this area was known for its dangerous travelling conditions for Euro-Canadians. The first townships within Grey County were originally called “Alta” and “Zero” which were quickly renamed Collingwood and St. Vincent respectively. During the colonization of the County, a quickly established network of trails and roads, in an addition to several natural harbours, provided easy access for settlers. However, due to the great distances involved and dangerous traveling conditions, the early settlers of this area relied heavily on First Nations to advise on

settlement area selection, crop planting, medicine and survival. From the start of colonization it was easy to use the numerous natural resources easily available in the area as a means to generate income. Typically fish, furs, minerals, and forestation were the initial main industries. By 1865 Grey County consisted of 16 Townships, 4 towns and 44 villages or post offices (Grey County 2010).

The Township of St. Vincent was originally called “Zero” (Marsh 1931: 53). St. Vincent was the first township to be settled in Grey County. By 1865, the township had a brick chapel, mills and schoolhouses, as well as five post offices (Marsh 1931: 53).

Map 2 is a facsimile segment from The Illustrated Historic Atlas of the County of Grey (Belden & Co 1880). Map 2 illustrates the location of the study area and environs as of 1880. The study area is shown not to belong to anyone but there are two sawmills in the northeast corner of Lot 19. Based on Smith’s Gazetteer of 1865 it is clear that people lived within the study area but they are not depicted on the map. This means that the owners likely did not pay to include their names. This demonstrates that the original property of which the study area is a part was settled by the time that the atlas data was compiled. Accordingly, it has been determined that there is potential for archaeological deposits related to early Post-Contact settlement within the study area. In addition, this map illustrates Centreville Creek running through the northernmost tip of the study area and a settlement road is depicted as adjacent to the study area to the north and south. The northern road is the current Centreville road and the southern road is the current Highway 26. The Loon 1 (BdHd-23) site itself is located in the southern portion of the study area. It is within 150 metres of Highway 26, 410 metres within Centreville Road, and within 300 metres of Centreville Creek and Georgian Bay.

It must be borne in mind that inclusion of names of property owners and depictions of structures and other features within properties on these maps were sold by subscription. Property owners paid to include information or details about their properties. While information included within these maps may provide information about the occupation of a property at a specific moment in time when the information was collected, the absence of such information does not necessarily indicate that the property was not occupied.

5.2.3 OUTLINE OF PROPERTY HISTORY

Based on research from the Abstract Land Index (onland.ca) and the 1865 Gazetteer on the history of the occupants of Lot 19, Concession 6, the following information was provided. The original lot was split into a north half, which was issued to Wilson Mallory in 1851, and the south half, which was issued to Elizabeth Mitts in 1835. The Crown Patent issued these lots (onland.ca).

The Smith’s Gazetteer indicates that Lot 19 was split into four and owned by Joseph Cox, John Chambers, Peter Fuller, and James Jarmin by the year 1865. Joseph Cox was a blacksmith and John Chambers was a bricklayer. Peter Fuller’s profession was not disclosed but Smith’s Gazetteer indicates that Peter and his wife severed the lot and sold bits off

between approximately 1853 and 1883. James Jarmin did not appear in the Land Registry Abstract Index. Lot 19 continued to be passed down through many families and subdivided until 1957 when it was entered into the Index.

5.2.4 CURRENT CONDITIONS

The present use of the study area is as a vacant lot. There are five buildings within the study area that consist of a house with attached garage, shed, a long outbuilding with signage indicating it as “Kennedy’s Garage”, another long outbuilding indicated as “Kennedy’s Car Shop”, and a small cabin. None of these structures are within the Loon 1 (BdHd-23) site but are within Lot 19. The study area contains within it agricultural lands and wooded area. The Loon 1 (BdHd-23) site is located within the two southernmost fields and protrudes into the lawn north of the house. The study area is roughly 13.8 hectares in area. The Loon 1 (BdHd-23) site is roughly 125 metres east to west by 91 metres north to south, although it should be noted that the site is interrupted in the middle by the house with attached garage and small shed and therefore split into two loci, one on the west side of the house and one on the east. The study area is bounded on the north by wood lot, on the east by existing residential lots, on the west by existing commercial development as well as wood lot and agricultural fields, and on the south by Highway 26. The study area is approximately 75 metres to the northwest of the intersection of Highway 26 and Ridge Road. A plan of the study area is included within this report as Map 3. Current conditions encountered during the Stage 3 Site-specific Assessment are illustrated in Maps 4 & 5.

5.2.5 SUMMARY OF HISTORICAL CONTEXT

The brief overview of readily available documentary evidence indicates that the study area is situated within an area that was close to historic transportation routes and in an area well populated during the nineteenth century and therefore has potential for sites relating to early Post-Contact settlement in the region. Background research indicates the property has potential for significant archaeological resources of Native origins based on proximity to a natural source of potable water and a navigable waterway in the past.

5.3 ARCHAEOLOGICAL CONTEXT

The Archaeological Sites Database administered by the Ministry of Heritage, Sport, Tourism and Culture Industries (MHSTCI) indicates that there is one (1) previously documented site within 1 kilometre of the study area. However, it must be noted that this is based on the assumption of the accuracy of information compiled from numerous researchers using different methodologies over many years. AMICK Consultants Limited assumes no responsibility for the accuracy of site descriptions, interpretations such as cultural affiliation, or location information derived from the Archaeological Sites Database administered by MHSTCI. In addition, it must also be noted that a lack of formerly documented sites does not indicate that there are no sites present as the documentation of any archaeological site is contingent upon prior research having been conducted within the study area.

Background research shows that one (1) previous study has taken place within 50m of the study area. For further information see:

Scarlett Janusas Archaeology Inc. (2020). *Stage 1-2 Archaeological Assessment Proposed Subdivision 206105 Highway 26, Plan 541, Part of Lots 4 and 14 RP 16R5037 Part 1 and RP 16R10913 Part 1 on Part Lot 19, Concession 6 GT of St. Vincent's, Municipality of Meaford, Grey County Original Report*, Owen Sound, Ontario. Archaeological License Report on File With the Ministry of Heritage, Sport, Tourism and Culture Industries, Toronto, Ontario.

Data contained in previous archaeological reports in close proximity to the study area that is relevant to Stage 1 Background Study is defined within the Standards and Guidelines for Consultant Archaeologists in Section 7.5.8 Standard 4 as follows:

“Provide descriptions of previous archaeological fieldwork carried out within the limits of, or immediately adjacent to the project area, as documented by all available reports that include archaeological fieldwork carried out on the lands to be impacted by this project, or where reports document archaeological sites immediately adjacent (i.e., within 50 m) to those lands.”

(MTCS 2011: 126 Emphasis Added)

In accordance with data supplied by MHSTCI for the purposes of completing this study, there is a previous report detailing, “*archaeological fieldwork carried out on the lands to be impacted by this project*”, and it does document an archaeological site (BdHd-23) within the study area.

The Standards and Guidelines for Consultant Archaeologists stipulates that the necessity to summarize the results of previous archaeological assessment reports, or to cite MHSTCI File Numbers in references to other archaeological reports, is reserved for reports that are directly relevant to the fieldwork and recommendations for the study area (S & Gs 7.5.7, Standard 2, MTC 2011: 125). This is further refined and elaborated upon in Section 7.5.8, Standards 4 & 5, MTC 2011:

“4. Provide descriptions of previous archaeological fieldwork carried out within the limits of, or immediately adjacent to the project area, as documented by all available reports that include archaeological fieldwork carried out on the lands to be impacted by this project, or where reports document archaeological sites immediately adjacent (i.e., within 50m) to those lands.”

“5. If previous findings and recommendations are relevant to the current stage of work, provide the following:

- a. *a brief summary of previous findings and recommendations*
- b. *documentation of any differences in the current work from the previously recommended work*

c. rationale for the differences from the previously recommended work”
(Emphasis Added)

The above-noted report does have relevance to the lands to be potentially impacted by the proposed undertaking, do include fieldwork or recommendations relevant to the study area, and do document a site (BdHd-23) within the study area. Therefore, there is a requirement to include summary data for the previous report.

It must be further noted that there are no relevant plaques associated with the study area, which would suggest an activity or occupation within, or in close proximity to, the study area that may indicate potential for associated archaeological resources of significant CHVI.

In addition, archaeological sites data is also used to determine if any archaeological resources had been formerly documented within or in close proximity to the study area and if these same resources might be subject to impacts from the proposed undertaking. This data was also collected in order to establish the relative significance of any resources that might be encountered during the conduct of the present study. For example, the relative rarity of a site can be used to assign an elevated level of significance to a site that is atypical for the immediate vicinity. The requisite archaeological sites data of previously registered archaeological sites was collected from the MHSTCI and the corporate research library of AMICK Consultants Limited. The Stage 1 Background Research methodology also includes a review of the most detailed available topographic maps, historical settlement maps, archaeological management plans (where applicable) and commemorative plaques or monuments. When previous archaeological research documents lands to be impacted by the proposed undertaking or archaeological sites within 50 metres of the study area, the reports documenting this earlier work are reviewed for pertinent information. AMICK Consultants Limited will often modify this basic methodology based on professional judgment to include additional research (such as, local historical works or documents and knowledgeable informants).

Table 1 illustrates the chronological development of cultures within southern Ontario prior to the arrival of European cultures to the area at the beginning of the 17th century. This general cultural outline is based on archaeological data and represents a synthesis and summary of research over a long period of time. It is necessarily generalizing and is not necessarily representative of the point of view of all researchers or stakeholders. It is offered here as a rough guideline and as a very broad outline to illustrate the relationships of broad cultural groups and time periods.

TABLE 1 PRE-CONTACT CULTURAL CHRONOLOGY FOR SOUTHERN ONTARIO

Years ago	Period	Southern Ontario
250	Terminal Woodland	Ontario and St. Lawrence Iroquois Cultures
1000 2000	Initial Woodland	Princess Point, Saugeen, Point Peninsula, and Meadowood Cultures
3000 4000	Archaic	Laurentian Culture

5000		
6000		
7000	Palaeo-Indian	Plano and Clovis Cultures
8000		
9000		
10000		
11000		
		(Wright 1972)

5.3.1 POST-CONTACT REGISTERED SITES

A summary of registered and/or known archaeological sites within a 1-kilometre radius of the study area was gathered from the Archaeological Sites Database, administered by MHSTCI. As a result it was determined that one (1) archaeological site relating directly to Post-Contact habitation/activity had been formally registered within the immediate vicinity of the study area. The previously registered Post-Contact site is briefly described below in Table 2:

TABLE 2 POST-CONTACT SITES WITHIN 1KM

Site Name	Borden #	Site Type	Cultural Affiliation
Meaford Golf Course	BdHd-10	Scatter	Euro-Canadian

The above noted archaeological site is not situated within 300 metres of the study area. Therefore, it has no impact on determinations of archaeological potential for further archaeological resources related to Post-Contact activity and occupation with respect to the archaeological assessment of the proposed undertaking.

5.3.2 PREVIOUS INVESTIGATIONS

Scarlett Janusas Archaeology Inc. in 2020 completed a Stage 1-2 Archaeological Assessment on the same lands as the current study area. During this assessment, Loon 1 (BdHd-23) was discovered and a Stage 3 Site-Specific Assessment was recommended. Below is the executive summary of the assessment and the resulting recommendations:

The proponent retained the services of Scarlett Janusas Archaeology Inc. (SJA) to conduct a Stage 1 and 2 archaeological resource assessment on property proposed for a subdivision development referred to as Loon Call Subdivision. For the purposes of this report the property undergoing archaeological assessment will hereafter be referred to as the “Study Area”.

Permission to access the Study Area and to conduct all activities associated with the Stage 1 and 2 archaeological assessment was provided by the proponents. The Study Area is located at 206105 Highway 26, Plan 541 Part Lots 4 and 14, on Part Lot 19,

Concession 6, former Township of St. Vincent, Municipality of Meaford, in the County of Grey. The Study Area measures approximately 13.8 hectares.

The County of Grey required an archaeological assessment for the proposed subdivision. The archaeological assessment was triggered by the Planning Act.

Background research indicated that there is one registered archaeological site within one kilometre of the Study Area. This is a small Euro-Canadian historic site (BdHd-10) with 82 recovered artifacts. There are no commemorative/historic plaques or heritage designations located within one kilometre of the Study Area. Historic records indicate that the Crown Patent for the south half of the lot was first issued in 1835 and the north half in 1851.

Soils of the Study Area include: Vincent silty clay loam, Tecumseth sand, and along the Centreville Creek - Bottom Land. The topography of the Study Area was level excluding a ridge running along the north side which dropped steeply down to the creek and floodplain. The Study Area had an elevation range of between 190-200 meters above sea level. Centreville Creek runs through the northern end of the Study Area and Georgian Bay is located approximately 307 metres east of the Study Area.

The Stage 1 archaeological assessment indicated that the Study Area exhibits archaeological potential based on its proximity to primary water sources (i.e. Centreville Creek, Georgian Bay, and Margaret Marshall Saunders Creek); nearby archaeological sites; the prehistoric Lake Nipissing shoreline; and a strong Indigenous and early Euro-Canadian presence in the geographic area.

The Stage 1 and 2 archaeological assessment of the Study Area was conducted under license P027 (Scarlett Janusas, PIF #: P027-0409-2020) on June 1st–5th, June 8th and June 10th–12th, 2020 under good assessment weather conditions. Approximately 48 percent of the Study Area was subject to Stage 2 test pitting survey as it consists of forest, treed lawn and overgrown pasture. Approximately 48 percent of the Study Area was subject to pedestrian survey conducted in five meter intervals as it was agricultural fields that had been ploughed and weathered. The remaining four percent of the Study Area consists of slope greater than 20 degrees (1%), permanently wet areas (<1%), and areas disturbed from extant structures, gravel driveways and demolitions from structures (2%). Of the 48 percent of the Study Area subject of pedestrian survey, approximately four percent was subject to one metre intensification.

A site was located during the pedestrian transect survey and was assigned Borden number BdHd-23, also known as the Loon 1 site. The site is approximately 91 metre north-south by 124 metre east-west, but the two scatters are separated by building, which are included in the above dimensions. The clustering of findspots are in two areas. The first measures approximately 30 by 30 metres, and the second on the opposite side of the buildings is an area 15 x 20 metres. A total of 181 artifacts of Euro-Canadian origin were collected from 69 findspots. Approximately every one in

every four artifacts were collected during the Stage 2 assessment, allowing for a good sample of diagnostic artifacts but leaving enough in the field to identify the site in the future. Preliminary analysis of the site indicates it likely dates from the last half of the 19th century, with a more specific date range from c. 1880-1930's. According to the Standards and Guidelines for Consulting Archaeologists in Ontario (MHSTCI 2011: 39-40), Standard 2.2,1 (c) indicates that where there are "post-contact archaeological sites containing at least 20 artifacts that date the period of use before 1900", Stage 3 archaeological assessment will be required. There are more than 20 artifacts in the site assemblage that pre-date 1900. It is suggested, however, that because the site crosses well into the 20th century, that this may be a terminal Stage 3 assessment that is required. This is a small post contact site where it is not yet evidence that the level of cultural heritage value or interest will prompt a recommendation to proceed to Stage 4 archaeological assessment.

Based upon the Stage 1 background research of past and present conditions, and the Stage 2 archaeological assessment, the following is recommended:

- *A Stage 3 archaeological assessment is required for BdHd-23, where Stage 3 will consist of more in-depth historic research, and the excavation of two artifact loci (30 x 35 m and 15 by 20 m). As it is unknown if the cultural heritage value or interest is sufficient to prompt a Stage 4 archaeological assessment, the Stage 3 excavations should begin on a 10 metre grid, and fill in with 5 metre grid (i.e. one 1 metre square test unit every five metres), or until it is evident that a Stage 4 excavation is necessary (in this case, a total of 13 one metre squared test units plus 40% infill of 5 test units); or if it is clear that the site does not have sufficient heritage value or interest to proceed to Stage 4 then the Stage 3 excavation should excavate one metre squared test units in five metre intervals across the two loci (62 on metre squared units plus an additional 20% infill of 12 units);*
- *The remainder of the Study Area does not require any additional archaeological assessment, however;*
- *Compliance legislation must be adhered to in the event of discovery of deeply buried cultural material or features.*

This archaeological assessment has been conducted under the 2011 Standards and Guidelines for Consultant Archaeologists (Ministry of Heritage, Sport, Tourism and Culture Industries 2011).

(Scarlett Janusas Archaeology Inc. 2020: i-ii)

5.3.3 LOCATION AND CURRENT CONDITIONS

The study area is described as the Loon 1 (BdHd-23) site within 206105 Highway 26, Part of Lot 19, Concession 6 (Geographoc Township of St. Vincent, County of Grey), Municipality of Meaford, County of Grey. The study area was subject to this assessment as a requirement under the Planning Act (RSO 1990) and the Provincial Policy Statement (2020) in order to

support a Draft Plan of Subdivision and companion Zoning By-law Amendment application as part of the pre-submission process.

The present use of the study area is as a vacant lot. There are five buildings within the study area that consist of a house with attached garage, shed, a long outbuilding with signage indicating it as “Kennedy’s Garage”, another long outbuilding indicated as “Kennedy’s Car Shop”, and a small cabin. None of these structures are within the Loon 1 (BdHd-23) site but are within Lot 19. The study area contains within it agricultural lands and wooded area. The Loon 1 (BdHd-23) site is located within the two southernmost fields and protrudes into the lawn north of the house. The study area is roughly 13.8 hectares in area. The Loon 1 (BdHd-23) site is roughly 125 metres east to west by 91 metres north to south, although it should be noted that the site is interrupted in the middle by the house with attached garage and small shed and therefore split into two loci, one of the west site of the house and one on the east. The study area is bounded on the north by wood lot, on the east by existing residential lots, on the west by existing commercial development as well as wood lot and agricultural fields, and on the south by Highway 26. The study area is approximately 75 metres to the northwest of the intersection of Highway 26 and Ridge Road. A plan of the study area is included within this report as Map 3. Current conditions encountered during the Stage 3 Site-specific Assessment are illustrated in Maps 4 & 5.

5.3.4 PHYSIOGRAPHIC REGION

The study area is in the Beaver Valley Physiographic region a small but well-defined region of 77 square miles, occupying a sharply cut indentation in the Niagara cuesta, opening upon Georgian Bay. The greater part of the valley’s erosional history occurred in preglacial times when the forerunner of the Beaver River was a tributary to the stream which carved the deep valley of Georgian Bay. The advance of the glacier up the valley, possibly several times, served to smooth off all the protruding spurs which must have resulted from river erosion, thus leaving it an open, steep-sided, broad-bottomed feature almost comparable to the U-shaped valleys resulting from alpine glaciations (Chapman and Putnam 1984: 122-124).

5.3.5 SURFACE WATER

Sources of potable water, access to waterborne transportation routes, and resources associated with watersheds are each considered, both individually and collectively to be the highest criteria for determination of the potential of any location to support extended human activity, land use, or occupation. Accordingly, proximity to water is regarded as the primary indicator of archaeological resource potential. The Standards and Guidelines for Consultant Archaeologists stipulates that undisturbed lands within 300 metres of a water source are considered to have archaeological potential (MTC 2011: 21).

Centreville Creek runs east to west through the northern tip of the study area. Although there is no surface water within the site, it is located within 300 metres of Georgian Bay and within 300 metres of Centreville Creek. Both of these water sources are illustrated on the Illustrated Historical Atlas of the County of Grey (Belden & Co 1880).

5.3.6 SUMMARY

Background research indicates the vicinity of the study area has potential for archaeological resources of Native origins based on proximity to a source of potable and navigable water. Background research also suggests potential for archaeological resources of Post-Contact origins based on proximity to previously registered archaeological sites of Post-Contact origins, proximity to a historic roadway and structures, and proximity to areas of documented historic settlement.

Archaeological potential does not indicate that there are necessarily sites present, but that environmental and historical factors suggest that there may be as yet undocumented archaeological sites within lands that have not been subject to systematic archaeological research in the past.

6.0 FIELD WORK METHODS AND WEATHER CONDITIONS

AMICK Consultants Limited was engaged by the proponent to undertake a Stage 3 Site-Specific Assessment of the Loon 1 (BdHd-23) site, a historic Euro-Canadian archaeological site potentially affected by the proposed undertaking, and was granted permission to carry out archaeological fieldwork. An intensified pedestrian survey at 1 metre intervals and CSP was required, as it was not done as part of the Stage 2 Archaeological Assessment. There were 90 findspots throughout the CSP. The Stage 3 Assessment consisted of the excavation of 1 by 1 metre square test units on a 5 by 5 metre square grid; the grid squares are referred to by the intersection coordinates of their southwest corner. Each test unit was excavated stratigraphically by hand into the first 5 centimetres of subsoil. Depth varied between 17 and 51 centimeters. Each unit was examined for stratigraphy, cultural features, or evidence of fill, and all soil was screened through wire mesh of 6 millimetre width. All artifacts were retained and recorded by the corresponding grid unit designation. The soil stratigraphy ranged from a medium brown loamy sand overlaying a light orange grey loamy sand subsoil to a light brown loamy clay overlaying a light grey clay subsoil. A total of 88 test units, with an additional 22 test units amounting to 20% of the grid unit total in areas of interest or high artifact concentration, were hand-excavated on July 7, 9, 13-15, 20, and 21, 2020. All records, documentation, field notes, photographs and artifacts (as applicable) related to the conduct and findings of these investigations are held at the Lakelands District corporate offices of AMICK Consultants Limited until such time that they can be transferred to an agency or institution approved by the Ontario Ministry of Heritage, Sport, Tourism and Culture Industries (MHSTCI) on behalf of the government and citizens of Ontario.

6.1 TEST UNIT AND CSP STRATEGY

6.2 CONTROLLED SURFACE PICK-UP (CSP)

In all cases where artifacts were found pedestrian survey intervals were reduced to one metre ~~between individual transects and all artifacts found on the surface were marked with~~

numbered flags. The artifacts were collected and bagged according to the numbered location where each was found. Every find location was individually recorded using GPS with an accuracy of 5 metres or less. All artifacts were collected. A detailed description of the location of the CSP can be found in the supplementary documentation of this report filed under separate cover with the Ministry of Heritage, Sport, Tourism and Culture Industries (MHSTCI).

6.3 TEST UNIT STRATEGY

The Stage 3 assessment strategy for the site was consistent with that outlined in the 2011 Standards and Guidelines for Consultant Archaeologists for archaeological sites where it is evident that there is little cultural heritage value or interest, therefore, a Stage 4 mitigation of impacts is not required. The test unit strategy employed followed the objective of determining the precise nature and limits of deposits associated with the Loon 1 (BdHd-23) site within Lot 19. As it was not clearly evident based on the Stage 2 if the assessment would proceed to Stage 4. The Stage 3 assessment strategy included the excavation of eighty-eight (88) one-metre by one-metre square test units at a 5 metre interval and an additional twenty-two (22) units representing a minimum of 20% infilling squares based on the original total number of squares excavated on the 5 metre grid. It must be noted that the excavation began on a 10 metre grid but when it became evident that the Loon 1 (BdHd-23) site would not require a Stage 4 mitigation of impacts, the grid was reduced to 5 metres with a 20% infill. The test units began in areas of high artifact concentration documented by the CSP's and the test units were expanded based outward until counts fell below 20, which is extremely low for Post-Contact sites. Without any evidence of cultural features the site limits can only be established through volume of finds contained within the plough zone. Areas with very low yields were deemed to be of low potential CHVI. It must also be noted that the west loci was surrounded by a gravel driveway and areas of fill and clear disturbance. In some cases, test unit excavation could not continue to the west, south or north due to the presence of the disturbance and lack of viability of assessment.

All relevant previous reports were reviewed prior to the Stage 3 Assessment. The Stage 3 excavations were completed in ideal conditions, and systematically to document the presence and artifacts and stratigraphy. A grid of one-metre by one-metre squares was superimposed over the area defined by the CSPs. The grid coordinate system was based upon the findings completed during the CSP. The location and number of test units was determined using standards presented in Table 3.1 of the *2011 Standards and Guidelines for Consultant Archaeologists* as well as professional judgment. The objectives of the test unit placement strategy was to provide a uniform level of data collection from across the site, focus testing on key areas (as deemed appropriate based on professional judgment), gather a representative artifact sample from across the site, determine the nature of subsurface deposits, and determine the extent of the archaeological site, in order to support the recommendations for no further cultural heritage value or interest. All test units measured one by one metre squares, where excavated by hand and all soil screen through mesh with an aperture no larger than 6mm and all recovered artifacts retained, recorded and catalogued by their corresponding grid unit designation. All test units were excavated into 5 cm of subsoil and by

standardized systematic levels. A detailed description of the location of the test unit excavation can be found in the supplementary documentation of this report filed under separate cover with the Ministry of Heritage, Sport, Tourism and Culture Industries (MHSTCI).

The Stage 3 assessment of the Loon 1 (BdHd-23) site within Lot 19 resulted in the excavation of a total 88 test units, the recovery of 2526 artifacts (all of Euro-Canadian origins).

7.0 RECORD OF FINDS

A summary of the different types of artifacts are listed in Table 3 along with frequency and percentage of artifacts throughout the Loon 1 (BdHd-23) site. A complete artifact catalogue is appended to the end of this report as Appendix A.

Section 7.9.2 of the Standards and Guidelines for Consultant Archaeologists (MTC 2011: 137-138) outlines the requirements of the Record of Finds component of a Stage 3 report:

- 1. Describe features uncovered in the excavations, including plan and any information that is visible without excavation of feature fill and contents.*
- 2. Describe artifact distributions and frequencies on the surface and in test units, including reference to distinct activity areas or artifact patterning and to single-component areas.*
- 3. Provide a catalogue and description of all artifacts collected from the surface and from test units. (See section 6: Artifact Documentation and Analysis for requirements regarding artifact analysis and description.)*
- 4. Provide observations of unusual or unexpected findings.*
- 5. Provide an inventory of the documentary record generated in the field (e.g., photographs, maps, field notes).*

7.1 ARCHAEOLOGICAL RESOURCES

The entirety of the Loon 1 (BdHd-23) site located within Lot 19 has been subject to Stage 3 CSP and test unit excavations. A total of 2526 artifacts of Euro-Canadian origins have been collected during these investigations. The site is located within a plough zone, and therefore plough disturbed. Most of the Euro-Canadian artifacts are associated with dates between 1860 to well into the 20th century.

7.1.2 EURO-CANADIAN ARTIFACTS

A total of 2526 Euro-Canadian artifacts were recovered from the Stage 3 Site-specific assessment of 90 CSP's and 110 one-metre by one-metre units at the Loon 1 (BdHd-23) site. Twenty-two (22) of the one hundred and ten (110) test units, which represent the 20 % infill,

were placed in areas of interest around squares producing high counts of artifacts in order to gather more information on these areas.

The majority of artifacts from the Loon 1 (BdHd-23) site consist of glass and ceramic. These are broken down in the table below based on artifact type. The artifacts found during the Stage 3 assessment indicate that the Loon 1 (BdHd-23) site dates between 1860 and well into the 20th century. Although there are a high number of artifacts, there is little cultural heritage value or interest and a Stage 4 is not recommended. Descriptions of these artifact types are discussed in depth below Table 3.

TABLE 3 LOON 1 (BDHD-23) ARTIFACT COUNTS AND TYPES

DESCRIPTION	FREQUENCY	PERCENTAGE
Aluminum Bottle Cap	1	0.03%
Baked Plastic	5	0.2%
Brass Objects	6	0.23%
Glazed Coarse Red Earthenware	16	0.62%
Unglazed Coarse Red Earthenware	34	1.33%
Amber Bottle Glass	4	0.15%
Black Bottle Glass	4	0.15%
Blue Bottle Glass	39	1.53%
Brown Bottle Glass	33	1.37%
Clarified Glass (Window and Bottle)	405	15.91%
Clear Glass	201	7.9%
Frosted Glass	1	0.03%
Green Glass	33	1.3%
Magenta Glass	31	1.21%
Miscellaneous Glass	33	1.3%
Olive Green Bottle Glass	21	0.94%
Copper Objects	5	0.19%
Iron Objects (nails, wire, mechanical)	661	25.98%
Ironstone Ceramic	88	3.45%
Ivory Ware	1	0.03%
Bone- Mammal	217	8.52%
Non-Baked Plastic	1	0.03%
Plated Brass	1	0.03%
Porcelain	19	0.74%
Refined White Earthenware	613	24.09%
Refined Yellow Earthenware	38	1.49%
Stainless Steel	1	0.03%
Steel	7	0.27%
Synthetic Polymer	1	0.03%

Tin Jar	3	0.11%
White Ball Clay	3	0.11%
TOTAL	2526	100%

The collection of artifacts from this assessment is packaged in a single banker's box and housed at the Lakelands District office of AMICK Consultants Limited until such time as an appropriate permanent location, as approved by MHSTCI, is located and appropriate arrangements for the transfer of the collection and associated responsibilities for the material is made.

CERAMICS

A total of 821 ceramics were recovered comprising of 32.21% of the total assemblage. These included glazed coarse red earthenware (0.62%), unglazed coarse red earthenware (1.33%) red earthenware, refined white earthenware (24.24%), refined yellow earthenware (1.49%), ironstone (3.65%), ivory ware (0.03%), white ball clay (0.11%), and porcelain (0.74%).

Refined White Earthenware

The various forms of refined white earthenware which came into production during the 1820s remained in production for an extended period of time and do not lend themselves well to dating unless one has the advantage of makers' marks. In the case of this site there is not one example of refined white earthenware, which has a maker's mark. This is not surprising since the ceramics from this ware category recovered from this site represent the cheapest types produced. The cheapest goods were often not marked since it was not considered worth the time and material.

Plain Refined White Earthenware

Lacking any definitive attributes, these sherds have been assigned a date of post 1825. The majority of refined white earthenware ceramics found were plain.

Transfer Printed Refined White Earthenware

Transfer printing was a method for transferring pictures to the surface of ceramic vessels, which was developed during the late 18th Century. The use of colours other than cobalt blue for transfer printing was not attempted on any large scale until after 1828. The reason for this was that cobalt blue oxide was the only colouring agent which remained stable during the firing when used in conjunction with the transfer printing process. In 1828 a process was patented which allowed for the use of other colours. Immediately after this development colours such as red, brown, green, black and light blue were used on a popular level. Coloured transfers were popular in England by 1830 and had achieved similar appeal in North America by the early 1830s (Collard 1984: 117-118). Transfer printed refined white earthenware accounted for (5.11%)

Sponge Decorated Refined White Earthenware

This decorative style is produced by applying pigment to the surface of vessels using sponges. This type of decoration enjoyed tremendous popularity during the middle of the 19th Century. Blue was the first colour used for this purpose and was most prevalent during the 1840s. Sponged wares were shipped to North America in quantity as cheap decorative kitchen and toiletry articles by mainly Scottish potteries until about 1890 (Collard 1984: 144-145). A very small percentage (1.09%) of the ceramic assemblage was spongeware.

Ironstone

Ironstone is partially vitrified white earthenware. Plain ironstone was first produced in the 1840s and featured no decorative elements apart from ribs, scrolls, or panels which were an intrinsic part of the vessel design. Various designs in relief moulded decoration were patterned from 1848 onward. One pattern, known generally as the “wheat” Pattern has remained in production in various styles from 1848 up to the present day (Sussman 1985: 7). Ironstone is first mentioned on Ontario store records in 1847 (Kenyon 1988: 25). This ware gained popularity throughout the second half of the nineteenth century until by the 1880s it far outsold other ceramic types (Kenyon 1988: 20).

Ironstone was manufactured specifically for the North American market. In general, those potteries which produced this ceramic did so to the exclusion of all others (Sussman 1985: 8). During its early history, throughout the 1850s and early 1860s, ironstone was evidently as expensive as the costly transfer printed wares (Sussman 1985: 9). This ware was being advertised in London (Ontario) newspapers by the early 1860s and by the 1870s was one of the most popular ceramics available on the market (Kenyon n.d.: 11). By 1897 it was the cheapest ceramic sold by the T. Eaton Company. Prices charged for either plain or relief decorated ironstone were the same (Sussman 1985: 9). Ironstone accounts for 3.45% of the total assemblage. Of the ironstone ceramics only 5.4% had a relief mould, 3.3% had Maker's Marks, and 91.3% were undecorated.

Plain Ironstone

These pieces are not precisely datable and were most likely produced some time after 1840. Ironstone and a number of related vitrified and semi-vitrified wares were produced in great quantities during the second half of the 19th Century and into the 20th Century. These ceramics were a continuation of the development techniques and styles employed in the production of other earlier contemporary wares.

Relief Moulded Ironstone

The most common decorative technique identified with ironstone is relief moulding. Raised designs on the vessels were incorporated into the moulding of the objects themselves. Many of the early patterns produced in this medium persist to the present day. Many ceramics manufactured prior to the introduction of ironstone incorporated the use of embossed

designs, but this form of decoration had never been so closely identified with a particular ceramic as it became with ironstone.

Soft Paste Porcelain

Porcelain was first produced in Europe at Meissen by the firm “Royal Saxon Porcelain Manufacture” in 1710, although it had been developed by Johann Friedrich Bottger two years previously in 1708 (Savage 1954:125). This development reflects the high regard Europeans had held for porcelain imported from China and Japan. Loved for their beauty and durability, European ceramic producers lost considerable revenue to this import and were determined to discover a means of duplicating the ware. In England the discovery of a formula for porcelain production was not achieved until probably 1743 when the “Chelsea” works went into production. A patent for soft paste porcelain was made the following year in the joint names of Edward Heylyn and Thomas Frye (Savage 1954: 210). Throughout the early period of European production these wares tended to be heavily ornamented with thick overglaze polychrome enamels and as processes were refined the decorative techniques of underglaze painting and transfer patterns were used extensively. These decoration techniques predominated well into the 19th Century. It was not until the late 19th Century, and particularly, the 20th Century that porcelain became accessible as a standard household ware. By this time its decorative characteristics were substantially debased, with plain porcelain becoming increasingly common.

Soft paste porcelain is the lowest grade of this ware, and is different from the more costly hard paste porcelain in a number of ways. First, soft paste porcelain generally exhibits a greyish cast, whereas hard paste porcelain or true porcelain is white. When broken soft paste porcelain has a granular paste in appearance and a glassy glaze, which is visibly distinct from the body. Hard paste is entirely glassy in cross section and it is very difficult to assess where the body ends and the glaze begins. High firing in this case ensures a more complete fusion of body and glaze, which accounts for the difference in appearance of these two wares.

Plain Soft Paste Porcelain

Lacking any other diagnostic datable attributes, plain sherds of this ware cannot be more precisely dated beyond the general date range of this type of ceramic. The porcelain found within this assemblage consists of mainly undecorated fragments and unglazed (parian) porcelain used for toy dolls.

Yellow Ware

Yellow ware was generally used for kitchen crockery and utility bowls. Yellow ware, which is decorated with coloured horizontal bands is often referred to as “banded ware”. This is the most readily recognizable of the yellow ware products, which became popular after 1840. Undecorated plain yellow ware is termed “common yellow” and dates from about 1830 onward. Yellow ware did not pass out of common usage in Canada until the 1930s (Lueger 1981: 141).

Yellow ware accounted for 1.49% of the total assemblage and within that 23% was identified as Rockingham ware, 53% was glazed with a clear glaze and identified as crocks and fragments of kitchenware and the remaining 24% was unglazed indeterminate fragments.

Coarse Red Earthenware

Coarse red earthenware refers to a class of ceramic which was used largely for general purpose utilitarian kitchen and household wares. It is very difficult to date with precision as this form of vessel manufacture was pursued in the main by small cottage industries supplying what was normally a local market. As a result, they appear in highly variant forms based upon the clays, glazes, and techniques of each potter. They are common on historic sites from the beginning of settlement in North America until 1900. Two of the earliest potteries to be established in Ontario both began production in 1849. Many other potteries were soon established which provided domestic and utilitarian wares to primarily local consumers. The coarse red earthenware found in this assemblage accounts for 1.95% of the total and is split between glazed (0.62%) and unglazed (1.33%). Most of the coarse red earthenware was fragmentary. 32% of the unglazed coarse red earthenware was identified as brick, 18% was identified as flowerpots, 3% as pipe, and 47% were unidentifiable fragments. Of the glazed coarse red earthenware, 19% was identified as crocks and the remaining 81% were unidentifiable fragments.

GLASS

Machine Made Bottle Glass

In the late 19th Century a trend started toward the manufacture of bottles with semi-automatic and fully automatic machines. Machine made bottles are hollowware containers shaped using air pressure supplied by a machine, both automatic and semi-automatic machines produce bottle with similar characteristics. The first workable semi-automatic machines were patented in 1881 in the United States and in 1886 in England, in the next few decades machine made containers become increasingly popular as they are cheaper to produce with continually refined techniques; by the early 20th Century hand blown bottle are becoming uncommon.

Undiagnostic Bottle Glass

These pieces are likely from two-piece moulded vessels or from vessels produced using two-or-more vertical body moulds with separate bases. However these pieces were too small or did not have any diagnostic traits needed to identify the technology used in their manufacture. The majority of bottle glass found within the assemblage was unidentifiable fragments other than being described by colour, which ranged from blue, magenta, green, amber, and black.

Contact Moulded Bottle Glass

Contact moulding is a process by which full-sized objects or portions of objects are formed in a mould using air pressure from a mouth or machine. Hot glass is introduced into a mould, that may or may not have had a design, and expanded by air pressure until it fills the mould, at which point the object or partial object is removed. This technique was used during Roman times extensively for containers. It was reintroduced in the 17th Century but did not come into wide use in containers until the 18th Century (Jones and Sullivan 1989: 23-24).

NAILS

Cut Nails

Around 1800, machines for cutting nails began to be used. At first these were simple machines resembling a table with a guillotine-like knife at one end. Strips of metal which were as broad as the resulting nails were to be long were fed against the blade. The strip of metal was shifted from side-to-side following each cut. This produced the tapered shank of the nail. Nails made by this method remained square in cross section and still required heads to be fashioned by hand. Around 1820 improved machines were developed for the manufacture of cut nails which included mechanical headers (Rempel 1980: 369). In general terms, cut nails dominated the construction industry from roughly 1825 to 1890 when they were displaced by wire nails. Only 1.6% of the nails found within the assemblage were cut nails, 98.4% of the nails found were wire nails.

7.2 STRATIGRAPHY

The stratigraphy within the Loon 1 (BdHd-23) site was very simple. All of the test units within the site consisted of only one layer with the exception of test units 620E 385N, 625E 385N, and 620E 390N, which had a second layer of rock fill surrounding a PVC drainage pipe that led away from the existing house. These layers were sterile and were excavated below the disturbance to ensure there were no deeply buried archaeological resources. Due to the variance in soil type throughout the site the soil stratigraphy ranged from medium brown loamy sand overlaying light orange grey loamy sand subsoil to light brown loamy clay overlaying light grey clay subsoil. No cultural features were found within the Loon 1 (BdHd-23) site. Test units ranged in depth from 17 to 51 centimetres, including the 5 centimetres into subsoil. The shallow test units consisted of loamy clay and generally less artifacts where as the deeper units consisted of loamy sand and generally had more artifacts but the intensity of artifacts depending mainly on the location throughout the site.

7.3 ARCHAEOLOGICAL FIELDWORK DOCUMENTATION

The documentation produced during the field investigation conducted in support of this report includes: two sketch maps, four pages of photo logs, eight pages of field notes, and 125 digital photographs.

8.0 ANALYSIS AND CONCLUSIONS

AMICK Consultants Limited was engaged by the proponent to undertake the Stage 3 Site-specific Assessment of the Loon 1 (BdHd-23) site potentially affected by the proposed undertaking and was granted permission to carry out archaeological fieldwork. The Stage 3 Site-specific Assessment consisting of CSP and Test Unit Excavation, which was completed on July 7, 9, 13-15, 20, and 21, 2020. All records, documentation, field notes, photographs and artifacts (as applicable) related to the conduct and findings of these investigations are held at the Lakelands District corporate offices of AMICK Consultants Limited until such time that they can be transferred to an agency or institution approved by the Ontario Ministry of Heritage, Sport, Tourism, and Culture Industries (MHSTCI) on behalf of the government and citizens of Ontario.

8.1 STAGE 3 ANALYSIS AND CONCLUSIONS

Section 7.9.3 of the Standards and Guidelines for Consultant Archaeologists (MTC 2011: 145) outlines the requirements of the Analysis and Conclusions component of a Stage 3 Site-specific Assessment.

- 1) *“Provide a determination of the age and cultural affiliations of each archaeological site for which Stage 3 assessment was carried out.*
- 2) *“Discuss the correlation between the archaeological findings and historical documentation. The historical documentation may include the findings of previous reports (e.g. Stage 1 report, research reports about the property)*
- 3) *“Compare analysis and conclusions for each archaeological site with current archaeological knowledge for this type of site. If analysis, conclusions and recommendations are different from the broader archaeological knowledge for a type of site, outline the basis for this differing interpretation.*
- 4) *“Provide an evaluation of the level of cultural heritage value or interest for each archaeological site for which Stage 3 was carried out.”*

Based on the findings from the Loon 1 (BdHd-23) site it is evident that the site is a late 19th to early 20th century Euro-Canadian farmstead. There were no Pre-Contact artifacts found within the site. These findings are synonymous with the historical background of the area and study area specifically due to the high number of Euro-Canadian settlers that lived within the lot in the mid-to-late 19th century.

A total of 2526 artifacts were recovered from 90 findspots found within the CSP's as well as 110 one-metre by one-metre square test units. The artifacts found were Post-Contact in nature and indicated Euro-Canadian settlement due to the types of ceramics and glass found. There were no subsurface features of any kind found within the site. Recent disturbances (the PVS drainage pipe and rock fill) were the only variations in soil stratigraphy. Although the number of artifacts found within the site is high, they possess little CHVI or interest to further the assessment of the Loon 1 (BdHd-23) site. Stage 4 mitigation of impacts is not required or recommended.

9.0 RECOMMENDATIONS

9.1 STAGE 3 RECOMMENDATIONS

Under Section 7.9.4 of the Standards and Guidelines for Consultant Archaeologists (MTC 2011: 139) the recommendations to be made as a result of a Stage 3 Site-specific Assessment are described:

1. *If it is concluded that an archaeological site has further cultural heritage value or interest, make recommendations on appropriate Stage 4 mitigation strategies.*
 - a. *Recommendations must be informed by input from Aboriginal communities for the types of Aboriginal archaeological sites specified in 3.5 Formulation of Stage 4 strategies.*
 - b. *Recommendations must be detailed enough to give clear and accurate understanding of the actions required.*
 - c. *If reporting on more than one archaeological site in one report, make recommendations for each site individually.*
2. *For archaeological sites that have further cultural heritage value or interest that requires Stage 4 mitigation of impacts, the preferred approach is avoidance and protection. The report must include a summary of the advice provided to the proponent regarding protection and avoidance, including the results of engagement with Aboriginal and other communities.*
 - a. *If it is determined that avoidance and protection is the preferred approach, provide that recommendation, including the details of the proposed approach including appropriate avoidance and long-term protection strategies.*
 - b. *If it is determined that avoidance and protection is not viable, provide the basis for the determination.*
3. *If it is determined that excavation is the preferred approach to Stage 4 mitigation of impacts, the recommendation must include a detailed strategy for excavation and documentation, based on 4.2 Approach 2: Excavation.*
4. *If it is determined that long-term protection is the preferred approach to Stage 4 mitigation of impacts, the recommendation must include a detailed description of the preferred protection mechanism.*
5. *If it is determined that the site has no further cultural heritage value or interest at the conclusion of Stage 3, recommend that Stage 4 mitigation of impacts is not required for the site.*

The Stage 3 Site-specific Assessment of the Loon 1 (BdHd-23) site indicates that it has no additional cultural heritage value or interest (CHVI) and the site has now been sufficiently documented. The report recommends that Stage 4 mitigation of impacts is not required for the Loon 1 (BdHd-23) site.

10.0 ADVICE ON COMPLIANCE WITH LEGISLATION

While not part of the archaeological record, this report must include the following standard advisory statements for the benefit of the proponent and the approval authority in the land use planning and development process:

- a. This report is submitted to the Minister of Heritage, Sport, Tourism and Culture Industries as a condition of licensing in accordance with Part VI of the Ontario Heritage Act, R.S.O. 1990, c. 0.18. The report is reviewed to ensure that it complies with the standards and guidelines issued by the Minister, and that the archaeological fieldwork and report recommendations ensure the conservation, protection and preservation of the cultural heritage of Ontario. When all matters relating to archaeological sites within the project area of a development proposal have been addressed to the satisfaction of the Ministry of Tourism and Culture, a letter will be issued by the ministry stating that there are no further concerns with regard to alterations to archaeological sites by the proposed development.*
- b. It is an offence under Sections 48 and 69 of the Ontario Heritage Act for any party other than a licensed archaeologist to make any alteration to a known archaeological site or to remove any artifact or other physical evidence of past human use or activity from the site, until such time as a licensed archaeologist has completed archaeological fieldwork on the site, submitted a report to the Minister stating that the site has no further cultural heritage value or interest, and the report has been filed in the Ontario Public Register of Archaeological Reports referred to in Section 65.1 of the Ontario Heritage Act.*
- c. Should previously undocumented archaeological resources be discovered, they may be a new archaeological site and therefore subject to Section 48 (1) of the Ontario Heritage Act. The proponent or person discovering the archaeological resources must cease alteration of the site immediately and engage a licensed archaeologist to carry out archaeological fieldwork, in compliance with sec. 48 (1) of the Ontario Heritage Act.*
- d. The Cemeteries Act, R.S.O. 1990, c. C.4 and the Funeral, Burial and Cremation Services Act, 2002, S.O. 2002, c.33 (when proclaimed in force) require that any person discovering human remains must notify the police or coroner and the Registrar of Cemeteries at the Ministry of Consumer Services.*
- e. Archaeological sites recommended for further archaeological fieldwork or protection remain subject to Section 48 (1) of the Ontario Heritage Act and may not be altered, or have artifacts removed from them, except by a person holding an archaeological licence.*

11.0 BIBLIOGRAPHY AND SOURCES

- Chapman, L.J. & D.F. Putnam. (1984). *The Physiography of Southern Ontario (Third Edition)*. Ontario Geological Survey, Special Report #2. Ontario Ministry of Natural Resources, Toronto.
- Collard, Elizabeth. (1984). *Nineteenth Century Pottery and Porcelain in Canada (2nd Ed.)*. McGill University Press: Kingston.
- Esri. "Topographic" [basemap]. Scale Not Given. "World Topographic Map". August 26, 2020. <http://www.arcgis.com/home/item.html?id=30e5fe3149c34df1ba922e6f5bbf808f>. (August 26, 2020).
- Garrad, Charles. (1979). *Before the Europeans. An Illustrated History of Collingwood Township*. Bill Shannon (ed.). Collingwood Township Council, Collingwood.
- Garrad, Charles. (2014). *Petun to Wyandot. The Ontario Petun from the Sixteenth Century*. Jean-Luc Pilon and William Fox (ed.). Mercury Series Archaeology Paper 174. Canadian Museum of History and University of Ottawa Press, Ottawa.
- Goel, Tarun (2013). Road Construction: History and Procedure. Bright Hub Engineering. Retrieved 24 May 2015 from URL: <http://www.brighthubengineering.com/structural-engineering/59665-road-construction-history-and-procedure/>
- Google Earth (Version 6.0.3.2197) [Software]. (2020). Available from <http://www.google.com/earth/index.html>.
- Grey County (2010). *History of Grey County*. Retrieved 22 September, 2010 from URL: <http://www.grey.ca/government-administration/about-grey/history-of-grey-county/>. Owen Sound, Ontario.
- Jones, Olive, Sullivan, Catherine. (1989). *The Parks Canada Glass Glossary for the Description of Containers, Tableware, Flat Glass and Closures*. National Historic Parks and Sites, Canadian Parks Service, Environment Canada.
- Kenyon, Ian. (1988). *A History of Ceramic Tableware in Ontario: Quantitative Trends in Teaware*. Arch Notes 88(2): 5-8.
- Kuhlmann, Stacy. (2017). *Types of Soil*. Diagram of Soil Types available from <http://www.tes.com/lessons/AKChU3fbfZKo9g/types-of-soil>.
- Lueger, Richard. (1981). *Ceramics From Yuquot, British Columbia*. History And Archaeology, No 44. Parks Canada: Ottawa.
- Marsh, E.L. (1931). *A History of the County of Grey*. Fleming Publishing Co., Owen Sound.
- Ontario Heritage Act, RSO 1990a, Government of Ontario. (Queen's Printer, Toronto).
- Ontario Heritage Amendment Act, SO 2005, Government of Ontario. (Queen's Printer, Toronto).

Ontario Land Registry Abstract Index for Lot 19, Concession 6 St. Vincent Township, County of Grey. Retrieved from: <https://www.onland.ca>

Ontario Ministry of Citizenship, Culture and Recreation (OMCzCR). (1993). *Archaeological Assessment Technical Guidelines, Stages 1-3 and Reporting Format*. (Queen's Printer for Ontario 1993)

Ontario Ministry of Culture (MCL). (2005). *Conserving a Future for Our Past: Archaeology, Land Use Planning & Development in Ontario (An Educational Primer and Comprehensive Guide for Non-Specialists)*. (Heritage & Libraries Branch, Heritage Operations Unit: Toronto).

Ontario Ministry of Culture and Communications (MCC) & Ministry of Environment (MOE). (1992). *Guideline for Preparing the Cultural Heritage Resource Component of Environmental Assessments*. (Cultural Programs Branch, Archaeology and Heritage Planning: Toronto).

Ontario Ministry of Tourism and Culture (MTC). (2011). *Standards and Guidelines for Consultant Archaeologist*. (Programs and Services Branch: Culture Programs Unit, Toronto).

Ontario Planning Act, RSO 1990b, Government of Ontario. (Queen's Printer, Toronto).

Provincial Policy Statement (2020). Government of Ontario. (Queen's Printer, Toronto).

Rempel, I. (1980). *Building With Wood (Revised Edition)*. University of Toronto Press: Toronto.

Savage, George. (1954). *Porcelain Through the Ages*. Penguin Books: Harmondsworth.

Scarlett Janusas Archaeology Inc. (2020). *Stage 1-2 Archaeological Assessment Proposed Subdivision 206105 Highway 26, Plan 541, Part of Lots 4 and 14 RP 16R5037 Part 1 and RP 16R10913 Part 1 on Part Lot 19, Concession 6 GT of St. Vincent's, Municipality of Meaford, Grey County Original Report*, Owen Sound, Ontario.
Archaeological License Report on File With the Ministry of Heritage, Sport, Tourism and Culture Industries, Toronto, Ontario.

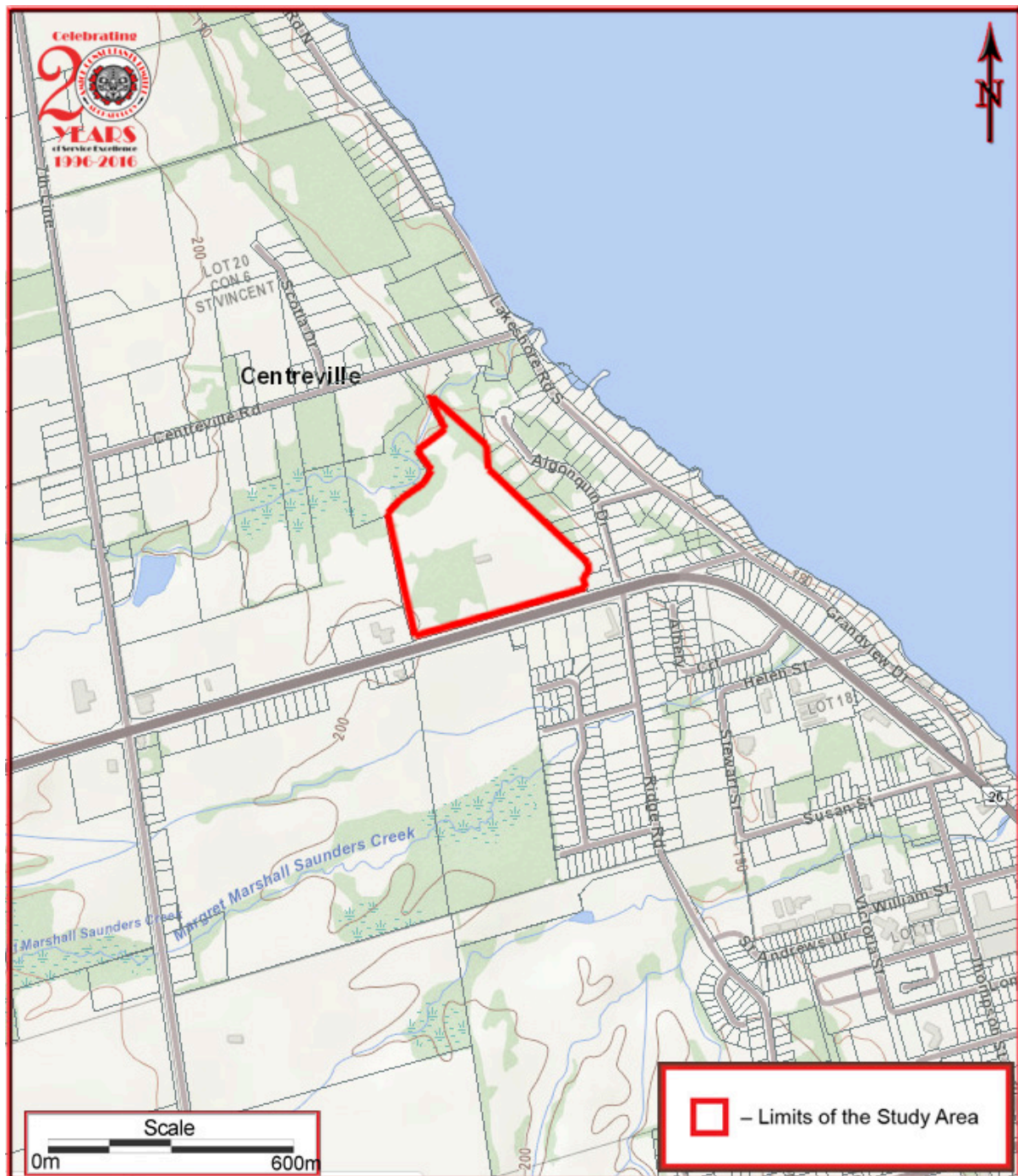
Smith, David G. (2002). "Ten Thousand Years: Aboriginal Heritage in Mississauga." In *Mississauga: The First 10,000 Years*. Frank Dieterman, Ed. Mississauga Heritage Foundation, Eastendbooks, Toronto.

Smith, W.W. (1865). *Gazetteer and Directory of the County of Grey for 1865-6*. Globe and Steam Press, Toronto.

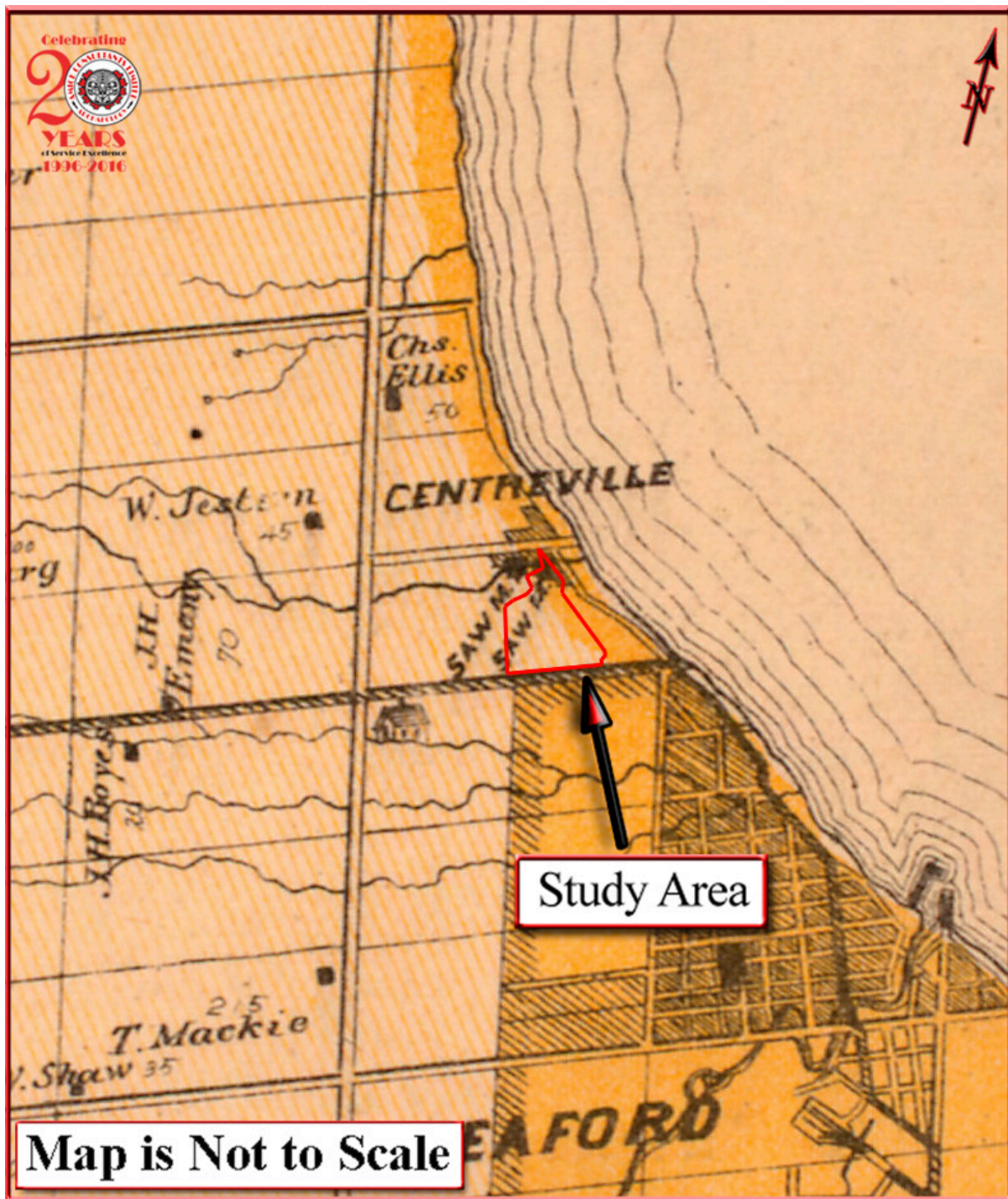
Sussman, Lynne. (1977). *The Ceramics of Lower Fort Garry: Operations 1 to 31*. Parks Canada: Ottawa.

Wright, J.V. (1972). *Ontario Prehistory: an Eleven-thousand-year Archaeological Outline*. Archaeological Survey of Canada. National Museum of Man, Ottawa

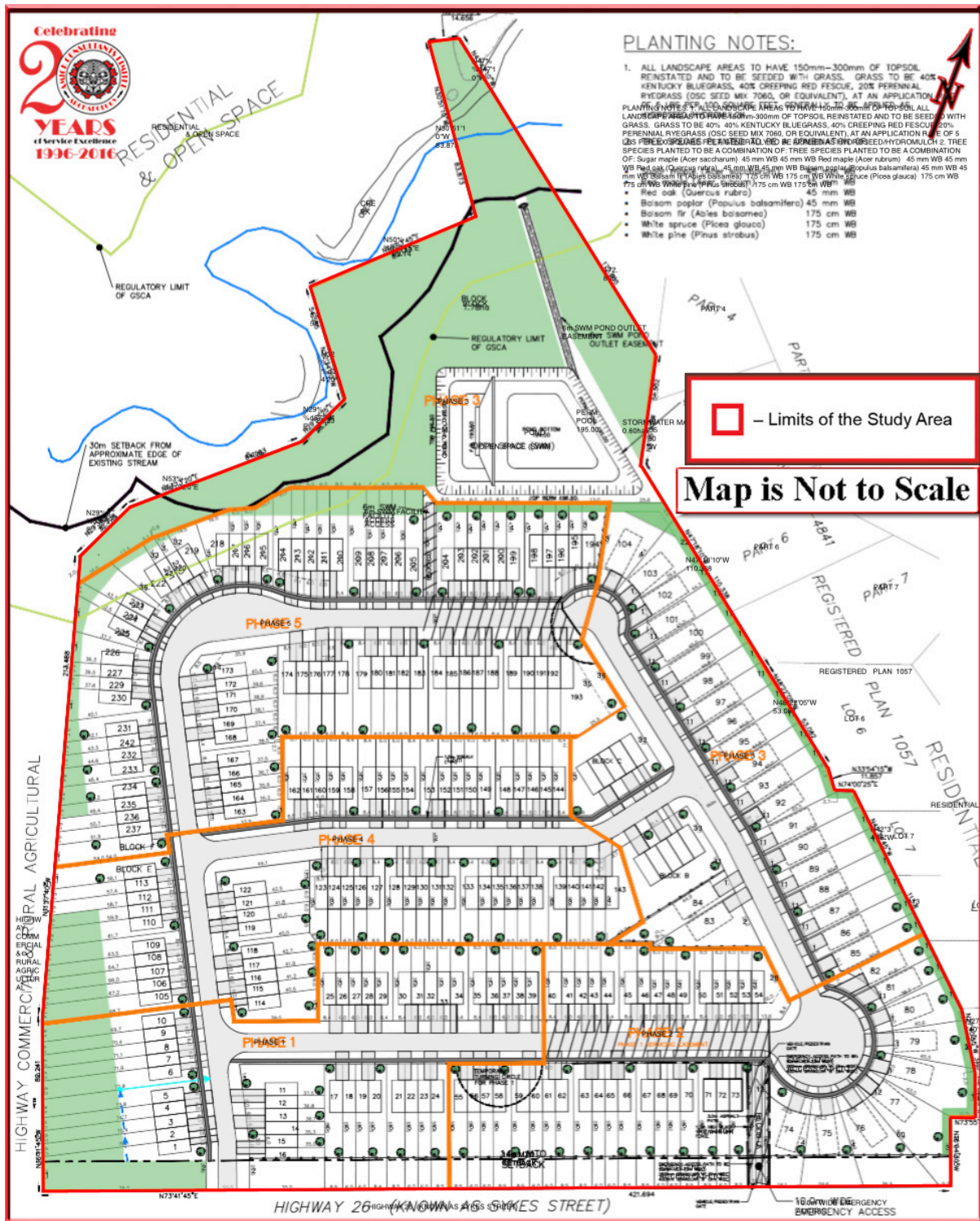
12.0 MAPS

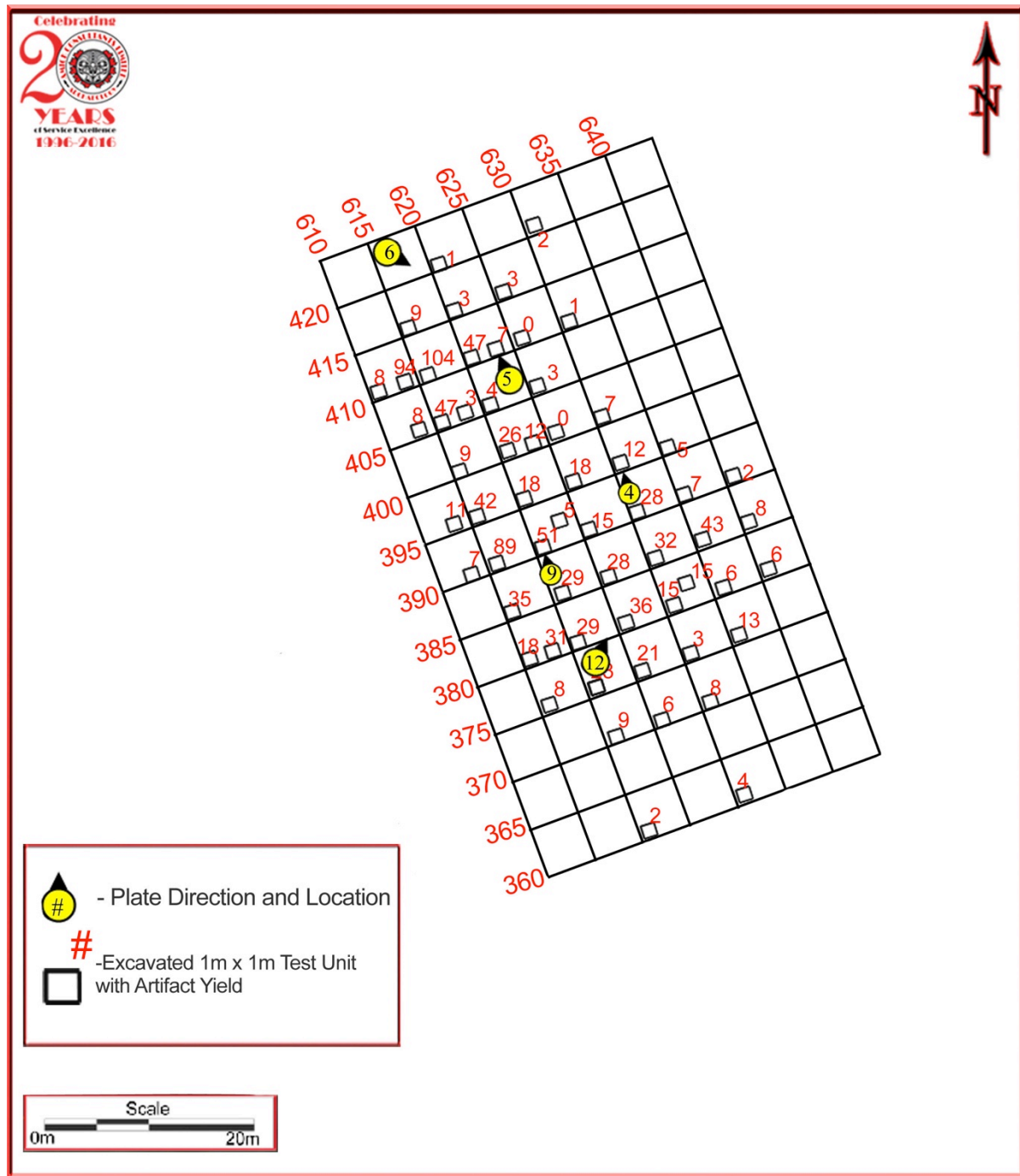


MAP 1 LOCATION OF THE STUDY AREA (ESRI 2020)

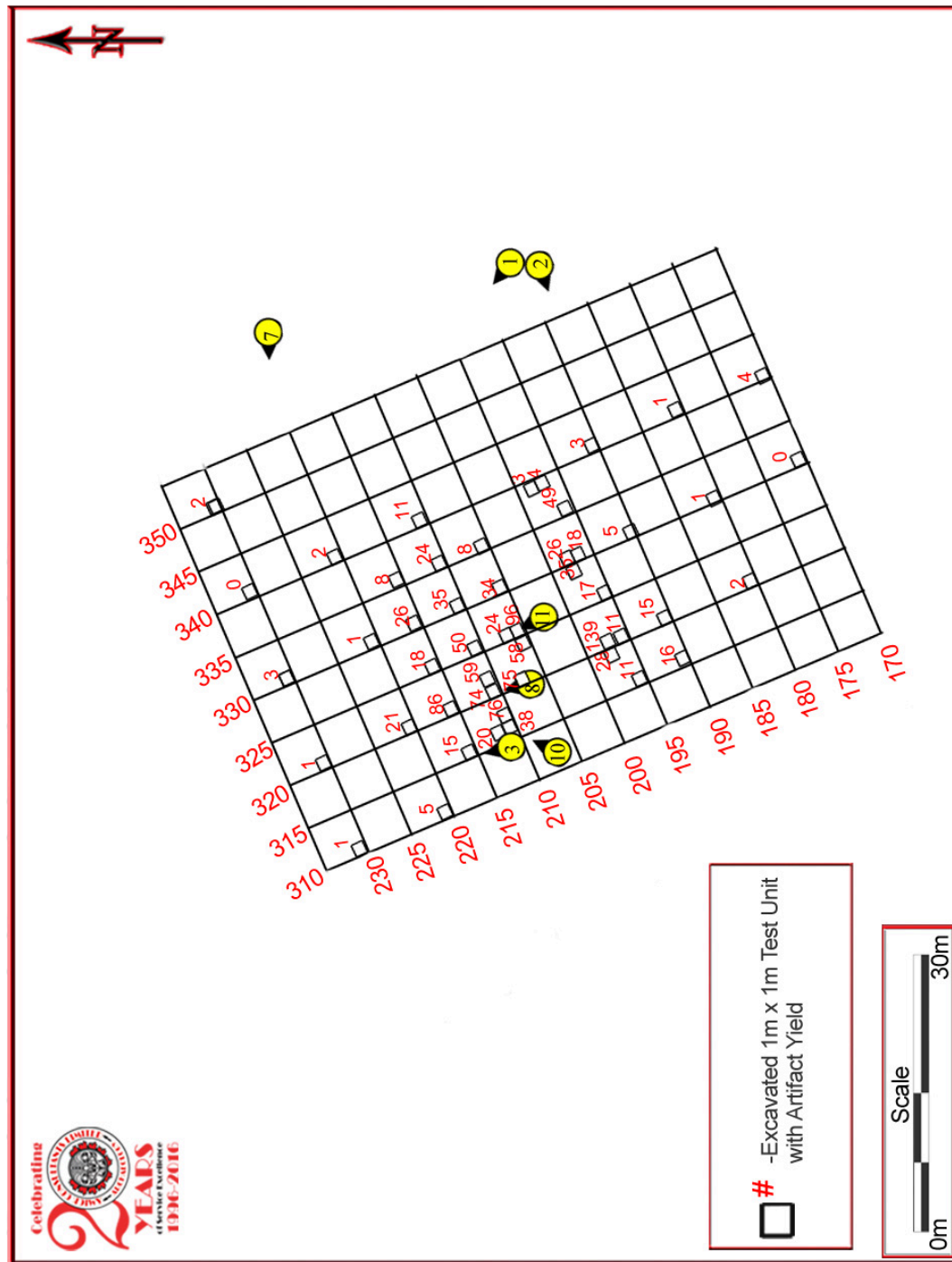


**MAP 2 FACSIMILE SEGMENT OF ILLUSTRATED HISTORICAL ATLAS OF THE COUNTY OF
GREY
(BELDEN & CO., 1880)**





MAP 4 LOON 1 (BDHD-23) SITE EAST LOCI STAGE 3 TEST UNIT EXCAVATIONS SHOWING ARTIFACT YIELDS



MAP 5 LOON 1 (BdHd-23) SITE WEST LOCI STAGE 3 TEST UNIT EXCAVATIONS SHOWING ARTIFACT YIELDS

13.0 IMAGES



IMAGE 1 CREW WORKING ON TEST UNIT EXCAVATION



IMAGE 2 STUDY AREA



IMAGE 3 PLAN OF 320E 215N



IMAGE 4 PLAN OF 630E 395N



IMAGE 5 PLAN OF 623E 410N



IMAGE 6 CREW WORKING ON TEST UNIT EXCAVATION



IMAGE 7 CREW WORKING ON TEST UNIT EXCAVATION



IMAGE 8 PLAN OF 325E 210N



IMAGE 9 PLAN OF 620E 390N



IMAGE 10 WELL



IMAGE 11 PROFILE OF 325E 206N



IMAGE 12 PROFILE OF 625E 405N



IMAGE 13 REPRESENTATIVE SAMPLE OF GLASS ARTIFACTS FROM LOON 1 (BdHd-23) SITE



IMAGE 14 REPRESENTATIVE SAMPLE OF METAL AND BONE ARTIFACTS FROM LOON 1 (BDHD-23) SITE



IMAGE 14 REPRESENTATIVE SAMPLE OF CERAMIC ARTIFACTS FROM LOON 1 (BdHd-23) SITE

APPENDIX A- ARTIFACT CATALOGUE

Cat No.	Sq #	Material	Class	Type	Attribute	Form	Function	Qty	Date Range
1	310E-220N	Metal	Iron	Cut	Indeterminate	Nail	Architecture	5	1820+
2	310E-230N	Glass	Commercial	Roller Milled	Clarified	Window	Architecture	1	1870+
3	315E190N	Metal	Iron	Sheet	Strap	Strap	Indeterminate	2	Indeterminate
4	315E190N	Ceramic	Coarse Red Earthenware	Unglazed	Cyllindrical	Pipe	Architecture	1	Indeterminate
5	315E190N	Ceramic	Ironstone	Decorated	"Alfred Meakin Ltd"	Saucer	Tableware	1	1890+
6	315E190N	Glass	Commercial	Clarified	"Crown"	Jar	Storage	1	1930+
7	315E190N	Glass	Commercial	Embossed	Lines and Diamonds	Bowl	Tableware	1	Indeterminate
8	315E190N	Glass	Commercial	Indeterminate	Frosted	Stopper	Storage/Liquor	1	Indeterminate
9	315E190N	Glass	Commercial	Roller Milled	Clarified	Window	Architecture	1	1870+
10	315E190N	Glass	Commercial	Panel Bottle	Clarified	Bottle Base	Storage	1	1850+
11	315E190N	Glass	Commercial	Embossed	Waves	Bottle	Indeterminate	1	Indeterminate
12	315E190N	Ceramic	Coarse Red Earthenware	Unglazed	Indeterminate	Brick	Architecture	1	1784+
13	315E190N	Ceramic	Refined White Earthenware	Undecorated	Indeterminate	Fragments	Indeterminate	2	1820+
14	315E190N	Glass	Commercial	Cylindrical	Brown	Bottle	Storage	1	1900+

ORIGINAL 31 August 2020 Stage 3 Site-specific Assessment of the Loon 1 (Bdhd-23) Site within 206105 Highway 26, Part of Lot 19, Concession 6 (Geographic Township of St. Vincent, County of Grey), Municipality of Meaford, County of Grey (AMICK File #2020115/MHSTCI File #P058-1887-2020)

15	315E 190N	Metal	Iron	Wire	Indeterminate	Nail	Architecture	2	1890+
16	315E 195N	Metal	Iron	Wire	Indeterminate	Nail	Architecture	3	1890+
17	315E 195N	Metal	Iron	Wire	Indeterminate	Wire	Agricultural	1	Indeterminate
18	315E 195N	Glass	Commercial	Cylindrical	Black	Fragment	Indeterminate	2	1870+
19	315E 195N	Glass	Commercial	Cylindrical	Magenta "HK"	Bottle Base	Storage	1	1880+
20	315E 195N	Glass	Commercial	Club Sauce	Brown	Stopper	Storage	1	1870-1930
21	315E 195N	Ceramic	Refined White Earthenware	Undecorated	Indeterminate	Fragment	Indeterminate	2	1820+
22	315E 195N	Glass	Commercial	Cylindrical	Crown closure	Bottle	Storage	1	1890+
23	315E 215N	Bone	Mammal	Indeterminate	Indeterminate	Bone	Food	3	Indeterminate
24	315E 215N	Metal	Iron	Wire	Indeterminate	Nail	Architecture	3	1890+
25	315E 215N	Ceramic	Refined White Earthenware	Undecorated	Indeterminate	Teacup	Tableware	2	1820+
26	315E 215N	Ceramic	Refined Yellow Earthenware	Unglazed	Indeterminate	Fragment	Indeterminate	1	1830-1940
27	315E 215N	Glass	Commercial	Panel Bottle	Clear	Bottle Base	Storage	1	1850+
28	315E 215N	Glass	Commercial	Panel Bottle	Brown	Mouth and Neck	Storage	2	1850+
29	315E	Glass	Commercial	Roller Milled	Clarified	Window	Architecture	1	1870+

ORIGINAL 31 August 2020 Stage 3 Site-specific Assessment of the Loon 1 (Bdhd-23) Site within 206105 Highway 26, Part of Lot 19, Concession 6 (Geographic Township of St. Vincent, County of Grey), Municipality of Meaford, County of Grey (AMICK File #2020115/MHSTCI File #P058-1887-2020)

30	215N 315E	Ceramic	Porcelain	Unglazed	Indeterminate	Electrical Tube	Electrical	2	1900+
31	215N 316E	Bone	Mammal	Indeterminate	Indeterminate	Bone	Food	3	Indeterminate
32	211N 316E	Glass	Commercial	Panel Bottle	Clear	Bottle	Storage	2	1850+
33	211N 316E	Glass	Commercial	Threaded	"Burnett's"	Bottle	Liquor	1	1950+
34	211N 316E	Glass	Commercial	Cylindrical	"Underwood's"	Inkwell	Writing	1	1880+
35	211N 316E	Ceramic	Refined White Earthenware	Undecorated	Indeterminate	Cup	Tableware	2	1820+
36	316E 211N	Ceramic	Ivory Ware	Undecorated	"Old Hall Ivory Ware England"	Teacup	Tableware	1	1930+
37	316E 211N	Metal	Iron	Wire	Indeterminate	Nail	Architecture	9	1890+
38	316E 211N	Metal	Iron	Cast	Circular	Chain Link	Medicinal	1	Indeterminate
39	316E- 210N	Ceramic	Refined White Earthenware	Undecorated	Clear Glazed	cup	Tableware	10	1820+
40	316E- 210N	Bone	Mammal	Indeterminate	Indeterminate	Bone	Food	5	Indeterminate
41	316E- 210N	Metal	Iron	Wire	Indeterminate	Nail	Architecture	12	1870+
42	316E- 210N	Metal	Iron	Cut	Indeterminate	Nail	Architecture	6	1820+
43	316E- 210N	Glass	Commercial	Roller Milled	Clarified	Window	Architecture	5	1870+
44	317E	Bone	Mammal	Indeterminate	Indeterminate	Bone	Food	5	Indeterminate

ORIGINAL 31 August 2020 Stage 3 Site-specific Assessment of the Loon 1 (Bdhd-23) Site within 206105 Highway 26, Part of Lot 19, Concession 6 (Geographic Township of St. Vincent, County of Grey), Municipality of Meaford, County of Grey (AMICK File #2020115/MHSTCI File #P058-1887-2020)

45	210N 317E	Metal	Iron	Wire	Indeterminate	Nail	Architecture	35	1890+
46	210N 317E	Metal	Iron	Wire	Indeterminate	Wire	Indeterminate	1	Indeterminate
47	210N 317E	Metal	Iron	Sheet	Indeterminate	Fragment	Indeterminate	2	Indeterminate
48	210N 317E	Ceramic	Refined White Earthenware	Undecorated	Indeterminate	Fragment	Indeterminate	5	1820+
49	210N 317E	Glass	Commercial	Roller Milled	Clarified	Window	Architecture	26	1870+
50	210N 317E	Glass	Commercial	Panel Bottle	Clear	Fragment	Indeterminate	1	Indeterminate
51	210N 317E	Glass	Commercial	Cylindrical	Magenta Tint	Bottle	Indeterminate	1	1870-1930
52	197N 319E	Bone	Mammal	Indeterminate	Indeterminate	Bone	Food	8	Indeterminate
53	197N 319E	Metal	Iron	Wire	Indeterminate	Nail	Architecture	11	1890+
54	197N 319E	Metal	Iron	Cylindrical	Indeterminate	Fragment	Indeterminate	1	Indeterminate
55	197N 319E	Ceramic	Refined White Earthenware	Undecorated	Indeterminate	Mug	Tableware	5	1820+
56	197N 319E	Glass	Commercial	Cylindrical	Clear	Fragment	Indeterminate	2	1850+
57	197N 319E	Glass	Commercial	Patent Lip	Clear	Lip	Medicinal	1	1890-1930
58	195N 320E	Ceramic	Refined White Earthenware	Undecorated	Indeterminate	Fragment	Indeterminate	4	1820+

ORIGINAL 31 August 2020 Stage 3 Site-specific Assessment of the Loon 1 (Bdhd-23) Site within 206105 Highway 26, Part of Lot 19, Concession 6 (Geographic Township of St. Vincent, County of Grey), Municipality of Meaford, County of Grey (AMICK File #2020115/MHSTCI File #P058-1887-2020)

59	320E 195N	Ceramic	Coarse Red Earthenware	Unglazed	Indeterminate	Fragment	Indeterminate	1	1850+
60	320E 195N	Glass	Commercial	Roller Milled	Clarified	Window	Architecture	2	1870+
61	320E 195N	Glass	Commercial	Panel Bottle	Blue	Bottle	Storage	1	1870+
62	320E 195N	Bone	Mammal	Indeterminate	Indeterminate	Bone	Food	1	Indeterminate
63	320E 195N	Metal	Iron	Cast	Circular	Ring	Indeterminate	1	Indeterminate
64	320E 195N	Metal	Iron	Cast	Oval Shaped	Chain Link	Mechanical	1	Indeterminate
65	320E 207N	Metal	Iron	Wire	Indeterminate	Nail	Architecture	55	1890+
66	320E 207N	Metal	Iron	Wire	Indeterminate	Wire	Indeterminate	2	Indeterminate
67	320E 207N	Bone	Mammal	Indeterminate	Indeterminate	Bone	Food	2	Indeterminate
68	320E 207N	Ceramic	Refined White Earthenware	Undecorated	Indeterminate	Fragment	Indeterminate	2	1820+
69	320E 207N	Glass	Commercial	Roller Milled	Clarified	Window	Architecture	6	1870+
70	320E 207N	Glass	Commercial	Cylindrical	Blue Tint	Bottle Base	Storage	2	1920+
71	320E 207N	Glass	Commercial	Indeterminate	Green	Fragment	Indeterminate	1	1900+
72	320E 207N	Glass	Commercial	Indeterminate	Clear	Fragment	Indeterminate	1	Indeterminate
73	320E 207N	Ceramic	Coarse Red Earthenware	Unglazed	Indeterminate	Fragment	Indeterminate	3	1870+
74	320E	Plastic	Commercial	Indeterminate	Circular	Fragment	Indeterminate	1	1900+

ORIGINAL 31 August 2020 Stage 3 Site-specific Assessment of the Loon 1 (Bdhd-23) Site within 206105 Highway 26, Part of Lot 19, Concession 6 (Geographic Township of St. Vincent, County of Grey), Municipality of Meaford, County of Grey (AMICK File #2020115/MHSTCI File #P058-1887-2020)

	207N								
75	320E 215N	Metal	Iron	Cast	Axle with 2 bolts	Axle	Mechanical	1	Indeterminate
76	320E 215N	Metal	Iron	Cast	Coiled	Spring	Mechanical	2	Indeterminate
77	320E 215N	Metal	Iron	Cast	Indeterminate	Strap	Indeterminate	2	Indeterminate
78	320E 215N	Metal	Iron	Wire	Indeterminate	Nail	Architecture	29	1890+
79	320E 215N	Bone	Mammal	Indeterminate	Indeterminate	Bone	Food	35	Indeterminate
80	320E 215N	Ceramic	Refined White Earthenware	Undecorated	Indeterminate	Fragments	Indeterminate	6	1820+
81	320E 215N	Glass	Commercial	Roller Milled	Clarified	Window	Architecture	9	1870+
82	320E 215N	Metal	Iron	Cast	Indeterminate	Washer	Mechanical	1	Indeterminate
83	320E 215N	Metal	Tin	Sheet	Indeterminate	Jar	Storage	1	Indeterminate
84	320E- 180N	Ceramic	Refined White Earthenware	Undecorated	Indeterminate	Fragment	Indeterminate	1	1820+
85	320E- 180N	Glass	Commercial	Indeterminate	Clear	Bottle	Storage	1	1850+
86	320E- 190N	Bone	Mammal	Indeterminate	Indeterminate	Bone	Food	2	Indeterminate
87	320E- 190N	Ceramic	Ironstone	Undecorated	Clear Glazed	Plate	Tableware	2	1860+
88	320E- 190N	Ceramic	Refined White Earthenware	Relief Mould	Clear Glazed	Fragment	Tableware	1	1820+

ORIGINAL 31 August 2020 Stage 3 Site-specific Assessment of the Loon 1 (Bdhd-23) Site within 206105 Highway 26, Part of Lot 19, Concession 6 (Geographic Township of St. Vincent, County of Grey), Municipality of Meaford, County of Grey (AMICK File #2020115/MHSTCI File #P058-1887-2020)

89	320E-190N	Metal	Iron	Wire	Indeterminate	Wire	Architecture	3	Indeterminate
90	320E-190N	Metal	Iron	Wire	Indeterminate	Nail	Architecture	2	1870+
91	320E-190N	Glass	Commercial	Roller Milled	Clarified	Window	Architecture	2	1870+
92	320E-190N	Glass	Commercial	Cylindrical	Clarified	Fragment	Storage	3	1870+
93	320E-197N	Metal	Iron	Wire	Indeterminate	Nail	Architecture	20	1870+
94	320E-197N	Metal	Iron	Wire	Indeterminate	Wire	Indeterminate	3	Indeterminate
95	320E-197N	Metal	Aluminum	Indeterminate	Indeterminate	Bottle Cap	Storage	1	1950+
96	320E-197N	Bone	Mammal	Indeterminate	Indeterminate	Bone	Food	8	Indeterminate
97	320E-197N	Glass	Commercial	Cylindrical	Clear	Fragment	Tableware	5	1870+
98	320E-197N	Glass	Commercial	Roller Milled	Indeterminate	Window	Architecture	18	1870+
99	320E-197N	Ceramic	Refined White Earthenware	Undecorated	Clear Glazed	Fragment	Tableware	1	1830+
100	320E-197N	Ceramic	Ironstone	Undecorated	Clear Glazed	Fragment	Tableware	1	1860+
101	320E-197N	Bone	Mammal	Indeterminate	Cut Marks	Fragment	Food	6	Indeterminate
102	320E-197N	Metal	Iron	Wire	Indeterminate	Nail	Architecture	57	1870+
103	320E-197N	Metal	Iron	Spikes	Indeterminate	Spikes	Architecture	3	1950+
104	320E-	Metal	Iron	Staple	Indeterminate	Staple	Farm	1	1950+

ORIGINAL 31 August 2020 Stage 3 Site-specific Assessment of the Loon 1 (Bdhd-23) Site within 206105 Highway 26, Part of Lot 19, Concession 6 (Geographic Township of St. Vincent, County of Grey), Municipality of Meaford, County of Grey (AMICK File #2020115/MHSTCI File #P058-1887-2020)

105	197N 320E-197N	Glass	Commercial	Roller Milled	Clarified	Window	Implement Architecture	9	1870+
106	320E-197N	Metal	Iron	Indeterminate	Indeterminate	Water hose attachment	Indeterminate	1	1920+
107	320E-197N	Metal	Stainless Steel	Indeterminate	Indeterminate	Spoon	Tableware	1	1870+
108	320E-197N	Metal	Iron	Indeterminate	Indeterminate	Indetermina te	Farm Implement	3	1920+
109	320E-197N	Metal	Plated Brass	Indeterminate	Indeterminate	Pipe Cap	Architecture	1	1950+
110	320E-210N	Glass	Commercial	Roller Milled	Clarified	Window	Architecture	11	1870+
111	320E-210N	Glass	Commercial	Cylindrical	Green	Bottle	Storage	7	1870+
112	320E-210N	Glass	Commercial	Cylindrical	Amber	Bottle	Storage	2	1870+
113	320E-210N	Glass	Commercial	Cylindrical	Olive Green	Bottle	Storage	2	1784+
114	320E-210N	Glass	Commercial	Cylindrical	Clear	Bottle	Storage	7	1870+
115	320E-210N	Glass	Commercial	Cylindrical	Clear	Jar	Storage	1	1870+
116	320E-210N	Glass	Commercial	Cylindrical	Clarified	Fragment	Storage	20	1870+
117	320E-210N	Glass	Commercial	3 Piece Moulded	Clarified	Medicine	Tableware	24	1870+
118	320E-220N	Bone	Mammal	Indeterminate	Indeterminate	Bone	Food	7	Indeterminate
119	320E-220N	Metal	Iron	Wire	Indeterminate	Wire	Architecture	3	Indeterminate
120	320E-	Metal	Iron	Wire	Indeterminate	Nail	Architecture	9	1870+

ORIGINAL 31 August 2020 Stage 3 Site-specific Assessment of the Loon 1 (Bdhd-23) Site within 206105 Highway 26, Part of Lot 19, Concession 6 (Geographic Township of St. Vincent, County of Grey), Municipality of Meaford, County of Grey (AMICK File #2020115/MHSTCI File #P058-1887-2020)

121	220N 320E- 220N	Ceramic	Refined White Earthenware	Transferprint	Brown	Fragment	Tableware	2	1830+
122	320E- 230N	Glass	Commercial	Roller Milled	Clarified	Window	Architecture	1	1870+
123	321E 210N	Metal	Iron	Wire	Indeterminate	Nail	Architecture	10	1890+
124	321E 210N	Metal	Iron	Sheet	Indeterminate	Saucer	Indeterminate	1	Indeterminate
125	321E 210N	Bone	Mammal	Indeterminate	Indeterminate	Bone	Food	4	Indeterminate
126	321E 210N	Glass	Commercial	Roller Milled	Clarified	Window	Architecture	28	1870+
127	321E 210N	Glass	Commercial	Panel Bottle	Clear	Bottle	Storage	9	1850+
128	321E 210N	Glass	Commercial	Threaded	Clear	Bottle	Storage	1	1850+
129	321E 210N	Glass	Commercial	Cylindrical	Olive Green	Bottle	Liquor	1	1784+
130	321E 210N	Ceramic	Refined White Earthenware	Undecorated	Indeterminate	Fragment	Indeterminate	4	1820+
131	321E 210N	Ceramic	Refined White Earthenware	Transferprint	Brown	Cup	Tableware	1	1820+
132	324E 205N	Bone	Mammal	Indeterminate	Indeterminate	Bone	Food	1	Indeterminate
133	324E 205N	Glass	Commercial	Roller Milled	Clarified	Window	Architecture	15	1870+
134	324E 205N	Glass	Commercial	Cylindrical	Green	Fragment	Indeterminate	2	Indeterminate

ORIGINAL 31 August 2020 Stage 3 Site-specific Assessment of the Loon 1 (Bdhd-23) Site within 206105 Highway 26, Part of Lot 19, Concession 6 (Geographic Township of St. Vincent, County of Grey), Municipality of Meaford, County of Grey (AMICK File #2020115/MHSTCI File #P058-1887-2020)

135	324E 205N	Glass	Commercial	Cylindrical	Brown	Bottle	Storage	1	1900+
136	324E 205N	Ceramic	Refined White Earthenware	Undecorated	Indeterminate	Cup	Tableware	7	1820+
137	324E 205N	Metal	Iron	Wire	Indeterminate	Nail	Architecture	25	1890+
138	324E 205N	Metal	Iron	Cast	Indeterminate	Fragment	Indeterminate	4	Indeterminate
139	324E 205N	Metal	Iron	Cast	U-shaped	Fence Wire	Agricultural	1	1900+
140	324E 205N	Metal	Iron	Indeterminate	Indeterminate	Barbed Wire	Agricultural	1	Indeterminate
141	324E 205N	Metal	Iron	Indeterminate	Indeterminate	Bolt	Indeterminate	1	Indeterminate
142	325E 205N	Bone	Mammal	Indeterminate	Indeterminate	Bone	Food	4	Indeterminate
143	325E 205N	Glass	Commercial	Roller Milled	Clarified	Window	Architecture	22	1870+
144	325E 205N	Glass	Commercial	Panel Bottle	Clear	Bottle	Storage	12	1850+
145	325E 205N	Glass	Commercial	Cylindrical	Black	Fragment	Indeterminate	1	1850+
146	325E 205N	Glass	Commercial	Cylindrical	Brown	Bottle	Storage	1	1900+
147	325E 205N	Ceramic	Refined White Earthenware	Undecorated	Indeterminate	Teacup	Tableware	23	1820+
148	325E 205N	Ceramic	Refined White Earthenware	Transferprint	Blue	Plate	Tableware	1	1820+
149	325E	Ceramic	Refined	Unglazed	Indeterminate	Fragment	Indeterminate	1	1830-1940

ORIGINAL 31 August 2020 Stage 3 Site-specific Assessment of the Loon 1 (Bdhd-23) Site within 206105 Highway 26, Part of Lot 19, Concession 6 (Geographic Township of St. Vincent, County of Grey), Municipality of Meaford, County of Grey (AMICK File #2020115/MHSTCI File #P058-1887-2020)

	205N		Yellow Earthenware						
150	325E 205N	Metal	Iron	Wire	Indeterminate	Nail	Architecture	28	1890+
151	325E 205N	Metal	Iron	Sheet	Indeterminate	Strap	Indeterminate	3	Indeterminate
152	325E 206N	Bone	Mammal	Indeterminate	Indeterminate	Bone	Food	1	Indeterminate
153	325E 206N	Ceramic	Refined White Earthenware	Undecorated	Indeterminate	Teacup	Tableware	4	1820+
154	325E 206N	Ceramic	Refined White Earthenware	Handpainted	Red Line	Bowl	Tableware	1	1820+
155	325E 206N	Glass	Commercial	Roller Milled	Clarified	Window	Architecture	3	1870+
156	325E 206N	Metal	Iron	Wire	Indeterminate	Nail	Architecture	11	1870+
157	325E 206N	Metal	Iron	Sheet	Indeterminate	Fragment	Indeterminate	2	Indeterminate
158	325E 206N	Metal	Iron	Cast	Indeterminate	Stake	Agricultural	1	1890+
159	325E 206N	Metal	Iron	Cast	Threaded	Bolt	Mechanical	1	1860+
160	325E 210N	Bone	Mammal	Indeterminate	Indeterminate	Bone	Food	2	Indeterminate
161	325E 210N	Ceramic	Refined White Earthenware	Relief Mould	Dots	Saucer	Tableware	3	1820+
162	325E 210N	Ceramic	Refined White Earthenware	Undecorated	Indeterminate	Fragment	Indeterminate	1	1820+

ORIGINAL 31 August 2020 Stage 3 Site-specific Assessment of the Loon 1 (Bdhd-23) Site within 206105 Highway 26, Part of Lot 19, Concession 6 (Geographic Township of St. Vincent, County of Grey), Municipality of Meaford, County of Grey (AMICK File #2020115/MHSTCI File #P058-1887-2020)

163	325E 210N	Metal	Iron	Sheet	Indeterminate	Fragment	Indeterminate	1	Indeterminate
164	325E 210N	Metal	Brass	Indeterminate	Frame Style	Belt Buckle	Clothing	1	Indeterminate
165	325E 210N	Metal	Iron	Wire	Indeterminate	Nail	Architecture	18	1890+
166	325E 210N	Glass	Commercial	Embossed	Diagonal Lines	Vase	Tableware	1	1850+
167	325E 210N	Glass	Commercial	Roller Milled	Clarified	Window	Architecture	12	1870+
168	325E 210N	Glass	Commercial	Cylindrical	Clarified	Fragment	Indeterminate	8	1850+
169	325E 210N	Glass	Commercial	Cylindrical	Brown	Bottle	Indeterminate	1	1850+
170	325E 210N	Glass	Commercial	Panel Bottle	Blue Tint	Bottle	Storage	2	1850+
171	325E 215N	Metal	Iron	Wire	Indeterminate	Nail	Architecture	7	1870+
172	325E 215N	Bone	Mammal	Indeterminate	Indeterminate	Bone	Food	4	Indeterminate
173	325E 215N	Glass	Commercial	Roller Milled	Clarified	Window	Architecture	4	1870+
174	325E 215N	Glass	Commercial	Cylindrical	Brown	Bottle	Storage/Liquor	1	1850+
175	325E 215N	Ceramic	Refined White Earthenware	Undecorated	Indeterminate	Fragment	Indeterminate	2	1820+
176	325E- 195N	Bone	Mammal	Indeterminate	Cut Marks	Bone	Food	5	Indeterminate
177	325E- 195N	Glass	Commercial	Cylindrical	Clarified	Fragment	Storage	3	1870+
178	325E-	Glass	Commercial	Roller Milled	Clarified	Window	Architecture	3	1870+

ORIGINAL 31 August 2020 Stage 3 Site-specific Assessment of the Loon 1 (Bdhd-23) Site within 206105 Highway 26, Part of Lot 19, Concession 6 (Geographic Township of St. Vincent, County of Grey), Municipality of Meaford, County of Grey (AMICK File #2020115/MHSTCI File #P058-1887-2020)

179	195N 325E- 195N	Ceramic	Ironstone	Undecorated	Clear Glazed	Fragment	Tableware	2	1860+
180	325E- 195N	Ceramic	Refined White Earthenware	Undecorated	Clear Glazed	Cup Handle	Tableware	1	1820+
181	325E- 195N	Plastic	Synthetic Polymer	Black	Indeterminate	Comb	Personal	1	1950+
182	325E- 195N	Metal	Iron	Wire	Indeterminate	Nail	Architecture	2	1870+
183	329E 197N	Bone	Mammal	Indeterminate	Indeterminate	Bone	Food	12	Indeterminate
184	329E 197N	Ceramic	Refined White Earthenware	Undecorated	Indeterminate	Bowl	Tableware	16	1820+
185	329E 197N	Ceramic	Coarse Red Earthenware	Unglazed	Indeterminate	Fragments	Indeterminate	1	1840+
186	329E 197N	Metal	Iron	Wire	Indeterminate	Nail	Architecture	2	1890+
187	329E 197N	Glass	Commercial	Roller Milled	Clarified	Window	Architecture	2	1870+
188	329E 197N	Glass	Commercial	Cylindrical	Clear	Bottle	Indeterminate	1	Indeterminate
189	329E 197N	Glass	Commercial	Cylindrical	Magenta	Bottle	Storage	1	1870-1930
190	330E 205N	Bone	Mammal	Indeterminate	Indeterminate	Bone	Food	1	Indeterminate
191	330E 205N	Metal	Iron	Wire	Indeterminate	Nail	Architecture	11	1890+
192	330E 205N	Metal	Iron	Wire	Indeterminate	Wire	Architecture	3	Indeterminate
193	330E	Metal	Iron	Cast	Indeterminate	Fragment	Indeterminate	3	Indeterminate

ORIGINAL 31 August 2020 Stage 3 Site-specific Assessment of the Loon 1 (Bdhd-23) Site within 206105 Highway 26, Part of Lot 19, Concession 6 (Geographic Township of St. Vincent, County of Grey), Municipality of Meaford, County of Grey (AMICK File #2020115/MHSTCI File #P058-1887-2020)

194	205N 330E	Glass	Commercial	Cylindrical	Olive Green	Bottle	Liquor	1	1784+
195	205N 330E	Glass	Commercial	Roller Milled	Clarified	Window	Architecture	7	1870+
196	205N 330E	Glass	Commercial	Cylindrical	Blue Tint	Fragment	Indeterminate	1	Indeterminate
197	205N 330E	Glass	Commercial	Cylindrical	Magenta Tint	Fragment	Indeterminate	1	1870-1930
198	205N 330E	Ceramic	Refined White Earthenware	Undecorated	Indeterminate	Plate	Tableware	6	1820+
199	205N 330E	Metal	Iron	Wire	Indeterminate	Wire	Indeterminate	3	Indeterminate
200	215N 330E	Metal	Iron	Wire	Indeterminate	Nail	Architecture	7	1890+
201	215N 330E	Metal	Iron	Threaded	Indeterminate	Bolt	Mechanical	4	1860+
202	215N 330E	Metal	Iron	Indeterminate	Square Frame	Chain Link	Mechanical	1	Indeterminate
203	215N 330E	Metal	Iron	Cast	Circular with rounded heads	Cogwheel	Mechanical	1	Indeterminate
204	215N 330E	Metal	Brass	Cast	Indeterminate	Sleigh Bell	Agricultural	4	Indeterminate
205	215N 330E	Glass	Commercial	Roller Milled	Clarified	Window	Architecture	4	1870+
206	215N 330E	Ceramic	Refined White Earthenware	Undecorated	Indeterminate	Mug	Tableware	2	1820+
207	330E- 170N	Sterile						0	
208	330E-	Metal	Iron	Wire	Indeterminate	Nail	Architecture	1	1870+

ORIGINAL 31 August 2020 Stage 3 Site-specific Assessment of the Loon 1 (Bdhd-23) Site within 206105 Highway 26, Part of Lot 19, Concession 6 (Geographic Township of St. Vincent, County of Grey), Municipality of Meaford, County of Grey (AMICK File #2020115/MHSTCI File #P058-1887-2020)

209	180N 330E-190N	Ceramic	Porcelain	Undecorated	Clear Glazed	Plate	Tableware	5	1890+
210	330E-196N	Glass	Commercial	Roller Milled	Clarified	Window	Architecture	1	1870+
211	330E-196N	Metal	Iron	Wire	Indeterminate	Nail	Architecture	8	1870+
212	330E-196N	Metal	Iron	Wire	Indeterminate	Wire	Architecture	7	Indeterminate
213	330E-196N	Bone	Mammal	Indeterminate	Indeterminate	Bone	Food	1	Indeterminate
214	330E-196N	Ceramic	White Ball Clay	Undecorated	Unglazed	Bowl	Personal	1	1830-1930
215	330E-197N	Ceramic	Refined White Earthenware	Undecorated	Indeterminate	Saucer	Tableware	2	1820+
216	330E-197N	Bone	Mammal	Indeterminate	Cut Marks	Bone	Food	5	Indeterminate
217	330E-197N	Metal	Iron	Wire	Indeterminate	Wire	Architecture	5	Indeterminate
218	330E-197N	Metal	Iron	Wire	Indeterminate	Nail	Architecture	4	1870+
219	330E-197N	Glass	Commercial	Circular	Clarified	Stopper	Storage	2	1870+
220	330E-197N	Glass	Commercial	Cylindrical	Clarified	Bottle	Storage	4	1870+
221	330E-197N	Ceramic	Coarse Red Earthenware	Unglazed	Unglazed	Flower Pot	Horticulture	4	1850+
222	330E-210N	Glass	Commercial	Cylindrical	Clear	Fragment	Storage	3	1870+
223	330E-210N	Glass	Commercial	Cylindrical	Amber	Indetermina te	Storage	1	1870+

ORIGINAL 31 August 2020 Stage 3 Site-specific Assessment of the Loon 1 (Bdhd-23) Site within 206105 Highway 26, Part of Lot 19, Concession 6 (Geographic Township of St. Vincent, County of Grey), Municipality of Meaford, County of Grey (AMICK File #2020115/MHSTCI File #P058-1887-2020)

224	330E-210N	Glass	Commercial	Roller Milled	Clarified	Window	Architecture	14	1870+
225	330E-210N	Bone	Mammal	Indeterminate	Cut Marks	Bone	Food	2	Indeterminate
226	330E-210N	Ceramic	Refined White Earthenware	Undecorated	Clear Glazed	Cup	Tableware	1	1830+
227	330E-210N	Ceramic	Refined White Earthenware	Transferprint	Purple	Plate	Tableware	1	1830+
228	330E-210N	Plastic	Plastic	Undecorated	White	Stopper	Indeterminate	1	1950+
229	330E-210N	Metal	Iron	Wire	Indeterminate	Nail	Architecture	11	1870+
230	330E-210N	Metal	Iron	Cut	Indeterminate	Nail	Architecture	1	1820+
231	330E-220N	Glass	Commercial	Cylindrical	Clear	Bottle	Storage	1	1870+
232	330E-230N	Glass	Commercial	Cylindrical	Clarified	Bottle	Storage	1	1870+
233	330E-230N	Ceramic	Refined White Earthenware	Undecorated	Indeterminate	Plate	Tableware	2	1820+
234	335E 195N	Ceramic	Coarse Red Earthenware	Unglazed	Indeterminate	Fragment	Indeterminate	3	1850+
235	335E 195N	Ceramic	Refined White Earthenware	Undecorated	Indeterminate	Mug	Tableware	4	1820+
236	335E 195N	Glass	Commercial	Roller Milled	Clarified	Window	Architecture	3	1870+
237	335E 195N	Metal	Tin	Indeterminate	Indeterminate	Fragment	Indeterminate	2	Indeterminate

ORIGINAL 31 August 2020 Stage 3 Site-specific Assessment of the Loon 1 (Bdhd-23) Site within 206105 Highway 26, Part of Lot 19, Concession 6 (Geographic Township of St. Vincent, County of Grey), Municipality of Meaford, County of Grey (AMICK File #2020115/MHSTCI File #P058-1887-2020)

238	335E 205N	Glass	Commercial	Cylindrical	Olive Green	Bottle	Liquor	1	1784+
239	335E 205N	Glass	Commercial	Cylindrical	Brown	Bottle	Storage/Liquor	1	1850+
240	335E 205N	Glass	Commercial	Panel Bottle	Blue Tint	Bottle	Storage	1	1850+
241	335E 205N	Ceramic	Coarse Red Earthenware	Unglazed	Indeterminate	Fragment	Indeterminate	5	1850+
242	335E 210N	Bone	Mammal	Indeterminate	Indeterminate	Bone	Food	5	Indeterminate
243	335E 210N	Glass	Commercial	Circular	Green	Bottle	Storage	1	1900+
244	335E 210N	Metal	Iron	Wire	Indeterminate	Nail	Architecture	16	1890+
245	335E 210N	Metal	Iron	Wire	Indeterminate	Fence Wire	Agricultural	1	Indeterminate
246	335E 210N	Ceramic	Refined White Earthenware	Undecorated	Indeterminate	Fragment	Indeterminate	1	1820+
247	335E 215N	Ceramic	Refined White Earthenware	Undecorated	Indeterminate	Mug	Tableware	5	1820+
248	335E 215N	Glass	Commercial	Roller Milled	Clarified	Window	Architecture	1	1870+
249	335E 215N	Metal	Iron	Wire	Indeterminate	Nail	Architecture	1	1890+
250	335E 215N	Glass	Commercial	Club Sauce Type	Brown	Stopper	Storage	1	1870-1930
251	335E- 195N	Metal	Iron	Wire	Indeterminate	Nail	Architecture	2	1870+
252	335E- 195N	Bone	Mammal	Indeterminate	Cut Marks	Bone	Food	3	Indeterminate

ORIGINAL 31 August 2020 Stage 3 Site-specific Assessment of the Loon 1 (Bdhd-23) Site within 206105 Highway 26, Part of Lot 19, Concession 6 (Geographic Township of St. Vincent, County of Grey), Municipality of Meaford, County of Grey (AMICK File #2020115/MHSTCI File #P058-1887-2020)

253	335E-195N	Ceramic	Ironstone	Relief Mould	Clear Glazed	Plate	Tableware	1	1860+
254	335E-195N	Ceramic	Porcelain	Relief Mould	Indeterminate	Fragment	Tableware	3	1890+
255	335E-195N	Ceramic	Ironstone	Undecorated	Clear Glazed	Plate	Tableware	3	1860+
256	335E-195N	Ceramic	Refined White Earthenware	Undecorated	Clear Glazed	Fragment	Tableware	7	1820+
257	335E-195N	Ceramic	Refined White Earthenware	Undecorated	Clear Glazed	Cup Handle	Tableware	1	1820+
258	339E-196N	Metal	Iron	Wire	Indeterminate	Wire	Architecture	2	1890+
259	339E-196N	Glass	Commercial	Roller Milled	Clarified	Window	Architecture	2	1870+
260	339E-197N	Ceramic	Ironstone	Relief Mould	Clear Glazed	Cup	Tableware	3	1860+
261	340E-170N	Ceramic	Refined White Earthenware	Transferprint	Floe Blue	Fragment	Tableware	1	1870-1930
262	340E-170N	Ceramic	Refined White Earthenware	Undecorated	Indeterminate	Fragment	Tableware	1	1820+
263	340E-170N	Glass	Commercial	Roller Milled	Clarified	Window	Architecture	1	1870+
264	340E-170N	Ceramic	Ironstone	Undecorated	Clear Glazed	Teacup	Tableware	1	1860+
265	340E-180N	Metal	Iron	Wire	Indeterminate	Chain Link	Mechanical	1	1950+
266	340E-190N	Bone	Mammal	Indeterminate	Indeterminate	Bone	Food	1	Indeterminate

ORIGINAL 31 August 2020 Stage 3 Site-specific Assessment of the Loon 1 (Bdhd-23) Site within 206105 Highway 26, Part of Lot 19, Concession 6 (Geographic Township of St. Vincent, County of Grey), Municipality of Meaford, County of Grey (AMICK File #2020115/MHSTCI File #P058-1887-2020)

267	340E-190N	Glass	Commercial	Roller Milled	Clear	Window	Architecture	2	1870+
268	340E-210N	Metal	Iron	Wire	Indeterminate	Nail	Architecture	6	1870+
269	340E-210N	Metal	Iron	Cut	Indeterminate	Nail	Architecture	1	1820+
270	340E-210N	Bone	Mammal	Indeterminate	Indeterminate	Bone	Food	1	Indeterminate
271	340E-210N	Glass	Commercial	Roller Milled	Clarified	Window	Architecture	3	1870+
272	340E-220N	Metal	Iron	Wire	Indeterminate	Nail	Architecture	1	1870+
273	340E-220N	Metal	Iron	Wire	Indeterminate	Wire	Architecture	1	Indeterminate
274	340E-230N	Sterile						0	
275	350E-230N	Glass	Window	Roller Milled	Clarified	Window	Architecture	1	1870+
276	350E-230N	Ceramic	Refined White Earthenware	Undecorated	Indeterminate	Fragment	Tableware	1	1820+
277	610E-410N	Bone	Mammal	Indeterminate	Indeterminate	Indeterminate	Food	1	Indeterminate
278	610E-410N	Plastic	Baked	Indeterminate	Toothed	Hair Comb	Fashion	1	1900+
279	610E-410N	Ceramic	Porcelain	Parian	Face	Doll	Entertainment	1	1860+
280	610E-410N	Ceramic	Refined White Earthenware	Undecorated	Indeterminate	Bowl	Tableware	1	1820+
281	610E-410N	Glass	Commercial	Threaded	Blue Tint	Jar	Storage	1	1850+

ORIGINAL 31 August 2020 Stage 3 Site-specific Assessment of the Loon 1 (Bdhd-23) Site within 206105 Highway 26, Part of Lot 19, Concession 6 (Geographic Township of St. Vincent, County of Grey), Municipality of Meaford, County of Grey (AMICK File #2020115/MHSTCI File #P058-1887-2020)

282	610E 410N	Glass	Commercial	Cylindrical	Olive Green	Bottle	Liquor	2	1784+
283	610E 410N	Metal	Iron	Cast	O-Shaped	Ring	Mechanical	1	Indeterminate
670	613E 410N	Glass	Commercial	Cylindrical	Blue Tint	Bottle	Storage	10	1850+
671	613E 410N	Ceramic	Ironstone	Undecorated	Indeterminate	Pitcher	Tableware	2	1860+
672	613E 410N	Ceramic	Ironstone	Undecorated	Indeterminate	Bowl	Tableware	26	1860+
673	613E 410N	Bone	Mammal	Indeterminate	Indeterminate	Indetermina te	Food	10	Indeterminate
674	613E 410N	Glass	Commercial	Panel Bottle	Clear	Bottle	Storage	14	1850+
675	613E 410N	Glass	Commercial	Club Sauce	Clear	Stopper	Storage/Liquor	1	1870-1930
676	613E 410N	Glass	Commercial	Cylindrical	Green	Bottle	Storage/Liquor	12	1900+
677	613E 410N	Glass	Commercial	Panel Bottle	Brown	Bottle	Storage	8	1860+
678	613E 410N	Glass	Commercial	Cylindrical	Magenta	Bottle	Storage	9	1650+
679	613E 410N	Metal	Copper	Indeterminate	Indeterminate	Rivets	Clothing	2	1870+
284	613E 390N	Ceramic	Refined White Earthenware	Undecorated	Indeterminate	Plate	Tableware	4	1820+
285	613E 390N	Ceramic	Refined White Earthenware	Undecorated	Indeterminate	Teacup Handle	Tableware	1	1820+
286	613E 390N	Ceramic	Refined Yellow	Glazed	Clear Glaze	Fragment	Kitchenware	2	1830-1940

ORIGINAL 31 August 2020 Stage 3 Site-specific Assessment of the Loon 1 (Bdhd-23) Site within 206105 Highway 26, Part of Lot 19, Concession 6 (Geographic Township of St. Vincent, County of Grey), Municipality of Meaford, County of Grey (AMICK File #2020115/MHSTCI File #P058-1887-2020)

287	613E 395N	Ceramic	Earthenware Porcelain	Parian	Foot	Doll	Entertainment	1	1860+
288	613E 395N	Ceramic	Refined White Earthenware	Undecorated	Indeterminate	Mug	Tableware	4	1820+
289	613E 395N	Ceramic	Refined White Earthenware	Transferprint	Black	Teacup	Tableware	1	1820+
290	613E 395N	Ceramic	Coarse Red Earthenware	Unglazed	Indeterminate	Fragment	Indeterminate	1	1840+
291	613E 395N	Metal	Iron	Wire	Indeterminate	Nail	Architecture	2	1890+
292	613E 395N	Glass	Commercial	Cylindrical	Brown	Bottle	Storage/Liquor	1	1900+
293	613E 395N	Glass	Commercial	Panel Bottle	Blue Tint	Bottle	Storage	1	1850+
294	613E 405N	Ceramic	Refined White Earthenware	Undecorated	Indeterminate	Mug	Tableware	4	1820+
295	613E 405N	Ceramic	Coarse Red Earthenware	Glazed	Clear Glaze	Crock	Kitchenware	1	1840+
296	613E 405N	Plastic	Baked	Indeterminate	White	Clip	Mechanical	1	1900+
297	613E 405N	Bone	Mammal	Indeterminate	Indeterminate	Indetermina te	Food	1	Indeterminate
298	613E 405N	Metal	Copper	Indeterminate	Cylindrical	Tube	Mechanical	1	1940+
299	613E 405N	Glass	Commercial	Cylindrical	Clarified	Bottle	Storage	4	1850+
300	615E 375N	Ceramic	Refined White	Undecorated	Indeterminate	Plate	Tableware	5	1820+

ORIGINAL 31 August 2020 Stage 3 Site-specific Assessment of the Loon 1 (Bdhd-23) Site within 206105 Highway 26, Part of Lot 19, Concession 6 (Geographic Township of St. Vincent, County of Grey), Municipality of Meaford, County of Grey (AMICK File #2020115/MHSTCI File #P058-1887-2020)

301	615E 375N	Glass	Earthenware Commercial	Roller Milled	Clarified	Window	Architecture	1	1870+
302	615E 375N	Bone	Mammal	Indeterminate	Indeterminate	Indetermina te	Food	1	Indeterminate
303	615E 375N	Glass	Commercial	Cylindrical	Clear	Bottle Neck	Storage	1	1850+
304	615E 380N	Ceramic	Ironstone	Makers Mark	"J. Wedgewood"	Plate	Tableware	1	1840-1860
305	615E 380N	Ceramic	Porcelain	Undecorated	Indeterminate	Teacup	Tableware	2	1890+
306	615E 380N	Ceramic	Refined White Earthenware	Undecorated	Indeterminate	Mug	Tableware	4	1820+
307	615E 380N	Ceramic	Refined White Earthenware	Handpainted	Blue	Fragment	Indeterminate	1	1820+
308	615E 380N	Glass	Commercial	Roller Milled	Clarified	Window	Architecture	2	1870+
309	615E 380N	Glass	Commercial	Cylindrical	Brown	Bottle	Storage	1	1900+
310	615E 380N	Ceramic	Coarse Red Earthenware	Unglazed	Indeterminate	Brick	Architecture	3	1784+
311	615E 380N	Metal	Iron	Wire	Indeterminate	Nail	Architecture	3	1890+
312	615E 380N	Metal	Iron	Cut	Indeterminate	Nail	Architecture	1	1825-1890
313	615E 385N	Bone	Mammal	Indeterminate	Indeterminate	Indetermina te	Food	7	Indeterminate
314	615E 385N	Glass	Commercial	Roller Milled	Clarified	Window	Architecture	11	1870+
315	615E	Glass	Commercial	Cylindrical	Blue Tint	Bottle	Storage	1	1850+

ORIGINAL 31 August 2020 Stage 3 Site-specific Assessment of the Loon 1 (Bdhd-23) Site within 206105 Highway 26, Part of Lot 19, Concession 6 (Geographic Township of St. Vincent, County of Grey), Municipality of Meaford, County of Grey (AMICK File #2020115/MHSTCI File #P058-1887-2020)

316	385N 615E 385N	Ceramic	Refined White Earthenware	Undecorated	Indeterminate	Fragment	Indeterminate	14	1820+
317	615E 385N	Ceramic	Refined Yellow Earthenware	Glazed	Clear Glaze	Fragment	Kitchenware	2	1840+
318	615E 390N	Bone	Mammal	Indeterminate	Indeterminate	Indetermina te	Food	5	Indeterminate
319	615E 390N	Ceramic	Refined Yellow Earthenware	Unglazed	Unglazed	Indetermina te	Kitchenware	6	1830-1940
320	615E 390N	Ceramic	Refined White Earthenware	Undecorated	Indeterminate	Fragment	Tableware	17	1820+
321	615E 390N	Ceramic	Refined White Earthenware	Transferprint	Brown	Bowl	Tableware	5	1820+
322	615E 390N	Glass	Commercial	Roller Milled	Clarified	Window	Architecture	9	1870+
323	615E 390N	Glass	Commercial	Cylindrical	Clear	Bottle	Storage	11	Indeterminate
324	615E 390N	Metal	Iron	Wire	Indeterminate	Nail	Architecture	6	1890+
325	615E 390N	Metal	Iron	Wire	Indeterminate	Nail	Architecture	8	1890+
326	615E 390N	Bone	Mammal	Indeterminate	Indeterminate	Indetermina te	Food	2	Indeterminate
327	615E 390N	Glass	Commercial	Roller Milled	Clarified	Window	Architecture	4	1870+
328	615E 390N	Ceramic	Refined White	Undecorated	Indeterminate	Cup	Tableware	9	1820+

ORIGINAL 31 August 2020 Stage 3 Site-specific Assessment of the Loon 1 (Bdhd-23) Site within 206105 Highway 26, Part of Lot 19, Concession 6 (Geographic Township of St. Vincent, County of Grey), Municipality of Meaford, County of Grey (AMICK File #2020115/MHSTCI File #P058-1887-2020)

329	615E 390N	Ceramic	Earthenware Refined White	Decal	White Flower	Cup	Tableware	1	1900+
330	615E 390N	Ceramic	Earthenware Refined Yellow	Glazed	Clear Glaze	Fragment	Indeterminate	4	1840+
331	615E 390N	Plastic	Earthenware Baked	White	4-Hole	Button	Clothing	1	1900+
332	615E 390N	Glass	Commercial	Cylindrical	Blue	Bottle	Storage	1	1850+
333	615E 395N	Ceramic	Refined White Earthenware	Undecorated	Indeterminate	Plate	Tableware	37	1820+
334	615E 395N	Glass	Commercial	Roller Milled	Clarified	Window	Architecture	5	1870+
335	615E 400N	Metal	Iron	Indeterminate	Flat	Bottle Opener	Food/Drink	1	1910+
336	615E 400N	Metal	Iron	Cast	Short and Fat	Key	Architecture	1	Indeterminate
337	615E 400N	Ceramic	Refined White Earthenware	Transferprint	Navy Blue	Plate	Tableware	1	1820+
338	615E 400N	Ceramic	Refined White Earthenware	Undecorated	Indeterminate	Fragment	Indeterminate	2	1820+
339	615E 400N	Ceramic	Coarse Red Earthenware	Unglazed	Indeterminate	Brick	Architecture	1	1784+
340	615E 400N	Glass	Commercial	Cylindrical	Olive Green	Bottle	Liquor	2	1784+
341	615E 400N	Glass	Commercial	Cylindrical	Clarified	Bottle	Storage	1	1850+

ORIGINAL 31 August 2020 Stage 3 Site-specific Assessment of the Loon 1 (Bdhd-23) Site within 206105 Highway 26, Part of Lot 19, Concession 6 (Geographic Township of St. Vincent, County of Grey), Municipality of Meaford, County of Grey (AMICK File #2020115/MHSTCI File #P058-1887-2020)

342	615E 405N	Ceramic	Refined White Earthenware	Transferprint	Black	Plate	Tableware	2	1820+
343	615E 405N	Ceramic	White Ball Clay	Decorated	Face	Pipe Bowl	Smoking	1	1800-1840
344	615E 405N	Ceramic	Ironstone	Relief Mould	Flower	Bowl	Tableware	1	1860+
345	615E 405N	Ceramic	Refined White Earthenware	Undecorated	Indeterminate	Fragment	Indeterminate	5	1820+
346	615E 405N	Ceramic	Coarse Red Earthenware	Glazed	Lead Glaze	Fragment	Indeterminate	5	1840+
347	615E 405N	Bone	Mammal	Polished	Hollowed	Fragment	Indeterminate	1	Indeterminate
348	615E 405N	Bone	Mammal	Indeterminate	Indeterminate	Indetermina te	Food	1	Indeterminate
349	615E 405N	Metal	Iron	Wire	Indeterminate	Nail	Architecture	9	1890+
350	615E 405N	Glass	Commercial	Embossed	Star Shape	Bowl	Tableware	4	Indeterminate
351	615E 405N	Glass	Commercial	Cylindrical	Blue Tint	Fragment	Indeterminate	3	1850+
352	615E 405N	Glass	Commercial	Cylindrical	Brown	Fragment	Indeterminate	3	1850+
353	615E 405N	Glass	Commercial	Cylindrical	Transparent Brown	Fragment	Indeterminate	1	1850+
354	615E 405N	Glass	Commercial	Cylindrical	Green	Fragment	Indeterminate	1	Indeterminate
355	615E 405N	Glass	Commercial	Cylindrical	Clear	Bottle	Indeterminate	9	Indeterminate
356	615E 405N	Ceramic	Coarse Red Earthenware	Glazed	Clear Glaze	Fragment	Indeterminate	1	1840+

ORIGINAL 31 August 2020 Stage 3 Site-specific Assessment of the Loon 1 (Bdhd-23) Site within 206105 Highway 26, Part of Lot 19, Concession 6 (Geographic Township of St. Vincent, County of Grey), Municipality of Meaford, County of Grey (AMICK File #2020115/MHSTCI File #P058-1887-2020)

357	615E 410N	Glass	Commercial	Cylindrical	Clear	Vase	Tableware	2	Indeterminate
659	615E 410N	Ceramic	Refined Yellow Earthenware	Glazed	Clear Glazed	Crock	Kitchenware	5	1840+
660	615E 410N	Ceramic	Ironstone	Undecorated	Indeterminate	Serving Dish	Tableware	26	1860+
661	615E 410N	Glass	Commercial	Cylindrical	Clear	Bottle	Storage	3	1850+
662	615E 410N	Glass	Commercial	Roller Milled	Clarified	Window	Architecture	8	1870+
663	615E 410N	Ceramic	Refined Yellow Earthenware	Rockingham	Indeterminate	Pitcher	Tableware	1	1830+
664	615E 410N	Bone	Mammal	Indeterminate	Indeterminate	Indetermina te	Food	24	Indeterminate
665	615E 410N	Metal	Iron	Wire	Indeterminate	Nail	Architecture	26	1890+
666	615E 410N	Glass	Commercial	Threaded	Clear	Jar	Storage	1	1860+
667	615E 410N	Metal	Steel	Coiled	Circular	Spring	Mechanical	6	1860+
668	615E 410N	Metal	Copper	Indeterminate	Indeterminate	Shotgun Shell	Ammunition	1	1880+
669	615E 410N	Metal	Copper	Indeterminate	Indeterminate	Rivets	Clothing	1	1870+
358	615E 415N	Ceramic	Ironstone	Undecorated	Indeterminate	Plate	Tableware	4	1860+
359	615E 415N	Glass	Commercial	Cylindrical	Blue Tint	Bottle	Storage	2	1850+
360	615E 415N	Glass	Commercial	Cylindrical	Brown	Bottle	Storage	1	1900+

ORIGINAL 31 August 2020 Stage 3 Site-specific Assessment of the Loon 1 (Bdhd-23) Site within 206105 Highway 26, Part of Lot 19, Concession 6 (Geographic Township of St. Vincent, County of Grey), Municipality of Meaford, County of Grey (AMICK File #2020115/MHSTCI File #P058-1887-2020)

361	615E 415N	Glass	Commercial	Cylindrical	Magenta	Bottle	Storage	1	1850+
362	615E 415N	Glass	Commercial	Cylindrical	Olive Green	Bottle	Liquor	1	1784+
363	618E 380N	Ceramic	Refined White Earthenware	Undecorated	Indeterminate	Plate	Tableware	19	1820+
364	618E 380N	Glass	Commercial	Cylindrical	Olive Green	Bottle	Liquor	3	1784+
365	618E 380N	Ceramic	Refined White Earthenware	Transferprint	Blue	Plate	Tableware	1	1820+
366	618E 380N	Glass	Commercial	Cylindrical	Magenta	Bottle	Storage	5	1870-1930
367	618E 380N	Glass	Commercial	Cylindrical	Blue Tint	Bottle	Storage	2	1850+
368	618E 380N	Plastic	Baked	Indeterminate	4-Hole	Button	Clothing	1	1900+
369	618E 405N	Glass	Commercial	Cylindrical	Clear w/ Crown	Mason Jar	Storage	3	1850+
370	620E 360N	Metal	Iron	Wire	Indeterminate	Nail	Architecture	1	1890+
371	620E 360N	Glass	Commercial	Roller Milled	Clarified	Window	Architecture	1	1870+
372	620E 370N	Ceramic	Refined White Earthenware	Undecorated	Indeterminate	Fragment	Indeterminate	5	1820+
373	620E 370N	Ceramic	Refined White Earthenware	Handpainted	Blue	Cup	Tableware	1	1820+
374	620E 370N	Ceramic	Refined Yellow	Glazed	Clear Glaze	Crock	Kitchenware	1	1830-1940

ORIGINAL 31 August 2020 Stage 3 Site-specific Assessment of the Loon 1 (Bdhd-23) Site within 206105 Highway 26, Part of Lot 19, Concession 6 (Geographic Township of St. Vincent, County of Grey), Municipality of Meaford, County of Grey (AMICK File #2020115/MHSTCI File #P058-1887-2020)

375	620E 370N	Glass	Earthenware Commercial	Cylindrical	Clear	Bottle Neck	Storage	1	1850+
376	620E 370N	Glass	Commercial	Cylindrical	Olive Green	Bottle	Liquor	1	1784+
377	620E 375N	Bone	Mammal	Indeterminate	Indeterminate	Indetermina te	Food	4	Indeterminate
378	620E 375N	Metal	Iron	Wire	Indeterminate	Nail	Architecture	1	1890+
379	620E 375N	Ceramic	Refined White Earthenware	Handpainted	Blue	Vase	Tableware	9	1820+
380	620E 375N	Ceramic	Refined White Earthenware	Undecorated	Indeterminate	Cup	Tableware	3	1820+
381	620E 375N	Glass	Commercial	Cylindrical	Brown	Bottle	Liquor	3	1900+
382	620E 375N	Glass	Commercial	Roller Milled	Clarified	Window	Architecture	3	1870+
383	620E 380N	Ceramic	Refined White Earthenware	Undecorated	Indeterminate	Bowl	Tableware	12	1820+
384	620E 380N	Ceramic	Porcelain	Glazed	Doll Head	Doll	Entertainment	1	1890+
385	620E 380N	Glass	Commercial	Roller Milled	Clarified	Window	Architecture	12	1870+
386	620E 380N	Glass	Commercial	Cylindrical	Olive Green	Bottle	Liquor	2	1784+
387	620E 380N	Metal	Iron	Wire	Indeterminate	Nail	Architecture	2	1890+
388	620E 385N	Ceramic	Refined White	Undecorated	Indeterminate	Pipe Stem	Tableware	10	1820+

ORIGINAL 31 August 2020 Stage 3 Site-specific Assessment of the Loon 1 (Bdhd-23) Site within 206105 Highway 26, Part of Lot 19, Concession 6 (Geographic Township of St. Vincent, County of Grey), Municipality of Meaford, County of Grey (AMICK File #2020115/MHSTCI File #P058-1887-2020)

389	620E 385N	Metal	Earthenware Iron	Wire	Indeterminate	Nail	Architecture	7	1890+
390	620E 385N	Glass	Commercial	Cylindrical	Green Tint	Bottle	Storage/Liquor	1	1850+
391	620E 385N	Glass	Commercial	Roller Milled	Clarified	Window	Architecture	10	1870+
392	620E 385N	Ceramic	Refined White Earthenware	Transferprint	Blue	Pipe Stem	Tableware	1	1820+
393	620E 390N	Bone	Mammal	Indeterminate	Indeterminate	Indetermina te	Food	6	Indeterminate
394	620E 390N	Ceramic	Refined White Earthenware	Undecorated	Indeterminate	Plate	Tableware	12	1820+
395	620E 390N	Ceramic	Refined White Earthenware	Transferprint	Brown Flowers	Bowl	Tableware	3	1820+
396	620E 390N	Ceramic	Refined White Earthenware	Transferprint	Blue	Plate	Tableware	3	1820+
397	620E 390N	Metal	Iron	Wire	Indeterminate	Nail	Architecture	10	1890+
398	620E 390N	Glass	Commercial	Roller Milled	Clarified	Window	Architecture	12	1870+
399	620E 390N	Ceramic	Coarse Red Earthenware	Glazed	Clear Glaze	Crock	Kitchenware	1	1840+
400	620E 390N	Metal	Iron	Cast	Indeterminate	Fragment	Indeterminate	4	Indeterminate
401	620E 395N	Bone	Mammal	Indeterminate	Indeterminate	Indetermina te	Food	1	Indeterminate
402	620E	Metal	Iron	Wire	Indeterminate	Nail	Architecture	2	1890+

ORIGINAL 31 August 2020 Stage 3 Site-specific Assessment of the Loon 1 (Bdhd-23) Site within 206105 Highway 26, Part of Lot 19, Concession 6 (Geographic Township of St. Vincent, County of Grey), Municipality of Meaford, County of Grey (AMICK File #2020115/MHSTCI File #P058-1887-2020)

403	395N 620E	Glass	Commercial	Roller Milled	Clarified	Window	Architecture	4	1870+
404	395N 620E	Glass	Commercial	Cylindrical	Clear	Bottle Neck	Storage	1	1850+
405	395N 620E	Ceramic	Refined White Earthenware	Undecorated	Indeterminate	Fragment	Indeterminate	8	1820+
406	395N 620E	Ceramic	Refined Yellow Earthenware	Glazed	Clear Glaze	Fragment	Kitchenware	2	1830-1940
407	400N 620E	Ceramic	Refined White Earthenware	Transferprint	Brown	Bowl	Tableware	2	1820+
408	400N 620E	Ceramic	Refined White Earthenware	Undecorated	Indeterminate	Fragment	Tableware	14	1820+
409	400N 620E	Bone	Mammal	Indeterminate	Indeterminate	Indetermina te	Food	1	Indeterminate
410	400N 620E	Glass	Commercial	Cylindrical	Clear	Bottle	Storage	1	Indeterminate
411	400N 620E	Glass	Commercial	Cylindrical	"Waterman's Ink Canada"	Inkwell	Writing	1	1899+
412	400N 620E	Glass	Commercial	Cylindrical	Neck and Mouth	Bottle	Storage	1	1850+
413	400N 620E	Metal	Iron	Wire	Indeterminate	Nail	Architecture	6	1890+
414	405N 620E	Ceramic	Refined White Earthenware	Undecorated	Indeterminate	Mug	Tableware	3	1820+
415	405N 620E	Metal	Iron	Wire	Indeterminate	Nail	Architecture	1	1890+

ORIGINAL 31 August 2020 Stage 3 Site-specific Assessment of the Loon 1 (Bdhd-23) Site within 206105 Highway 26, Part of Lot 19, Concession 6 (Geographic Township of St. Vincent, County of Grey), Municipality of Meaford, County of Grey (AMICK File #2020115/MHSTCI File #P058-1887-2020)

654	620E 410N	Ceramic	Refined White Earthenware	Undecorated	Indeterminate	Serving Bowl	Tableware	32	1820+
655	620E 410N	Ceramic	Refined Yellow Earthenware	Rockingham	Indeterminate	Pitcher	Tableware	8	1830+
656	620E 410N	Glass	Commercial	Cylindrical	Blue Tint	Insulator	Electrical	1	1850+
657	620E 410N	Glass	Commercial	Panel Bottle	Magenta	Bottle	Storage	4	1850+
658	620E 410N	Bone	Mammal	Indeterminate	Indeterminate	Indetermina te	Food	2	Indeterminate
416	620E 415N	Glass	Commercial	Cylindrical	Blue Tint	Fragment	Storage	3	Indeterminate
417	620E 420N	Ceramic	Porcelain	Glazed	Cream	Bath Tile	Architecture	1	1890+
418	622E 392N	Ceramic	Refined White Earthenware	Undecorated	Indeterminate	Mug	Tableware	4	1820+
419	622E 392N	Glass	Commercial	Cylindrical	Green	Bottle	Indeterminate	1	Indeterminate
420	623E 400N	Ceramic	Refined White Earthenware	Undecorated	Indeterminate	Plate	Tableware	5	1820+
421	623E 400N	Ceramic	Coarse Red Earthenware	Glazed	Clear Glaze	Fragment	Indeterminate	2	1840+
422	623E 400N	Glass	Commercial	Roller Milled	Clarified	Window	Architecture	2	1870+
423	623E 400N	Glass	Commercial	Panel Bottle	Clear	Bottle	Storage	2	1850+
424	623E 400N	Metal	Iron	Cast	Indeterminate	Bar	Mechanical	1	Indeterminate

ORIGINAL 31 August 2020 Stage 3 Site-specific Assessment of the Loon 1 (Bdhd-23) Site within 206105 Highway 26, Part of Lot 19, Concession 6 (Geographic Township of St. Vincent, County of Grey), Municipality of Meaford, County of Grey (AMICK File #2020115/MHSTCI File #P058-1887-2020)

425	623E 410N	Ceramic	Refined White Earthenware	Undecorated	Indeterminate	Mug	Tableware	7	1820+
426	625E 370N	Ceramic	Refined White Earthenware	Undecorated	Indeterminate	Mug	Tableware	2	1820+
427	625E 370N	Glass	Commercial	Cylindrical	Green	Bottle	Storage	1	Indeterminate
428	625E 370N	Glass	Commercial	Panel Bottle	Clear	Bottle	Storage/Medicine	2	1850+
429	625E 370N	Glass	Commercial	Threaded	Brown	Bottle	Storage	1	1850+
430	625E 375N	Ceramic	Refined White Earthenware	Undecorated	Indeterminate	Fragment	Indeterminate	16	1820+
431	625E 375N	Ceramic	Coarse Red Earthenware	Glazed	Clear Glaze	Fragment	Indeterminate	1	1840+
432	625E 375N	Glass	Commercial	Roller Milled	Clarified	Window	Architecture	4	1870+
433	625E 380N	Metal	Iron	Wire	Indeterminate	Nail	Architecture	15	1890+
434	625E 380N	Metal	Brass	Indeterminate	Square shaped	Fragment	Indeterminate	1	Indeterminate
435	625E 380N	Bone	Mammal	Indeterminate	Cross Hatched	Knife Handle	Tableware	1	Indeterminate
436	625E 380N	Glass	Commercial	Roller Milled	Clarified	Window	Architecture	6	1870+
437	625E 380N	Glass	Commercial	Cylindrical	Brown	Bottle	Storage	4	1900+
438	625E 380N	Glass	Commercial	Cylindrical	Blue Tint	Bottle	Storage	1	Indeterminate
439	625E	Ceramic	Refined	Undecorated	Indeterminate	Mug	Tableware	7	1820+

ORIGINAL 31 August 2020 Stage 3 Site-specific Assessment of the Loon 1 (Bdhd-23) Site within 206105 Highway 26, Part of Lot 19, Concession 6 (Geographic Township of St. Vincent, County of Grey), Municipality of Meaford, County of Grey (AMICK File #2020115/MHSTCI File #P058-1887-2020)

	380N		White Earthenware						
440	625E 380N	Ceramic	Refined White Earthenware	Spongeware	Blue	Cup	Tableware	1	1840-1900
441	625E 385N	Bone	Mammal	Indeterminate	Indeterminate	Indetermina te	Food	3	Indeterminate
442	625E 385N	Glass	Commercial	Cylindrical	Magenta	Bottle	Storage	3	1850+
443	625E 385N	Ceramic	Refined White Earthenware	Undecorated	Indeterminate	Plate	Tableware	12	1820+
444	625E 385N	Glass	Commercial	Cylindrical	Blue Tint	Bottle	Storage	4	1850+
445	625E 385N	Glass	Commercial	Cylindrical	Olive Green	Bottle	Liquor	3	1784+
446	625E 385N	Ceramic	Refined Yellow Earthenware	Glazed	Clear Glaze	Fragment	Kitchenware	3	1840+
447	625E 390N	Glass	Commercial	Cylindrical	Olive Green	Bottle	Liquor	1	1784+
448	625E 390N	Glass	Commercial	Cylindrical	Clear	Bottle	Storage	1	1850+
449	625E 390N	Glass	Commercial	Panel Bottle	Clear	Bottle	Storage	3	1850+
450	625E 390N	Ceramic	Refined White Earthenware	Transferprint	Blue	Plate	Tableware	3	1820+
451	625E 390N	Ceramic	Refined White Earthenware	Transferprint	Brown Steams	Cup	Tableware	1	1820+
452	625E	Ceramic	Refined	Undecorated	Indeterminate	Fragment	Indeterminate	5	1820+

ORIGINAL 31 August 2020 Stage 3 Site-specific Assessment of the Loon 1 (Bdhd-23) Site within 206105 Highway 26, Part of Lot 19, Concession 6 (Geographic Township of St. Vincent, County of Grey), Municipality of Meaford, County of Grey (AMICK File #2020115/MHSTCI File #P058-1887-2020)

	390N		White Earthenware						
453	625E 390N	Ceramic	Refined Yellow Earthenware	Glazed	Clear Glaze	Crock	Kitchenware	1	1840+
454	625E 395N	Ceramic	Refined White Earthenware	Undecorated	Indeterminate	Fragment	Tableware	8	1820+
455	625E 395N	Ceramic	Refined White Earthenware	Transferprint	Brown Flowers	Bowl	Tableware	1	1820+
456	625E 395N	Ceramic	Refined White Earthenware	Transferprint	Blue	Fragment	Tableware	1	1820+
457	625E 395N	Metal	Iron	Wire	Indeterminate	Nail	Architecture	3	1890+
458	625E 395N	Glass	Commercial	Roller Milled	Clarified	Window	Architecture	5	1870+
459	625E 400N	N/A	N/A	N/A	N/A	N/A	N/A	0	N/A
460	625E 405N	Ceramic	Refined White Earthenware	Undecorated	Indeterminate	Fragment	Indeterminate	1	1820+
461	625E 405N	Ceramic	Ironstone	Makers Mark	"J. Wedgewood"	Plate	Tableware	1	1840-1860
462	625E 405N	Ceramic	Coarse Red Earthenware	Unglazed	Indeterminate	Fragment	Indeterminate	1	1840+
463	625E 410N	N/A	N/A	N/A	N/A	N/A	N/A	0	N/A
464	625E 415N	Ceramic	Refined White Earthenware	Undecorated	Indeterminate	Mug	Tableware	2	1820+

ORIGINAL 31 August 2020 Stage 3 Site-specific Assessment of the Loon 1 (Bdhd-23) Site within 206105 Highway 26, Part of Lot 19, Concession 6 (Geographic Township of St. Vincent, County of Grey), Municipality of Meaford, County of Grey (AMICK File #2020115/MHSTCI File #P058-1887-2020)

465	625E 415N	Metal	Iron	Wire	Indeterminate	Nail	Architecture	1	1890+
466	630E 360N	Glass	Commercial	Roller Milled	Clarified	Window	Architecture	3	1870+
467	630E 360N	Ceramic	Refined White Earthenware	Undecorated	Indeterminate	Fragment	Indeterminate	1	1820+
468	630E 370N	Metal	Iron	Wire	Indeterminate	Nail	Architecture	4	1890+
469	630E 370N	Glass	Commercial	Roller Milled	Clarified	Window	Architecture	1	1870+
470	630E 370N	Ceramic	Refined White Earthenware	Undecorated	Indeterminate	Cup	Tableware	1	1820+
471	630E 370N	Ceramic	Coarse Red Earthenware	Glazed	Salt Glaze	Crock	Kitchenware	1	1840-1930
472	630E 370N	Glass	Commercial	Cylindrical	Green	Bottle	Indeterminate	1	Indeterminate
473	630E 375N	Ceramic	Refined White Earthenware	Undecorated	Indeterminate	Mug	Tableware	1	1820+
474	630E 375N	Ceramic	Refined White Earthenware	Handpainted	Blue	Fragment	Indeterminate	1	1820+
475	630E 375N	Metal	Iron	Cast	Strap	Fragment	Indeterminate	1	Indeterminate
476	630E 380N	Ceramic	Refined White Earthenware	Undecorated	Indeterminate	Mug	Tableware	4	1820+
477	630E 380N	Bone	Mammal	Indeterminate	Indeterminate	Indetermina te	Food	3	Indeterminate
478	630E	Glass	Commercial	Cylindrical	Clear	Bottle	Storage	8	1850+

ORIGINAL 31 August 2020 Stage 3 Site-specific Assessment of the Loon 1 (Bdhd-23) Site within 206105 Highway 26, Part of Lot 19, Concession 6 (Geographic Township of St. Vincent, County of Grey), Municipality of Meaford, County of Grey (AMICK File #2020115/MHSTCI File #P058-1887-2020)

479	380N 630E	Ceramic	White Ball Clay	Undecorated	Indeterminate	Pipe Stem	Smoking	1	1800+
480	385N 630E	Ceramic	Refined White Earthenware	Undecorated	Indeterminate	Mug	Tableware	13	1820+
481	385N 630E	Ceramic	Refined White Earthenware	Transferprint	Blue	Saucer	Tableware	2	1820+
482	385N 630E	Ceramic	Refined White Earthenware	Spongeware	Blue	Bowl	Tableware	2	1840-1900
483	385N 630E	Ceramic	Refined White Earthenware	Transferprint	Brown	Plate	Tableware	1	1820+
484	385N 630E	Ceramic	Refined White Earthenware	Handpainted	Blue	Fragment	Indeterminate	1	1820+
485	385N 630E	Glass	Commercial	Panel Bottle	Clear	Bottle	Storage/Medicine	1	1850+
486	385N 630E	Glass	Commercial	Roller Milled	Clarified	Window	Architecture	9	1870+
487	385N 630E	Glass	Commercial	Cylindrical	Green Tint	Bottle	Indeterminate	1	Indeterminate
488	385N 630E	Plastic	Baked	White	4-Hole	Button	Clothing	1	1900+
489	390N 630E	Ceramic	Refined White Earthenware	Undecorated	Indeterminate	Fragment	Indeterminate	13	1820+
490	390N 630E	Ceramic	Refined White Earthenware	Edgeware	Blue	Cup	Tableware	1	1820+

ORIGINAL 31 August 2020 Stage 3 Site-specific Assessment of the Loon 1 (Bdhd-23) Site within 206105 Highway 26, Part of Lot 19, Concession 6 (Geographic Township of St. Vincent, County of Grey), Municipality of Meaford, County of Grey (AMICK File #2020115/MHSTCI File #P058-1887-2020)

491	630E 390N	Ceramic	Coarse Red Earthenware	Unglazed	Indeterminate	Brick	Architecture	6	1784+
492	630E 390N	Glass	Commercial	Roller Milled	Clarified	Window	Architecture	6	1870+
493	630E 390N	Metal	Iron	Wire	Indeterminate	Nail	Architecture	2	1890+
494	630E 395N	Metal	Iron	Wire	Indeterminate	Nail	Architecture	2	1890+
495	630E 395N	Ceramic	Refined White Earthenware	Undecorated	Indeterminate	Fragment	Indeterminate	3	1820+
496	630E 395N	Ceramic	Refined White Earthenware	Handpainted	Blue Lines	Bowl	Tableware	2	1820+
497	630E 395N	Glass	Commercial	Roller Milled	Clarified	Window	Architecture	5	1870+
498	630E 400N	Metal	Iron	Wire	Indeterminate	Nail	Architecture	3	1890+
499	630E 400N	Glass	Commercial	Roller Milled	Clarified	Window	Architecture	2	1870+
500	630E 400N	Glass	Commercial	Cylindrical	Green	Bottle	Indeterminate	1	Indeterminate
501	630E 400N	Glass	Commercial	Two-Hole	Small	Button	Clothing	1	1900+
502	630E 410N	Glass	Commercial	Roller Milled	Clarified	Window	Architecture	1	1870+
503	630E 420N	Glass	Commercial	Threaded	Clear	Jar Lid	Storage	1	1850+
504	630E 420N	Glass	Commercial	Cylindrical	Green	Fragment	Indeterminate	1	Indeterminate
505	633E 382N	Ceramic	Porcelain	Undecorated	Indeterminate	Fragment	Tableware	1	1890+

ORIGINAL 31 August 2020 Stage 3 Site-specific Assessment of the Loon 1 (Bdhd-23) Site within 206105 Highway 26, Part of Lot 19, Concession 6 (Geographic Township of St. Vincent, County of Grey), Municipality of Meaford, County of Grey (AMICK File #2020115/MHSTCI File #P058-1887-2020)

506	633E 382N	Ceramic	Refined White Earthenware	Undecorated	Indeterminate	Fragment	Indeterminate	3	1820+
507	633E 382N	Ceramic	Refined White Earthenware	Spongeware	Blue	Plate	Tableware	3	1840-1900
508	633E 382N	Ceramic	Refined White Earthenware	Spongeware	Pink	Saucer	Tableware	1	1840-1900
509	633E 382N	Bone	Mammal	Indeterminate	Indeterminate	Indetermina te	Food	1	Indeterminate
510	633E 382N	Glass	Commercial	Cylindrical	Magenta	Fragment	Indeterminate	2	1870-1930
511	633E 382N	Glass	Commercial	Indeterminate	Clear	Fragment	Indeterminate	1	Indeterminate
512	633E 382N	Glass	Commercial	Cut	Diamond shapes	Chandalier Piece	Lighting	1	Indeterminate
513	633E 382N	Metal	Iron	Wire	Indeterminate	Nail	Architecture	1	1890+
514	633E 382N	Metal	Steel	Indeterminate	Indeterminate	Spoon	Tableware	1	1900+
515	635E 375N	Ceramic	Coarse Red Earthenware	Glazed	Clear Glaze	Fragment	Indeterminate	1	1840+
516	635E 375N	Ceramic	Refined White Earthenware	Undecorated	Indeterminate	Fragment	Tableware	7	1820+
517	635E 375N	Ceramic	Refined White Earthenware	Handpainted	Blue	Plate	Tableware	1	1820+
518	635E 375N	Ceramic	Refined White Earthenware	Transferprint	Blue	Plate	Tableware	1	1820+

ORIGINAL 31 August 2020 Stage 3 Site-specific Assessment of the Loon 1 (Bdhd-23) Site within 206105 Highway 26, Part of Lot 19, Concession 6 (Geographic Township of St. Vincent, County of Grey), Municipality of Meaford, County of Grey (AMICK File #2020115/MHSTCI File #P058-1887-2020)

519	635E 375N	Glass	Commercial	Cylindrical	Clear	Bottle Neck	Storage	1	1850+
520	635E 375N	Metal	Iron	Wire	Indeterminate	Nail	Architecture	2	1890+
521	635E 380N	Ceramic	Refined White Earthenware	Undecorated	Indeterminate	Mug	Tableware	2	1820+
522	635E 380N	Ceramic	Refined White Earthenware	Transferprint	Blue	Plate	Tableware	1	1820+
523	635E 380N	Ceramic	Refined Yellow Earthenware	Unglazed	Unglazed	Fragment	Indeterminate	1	1830-1940
524	635E 380N	Glass	Commercial	Threaded	Clear	Jar Lid	Storage	1	1850+
525	635E 380N	Glass	Commercial	Cylindrical	Olive Green	Bottle	Liquor	1	1784+
526	635E 385N	Ceramic	Refined White Earthenware	Undecorated	Indeterminate	Mug	Tableware	25	1820+
527	635E 385N	Ceramic	Refined White Earthenware	Transferprint	Blue	Plate	Tableware	2	1820+
528	635E 385N	Ceramic	Refined White Earthenware	Spongeware	Blue	Fragment	Indeterminate	1	1840-1900
529	635E 385N	Ceramic	Refined White Earthenware	Transferprint	Brown Flowers	Cup	Tableware	1	1820+
530	635E 385N	Ceramic	Refined White Earthenware	Handpainted	Green Line	Cup	Tableware	1	1820+

ORIGINAL 31 August 2020 Stage 3 Site-specific Assessment of the Loon 1 (Bdhd-23) Site within 206105 Highway 26, Part of Lot 19, Concession 6 (Geographic Township of St. Vincent, County of Grey), Municipality of Meaford, County of Grey (AMICK File #2020115/MHSTCI File #P058-1887-2020)

531	635E 385N	Bone	Mammal	Indeterminate	Indeterminate	Indetermina te	Food	4	Indeterminate
532	635E 385N	Glass	Commercial	Roller Milled	Clarified	Window	Architecture	4	1870+
533	635E 385N	Glass	Commercial	Cylindrical	Blue Tint	Bottle	Indeterminate	3	1920+
534	635E 385N	Glass	Commercial	Panel Bottle	Magenta	Bottle	Storage	2	1850+
535	635E 390N	Ceramic	Refined White Earthenware	Undecorated	Indeterminate	Fragment	Indeterminate	1	1820+
536	635E 390N	Glass	Commercial	Roller Milled	Clarified	Window	Architecture	2	1870+
537	635E 390N	Metal	Iron	Wire	Indeterminate	Nail	Architecture	2	1890+
538	635E 390N	Glass	Commercial	Cylindrical	Clear	Bottle Neck	Storage	1	1850+
539	635E 390N	Ceramic	Coarse Red Earthenware	Unglazed	Indeterminate	Fragment	Indeterminate	1	1850+
540	635E 395N	Ceramic	Refined White Earthenware	Undecorated	Indeterminate	Mug	Tableware	5	1820+
541	640E 380N	Metal	Iron	Wire	Indeterminate	Nail	Architecture	4	1890+
542	640E 380N	Ceramic	Refined White Earthenware	Undecorated	Indeterminate	Mug	Tableware	1	1820+
543	640E 380N	Glass	Commercial	Roller Milled	Clarified	Window	Architecture	1	1870+
544	640E 385N	Ceramic	Refined White Earthenware	Undecorated	Indeterminate	Cup	Tableware	4	1820+

ORIGINAL 31 August 2020 Stage 3 Site-specific Assessment of the Loon 1 (Bdhd-23) Site within 206105 Highway 26, Part of Lot 19, Concession 6 (Geographic Township of St. Vincent, County of Grey), Municipality of Meaford, County of Grey (AMICK File #2020115/MHSTCI File #P058-1887-2020)

545	640E 385N	Ceramic	Refined White Earthenware	Spongeware	Blue	Plate	Tableware	1	1840-1900
546	640E 385N	Glass	Commercial	Cylindrical	Brown	Bottle	Storage	1	1850+
547	640E 385N	Glass	Commercial	Cylindrical	Blue Tint	Bottle	Storage	1	1920+
548	640E 385N	Glass	Commercial	Cylindrical	Black	Fragment	Indeterminate	1	1784+
549	640E 390N	Ceramic	Refined White Earthenware	Undecorated	Indeterminate	Cup	Tableware	2	1820+
550	CSP 1	Ceramic	Refined White Earthenware	Undecorated	Clear Glazed	Fragment	Tableware	1	1830+
551	CSP 10	Metal	Iron	Tube	Indeterminate	Indetermina te	Indeterminate	1	1870+
552	CSP 11	Glass	Commercial	Cylindrical	Clear	Fragment	Storage	1	1870+
553	CSP 12	Glass	Commercial	Cylindrical	Clear	Fragment	Storage	1	1870+
554	CSP 13	Metal	Iron	Wire	Indeterminate	Barbed Wire	Architecture	1	1870+
555	CSP 14	Ceramic	Refined White Earthenware	Undecorated	Clear Glazed	Fragment	Tableware	1	1830+
556	CSP 15	Glass	Commercial	Roller Milled	Clear	Window	Architecture	1	1870+
557	CSP 16	Glass	Commercial	Roller Milled	Clear	Window	Architecture	1	1870+
558	CSP 17	Metal	Iron	Wire	Indeterminate	Nail	Architecture	1	1870+
559	CSP 18	Metal	Iron	Wire	Indeterminate	Nail	Architecture	3	1870+
560	CSP 19	Glass	Commercial	Roller Milled	Clear	Window	Architecture	2	1870+
561	CSP 2	Glass	Commercial	Cylindrical	Clear	Fragment	Storage	1	1870+
562	CSP 20	Glass	Commercial	Cylindrical	Clear	Fragment	Architecture	1	1870+

ORIGINAL 31 August 2020 Stage 3 Site-specific Assessment of the Loon 1 (Bdhd-23) Site within 206105 Highway 26, Part of Lot 19, Concession 6 (Geographic Township of St. Vincent, County of Grey), Municipality of Meaford, County of Grey (AMICK File #2020115/MHSTCI File #P058-1887-2020)

563	CSP 21	Glass	Commercial	Cylindrical	Green	Fragment	Storage	1	1870+
564	CSP 22	Glass	Commercial	Roller Milled	Clear	Window	Architecture	5	1870+
565	CSP 23	Glass	Commercial	Roller Milled	Clear	Window	Architecture	4	1870+
566	CSP 24	Glass	Commercial	Roller Milled	Clear	Window	Architecture	3	1870+
567	CSP 25	Metal	Iron	Wire	Indeterminate	Nail	Architecture	1	1870+
568	CSP 26	Metal	Iron	Indeterminate	Indeterminate	Indetermina te	Farm Implement	3	1950+
569	CSP 27	Glass	Commercial	Cylindrical	Clear	Fragment	Storage	2	1870+
570	CSP 28	Ceramic	Ironstone	Undecorated	Clear Glazed	Fragment	Tableware	1	1860+
571	CSP 29	Glass	Commercial	Cylindrical	Clear	Fragment	Storage	1	1870+
572	CSP 3	Metal	Iron	Wire	Indeterminate	Nail	Architecture	3	1870+
573	CSP 30	Glass	Commercial	Roller Milled	Clear	Window	Architecture	1	1870+
574	CSP 31	Glass	Commercial	Roller Milled	Clear	Window	Architecture	1	1870+
575	CSP 32	Ceramic	Coarse Red Earthenware	Unglazed	Unglazed	Flower Pot	Horticulture	1	1850+
576	CSP 33	Ceramic	Coarse Red Earthenware	Unglazed	Unglazed	Flower Pot	Horticulture	1	1850+
577	CSP 34	Glass	Commercial	Roller Milled	Clear	Window	Architecture	1	1870+
578	CSP 35	Ceramic	Ironstone	Undecorated	Clear Glazed	cup	Tableware	3	1860+
579	CSP 36	Ceramic	Refined White Earthenware	Undecorated	Clear Glazed	Cup Handle	Tableware	1	1830+
580	CSP 37	Glass	Commercial	Cylindrical	Clear	Fragment	Storage	1	1870+
581	CSP 38	Ceramic	Refined White Earthenware	Undecorated	Clear Glazed	Fragment	Tableware	1	1830+
582	CSP 39	Glass	Commercial	Cylindrical	Clear	Fragment	Storage	1	1870+
583	CSP 4	Bone	Mammal	Indeterminate	Indeterminate	Bone	Food	1	Indeterminate
584	CSP 40	Glass	Commercial	Cylindrical	Clarified	Bottle	Storage	1	1870+
585	CSP 41	Glass	Commercial	Cylindrical	Clear	Fragment	Storage	1	1870+

ORIGINAL 31 August 2020 Stage 3 Site-specific Assessment of the Loon 1 (Bdhd-23) Site within 206105 Highway 26, Part of Lot 19, Concession 6 (Geographic Township of St. Vincent, County of Grey), Municipality of Meaford, County of Grey (AMICK File #2020115/MHSTCI File #P058-1887-2020)

586	CSP 42	Glass	Commercial	Roller Milled	Clear	Window	Architecture	4	1870+
587	CSP 43	Glass	Commercial	Roller Milled	Clear	Window	Architecture	3	1870+
588	CSP 44	Ceramic	Ironstone	Undecorated	Clear Glazed	Fragment	Tableware	1	1860+
589	CSP 44	Glass	Commercial	Roller Milled	Clear	Window	Architecture	1	1870+
590	CSP 45	Glass	Commercial	Roller Milled	Clear	Window	Architecture	1	1870+
591	CSP 46	Glass	Commercial	Cylindrical	Clear	Fragment	Storage	2	1870+
592	CSP 47	Ceramic	Ironstone	Undecorated	Clear Glazed	Fragment	Tableware	1	1860+
593	CSP 48	Metal	Iron	Wire	Indeterminate	Nail	Architecture	1	1870+
594	CSP 49	Ceramic	Refined White Earthenware	Transferprint	Clear Glazed	Fragment	Tableware	1	1830+
595	CSP 49	Ceramic	Refined White Earthenware	Undecorated	Clear Glazed	Fragment	Tableware	1	1830+
596	CSP 5	Ceramic	Refined White Earthenware	Undecorated	Clear Glazed	Fragment	Tableware	1	1830+
597	CSP 50	Ceramic	Ironstone	Undecorated	Clear Glazed	Fragment	Tableware	1	1860+
598	CSP 51	Ceramic	Porcelain	Undecorated	Clear Glazed	Fragment	Tableware	1	1890+
599	CSP 52	Ceramic	Coarse Red Earthenware	Glazed	Clear Glazed	Fragment	Tableware	1	1850+
600	CSP 53	Ceramic	Refined White Earthenware	Transferprint	Brown	Fragment	Tableware	1	1830+
601	CSP 54	Glass	Commercial	Cylindrical	Clear	Fragment	Storage	2	1870+
602	CSP 55	Glass	Commercial	Cylindrical	Clear	Fragment	Storage	1	1870+
603	CSP 56	Glass	Commercial	Cylindrical	Clear	Fragment	Storage	1	1870+
604	CSP 57	Glass	Commercial	Cylindrical	Clear	Fragment	Storage	1	1870+
605	CSP 58	Ceramic	Refined White Earthenware	Undecorated	Clear Glazed	Fragment	Tableware	2	1830+

ORIGINAL 31 August 2020 Stage 3 Site-specific Assessment of the Loon 1 (Bdhd-23) Site within 206105 Highway 26, Part of Lot 19, Concession 6 (Geographic Township of St. Vincent, County of Grey), Municipality of Meaford, County of Grey (AMICK File #2020115/MHSTCI File #P058-1887-2020)

606	CSP 59	Ceramic	Porcelain	Undecorated	Clear Glazed	Fragment	Tableware	1	1890+
607	CSP 59	Ceramic	Refined White Earthenware	Undecorated	Clear Glazed	Fragment	Tableware	1	1830+
608	CSP 6	Ceramic	Refined White Earthenware	Undecorated	Clear Glazed	Fragment	Tableware	1	1830+
609	CSP 60	Ceramic	Refined White Earthenware	Undecorated	Clear	Fragment	Tableware	2	1830+
610	CSP 61	Ceramic	Refined White Earthenware	Slip Decorated	Blue	Fragment	Tableware	1	1830+
611	CSP 62	Glass	Commercial	Cylindrical	Clear	Fragment	Storage	1	1870+
612	CSP 63	Glass	Commercial	Cylindrical	Clear	Fragment	Storage	1	1870+
613	CSP 64	Glass	Commercial	Cylindrical	Clear	Fragment	Storage	1	1870+
614	CSP 65	Ceramic	Ironstone	Undecorated	Clear Glazed	Fragment	Tableware	1	1860+
615	CSP 66	Glass	Commercial	Roller Milled	Clear	Window	Architecture	4	1870+
616	CSP 67	Glass	Commercial	Cylindrical	Clear	Fragment	Storage	1	1870+
617	CSP 68	Ceramic	Refined White Earthenware	Undecorated	Clear Glazed	Fragment	Tableware	1	1830+
618	CSP 69	Ceramic	Refined White Earthenware	Undecorated	Clear Glazed	Fragment	Tableware	1	1830+
619	CSP 7	Glass	Commercial	Cylindrical	Amber	Fragment	Storage	1	1870+
620	CSP 70	Glass	Commercial	Cylindrical	Green	Bottle	Storage	1	1870+
621	CSP 71	Ceramic	Refined White Earthenware	Undecorated	Clear Glazed	Fragment	Tableware	1	1830+
622	CSP 72	Glass	Commercial	Cylindrical	Clear	Fragment	Storage	1	1870+

ORIGINAL 31 August 2020 Stage 3 Site-specific Assessment of the Loon 1 (Bdhd-23) Site within 206105 Highway 26, Part of Lot 19, Concession 6 (Geographic Township of St. Vincent, County of Grey), Municipality of Meaford, County of Grey (AMICK File #2020115/MHSTCI File #P058-1887-2020)

623	CSP 73	Glass	Commercial	Cylindrical	Clear	Fragment	Storage	1	1870+
624	CSP 74	Glass	Commercial	Roller Milled	Clear	Window	Architecture	1	1870+
625	CSP 75	Ceramic	Refined White Earthenware	Undecorated	Clear Glazed	Fragment	Tableware	1	1830+
626	CSP 76	Ceramic	Coarse Red Earthenware	Glazed	Clear Glazed	Fragment	Tableware	1	1850+
627	CSP 76	Glass	Commercial	Cylindrical	Clear	Fragment	Storage	3	1870+
628	CSP 77	Ceramic	Refined White Earthenware	Undecorated	Clear Glazed	Fragment	Tableware	3	1830+
629	CSP 78	Glass	Commercial	Cylindrical	Clear	Bottle	Storage	1	1870+
630	CSP 79	Glass	Commercial	Cylindrical	Clear	Fragment	Storage	2	1870+
631	CSP 8	Glass	Commercial	Cylindrical	Clear	Fragment	Storage	1	1870+
632	CSP 80	Ceramic	Ironstone	Undecorated	Clear Glazed	Fragment	Tableware	2	1860+
633	CSP 81	Glass	Commercial	Roller Milled	Clear	Window	Architecture	2	1870+
653	CSP 81	Ceramic	Refined White Earthenware	Undecorated	Clear Glazed	Fragment	Tableware	2	1830+
634	CSP 82	Glass	Commercial	Cylindrical	Clear	Fragment	Storage	1	1870+
635	CSP 83	Ceramic	Ironstone	Undecorated	Clear Glazed	Fragment	Tableware	1	1860+
636	CSP 84	Ceramic	Refined White Earthenware	Undecorated	Clear Glazed	Fragment	Tableware	1	1830+
637	CSP 84	Glass	Commercial	Cylindrical	Clear	Fragment	Storage	3	1870+
638	CSP 84	Glass	Commercial	Roller Milled	Clear	Window	Architecture	1	1870+
639	CSP 85	Ceramic	Ironstone	Undecorated	Clear Glazed	Fragment	Tableware	1	1860+
640	CSP 85	Ceramic	Refined White Earthenware	Undecorated	Clear Glazed	Fragment	Tableware	1	1830+
641	CSP 86	Glass	Commercial	Cylindrical	Clear	Fragment	Storage	1	1870+

ORIGINAL 31 August 2020 Stage 3 Site-specific Assessment of the Loon 1 (Bdhd-23) Site within 206105 Highway 26, Part of Lot 19, Concession 6 (Geographic Township of St. Vincent, County of Grey), Municipality of Meaford, County of Grey (AMICK File #2020115/MHSTCI File #P058-1887-2020)

642	CSP 87	Glass	Commercial	Cylindrical	Clear	Fragment	Storage	2	1870+
643	CSP 87	Ceramic	Refined White Earthenware	Slip Decorated	Blue	Fragment	Tableware	1	1820+
644	CSP 88	Ceramic	Refined White Earthenware	Undecorated	Clear Glazed	Fragment	Tableware	2	1830+
645	CSP 88	Glass	Commercial	Roller Milled	Clear	Fragment	Architecture	1	1870+
646	CSP 89	Ceramic	Coarse Red Earthenware	Glazed	Clear Glazed	Fragment	Tableware	1	1850+
647	CSP 89	Ceramic	Refined White Earthenware	Transferprint	Black	Fragment	Tableware	1	1820+
648	CSP 89	Ceramic	Ironstone	Undecorated	Clear Glazed	Fragment	Tableware	1	1860+
649	CSP 9	Glass	Commercial	Roller Milled	Clear	Window	Architecture	1	1870+
650	CSP 90	Glass	Commercial	Cylindrical	Clear	Fragment	Storage	1	1870+
651	CSP 90	Glass	Commercial	Cylindrical	Clear	Fragment	Storage	1	1870+
652	CSP 90	Glass	Commercial	Roller Milled	Clear	Window	Architecture	2	1870+