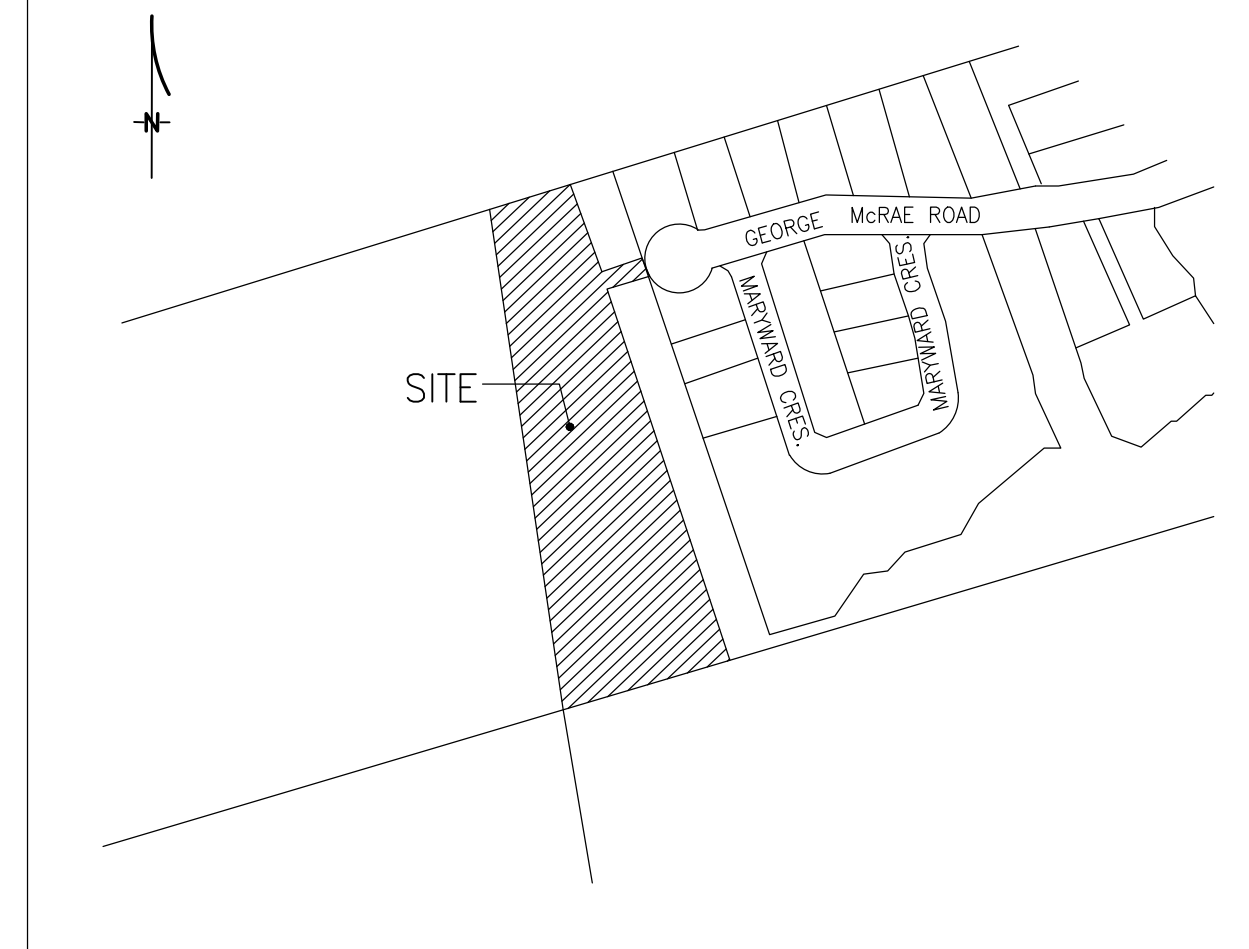
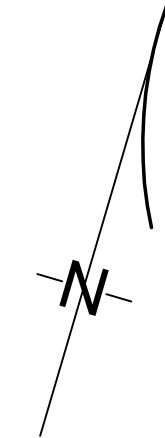


GOLF COURSE
BLOCK 1
REGISTERED PLAN 1157



KEY PLAN (NOT TO SCALE)

**DRAFT PLAN OF
COMMON ELEMENTS CONDOMINIUM OF
BLOCKS 32 AND 33
PLAN 16M-XXX
TOWN OF THE BLUE MOUNTAINS
COUNTY OF GREY**

SCALE 1:500
R-PE SURVEYING LTD., O.L.S.
DISTANCES AND COORDINATES SHOWN ON THIS PLAN ARE IN METRES AND CAN BE CONVERTED TO FEET BY DIVIDING BY 0.3048.

SURVEYOR'S CERTIFICATE

I CERTIFY THAT THE BOUNDARIES OF THE LANDS TO BE SUBDIVIDED AND THEIR RELATIONSHIP TO THE ADJOINING LANDS ARE ACCURATELY AND CORRECTLY SHOWN.

DATE _____, 2022

A. U. KUMARANAYAKE
ONTARIO LAND SURVEYOR

OWNER'S CERTIFICATE

I AUTHORIZE R-PE SURVEYING LTD., O.L.S. TO PREPARE AND SUBMIT THIS DRAFT PLAN OF COMMON ELEMENTS CONDOMINIUM TO THE COUNTY OF GREY FOR APPROVAL.

PRIMONT (PEAK MEADOWS) INC

DATE _____, 2022

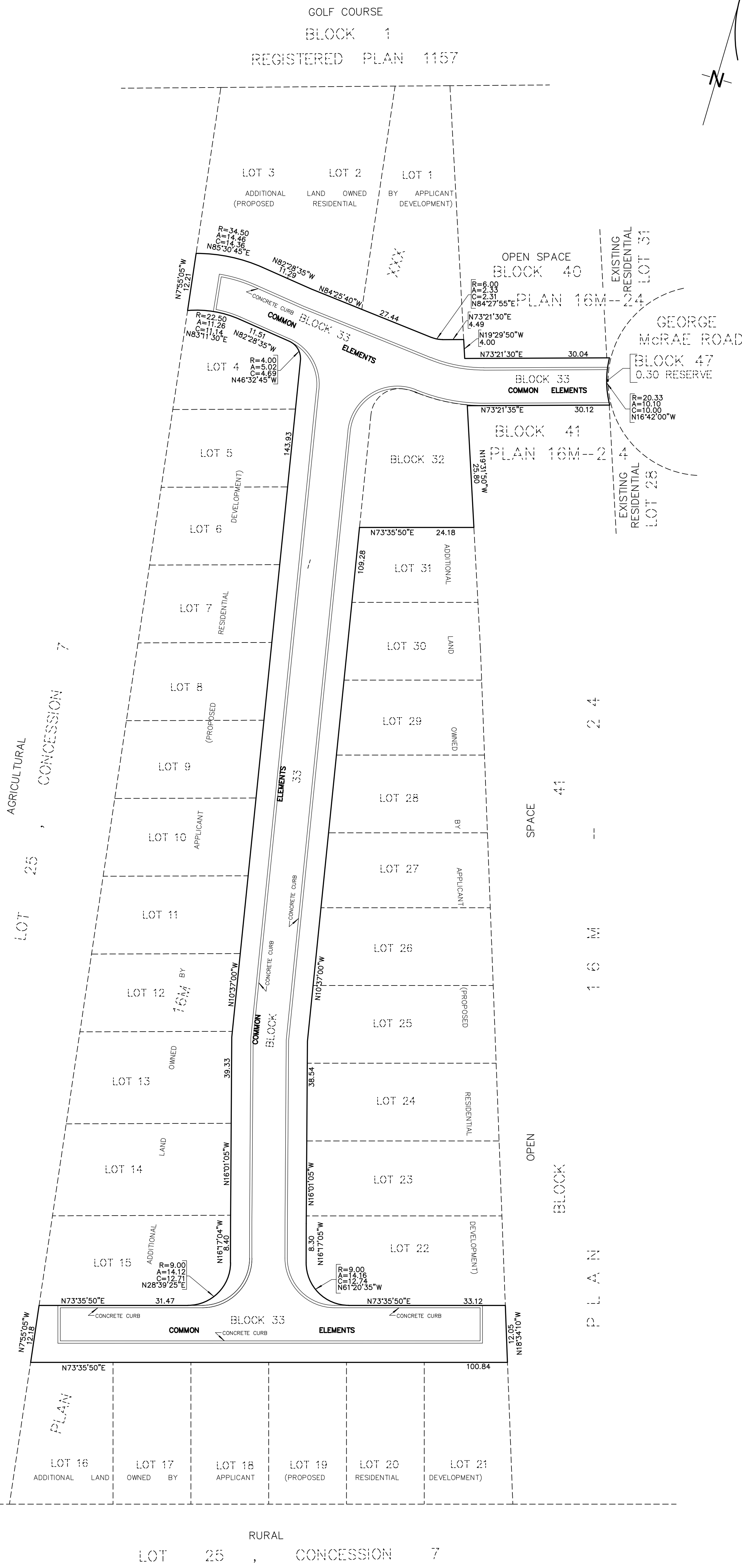
JOE MONTESANO
AUTHORIZED SIGNING OFFICER
I HAVE THE AUTHORITY TO BIND THE CORPORATION

ADDITIONAL INFORMATION AS REQUIRED BY SECTION 51(17) OF THE PLANNING ACT

- (a) SEE PLAN
- (b) SEE PLAN
- (c) SEE PLAN AND KEY PLAN
- (d) THE LAND IS TO BE USED ACCORDING TO THE SCHEDULE OF LAND USE
- (e) SEE PLAN
- (f) SEE PLAN
- (g) SEE PLAN AND KEY PLAN
- (h) MUNICIPAL WATER SUPPLY
- (i) CLAY
- (j) SEE PREVIOUS APPROVED DRAFT PLAN
- (k) MUNICIPAL SANITARY SEWER
- (l) NO RESTRICTIVE COVENANTS OR EASEMENTS

LAND USE

PROPOSED SITE AREA (COMMON ELEMENTS AREA) = 6115.91 m².
PARCELS OF TIED LAND (POTL): 31 LOTS
LAND USE INFORMATION OBTAINED FROM SITE PLAN BY RN DESIGN DATED NOVEMBER 29, 2021



rpe R-PE SURVEYING LTD.
ONTARIO LAND SURVEYORS
643 Christie Road, Suite 7
Woodbridge, Ontario L4L 8A3
Tel.(416)635-5000 Fax (416)635-5001
Tel.(905)264-0881 Fax (905)264-2099
Website: www.r-pe.ca
DRAWN: A.Q. / A.K.
JOB No. 21-431 CAD FILE No.21431-DP-1a