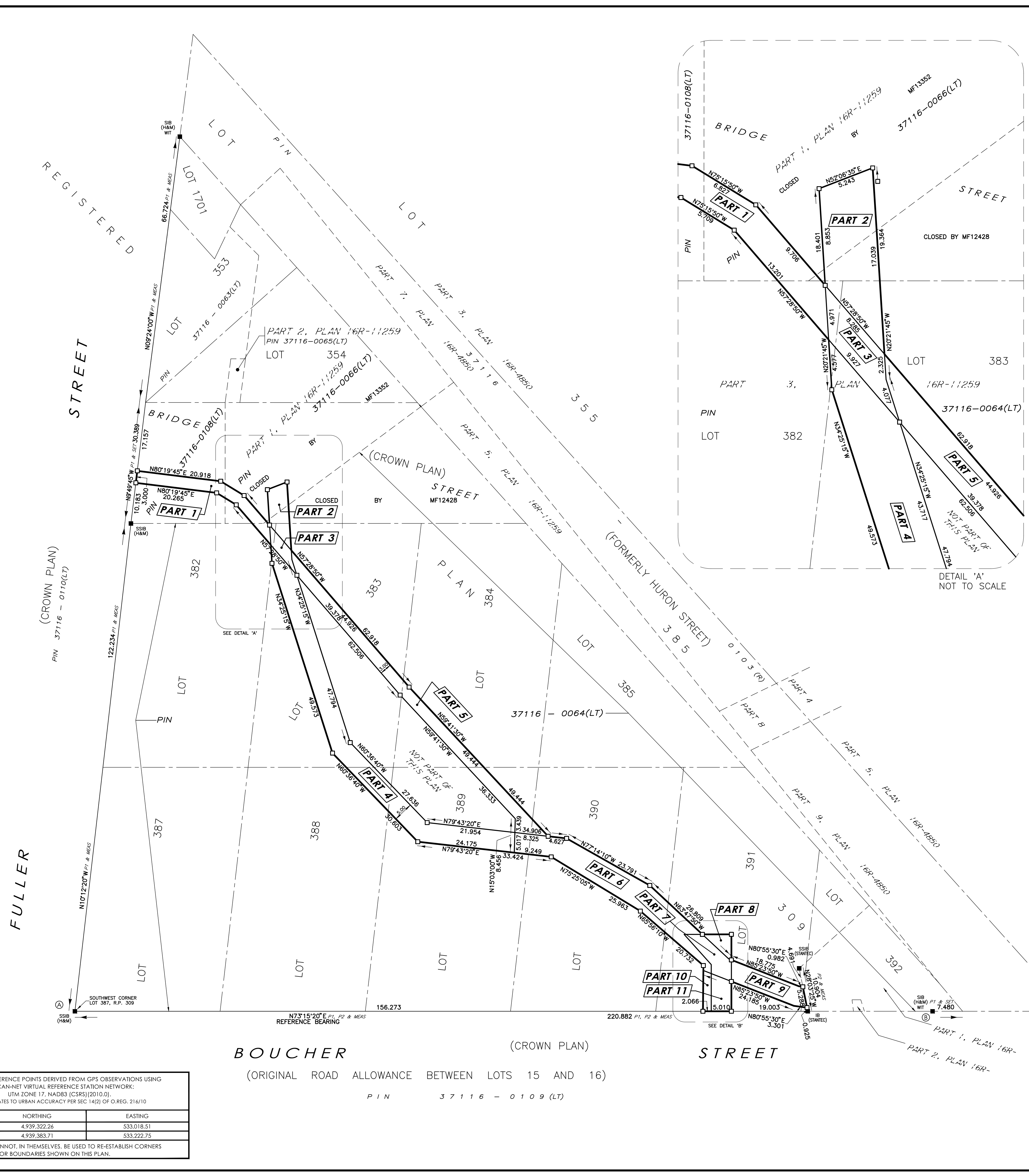


18 October 2021 10:48 AM



SCHEDULE			
PART	LOT	PLAN	PIN
1	PART OF BRIDGE STREET AND PART OF LOT 382	REGISTERED PLAN 309	PIN 37116-0108(LT), PIN 37116-0066(LT) AND PIN 37116-0064(LT)
2	PART OF BRIDGE STREET AND PART OF LOTS 382 AND 383	REGISTERED PLAN 309	PIN 37116-0066(LT) AND PIN 37116-0064(LT)
3	PART OF LOTS 382 AND 383	REGISTERED PLAN 309	PIN 37116-0064(LT)
4	PART OF LOTS 382, 383, 388 AND 389	REGISTERED PLAN 309	PIN 37116-0064(LT)
5	PART OF LOTS 383, 384, 389 AND 390	REGISTERED PLAN 309	PIN 37116-0064(LT)
6	PART OF LOTS 389, 390 AND 391	REGISTERED PLAN 309	PIN 37116-0064(LT)
7	PART OF LOT 391	REGISTERED PLAN 309	PIN 37116-0064(LT)
8	PART OF LOT 391	REGISTERED PLAN 309	PIN 37116-0064(LT)
9	PART OF LOT 391	REGISTERED PLAN 309	PIN 37116-0064(LT)
10	PART OF LOT 391	REGISTERED PLAN 309	PIN 37116-0064(LT)
11	PART OF LOT 391	REGISTERED PLAN 309	PIN 37116-0064(LT)

PART 1 COMPRISES PART OF PIN 37116-0108(LT)
 PARTS 1 & 2 COMPRISE PART OF PIN 37116-0066(LT)
 PARTS 1 TO 11 COMPRISE PART OF PIN 37116-0064(LT)

1. REQUIRE THIS PLAN TO BE DEPOSITED UNDER THE LAND TITLES ACT.

PLAN 16R-
 RECEIVED AND DEPOSITED

DATE: _____

JEREMY MATTHEWS

REPRESENTATIVE FOR THE LAND REGISTRAR FOR THE LAND TITLES DIVISION OF GREY (16).

PLAN OF SURVEY OF
PART OF LOTS 382, 383, 384, 388, 389, 390 AND 391 AND PART OF BRIDGE STREET SOUTHWEST OF HURON STREET NORTH OF LOTS 383 & 384
 (CLOSED BY MF12428 & MF13352)
REGISTERED PLAN 309
 (GEOGRAPHIC TOWNSHIP OF MEAFORD)
 MUNICIPALITY OF MEADORD
 COUNTY OF GREY
 Scale 1:500
 Stantec Geomatics Ltd.

METRIC CONVERSION
 DISTANCES AND COORDINATES SHOWN ON THIS PLAN ARE IN METRES AND CAN BE CONVERTED TO FEET BY DIVIDING BY 0.3048

LEGEND

■	DENOTES	FOUND MONUMENTS
□	DENOTES	SET MONUMENTS
IB		IRON BAR
IBW		ROUND IRON BAR
SIB		STANDARD IRON BAR
SSIB		SHORT STANDARD IRON BAR
CC		CUT CROSS
CP		CONCRETE PIN
WIT		WITNESS
PIN		PROPERTY IDENTIFICATION NUMBER
M/MEAS		MEASURED
PROP		PROPORTIONED
H&M		HEWITT AND MILNE LTD., O.L.S.
STANTEC		STANTEC GEOMATICS LTD.
P1		PLAN 16R-11259
P2		PLAN 16R-XXXXX

GRID SCALE CONVERSION
 DISTANCES ARE GROUND AND CAN BE CONVERTED TO GRID BY MULTIPLYING BY THE COMBINED SCALE FACTOR OF 0.99956.

BEARING NOTE
 BEARINGS ARE GRID AND ARE REFERRED TO THE SOUTHERLY LIMIT OF PART 3, AS SHOWN ON PLAN 16R-11259, HAVING A BEARING OF N73°15'20"E.

SURVEYOR'S CERTIFICATE
 I CERTIFY THAT:
 1. THIS SURVEY AND PLAN ARE CORRECT AND IN ACCORDANCE WITH THE SURVEYS ACT, THE SURVEYORS ACT AND THE LAND TITLES ACT AND THE REGULATIONS MADE UNDER THEM.
 2. THE SURVEY WAS COMPLETED ON THE DAY OF . 2021.

OBSERVED REFERENCE POINTS DERIVED FROM GPS OBSERVATIONS USING THE CAN-NET VIRTUAL REFERENCE STATION NETWORK:
 UTM ZONE 17, NAD83 (CSRS) (2010.0)
 COORDINATES TO URBAN ACCURACY PER SEC 14(2) OF O. REG. 216/10

POINT ID	NORTHING	EASTING
Ⓐ	4,939,322.26	533,018.51
Ⓑ	4,939,383.71	533,222.75

COORDINATES CANNOT, IN THEMSELVES, BE USED TO RE-ESTABLISH CORNERS OR BOUNDARIES SHOWN ON THIS PLAN.

DATE: _____

JEREMY C.E. MATTHEWS
 ONTARIO LAND SURVEYOR

Stantec Geomatics Ltd.
 CANADA LANDS SURVEYORS
 ONTARIO LAND SURVEYORS
 300 HAGEY BOULEVARD, SUITE 100
 WATERLOO, ONTARIO, N2L 0A4
 TEL. 519.579.4410
 stantec.com

DRAWN: BDC CHECKED: * DATE: OCTOBER 18, 2021 PROJECT NO.: 161660672