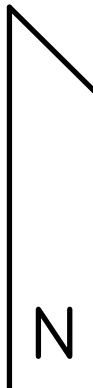


GOLF COURSE  
BLOCK 1  
REGISTERED PLAN 1157

RESIDENTIAL 51



### DRAFT PLAN OF SUBDIVISION

**BLOCK 38  
REGISTERED PLAN 16M-24**

**TOWN OF THE BLUE MOUNTAINS  
(Formerly Township of Collingwood)  
COUNTY OF GREY**

**SURVEYOR'S CERTIFICATE**  
I HEREBY CERTIFY THAT THE BOUNDARIES OF THE LANDS TO BE SUBDIVIDED ON THIS PLAN AND THEIR RELATIONSHIP TO THE ADJACENT LANDS ARE ACCURATELY AND CORRECTLY SHOWN.

SEPT 27, 2018  
PAUL R. THOMSEN O.L.S.  
ZEBEK, IMO, PATTEN & THOMSEN LTD

**OWNER'S CERTIFICATE**  
SOLICORP DEVELOPMENTS PEAKS RIDGE INC. AUTHORIZED PASCUZZO PLANNING INC. TO SUBMIT THE PROPOSED PLAN OF SUBDIVISION TO THE COUNTY OF GREY FOR APPROVAL.

SEPT 27, 2018  
ANDREW PASCUZZO MCP RPP  
PASCUZZO PLANNING INC.

**ADDITIONAL INFORMATION REQUIRED UNDER  
SECTION 51 (17) OF THE PLANNING ACT**

- (a) AS SHOWN ON DRAFT PLAN.
- (b) AS SHOWN ON DRAFT PLAN.
- (c) AS SHOWN ON DRAFT AND KEY PLAN.
- (d) THE LAND IS TO BE USED ACCORDING TO THE SCHEDULE OF LAND USE.
- (e) AS SHOWN ON DRAFT PLAN.
- (f) AS SHOWN ON DRAFT PLAN.
- (g) AS SHOWN ON DRAFT PLAN.
- (h) AS SHOWN ON DRAFT PLAN.
- (i) AS SHOWN ON DRAFT PLAN.
- (j) AS SHOWN ON DRAFT PLAN.
- (k) AS SHOWN ON DRAFT PLAN.
- (l) AS SHOWN ON DRAFT PLAN.
- (m) AS SHOWN ON DRAFT PLAN.
- (n) AS SHOWN ON DRAFT PLAN.
- (o) AS SHOWN ON DRAFT PLAN.
- (p) AS SHOWN ON DRAFT PLAN.
- (q) AS SHOWN ON DRAFT PLAN.
- (r) AS SHOWN ON DRAFT PLAN.
- (s) AS SHOWN ON DRAFT PLAN.
- (t) AS SHOWN ON DRAFT PLAN.
- (u) AS SHOWN ON DRAFT PLAN.
- (v) AS SHOWN ON DRAFT PLAN.
- (w) AS SHOWN ON DRAFT PLAN.
- (x) AS SHOWN ON DRAFT PLAN.
- (y) AS SHOWN ON DRAFT PLAN.
- (z) AS SHOWN ON DRAFT PLAN.

**SCHEDULE OF LAND USE**

	UNITS	AREA
<b>SINGLE-FAMILY RESIDENTIAL (LOTS 1-31)</b>	31	1.76 ha.
<b>COMMON ELEMENT CONDOMINIUM (PRIVATE ROAD AND AMENITY AREA - BLOCK 32)</b>		0.61 ha.
<b>TOTAL</b>	<b>31</b>	<b>2.37 ha.</b>

NOTE:

METRIC  
DISTANCES SHOWN ON THIS PLAN ARE IN METRES AND CAN BE CONVERTED TO FEET BY DIVIDING BY 0.3048  
PROJECT: 944-18  
DRAWN: AP  
DATE: JULY 2019

**DWG: 944-18-DP5**

**PASCUZZO PLANNING INC.**

