

DRAFT PLAN OF COMMON ELEMENT CONDOMINIUM

BLOCKS 67, 72, 73 and PART OF BLOCKS 75 & 76 and PART OF ALTA ROAD REGISTERED PLAN 1127 TOWN OF THE BLUE MOUNTAINS (FORMER TOWNSHIP OF COLLINGWOOD) COUNTY OF GREY

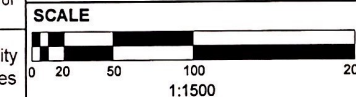
ADDITIONAL INFORMATION REQUIRED UNDER SECTION 51 (17) OF THE PLANNING ACT

- (a) AS SHOWN ON DRAFT PLAN,
- (b) AS SHOWN ON KEY PLAN,
- (c) AS SHOWN ON DRAFT AND KEY PLANS,
- (d) THE LAND IS TO BE USED ACCORDING TO THE SCHEDULE OF LAND USE,
- (e) AS SHOWN ON DRAFT PLAN,
- (f) AS SHOWN ON DRAFT PLAN,
- (g) AS SHOWN ON DRAFT AND KEY PLANS,
- (h) PIPED WATER TO BE MADE AVAILABLE
- (i) SOIL IS SILTY CLAY,
- (j) AS SHOWN ON DRAFT PLAN,
- (k) PIPED WATER AND SANITARY SEWERS TO BE MADE AVAILABLE
- (l) NONE

SCHEDULE OF LAND USE

COMMON ELEMENT CONDOMINIUM	LOTS/BLOCKS	AREA (ha.)
BLOCK 72	1.1	1.1

- LOTS 48 - 55 TIED TO COMMON ELEMENT CONDOMINIUM ON BLOCK 72 (POTLS).



METRIC
DISTANCES SHOWN ON THIS PLAN ARE IN METRES AND CAN BE CONVERTED TO FEET BY DIVIDING BY 0.3048

SURVEYOR'S CERTIFICATE
I HEREBY CERTIFY THAT THE BOUNDARIES OF THE LANDS TO BE SUBDIVIDED ON THIS PLAN AND THEIR RELATIONSHIP TO THE ADJACENT LANDS ARE ACCURATELY AND CORRECTLY SHOWN.
AUGUST 25, 2005 *[Signature]* O.L.S.
PAUL K. THOMSON O.L.S.
ZUBER, ENO, PATTEN & THOMSON LTD.
ONTARIO LAND SURVEYOR
TOWN OF COLLINGWOOD

OWNER'S CERTIFICATE
TABERA LIMITED HAS AUTHORIZED D.C. SLADE CONSULTANTS INC. TO PREPARE AND SUBMIT THIS DRAFT PLAN OF SUBDIVISION TO THE COUNTY OF GREY FOR APPROVAL.
AUGUST 25, 2005 *[Signature]*
DAVID SLADE
D.C. SLADE CONSULTANTS INC.

DCS D.C. Slade Consultants INC.
Planning & Development
243 HURONTARIO STREET, COLLINGWOOD, ON
705.444.1830

